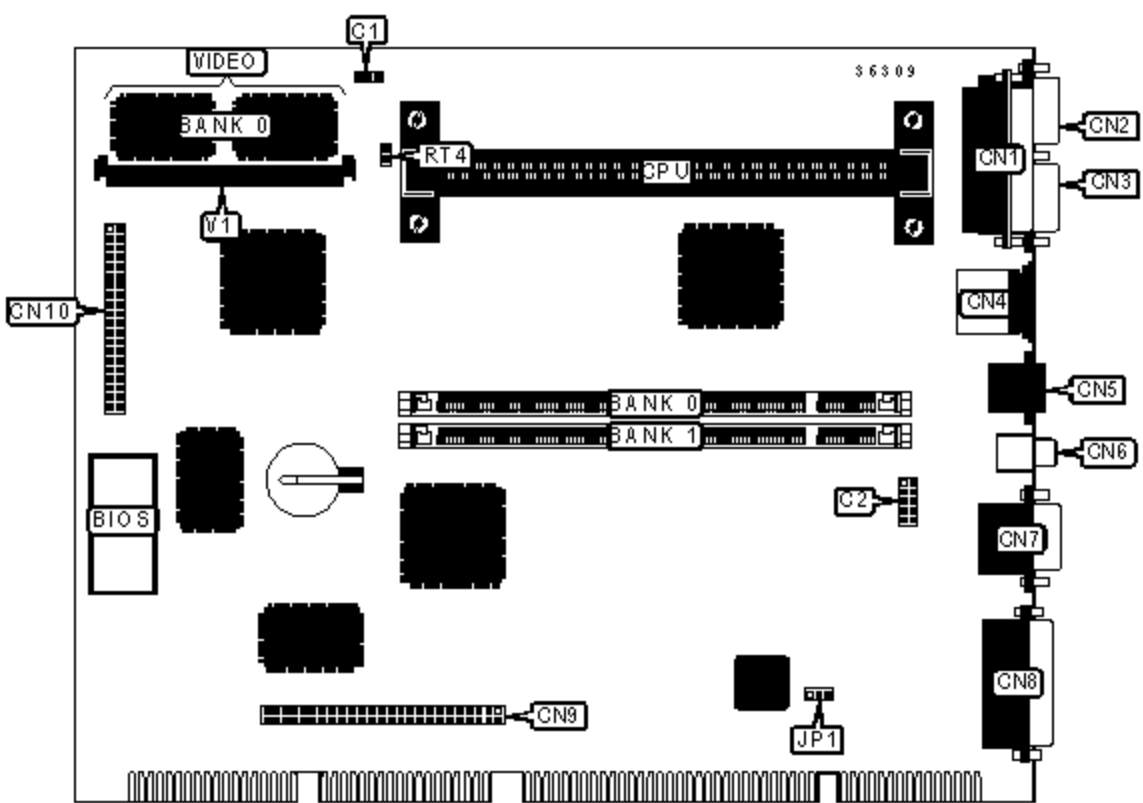


ASUS COMPUTER INTERNATIONAL

P2L-N, P2E-N (REV. 1.02)

Device Type	Mainboard
Processor	Pentium II/Celeron
Processor Speed	233/266/300/333/366MHz
Chip Set	Intel 440LX/EX
Video Chip Set	ATI
Maximum Onboard Memory	256MB (EDO & SDRAM supported)
Maximum Video Memory	8MB
Audio Chip Set	ESS
Cache	0/128/256/512KB (located on the CPU)
BIOS	Unidentified
Dimensions	305mm x 244mm
I/O Options (backplane)	CD-ROM interface, Ethernet 10BaseT connector, game/MIDI port, PS/2 mouse port, parallel port, serial ports (2), VGA port, riser slot
I/O Options (riser card)	32-bit PCI slots (2), USB connectors (2), ATX power connector, microphone in, IR connector, wake on LAN connector



CONNECTIONS

Purpose	Location	Purpose	Location
CPU fan power	C1	RCA jack	CN6
Jack connector	C2	VGA port	CN7
Parallel port	CN1	Game/MIDI port	CN8
Serial port 1	CN2	CD-ROM connector	CN9
Serial port 2	CN3	AMC connector	CN10

Serial port 2	CN3	AMC connector	CN10
PS/2 mouse port	CN4	CPU thermal sensor	RT4
Ethernet 10BaseT connector	CN5	Video upgrade module	V1

USER CONFIGURABLE SETTINGS

Function		Label	Position
»	On board audio enabled	JP1	Pins 1 & 2 closed
	On board audio disabled	JP1	Pins 2 & 3 closed

DIMM CONFIGURATION

Size	Bank 0	Bank 1
8MB	(1) 1M x 64	None
16MB	(1) 2M x 64	None
16MB	(1) 1M x 64	(1) 1M x 64
24MB	(1) 2M x 64	(1) 1M x 64
32MB	(1) 4M x 64	None
32MB	(1) 2M x 64	(1) 2M x 64
40MB	(1) 4M x 64	(1) 1M x 64
48MB	(1) 4M x 64	(1) 2M x 64
64MB	(1) 8M x 64	None
64MB	(1) 4M x 64	(1) 4M x 64
72MB	(1) 8M x 64	(1) 1M x 64
80MB	(1) 8M x 64	(1) 2M x 64
96MB	(1) 8M x 64	(1) 4M x 64
128MB	(1) 16M x 64	None
128MB	(1) 8M x 64	(1) 8M x 64
136MB	(1) 16M x 64	(1) 1M x 64
144MB	(1) 16M x 64	(1) 2M x 64

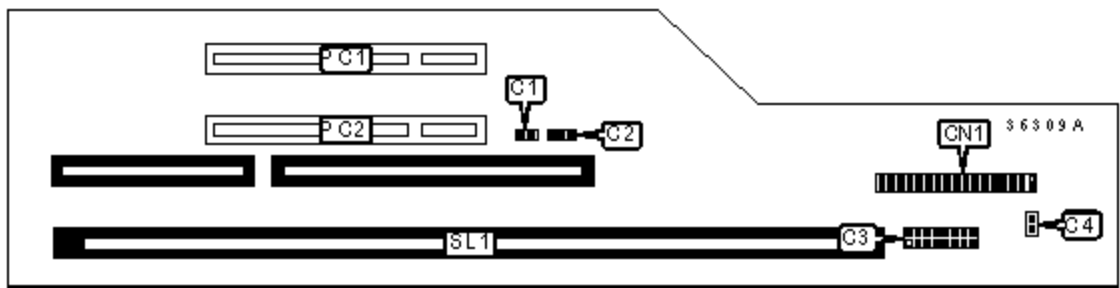
160MB	(1) 16M x 64	(1) 4M x 64
192MB	(1) 16M x 64	(1) 8M x 64
256MB	(1) 16M x 64	(1) 16M x 64
Note: Board accepts EDO & SDRAM memory.		

CACHE CONFIGURATION

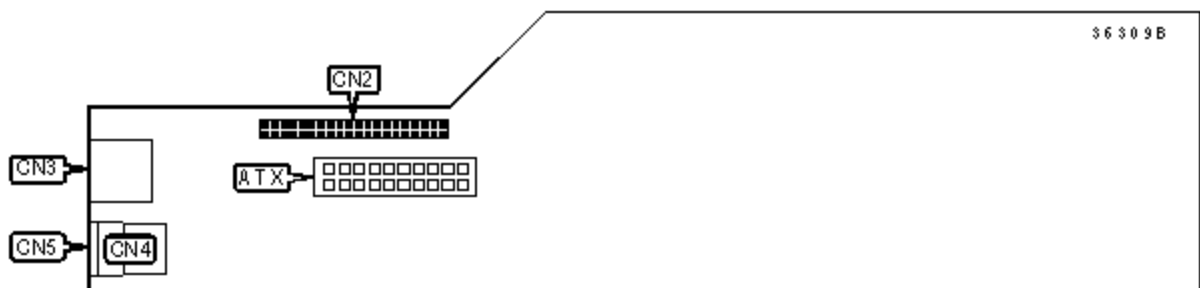
Note: 256KB/512KB cache is located on the Pentium II CPU. 128KB cache is located on the Celeron 300A & 333 CPU.

VIDEO MEMORY CONFIGURATION

Note: Board is factory installed with 0/2/4MB of video memory. To increase the memory, install upgrade module at V1.



RISER CARD-FRONT VIEW



RISER CARD-BACK VIEW

CONNECTIONS			
Purpose	Location	Purpose	Location
ATX power connector	ATX	IDE interface	CN2
LAN LED	C1	IR connector	CN3
Wake on LAN connector	C2	USB connector 1	CN4
Front panel connector	C3	USB connector 2	CN5

Microphone in	C4	Riser slot	SL1
Floppy drive interface	CN1	32-bit PCI slots	PC1 - PC2