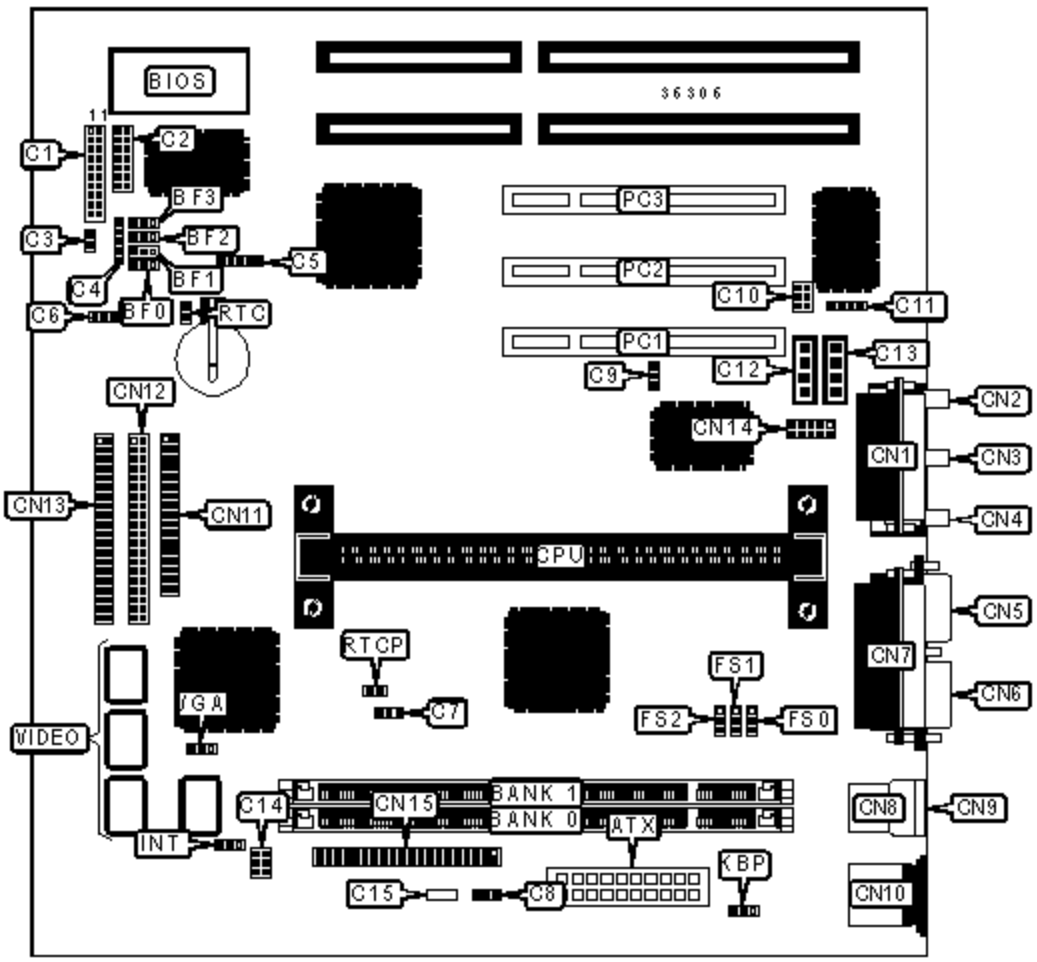


# ASUS COMPUTER INTERNATIONAL

## P2E-VM (REV. 1.02)

<b>Device Type</b>	Mainboard
<b>Processor</b>	Pentium II/Celeron
<b>Processor Speed</b>	233/266/300/333MHz
<b>Chip Set</b>	Intel 440LX
<b>Video Chip Set</b>	ATI
<b>Maximum Onboard Memory</b>	256MB (SDRAM supported)
<b>Maximum Video Memory</b>	8MB
<b>Audio Chip Set</b>	Unidentified
<b>Cache</b>	0/128/512KB (located on the CPU)
<b>BIOS</b>	Unidentified
<b>Dimensions</b>	305mm x 244mm
<b>I/O Options</b>	32-bit PCI slots (3), floppy drive interface, game/MIDI port, green PC connector, IDE interfaces (2), parallel port, PS/2 mouse port, serial ports (2), VGA port, IR connector, USB connectors (2), ATX power connector, line in, line out, microphone in, audio in - CD-ROMs (2), wake on LAN connector



### CONNECTIONS

Purpose	Location	Purpose	Location
ATX power connector	ATX	TV out connector	C14
Turbo LED	C1/pins 2 & 3	ATX fan power	C15
Green PC connector	C1/pins 4 & 5	Game/MIDI port	CN1

Soft off power supply	C1/pins 6 & 7	Microphone in	CN2
Reset switch	C1/pins 9 & 10	Line in	CN3
Power LED & keylock	C1/pins 11 - 15	Line out	CN4
Speaker	C1/pins 17 - 20	VGA port	CN5
V panel connector	C2	Serial port 1	CN6
IDE interface LED	C3	Parallel port	CN7
IR connector	C4	USB connector 1	CN8
SMB connector	C5	USB connector 2	CN9
Chassis fan power	C6	PS/2 mouse port	CN10
CPU fan power	C7	Floppy drive interface	CN11
Power fan power	C8	IDE interface 2	CN12
Wake on LAN connector	C9	IDE interface 1	CN13
Digital audio interface	C10	Serial port 2	CN14
Auxiliary in	C11	AMC connector	CN15
Audio in - CD-ROM	C12	32-bit PCI slots	PC1 - PC3
Audio in - CD-ROM	C13		

### USER CONFIGURABLE SETTINGS

USER CONFIGURABLE SETTINGS			
Function		Label	Position
»	VGA IRQ disabled	INT	Pins 1 & 2 closed
	VGA IRQ enabled	INT	Pins 2 & 3 closed
»	Keyboard power up disabled	KBP	Pins 1 & 2 closed
	Keyboard power up enabled	KBP	Pins 2 & 3 closed
»	CMOS memory normal operation	RTC	Open
	CMOS memory clear	RTC	Closed
»	Factory configured - do not alter	RTCP	Unidentified

»	On board video enabled	VGA	Pins 1 & 2 closed
	On board video disabled	VGA	Pins 2 & 3 closed

<b>DIMM CONFIGURATION</b>		
<b>Size</b>	<b>Bank 0</b>	<b>Bank 1</b>
8MB	(1) 1M x 64	None
16MB	(1) 2M x 64	None
16MB	(1) 1M x 64	(1) 1M x 64
24MB	(1) 2M x 64	(1) 1M x 64
32MB	(1) 4M x 64	None
32MB	(1) 2M x 64	(1) 2M x 64
40MB	(1) 4M x 64	(1) 1M x 64
48MB	(1) 4M x 64	(1) 2M x 64

<b>DIMM CONFIGURATION (CON'T)</b>		
<b>Size</b>	<b>Bank 0</b>	<b>Bank 1</b>
64MB	(1) 8M x 64	None
64MB	(1) 4M x 64	(1) 4M x 64
72MB	(1) 8M x 64	(1) 1M x 64
80MB	(1) 8M x 64	(1) 2M x 64
96MB	(1) 8M x 64	(1) 4M x 64
128MB	(1) 16M x 64	None
128MB	(1) 8M x 64	(1) 8M x 64
136MB	(1) 16M x 64	(1) 1M x 64
144MB	(1) 16M x 64	(1) 2M x 64
160MB	(1) 16M x 64	(1) 4M x 64
192MB	(1) 16M x 64	(1) 8M x 64
256MB	(1) 16M x 64	(1) 16M x 64

256MB

(1) 16M x 64

(1) 16M x 64

Note: Board accepts SDRAM memory.

### CACHE CONFIGURATION

Note: 512KB cache is located on the Pentium II CPU. 128KB cache is located on the Celeron 300A & 333 CPU.

### VIDEO MEMORY CONFIGURATION

Note: Video memory is factory installed and is not configurable.

### CPU SPEED SELECTION

CPU speed	Clock speed	Multiplier	FS0	FS1	FS2
233MHz	66MHz	3.5x	1 & 2	1 & 2	1 & 2
266MHz	66MHz	4x	1 & 2	1 & 2	1 & 2
300MHz	66MHz	4.5x	1 & 2	1 & 2	1 & 2
333MHz	66MHz	5x	1 & 2	1 & 2	1 & 2

Note: Pins designated should be in the closed position.

### CPU SPEED SELECTION (CON'T)

CPU speed	Clock speed	Multiplier	BF0	BF1	BF2	BF3
233MHz	66MHz	3.5x	1 & 2	1 & 2	2 & 3	2 & 3
266MHz	66MHz	4x	2 & 3	2 & 3	1 & 2	2 & 3
300MHz	66MHz	4.5x	1 & 2	2 & 3	1 & 2	2 & 3
333MHz	66MHz	5x	2 & 3	1 & 2	1 & 2	2 & 3

Note: Pins designated should be in the closed position.