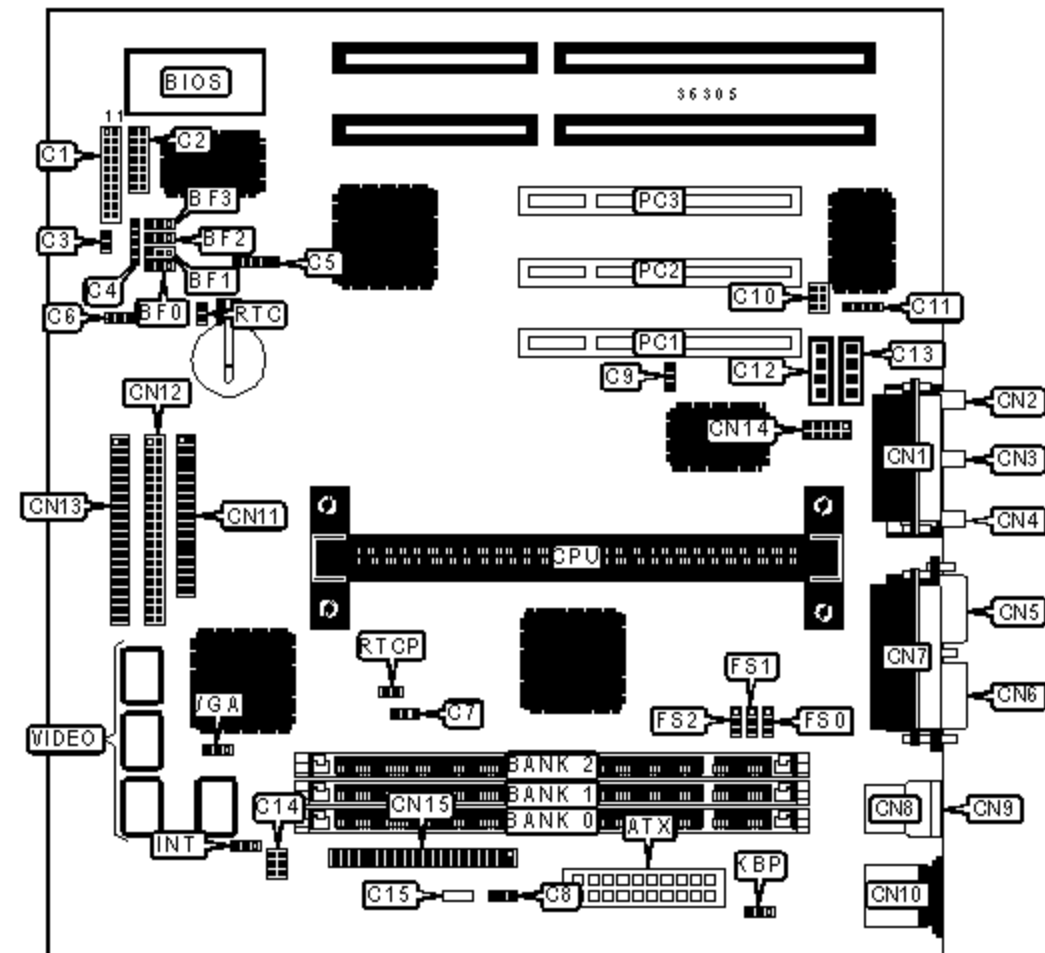


ASUS COMPUTER INTERNATIONAL

P2L-VM (REV. 1.02)

Device Type	Mainboard
Processor	Pentium II/Celeron
Processor Speed	233/266/300/333MHz
Chip Set	Intel 440LX
Video Chip Set	ATI
Maximum Onboard Memory	384MB (SDRAM supported)
Maximum Video Memory	8MB
Audio Chip Set	Unidentified
Cache	0/128/512KB (located on the CPU)
BIOS	Unidentified
Dimensions	305mm x 244mm
I/O Options	32-bit PCI slots (3), floppy drive interface, game/MIDI port, green PC connector, IDE interfaces (2), parallel port, PS/2 mouse port, serial ports (2), VGA port, IR connector, USB connectors (2), ATX power connector, AGP slot, line in, line out, microphone in, audio in - CD-ROMs (2), wake on LAN connector



CONNECTIONS

Purpose	Location	Purpose	Location
AGP slot	AGP	Audio in - CD-ROM	C13
ATX power connector	ATX	TV out connector	C14
Turbo LED	C1/pins 2 & 3	ATX fan power	C15

Green PC connector	C1/pins 4 & 5	Game/MIDI port	CN1
Soft off power supply	C1/pins 6 & 7	Microphone in	CN2
Reset switch	C1/pins 9 & 10	Line in	CN3
Power LED & keylock	C1/pins 11 - 15	Line out	CN4
Speaker	C1/pins 17 - 20	VGA port	CN5
V panel connector	C2	Serial port 1	CN6
IDE interface LED	C3	Parallel port	CN7
IR connector	C4	USB connector 1	CN8
SMB connector	C5	USB connector 2	CN9
Chassis fan power	C6	PS/2 mouse port	CN10
CPU fan power	C7	Floppy drive interface	CN11
Power fan power	C8	IDE interface 2	CN12
Wake on LAN connector	C9	IDE interface 1	CN13
Digital audio interface	C10	Serial port 2	CN14
Auxiliary in	C11	AMC connector	CN15
Audio in - CD-ROM	C12	32-bit PCI slots	PC1 - PC3

USER CONFIGURABLE SETTINGS

Function		Label	Position
»	VGA IRQ disabled	INT	Pins 1 & 2 closed
	VGA IRQ enabled	INT	Pins 2 & 3 closed
»	Keyboard power up disabled	KBP	Pins 1 & 2 closed
	Keyboard power up enabled	KBP	Pins 2 & 3 closed
»	CMOS memory normal operation	RTC	Open
	CMOS memory clear	RTC	Closed
»	Factory configured - do not alter	RTCP	Unidentified
»	On board video enabled	VGA	Pins 1 & 2 closed
	On board video disabled	VGA	Pins 2 & 3 closed

DIMM CONFIGURATION

Size	Bank 0	Bank 1	Bank 2
8MB	(1) 1M x 64	None	None
16MB	(1) 2M x 64	None	None
16MB	(1) 1M x 64	(1) 1M x 64	None
24MB	(1) 2M x 64	(1) 1M x 64	None
24MB	(1) 1M x 64	(1) 1M x 64	(1) 1M x 64
32MB	(1) 4M x 64	None	None
32MB	(1) 2M x 64	(1) 1M x 64	(1) 1M x 64
32MB	(1) 2M x 64	(1) 2M x 64	None

DIMM CONFIGURATION (CON'T)

Size	Bank 0	Bank 1	Bank 2
40MB	(1) 4M x 64	(1) 1M x 64	None
40MB	(1) 2M x 64	(1) 2M x 64	(1) 1M x 64
48MB	(1) 4M x 64	(1) 1M x 64	(1) 1M x 64
48MB	(1) 4M x 64	(1) 2M x 64	None
48MB	(1) 2M x 64	(1) 2M x 64	(1) 2M x 64
56MB	(1) 4M x 64	(1) 2M x 64	(1) 1M x 64
64MB	(1) 8M x 64	None	None
64MB	(1) 4M x 64	(1) 2M x 64	(1) 2M x 64
64MB	(1) 4M x 64	(1) 4M x 64	None
72MB	(1) 8M x 64	(1) 1M x 64	None
72MB	(1) 4M x 64	(1) 4M x 64	(1) 1M x 64
80MB	(1) 8M x 64	(1) 1M x 64	(1) 1M x 64
80MB	(1) 8M x 64	(1) 2M x 64	None

80MB	(1) 4M x 64	(1) 4M x 64	(1) 2M x 64
88MB	(1) 8M x 64	(1) 2M x 64	(1) 1M x 64
96MB	(1) 8M x 64	(1) 2M x 64	(1) 2M x 64
96MB	(1) 8M x 64	(1) 4M x 64	None
96MB	(1) 4M x 64	(1) 4M x 64	(1) 4M x 64
128MB	(1) 16M x 64	None	None
128MB	(1) 8M x 64	(1) 4M x 64	(1) 4M x 64
128MB	(1) 8M x 64	(1) 8M x 64	None
136MB	(1) 16M x 64	(1) 1M x 64	None
136MB	(1) 8M x 64	(1) 8M x 64	(1) 1M x 64
144MB	(1) 16M x 64	(1) 1M x 64	(1) 1M x 64
144MB	(1) 16M x 64	(1) 2M x 64	None
144MB	(1) 8M x 64	(1) 8M x 64	(1) 2M x 64
152MB	(1) 16M x 64	(1) 2M x 64	(1) 1M x 64
160MB	(1) 16M x 64	(1) 2M x 64	(1) 2M x 64
160MB	(1) 16M x 64	(1) 4M x 64	None
160MB	(1) 8M x 64	(1) 8M x 64	(1) 4M x 64
168MB	(1) 16M x 64	(1) 4M x 64	(1) 1M x 64
176MB	(1) 16M x 64	(1) 4M x 64	(1) 2M x 64
192MB	(1) 16M x 64	(1) 4M x 64	(1) 4M x 64
192MB	(1) 16M x 64	(1) 8M x 64	None
192MB	(1) 8M x 64	(1) 8M x 64	(1) 8M x 64
200MB	(1) 16M x 64	(1) 8M x 64	(1) 1M x 64
208MB	(1) 16M x 64	(1) 8M x 64	(1) 2M x 64
224MB	(1) 16M x 64	(1) 8M x 64	(1) 4M x 64
256MB	(1) 16M x 64	(1) 8M x 64	(1) 8M x 64
384MB	(1) 16M x 64	(1) 16M x 64	(1) 16M x 64

Note: Board accepts SDRAM memory.

CACHE CONFIGURATION

Note: 512KB cache is located on the Pentium II CPU. 128KB cache is located on the Celeron 300A & 333 CPU.

VIDEO MEMORY CONFIGURATION

Note: Video memory is factory installed and is not configurable.

CPU SPEED SELECTION

CPU speed	Clock speed	Multiplier	FS0	FS1	FS2
233MHz	66MHz	3.5x	1 & 2	1 & 2	1 & 2
266MHz	66MHz	4x	1 & 2	1 & 2	1 & 2
300MHz	66MHz	4.5x	1 & 2	1 & 2	1 & 2
333MHz	66MHz	5x	1 & 2	1 & 2	1 & 2

Note: Pins designated should be in the closed position.

CPU SPEED SELECTION (CON'T)

CPU speed	Clock speed	Multiplier	BF0	BF1	BF2	BF3
233MHz	66MHz	3.5x	1 & 2	1 & 2	2 & 3	2 & 3
266MHz	66MHz	4x	2 & 3	2 & 3	1 & 2	2 & 3
300MHz	66MHz	4.5x	1 & 2	2 & 3	1 & 2	2 & 3
333MHz	66MHz	5x	2 & 3	1 & 2	1 & 2	2 & 3

Note: Pins designated should be in the closed position.