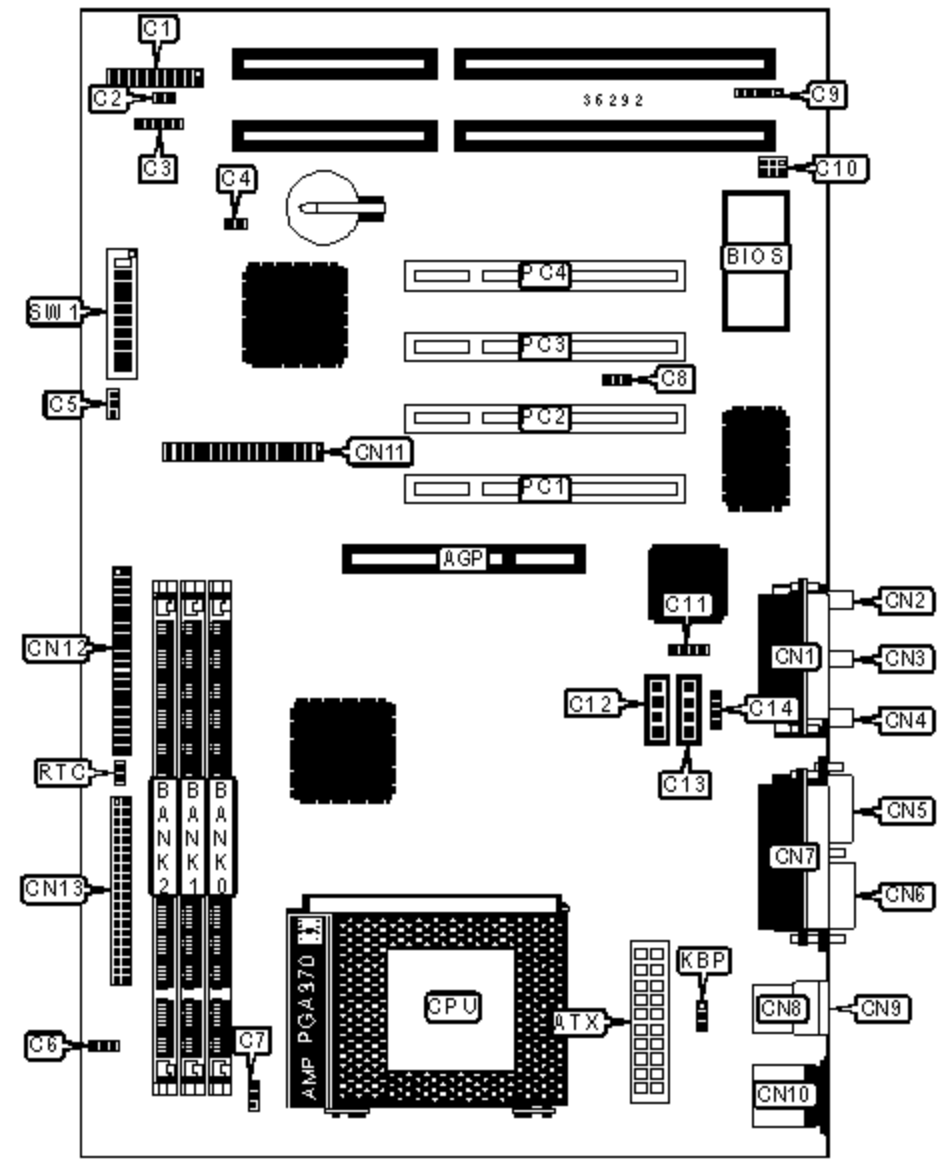


ASUS COMPUTER INTERNATIONAL

MEL-C (REV. 1.02)

Device Type	Mainboard
Processor	Celeron
Processor Speed	300/333/366/400/433/466MHz
Chip Set	Intel 440LX
Maximum Onboard Memory	256MB (SDRAM supported)
Audio Chip Set	ESS
Cache	128KB (located on the Celeron CPU)
BIOS	Unidentified
Dimensions	305mm x 244mm
I/O Options	32-bit PCI slots (4), floppy drive interface, game/MIDI port, green PC connector, IDE interfaces (2), parallel port, PS/2 mouse port, serial ports (2), IR connector, USB connectors (2), ATX power connector, AGP slot, line in, line out, microphone in, audio in - CD-ROMs (2), SB-link connector, wake on LAN connector, wake on modem connector



CONNECTIONS

Purpose	Location	Purpose	Location
AGP slot	AGP	Audio in - CD-ROM	C12
ATX power connector	ATX	Audio in - CD-ROM	C13

AIX power connector	AIX	Audio in - CD-ROM	C13
Turbo LED	C1/pins 2 & 3	Auxiliary in	C14
Green PC connector	C1/pins 4 & 5	Game/MIDI port	CN1
Soft off power supply	C1/pins 6 & 7	Microphone in	CN2
Reset switch	C1/pins 9 & 10	Line in	CN3
Power LED & keylock	C1/pins 11 - 15	Line out	CN4
Speaker	C1/pins 17 - 20	Serial port 2	CN5
IDE interface LED	C2	Serial port 1	CN6
IR connector	C3	Parallel port	CN7
Wake on modem connector	C4	USB connector 1	CN8
Chassis fan power	C5	USB connector 2	CN9
Power fan power	C6	PS/2 mouse port	CN10
CPU fan power	C7	Floppy drive interface	CN11
Wake on LAN connector	C8	IDE interface 2	CN12
SMB connector	C9	IDE interface 1	CN13
SB-link connector	C10	32-bit PCI slots	PC1 - PC4
Modem connector	C11		

USER CONFIGURABLE SETTINGS

Function		Label	Position
»	Keyboard power up disabled	KBP	Pins 1 & 2 closed
	Keyboard power up enabled	KBP	Pins 2 & 3 closed
»	CMOS memory normal operation	RTC	Open
	CMOS memory clear	RTC	Closed
»	Factory configured - do not alter	SW1/4	Unidentified
	Voltage select normal	SW1/5	Off
	Voltage select high	SW1/5	On
	On board audio disabled	SW1/6	Off

	On board audio enabled	SW1/6	On

DIMM CONFIGURATION

Size	Bank 0	Bank 1	Bank 2
8MB	(1) 1M x 64	None	None
16MB	(1) 2M x 64	None	None
16MB	(1) 1M x 64	(1) 1M x 64	None
24MB	(1) 2M x 64	(1) 1M x 64	None
24MB	(1) 1M x 64	(1) 1M x 64	(1) 1M x 64
32MB	(1) 4M x 64	None	None
32MB	(1) 2M x 64	(1) 1M x 64	(1) 1M x 64
32MB	(1) 2M x 64	(1) 2M x 64	None
40MB	(1) 4M x 64	(1) 1M x 64	None

DIMM CONFIGURATION (CON'T)

Size	Bank 0	Bank 1	Bank 2
40MB	(1) 2M x 64	(1) 2M x 64	(1) 1M x 64
48MB	(1) 4M x 64	(1) 1M x 64	(1) 1M x 64
48MB	(1) 4M x 64	(1) 2M x 64	None
48MB	(1) 2M x 64	(1) 2M x 64	(1) 2M x 64
56MB	(1) 4M x 64	(1) 2M x 64	(1) 1M x 64
64MB	(1) 8M x 64	None	None
64MB	(1) 4M x 64	(1) 2M x 64	(1) 2M x 64
64MB	(1) 4M x 64	(1) 4M x 64	None
72MB	(1) 4M x 64	(1) 4M x 64	(1) 1M x 64
80MB	(1) 8M x 64	(1) 1M x 64	(1) 1M x 64
80MB	(1) 8M x 64	(1) 2M x 64	None

80MB	(1) 4M x 64	(1) 4M x 64	(1) 2M x 64
88MB	(1) 8M x 64	(1) 2M x 64	(1) 1M x 64
96MB	(1) 8M x 64	(1) 2M x 64	(1) 2M x 64
128MB	(1) 8M x 64	(1) 4M x 64	(1) 4M x 64
128MB	(1) 8M x 64	(1) 8M x 64	None
144MB	(1) 8M x 64	(1) 8M x 64	(1) 2M x 64
152MB	(1) 16M x 64	(1) 2M x 64	(1) 1M x 64
160MB	(1) 16M x 64	(1) 2M x 64	(1) 2M x 64
160MB	(1) 16M x 64	(1) 4M x 64	None
160MB	(1) 8M x 64	(1) 8M x 64	(1) 4M x 64
168MB	(1) 16M x 64	(1) 4M x 64	(1) 1M x 64
176MB	(1) 16M x 64	(1) 4M x 64	(1) 2M x 64
192MB	(1) 16M x 64	(1) 4M x 64	(1) 4M x 64
192MB	(1) 16M x 64	(1) 8M x 64	None
192MB	(1) 8M x 64	(1) 8M x 64	(1) 8M x 64
256MB	(1) 32M x 64	None	None
256MB	(1) 16M x 64	(1) 8M x 64	(1) 8M x 64
288MB	(1) 32M x 64	(1) 2M x 64	(1) 2M x 64
288MB	(1) 32M x 64	(1) 4M x 64	None
320MB	(1) 32M x 64	(1) 4M x 64	(1) 4M x 64
320MB	(1) 32M x 64	(1) 8M x 64	None
384MB	(1) 32M x 64	(1) 8M x 64	(1) 8M x 64
384MB	(1) 32M x 64	(1) 16M x 64	None
384MB	(1) 16M x 64	(1) 16M x 64	(1) 16M x 64
512MB	(1) 32M x 64	(1) 16M x 64	(1) 16M x 64
512MB	(1) 32M x 64	(1) 32M x 64	None
768MB	(1) 32M x 64	(1) 32M x 64	(1) 32M x 64

Note: Board accepts SDRAM memory.

CACHE CONFIGURATION

Note: 128KB cache is located on the Celeron 300A & 333 CPU.

CPU SPEED SELECTION

CPU speed	Clock speed	Multiplier	SW1/1	SW1/2	SW1/3
300MHz	66MHz	4.5x	Off	Off	Off
333MHz	66MHz	5x	Off	Off	Off
366MHz	66MHz	5.5x	Off	Off	Off
400MHz	66MHz	6x	Off	Off	Off
433MHz	66MHz	6.5x	Off	Off	Off
466MHz	66MHz	7x	Off	Off	Off

CPU SPEED SELECTION (CON'T)

CPU speed	Clock speed	Multiplier	SW1/7	SW1/8	SW1/9	SW1/10
300MHz	66MHz	4.5x	On	On	On	Off
333MHz	66MHz	5x	Off	Off	Off	On
366MHz	66MHz	5.5x	On	Off	Off	On
400MHz	66MHz	6x	Off	On	Off	On
433MHz	66MHz	6.5x	Off	On	On	Off
466MHz	66MHz	7x	On	Off	On	Off