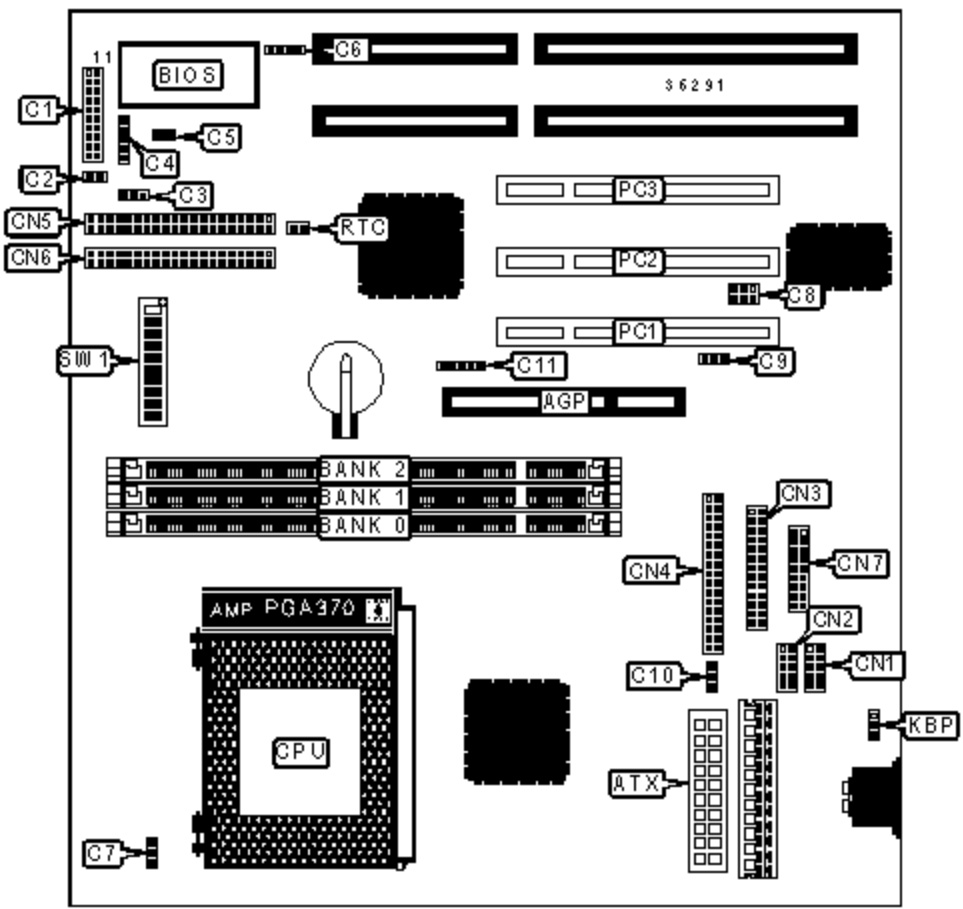


ASUS COMPUTER INTERNATIONAL

MEL-B (REV. 1.02)

Device Type	Mainboard
Processor	Celeron
Processor Speed	300/333/366/400MHz
Chip Set	Intel 440BX
Maximum Onboard Memory	768MB (SDRAM supported)
Audio Chip Set	ESS
Cache	128KB (located on the Celeron CPU)
BIOS	Unidentified
Dimensions	305mm x 244mm
I/O Options	32-bit PCI slots (3), floppy drive interface, green PC connector, IDE interfaces (2), parallel port, PS/2 mouse port, serial ports (2), IR connector, USB connectors (2), ATX power connector, AGP slot, SB-link connector, wake on LAN connector, wake on modem connector



CONNECTIONS			
Purpose	Location	Purpose	Location
AGP slot	AGP	CPU fan power	C7
ATX power connector	ATX	SB-link connector	C8
Turbo LED	C1/pins 2 & 3	Wake on LAN connector	C9
Green PC connector	C1/pins 4 & 5	Power fan power	C10
Soft off power supply	C1/pins 6 & 7	SMB connector	C11

Reset switch	C1/pins 9 & 10	Serial port 1	CN1
Power LED & keylock	C1/pins 11 - 15	Serial port 2	CN2
Speaker	C1/pins 17 - 20	Parallel port	CN3
IDE interface LED	C2	Floppy drive interface	CN4
Chassis fan power	C3	IDE interface 1	CN5
IR connector	C4	IDE interface 2	CN6
Wake on modem connector	C5	USB, mouse, IR connector	CN7
Chassis intrusion connector	C6	32-bit PCI slots	PC1 - PC3

USER CONFIGURABLE SETTINGS

Function		Label	Position
»	Keyboard power up disabled	KBP	Pins 1 & 2 closed
	Keyboard power up enabled	KBP	Pins 2 & 3 closed
»	CMOS memory normal operation	RTC	Open
	CMOS memory clear	RTC	Closed
»	Factory configured - do not alter	SW1/4	Unidentified
	Voltage select normal	SW1/5	Off
	Voltage select high	SW1/5	On
	On board audio disabled	SW1/6	Off
	On board audio enabled	SW1/6	On

DIMM CONFIGURATION

Size	Bank 0	Bank 1	Bank 2
8MB	(1) 1M x 64	None	None
16MB	(1) 2M x 64	None	None
16MB	(1) 1M x 64	(1) 1M x 64	None
24MB	(1) 2M x 64	(1) 1M x 64	None

24MB	(1) 1M x 64	(1) 1M x 64	(1) 1M x 64
32MB	(1) 4M x 64	None	None
32MB	(1) 2M x 64	(1) 1M x 64	(1) 1M x 64
32MB	(1) 2M x 64	(1) 2M x 64	None
40MB	(1) 4M x 64	(1) 1M x 64	None
40MB	(1) 2M x 64	(1) 2M x 64	(1) 1M x 64
48MB	(1) 4M x 64	(1) 1M x 64	(1) 1M x 64
48MB	(1) 4M x 64	(1) 2M x 64	None
48MB	(1) 2M x 64	(1) 2M x 64	(1) 2M x 64
56MB	(1) 4M x 64	(1) 2M x 64	(1) 1M x 64
64MB	(1) 8M x 64	None	None

DIMM CONFIGURATION (CON'T)

Size	Bank 0	Bank 1	Bank 2
64MB	(1) 4M x 64	(1) 2M x 64	(1) 2M x 64
64MB	(1) 4M x 64	(1) 4M x 64	None
72MB	(1) 4M x 64	(1) 4M x 64	(1) 1M x 64
80MB	(1) 8M x 64	(1) 1M x 64	(1) 1M x 64
80MB	(1) 8M x 64	(1) 2M x 64	None
80MB	(1) 4M x 64	(1) 4M x 64	(1) 2M x 64
88MB	(1) 8M x 64	(1) 2M x 64	(1) 1M x 64
96MB	(1) 8M x 64	(1) 2M x 64	(1) 2M x 64
128MB	(1) 8M x 64	(1) 4M x 64	(1) 4M x 64
128MB	(1) 8M x 64	(1) 8M x 64	None
144MB	(1) 8M x 64	(1) 8M x 64	(1) 2M x 64
152MB	(1) 16M x 64	(1) 2M x 64	(1) 1M x 64
160MB	(1) 16M x 64	(1) 2M x 64	(1) 2M x 64
160MB	(1) 16M x 64	(1) 4M x 64	None

160MB	(1) 8M x 64	(1) 8M x 64	(1) 4M x 64
168MB	(1) 16M x 64	(1) 4M x 64	(1) 1M x 64
176MB	(1) 16M x 64	(1) 4M x 64	(1) 2M x 64
192MB	(1) 16M x 64	(1) 4M x 64	(1) 4M x 64
192MB	(1) 16M x 64	(1) 8M x 64	None
192MB	(1) 8M x 64	(1) 8M x 64	(1) 8M x 64
256MB	(1) 32M x 64	None	None
256MB	(1) 16M x 64	(1) 8M x 64	(1) 8M x 64
288MB	(1) 32M x 64	(1) 2M x 64	(1) 2M x 64
288MB	(1) 32M x 64	(1) 4M x 64	None
320MB	(1) 32M x 64	(1) 4M x 64	(1) 4M x 64
320MB	(1) 32M x 64	(1) 8M x 64	None
384MB	(1) 32M x 64	(1) 8M x 64	(1) 8M x 64
384MB	(1) 32M x 64	(1) 16M x 64	None
384MB	(1) 16M x 64	(1) 16M x 64	(1) 16M x 64
512MB	(1) 32M x 64	(1) 16M x 64	(1) 16M x 64
512MB	(1) 32M x 64	(1) 32M x 64	None
768MB	(1) 32M x 64	(1) 32M x 64	(1) 32M x 64

Note: Board accepts SDRAM memory.

CACHE CONFIGURATION

Note: 128KB cache is located on the Celeron 300A & 333 CPU.

CPU SPEED SELECTION

CPU speed	Clock speed	Multiplier	SW1/1	SW1/2	SW1/3
300MHz	66MHz	4.5x	Off	Off	Off
333MHz	66MHz	5x	Off	Off	Off
366MHz	66MHz	5.5x	Off	Off	Off

400MHz	66MHz	6x	Off	Off	Off
--------	-------	----	-----	-----	-----

CPU SPEED SELECTION (CON'T)						
CPU speed	Clock speed	Multiplier	SW1/7	SW1/8	SW1/9	SW1/10
300MHz	66MHz	4.5x	On	On	On	Off
333MHz	66MHz	5x	Off	Off	Off	On
366MHz	66MHz	5.5x	On	Off	Off	On
400MHz	66MHz	6x	Off	On	Off	On