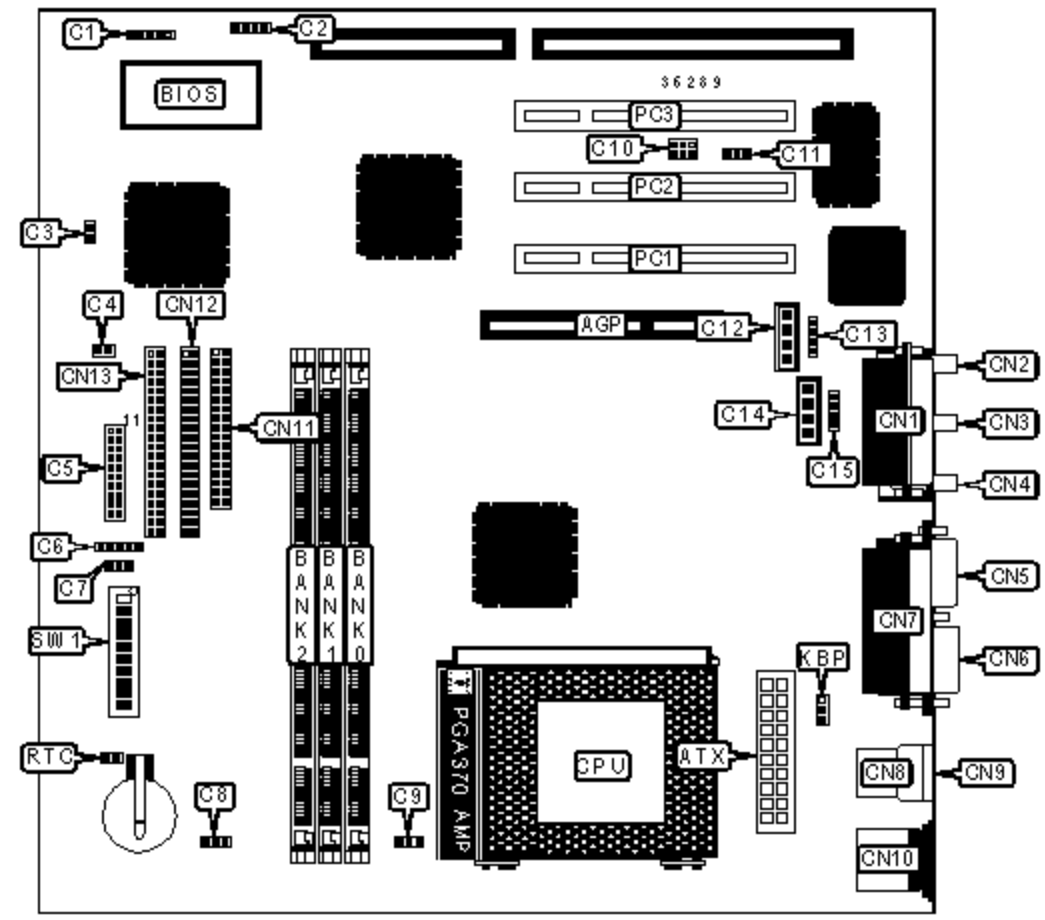


# ASUS COMPUTER INTERNATIONAL

## MEZ-M (REV. 1.03)

<b>Device Type</b>	Mainboard
<b>Processor</b>	Celeron
<b>Processor Speed</b>	300/333/366/400MHz
<b>Chip Set</b>	Intel 440ZX
<b>Maximum Onboard Memory</b>	256MB (SDRAM & PC100 supported)
<b>Audio Chip Set</b>	ESS
<b>Cache</b>	128KB (located on the Celeron CPU)
<b>BIOS</b>	Unidentified
<b>Dimensions</b>	305mm x 244mm
<b>I/O Options</b>	32-bit PCI slots (3), floppy drive interface, game/MIDI port, green PC connector, IDE interfaces (2), parallel port, PS/2 mouse port, serial ports (2), IR connector, USB connectors (2), ATX power connector, AGP slot, line in, line out, microphone in, audio in - CD-ROMs (2), SB-link connector, wake on LAN connector, wake on modem connector



CONNECTIONS			
Purpose	Location	Purpose	Location
AGP slot	AGP	Audio in - CD-ROM	C12
ATX power connector	ATX	Modem connector	C13
SMB connector	C1	Audio in - CD-ROM	C14
Chassis intrusion connector	C2	Auxiliary in	C15
Wake on modem connector	C3	Game/MIDI port	CN1

IDE interface LED	C4	Microphone in	CN2
Turbo LED	C5/pins 2 & 3	Line in	CN3
Green PC connector	C5/pins 4 & 5	Line out	CN4
Soft off power supply	C5/pins 6 & 7	Serial port 2	CN5
Reset switch	C5/pins 9 & 10	Serial port 1	CN6
Power LED & keylock	C5/pins 11 - 15	Parallel port	CN7
Speaker	C5/pins 17 - 20	USB connector 1	CN8
IR connector	C6	USB connector 2	CN9
Chassis fan power	C7	PS/2 mouse port	CN10
Power fan power	C8	Floppy drive interface	CN11
CPU fan power	C9	IDE interface 2	CN12
SB-link connector	C10	IDE interface 1	CN13
Wake on LAN connector	C11	32-bit PCI slots	PC1 - PC3

### USER CONFIGURABLE SETTINGS

Function		Label	Position
»	Keyboard power up disabled	KBP	Pins 1 & 2 closed
	Keyboard power up enabled	KBP	Pins 2 & 3 closed
»	CMOS memory normal operation	RTC	Open
	CMOS memory clear	RTC	Closed
	Voltage select normal	SW1/5	Off
	Voltage select high	SW1/5	On
	On board audio disabled	SW1/6	Off
	On board audio enabled	SW1/6	On

### DIMM CONFIGURATION

Size	Bank 0	Bank 1	Bank 2
------	--------	--------	--------

8MB	(1) 1M x 64	None	None
16MB	(1) 2M x 64	None	None
16MB	(1) 1M x 64	(1) 1M x 64	None
24MB	(1) 2M x 64	(1) 1M x 64	None
24MB	(1) 1M x 64	(1) 1M x 64	(1) 1M x 64
32MB	(1) 4M x 64	None	None
32MB	(1) 2M x 64	(1) 1M x 64	(1) 1M x 64
32MB	(1) 2M x 64	(1) 2M x 64	None
40MB	(1) 4M x 64	(1) 1M x 64	None
40MB	(1) 2M x 64	(1) 2M x 64	(1) 1M x 64

**DIMM CONFIGURATION (CON'T)**

Size	Bank 0	Bank 1	Bank 2
48MB	(1) 4M x 64	(1) 1M x 64	(1) 1M x 64
48MB	(1) 4M x 64	(1) 2M x 64	None
48MB	(1) 2M x 64	(1) 2M x 64	(1) 2M x 64
56MB	(1) 4M x 64	(1) 2M x 64	(1) 1M x 64
64MB	(1) 8M x 64	None	None
64MB	(1) 4M x 64	(1) 2M x 64	(1) 2M x 64
64MB	(1) 4M x 64	(1) 4M x 64	None
72MB	(1) 8M x 64	(1) 1M x 64	None
72MB	(1) 4M x 64	(1) 4M x 64	(1) 1M x 64
80MB	(1) 8M x 64	(1) 1M x 64	(1) 1M x 64
80MB	(1) 8M x 64	(1) 2M x 64	None
80MB	(1) 4M x 64	(1) 4M x 64	(1) 2M x 64
88MB	(1) 8M x 64	(1) 2M x 64	(1) 1M x 64
96MB	(1) 8M x 64	(1) 2M x 64	(1) 2M x 64

96MB	(1) 8M x 64	(1) 4M x 64	None
96MB	(1) 4M x 64	(1) 4M x 64	(1) 4M x 64
104MB	(1) 8M x 64	(1) 4M x 64	(1) 1M x 64
112MB	(1) 8M x 64	(1) 4M x 64	(1) 2M x 64
128MB	(1) 16M x 64	None	None
128MB	(1) 8M x 64	(1) 4M x 64	(1) 4M x 64
128MB	(1) 8M x 64	(1) 8M x 64	None
136MB	(1) 16M x 64	(1) 1M x 64	None
136MB	(1) 8M x 64	(1) 8M x 64	(1) 1M x 64
144MB	(1) 16M x 64	(1) 1M x 64	(1) 1M x 64
144MB	(1) 16M x 64	(1) 2M x 64	None
144MB	(1) 8M x 64	(1) 8M x 64	(1) 2M x 64
152MB	(1) 16M x 64	(1) 2M x 64	(1) 1M x 64
160MB	(1) 16M x 64	(1) 2M x 64	(1) 2M x 64
160MB	(1) 16M x 64	(1) 4M x 64	None
160MB	(1) 8M x 64	(1) 8M x 64	(1) 4M x 64
168MB	(1) 16M x 64	(1) 4M x 64	(1) 1M x 64
176MB	(1) 16M x 64	(1) 4M x 64	(1) 2M x 64
192MB	(1) 16M x 64	(1) 4M x 64	(1) 4M x 64
192MB	(1) 16M x 64	(1) 8M x 64	None
192MB	(1) 8M x 64	(1) 8M x 64	(1) 8M x 64
200MB	(1) 16M x 64	(1) 8M x 64	(1) 1M x 64
208MB	(1) 16M x 64	(1) 8M x 64	(1) 2M x 64
224MB	(1) 16M x 64	(1) 8M x 64	(1) 4M x 64
256MB	(1) 16M x 64	(1) 8M x 64	(1) 8M x 64

Note: Board accepts SDRAM & PC100 memory.

### CACHE CONFIGURATION

Note: 128KB cache is located on the Celeron 300A & 333 CPU.

### CPU SPEED SELECTION

CPU speed	Clock speed	Multiplier	SW1/1	SW1/2	SW1/3	SW1/4
300MHz	66MHz	4.5x	Off	Off	On	On
333MHz	66MHz	5x	Off	Off	On	On
366MHz	66MHz	5.5x	Off	Off	On	On
400MHz	66MHz	6x	Off	Off	On	On

### CPU SPEED SELECTION (CON'T)

CPU speed	Clock speed	Multiplier	SW1/7	SW1/8	SW1/9	SW1/10
300MHz	66MHz	4.5x	On	On	On	Off
333MHz	66MHz	5x	Off	Off	Off	On
366MHz	66MHz	5.5x	On	Off	Off	On
400MHz	66MHz	6x	Off	On	Off	On