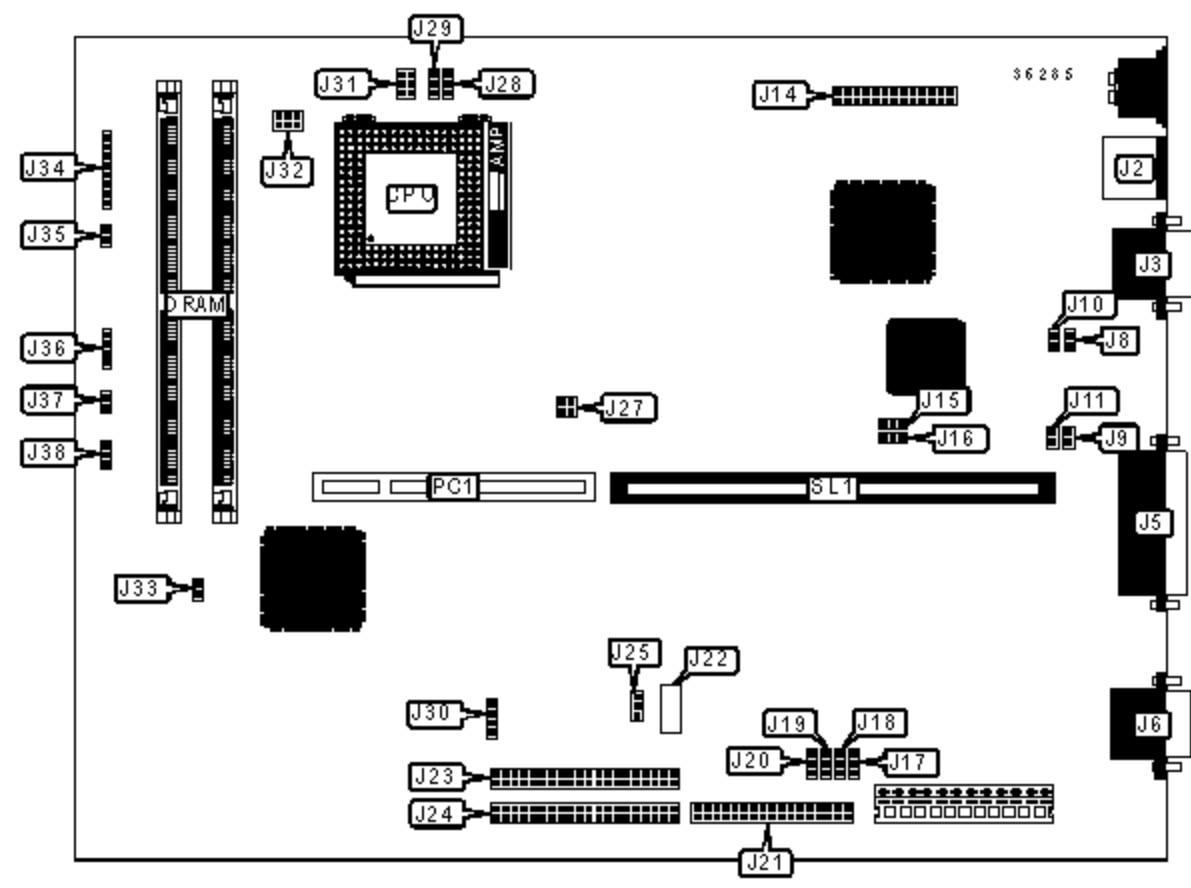


# ZENITH DATA SYSTEMS

## Z-SELECT 100XE

<b>Device Type</b>	Mainboard
<b>Processor</b>	80486SX/80486SX2/80486DX/80486DX2/80486DX4
<b>Processor Speed</b>	25/33/50(internal)/66(internal)/75(internal)/100(internal)MHz
<b>Chip Set</b>	Unidentified
<b>Video Chip Set</b>	Unidentified
<b>Maximum Onboard Memory</b>	64MB
<b>Maximum Video Memory</b>	Unidentified
<b>Cache</b>	128/256/512KB
<b>BIOS</b>	Unidentified
<b>Dimensions</b>	330mm x 218mm
<b>I/O Options</b>	32-bit PCI slot, Ethernet 10Base2 connector, Ethernet 10BaseT connector, AUI connector, floppy drive interface, IDE interfaces (2), parallel port, PS/2 mouse port, serial ports (2), VGA feature connector, VGA port, riser slot



CONNECTIONS			
Purpose	Location	Purpose	Location
PS/2 mouse port	J2	IDE interface 2	J24
VGA port	J3	External battery	J30
Parallel port	J5	Front panel LEDs	J34
Serial port	J6	Keylock	J35
VGA feature connector	J14	Speaker	J36

Floppy drive interface	J21	Chassis fan power	J38
Serial port 2	J22	32-bit PCI slot	PC1
IDE interface 1	J23	Riser slot	SL1

### USER CONFIGURABLE SETTINGS

Function		Label	Position
»	Monitor type select color	J8	Closed
	Monitor type select monochrome	J8	Open
»	VGA IRQ9 disabled	J9	Open
	VGA IRQ9 enabled	J9	Closed
»	Password normal operation	J10	Open
	Password clear	J10	Closed
»	Factory configured - do not alter	J11	Unidentified
»	Boot select normal boot	J17	Pins 2 & 3 closed
	Boot select boot block	J17	Pins 1 & 2 closed
»	Parity enabled	J18	Pins 2 & 3 closed
	Parity disabled	J18	Pins 1 & 2 closed
»	On board video enabled	J19	Pins 2 & 3 closed
	On board video disabled	J19	Pins 1 & 2 closed
»	On board I/O enabled	J20	Pins 2 & 3 closed
	On board I/O disabled	J20	Pins 1 & 2 closed
	LDEV# bypass select ISA backplane	J33	Closed
	LDEV# bypass select PCI backplane	J33	Open
»	On board memory enabled	J37	Open
	On board memory disabled	J37	Closed

**SIMM CONFIGURATION**

<b>Size</b>	<b>Bank 0</b>	<b>Bank 1</b>
4MB	(1) 1M x 36	None
8MB	(1) 2M x 36	None
8MB	(1) 1M x 36	(1) 1M x 36
12MB	(1) 2M x 36	(1) 1M x 36
16MB	(1) 4M x 36	None
16MB	(1) 2M x 36	(1) 2M x 36
20MB	(1) 4M x 36	(1) 1M x 36
24MB	(1) 4M x 36	(1) 2M x 36
32MB	(1) 8M x 36	None
32MB	(1) 4M x 36	(1) 4M x 36
36MB	(1) 8M x 36	(1) 1M x 36
40MB	(1) 8M x 36	(1) 2M x 36
48MB	(1) 8M x 36	(1) 4M x 36
64MB	(1) 8M x 36	(1) 8M x 36

Note: The location of the banks is unidentified.

**CACHE CONFIGURATION**

Note: The location of the cache is unidentified.

**CACHE JUMPER CONFIGURATION**

<b>Size</b>	<b>J27</b>
None	Open
128KB	Open
512KB	Pins 1 & 2, 3 & 4 closed

**VIDEO MEMORY CONFIGURATION**

Note: The location of the video memory is unidentified.

**CPU SPEED SELECTION**

Speed	J25
25MHz	Pins 1 & 2 closed
33MHz	Pins 2 & 3 closed
50iMHz	Pins 1 & 2 closed
66iMHz	Pins 2 & 3 closed
75iMHz	Pins 1 & 2 closed
100iMHz	Pins 2 & 3 closed

**CPU TYPE SELECTION**

Type	J31
80486SX	Pins 5 & 6 closed
80486SX2	Pins 1 & 2, 3 & 4 closed
80486DX	Pins 1 & 2, 3 & 4 closed
80486DX2	Pins 1 & 2, 3 & 4 closed
80486DX4	Pins 1 & 2, 3 & 4 closed

**CPU TYPE SELECTION**

Type	J28
Standard CPU	Pins 2 & 3 closed
S-series CPU	Pins 1 & 2 closed
P24T	Pins 1 & 2 closed

**CPU MULTIPLIER SELECTION**

<b>Multiplier</b>	<b>J29</b>
2x	Pins 3 & 4 closed
3x	Open
Other multiplier	Pins 1 & 2 closed

<b>CPU VOLTAGE SELECTION</b>	
<b>Voltage</b>	<b>J32</b>
3.3v	Pins 1 & 3, 2 & 4 closed
5v	Pins 3 & 5, 4 & 6 closed

<b>DMA CHANNEL SELECTION</b>		
<b>Channel</b>	<b>J15</b>	<b>J16</b>
	Pins 1 & 2 closed	Pins 1 & 2 closed
»	Pins 2 & 3 closed	Pins 2 & 3 closed