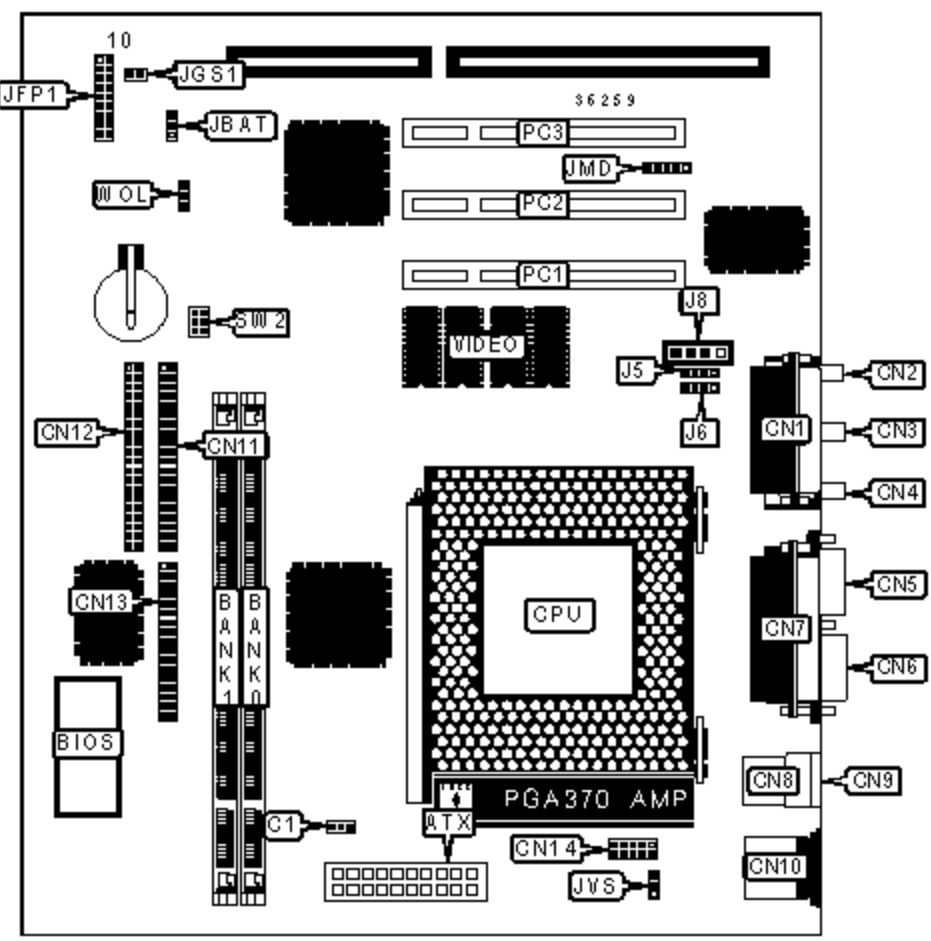


# MICRO-STAR INTERNATIONAL CO., LTD.

## MS-6159

<b>Device Type</b>	Mainboard
<b>Processor</b>	Celeron
<b>Processor Speed</b>	333/400MHz
<b>Chip Set</b>	Intel 440LX
<b>Video Chip Set</b>	ATI
<b>Maximum Onboard Memory</b>	256MB (EDO & SDRAM supported)
<b>Maximum Video Memory</b>	8MB
<b>Audio Chip Set</b>	Creative
<b>Cache</b>	128KB (located on the Celeron CPU)
<b>BIOS</b>	Unidentified
<b>Dimensions</b>	244mm x 190mm
<b>I/O Options</b>	32-bit PCI slots (3), floppy drive interface, game/MIDI port, green PC connector, IDE interfaces (2), parallel port, PS/2 mouse port, serial ports (2), VGA port, USB connectors (2), ATX power connector, line in, line out, microphone in, audio in - CD-ROM, wake on LAN connector, wake on modem connector



### CONNECTIONS

Purpose	Location	Purpose	Location
ATX power connector	ATX	Serial port 2	CN14
CPU fan power	C1	Auxiliary in	J5
Game/MIDI port	CN1	Modem in	J6
Microphone in	CN2	Audio in - CD-ROM	J8

Microphone in	CN2	Audio in - CD-ROM	J5
Line in	CN3	Keylock	JFP1/pins 1 & 10
Line out	CN4	IDE interface LED	JFP1/pins 3 & 12
VGA port	CN5	Power LED	JFP1/pins 4 - 6
Serial port 1	CN6	Soft off power supply	JFP1/pins 7 & 8
Parallel port	CN7	Speaker	JFP1/pins 13 - 16
USB connector 1	CN8	Reset switch	JFP1/pins 17 & 18
USB connector 2	CN9	Green PC connector	JGS1
PS/2 mouse port	CN10	Wake on modem connector	JMD
IDE interface 2	CN11	32-bit PCI slots	PC1 - PC3
IDE interface 1	CN12	Wake on LAN connector	WOL
Floppy drive interface	CN13		

### USER CONFIGURABLE SETTINGS

Function		Label	Position
»	CMOS memory normal operation	JBAT	Pins 1 & 2 closed
	CMOS memory clear	JBAT	Pins 2 & 3 closed
»	Factory configured - do not alter	JVS	Unidentified
»	Factory configured - do not alter	SW2	Unidentified

### DIMM CONFIGURATION

Size	Bank 0	Bank 1
8MB	(1) 1M x 64	None
16MB	(1) 2M x 64	None
16MB	(1) 1M x 64	(1) 1M x 64
24MB	(1) 2M x 64	(1) 1M x 64
32MB	(1) 4M x 64	None
32MB	(1) 2M x 64	(1) 2M x 64

32MB	(1) 2M x 64	(1) 2M x 64
40MB	(1) 4M x 64	(1) 1M x 64
48MB	(1) 4M x 64	(1) 2M x 64
64MB	(1) 8M x 64	None
64MB	(1) 4M x 64	(1) 4M x 64
72MB	(1) 8M x 64	(1) 1M x 64
80MB	(1) 8M x 64	(1) 2M x 64
96MB	(1) 8M x 64	(1) 4M x 64
128MB	(1) 16M x 64	None
128MB	(1) 8M x 64	(1) 8M x 64
136MB	(1) 16M x 64	(1) 1M x 64
144MB	(1) 16M x 64	(1) 2M x 64

#### DIMM CONFIGURATION (CON'T)

Size	Bank 0	Bank 1
160MB	(1) 16M x 64	(1) 4M x 64
192MB	(1) 16M x 64	(1) 8M x 64
256MB	(1) 16M x 64	(1) 16M x 64

Note: Board accepts EDO & SDRAM memory.

#### CACHE CONFIGURATION

Note: 128KB cache is located on the Celeron 300A & 333 CPU.

#### VIDEO MEMORY CONFIGURATION

Note: The video memory is factory installed and is not configurable.