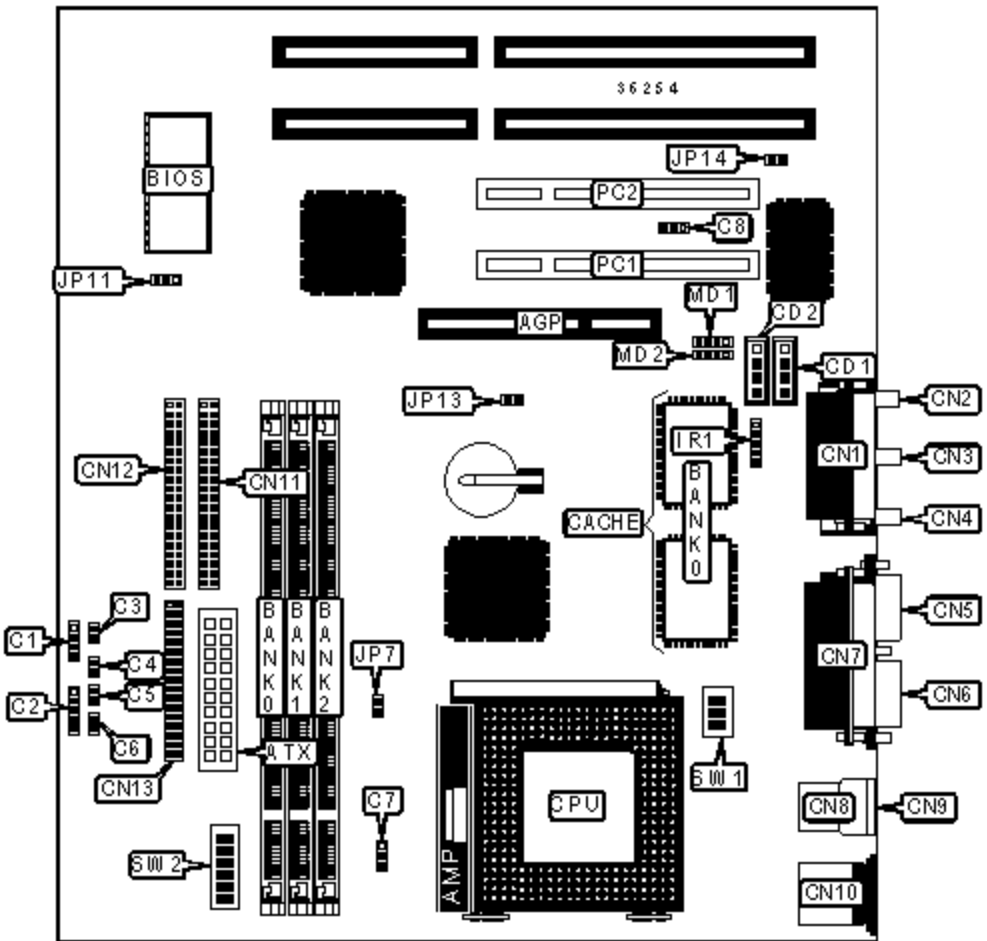


# FREE COMPUTER TECHNOLOGY, INC.

## P5F97

<b>Device Type</b>	Mainboard
<b>Processor</b>	CX 6X86/IBM 6X86/CX 6X86L/IBM 6X86L/CX 686MX/IBM 6X86MX/CX M1/CX M2/CX MII/AM K5/AM K6/Pentium/Pentium MMX
<b>Processor Speed</b>	90/100/120/133/150/166/200/233/266/300/333/350/450MHz
<b>Chip Set</b>	ALI Aladdin
<b>Maximum Onboard Memory</b>	768MB (EDO & SDRAM supported)
<b>Audio Chip Set</b>	ESS
<b>Cache</b>	512/1024KB
<b>BIOS</b>	Unidentified
<b>Dimensions</b>	305mm x 190mm
<b>I/O Options</b>	32-bit PCI slots (4), floppy drive interface, game/MIDI port, IDE interfaces (2), parallel port, PS/2 mouse port, serial ports (2), IR connector, USB connectors (2), ATX power connector, AGP slot, line in, line out, microphone in, audio in - CD-ROMs (2), SB-link connector, wake on LAN connector



CONNECTIONS			
Purpose	Location	Purpose	Location
AGP slot	AGP	Line out	CN4
ATX power connector	ATX	Serial port 2	CN5
Speaker	C1	Serial port 1	CN6
Power LED & keylock	C2	Parallel port	CN7

IDE interface LED	C3	USB connector 1	CN8
Green PC LED	C4	USB connector 2	CN9
Reset switch	C5	PS/2 mouse port	CN10
Soft off power supply	C6	Floppy drive interface	CN11
Chassis fan power	C7	IDE interface 2	CN12
Wake on LAN connector	C8	IDE interface 1	CN13
Audio in - CD-ROM	CD1	IR connector	IR1
Audio in - CD-ROM	CD2	Modem connector	MD1
Game/MIDI port	CN1	Modem connector	MD2
Microphone in	CN2	32-bit PCI slots	PC1 - PC4
Line in	CN3		

### USER CONFIGURABLE SETTINGS

Function		Label	Position
»	CMOS memory normal operation	JP11	Pins 1 & 2 closed
	CMOS memory clear	JP11	Pins 2 & 3 closed
	Over clock disabled	JP13	Open
	Over clock enabled	JP13	Closed
»	On board sound disabled	JP14	Open
	On board sound enabled	JP14	Closed

### DIMM CONFIGURATION

Size	Bank 0	Bank 1	Bank 2
8MB	(1) 1M x 64	None	None
16MB	(1) 2M x 64	None	None
16MB	(1) 1M x 64	(1) 1M x 64	None
24MB	(1) 2M x 64	(1) 1M x 64	None

24MB	(1) 2M x 64	(1) 1M x 64	None
24MB	(1) 1M x 64	(1) 1M x 64	(1) 1M x 64
32MB	(1) 4M x 64	None	None
32MB	(1) 2M x 64	(1) 1M x 64	(1) 1M x 64
32MB	(1) 2M x 64	(1) 2M x 64	None
40MB	(1) 4M x 64	(1) 1M x 64	None
40MB	(1) 2M x 64	(1) 2M x 64	(1) 1M x 64
48MB	(1) 4M x 64	(1) 1M x 64	(1) 1M x 64
48MB	(1) 4M x 64	(1) 2M x 64	None
48MB	(1) 2M x 64	(1) 2M x 64	(1) 2M x 64
56MB	(1) 4M x 64	(1) 2M x 64	(1) 1M x 64
64MB	(1) 8M x 64	None	None

### DIMM CONFIGURATION (CON'T)

Size	Bank 0	Bank 1	Bank 2
64MB	(1) 4M x 64	(1) 2M x 64	(1) 2M x 64
64MB	(1) 4M x 64	(1) 4M x 64	None
72MB	(1) 8M x 64	(1) 1M x 64	None
72MB	(1) 4M x 64	(1) 4M x 64	(1) 1M x 64
80MB	(1) 8M x 64	(1) 1M x 64	(1) 1M x 64
80MB	(1) 8M x 64	(1) 2M x 64	None
80MB	(1) 4M x 64	(1) 4M x 64	(1) 2M x 64
88MB	(1) 8M x 64	(1) 2M x 64	(1) 1M x 64
96MB	(1) 8M x 64	(1) 2M x 64	(1) 2M x 64
96MB	(1) 8M x 64	(1) 4M x 64	None
96MB	(1) 4M x 64	(1) 4M x 64	(1) 4M x 64
104MB	(1) 8M x 64	(1) 4M x 64	(1) 1M x 64
112MB	(1) 8M x 64	(1) 4M x 64	(1) 2M x 64
120MB	(1) 8M x 64	(1) 4M x 64	(1) 2M x 64

128MB	(1) 16M x 64	None	None
128MB	(1) 8M x 64	(1) 4M x 64	(1) 4M x 64
144MB	(1) 16M x 64	(1) 1M x 64	(1) 1M x 64
144MB	(1) 16M x 64	(1) 2M x 64	None
144MB	(1) 8M x 64	(1) 8M x 64	(1) 2M x 64
152MB	(1) 16M x 64	(1) 2M x 64	(1) 1M x 64
160MB	(1) 16M x 64	(1) 2M x 64	(1) 2M x 64
192MB	(1) 16M x 64	(1) 4M x 64	(1) 4M x 64
192MB	(1) 16M x 64	(1) 8M x 64	None
192MB	(1) 8M x 64	(1) 8M x 64	(1) 8M x 64
256MB	(1) 32M x 64	None	None
256MB	(1) 16M x 64	(1) 8M x 64	(1) 8M x 64
264MB	(1) 32M x 64	(1) 1M x 64	None
288MB	(1) 32M x 64	(1) 4M x 64	None
320MB	(1) 32M x 64	(1) 4M x 64	(1) 4M x 64
320MB	(1) 32M x 64	(1) 8M x 64	None
384MB	(1) 32M x 64	(1) 8M x 64	(1) 8M x 64
384MB	(1) 32M x 64	(1) 16M x 64	None
384MB	(1) 16M x 64	(1) 16M x 64	(1) 16M x 64
512MB	(1) 32M x 64	(1) 16M x 64	(1) 16M x 64
512MB	(1) 32M x 64	(1) 32M x 64	None
768MB	(1) 32M x 64	(1) 32M x 64	(1) 32M x 64

Note: Board accepts EDO & SDRAM memory.

### CACHE CONFIGURATION

Size	Bank 0
512KB	(2) 64K x 32
1MB	(2) 128 x 32

**CPU SPEED SELECTION (CX 6X86L)**

CPU speed	Clock speed	Multiplier	SW2/1	SW2/2	SW2/3	SW2/4	SW2/5	SW2/6
150MHz	60MHz	2x	On	Off	Off	On	On	On
166MHz	66MHz	2x	On	Off	Off	Off	On	On
200MHz	75MHz	2x	On	Off	Off	On	On	Off

**CPU SPEED SELECTION (IBM 6X86L)**

CPU speed	Clock speed	Multiplier	SW2/1	SW2/2	SW2/3	SW2/4	SW2/5	SW2/6
150MHz	60MHz	2x	On	Off	Off	On	On	On
166MHz	66MHz	2x	On	Off	Off	Off	On	On
200MHz	75MHz	2x	On	Off	Off	On	On	Off

**CPU SPEED SELECTION (CX 6X86MX)**

CPU speed	Clock speed	Multiplier	SW2/1	SW2/2	SW2/3	SW2/4	SW2/5	SW2/6
166MHz	60MHz	2.5x	On	On	Off	On	On	On
166MHz	66MHz	2x	On	Off	Off	Off	On	On
200MHz	75MHz	2.5x	On	On	Off	On	On	Off
233MHz	75MHz	2.5x	On	On	Off	On	On	Off
233MHz	66MHz	3x	Off	On	Off	Off	On	On

**CPU SPEED SELECTION (IBM 6X86MX)**

CPU speed	Clock speed	Multiplier	SW2/1	SW2/2	SW2/3	SW2/4	SW2/5	SW2/6
166MHz	60MHz	2.5x	On	On	Off	On	On	On
166MHz	66MHz	2x	On	Off	Off	Off	On	On
200MHz	75MHz	2.5x	On	On	Off	On	On	Off
233MHz	75MHz	2.5x	On	On	Off	On	On	Off

233MHz	66MHz	3x	Off	On	Off	Off	On	On
--------	-------	----	-----	----	-----	-----	----	----

**CPU SPEED SELECTION (CX MII)**

CPU speed	Clock speed	Multiplier	SW2/1	SW2/2	SW2/3	SW2/4	SW2/5	SW2/6
233MHz	75MHz	2.5x	On	On	Off	On	On	Off
233MHz	66MHz	3x	Off	On	Off	Off	On	On
266MHz	83MHz	2.5x	On	On	Off	Off	On	Off
333MHz	83MHz	3x	Off	On	Off	Off	On	Off

**CPU SPEED SELECTION (IBM MII)**

CPU speed	Clock speed	Multiplier	SW2/1	SW2/2	SW2/3	SW2/4	SW2/5	SW2/6
233MHz	75MHz	2.5x	On	On	Off	On	On	Off
233MHz	66MHz	3x	Off	On	Off	Off	On	On
266MHz	83MHz	2.5x	On	On	Off	Off	On	Off
333MHz	83MHz	3x	Off	On	Off	Off	On	Off

**CPU SPEED SELECTION (AM K5)**

CPU speed	Clock speed	Multiplier	SW2/1	SW2/2	SW2/3	SW2/4	SW2/5	SW2/6
120MHz	60MHz	1.5x	Off	Off	Off	On	On	On
133MHz	66MHz	1.5x	Off	Off	Off	Off	On	On
150MHz	60MHz	1.75x	On	Off	Off	On	On	On
166MHz	66MHz	1.75x	On	Off	Off	Off	On	On

**CPU SPEED SELECTION (AM K6)**

CPU speed	Clock speed	Multiplier	SW2/1	SW2/2	SW2/3	SW2/4	SW2/5	SW2/6
166MHz	66MHz	2.5x	On	On	Off	Off	On	On
200MHz	66MHz	3x	Off	On	Off	Off	On	On

233MHz	66MHz	3.5x	Off	Off	Off	Off	On	On
266MHz	66MHz	4x	On	Off	On	Off	On	On
300MHz	66MHz	4.5x	On	On	On	Off	On	On

### CPU SPEED SELECTION (AM K6-2)

CPU speed	Clock speed	Multiplier	SW2/1	SW2/2	SW2/3	SW2/4	SW2/5	SW2/6
250MHz	100MHz	2.5x	On	On	Off	Off	Off	Off
266MHz	66MHz	4x	On	Off	On	Off	On	On
300MHz	100MHz	3x	Off	On	Off	Off	Off	Off
333MHz	95MHz	3.5x	Off	Off	Off	On	Off	Off
350MHz	100MHz	3.5x	Off	Off	Off	Off	Off	Off
400MHz	100MHz	4x	On	Off	On	Off	Off	Off

### CPU SPEED SELECTION (INTEL)

CPU speed	Clock speed	Multiplier	SW2/1	SW2/2	SW2/3	SW2/4	SW2/5	SW2/6
90MHz	60MHz	1.5x	Off	Off	Off	On	On	On
100MHz	66MHz	1.5x	Off	Off	Off	Off	On	On
120MHz	60MHz	2x	On	Off	Off	On	On	On
133MHz	66MHz	2x	On	Off	Off	Off	On	On
150MHz	60MHz	2.5x	On	On	Off	On	On	On
166MHz	66MHz	2.5x	On	On	Off	Off	On	On
200MHz	66MHz	3x	Off	On	Off	Off	On	On

### CPU SPEED SELECTION (INTEL OVERDRIVE)

CPU speed	Clock speed	Multiplier	SW2/1	SW2/2	SW2/3	SW2/4	SW2/5	SW2/6
150MHz	60MHz	2.5x	On	Off	Off	On	On	On
166MHz	66MHz	2.5x	On	Off	Off	Off	On	On

200MHz	66MHz	3x	On	On	Off	Off	On	On
--------	-------	----	----	----	-----	-----	----	----

**CPU SPEED SELECTION (INTEL MMX)**

CPU speed	Clock speed	Multiplier	SW2/1	SW2/2	SW2/3	SW2/4	SW2/5	SW2/6
166MHz	66MHz	2.5x	On	On	Off	Off	On	On
200MHz	66MHz	3x	Off	On	Off	Off	On	On
233MHz	66MHz	3.5x	Off	Off	Off	Off	On	On

**CPU TYPE SELECTION**

Type	JP7
Intel P54CTB	Closed
All other CPU types	Open

**CPU VOLTAGE SELECTION**

Voltage	SW1/1	SW1/2	SW1/3
2.0v	Off	Off	Off
2.1v	On	Off	Off
2.2v	Off	On	Off
2.3v	On	On	Off
2.4v	Off	Off	On
2.5v	On	Off	On
2.6v	Off	On	On
2.7v	On	On	On
2.8v	Off	Off	Off
2.9v	On	Off	Off
3.0v	Off	On	Off
3.1v	On	On	Off



3.2v	Off	Off	On
3.3v	On	Off	On
3.4v	Off	On	On
3.5v	On	On	On