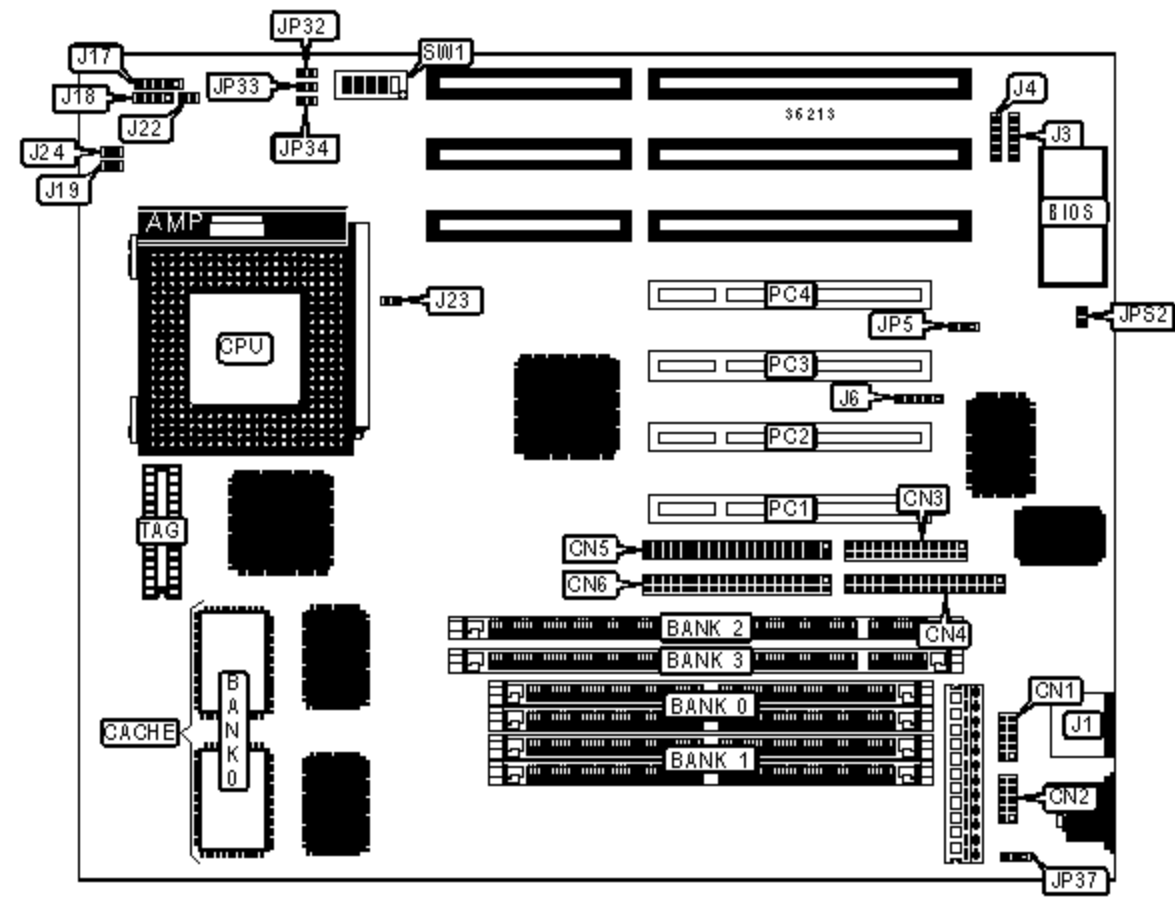


SURIA COMPUTER CORPORATION

SC-5TVX5

Processor	CX 6X86/CX 6X86L/AM K5/Pentium
Processor Speed	75/90/100/120/133/150/166/180/200MHz
Chip Set	Intel
Video Chip Set	None
Maximum Onboard Memory	128MB (EDO supported)
Maximum Video Memory	None
Cache	256/512KB
BIOS	Unidentified
Dimensions	254mm x 218mm
I/O Options	32-bit PCI slots (4), floppy drive interface, green PC connector, IDE interfaces (2), parallel port, PS/2 mouse port, serial ports (2), IR connector, USB connectors (2)
NPU Options	None



CONNECTIONS

Purpose	Location	Purpose	Location
Serial port 2	CN1	IR connector	J6
Serial port 1	CN2	Power LED & keylock	J17
Parallel port	CN3	Speaker	J18
Floppy drive interface	CN4	Reset switch	J19
IDE interface 2	CN5	Turbo LED	J22

IDE interface 1	CN6	Green PC connector	J23
PS/2 mouse port	J1	IDE interface LED	J24
USB connector	J3	CPU fan power	JP37
USB connector	J4	32-bit PCI slots	PC1 - PC4

USER CONFIGURABLE SETTINGS

Function		Label	Position
»	CMOS memory normal operation	JP5	Pins 1 & 2 closed
	CMOS memory clear	JP5	Pins 2 & 3 closed
»	PS/2 mouse disabled	JPS2	Open
	PS/2 mouse enabled	JPS2	Closed

SIMM CONFIGURATION

Size	Bank 0	Bank 1
8MB	(2) 1M x 36	None
16MB	(2) 2M x 36	None
16MB	(2) 1M x 36	(2) 1M x 36
24MB	(2) 2M x 36	(2) 1M x 36
32MB	(2) 4M x 36	None
32MB	(2) 2M x 36	(2) 2M x 36
40MB	(2) 4M x 36	(2) 1M x 36
48MB	(2) 4M x 36	(2) 2M x 36
64MB	(2) 8M x 36	None
64MB	(2) 4M x 36	(2) 4M x 36
72MB	(2) 8M x 36	(2) 1M x 36
80MB	(2) 8M x 36	(2) 2M x 36
96MB	(2) 8M x 36	(2) 4M x 36

133MHz	55MHz	2x	On	Off	On	Off	On
150MHz	60MHz	2x	On	Off	On	Off	Off
166MHz	66MHz	2x	On	Off	Off	On	Off

CPU SPEED SELECTION (AM K5)

CPU speed	Clock speed	Multiplier	SW1/1	SW1/2	SW1/3	SW1/4	SW1/5
75MHz	50MHz	1.5x	Off	Off	On	On	Off
90MHz	60MHz	1.5x	Off	Off	On	Off	Off
100MHz	66MHz	1.5x	Off	Off	Off	On	Off
120MHz	60MHz	1.5x	Off	Off	On	Off	Off
133MHz	66MHz	1.5x	Off	Off	Off	On	Off
150MHz	60MHz	2.5x	On	On	On	Off	Off
166MHz	66MHz	2.5x	On	On	Off	On	Off

CPU SPEED SELECTION (INTEL)

CPU speed	Clock speed	Multiplier	SW1/1	SW1/2	SW1/3	SW1/4	SW1/5
75MHz	50MHz	1.5x	Off	Off	On	On	Off
90MHz	60MHz	1.5x	Off	Off	On	Off	Off
100MHz	66MHz	1.5x	Off	Off	Off	On	Off
100MHz	50MHz	2x	On	Off	On	On	Off
120MHz	60MHz	2x	On	Off	On	Off	Off
133MHz	66MHz	2x	On	Off	Off	On	Off
150MHz	60MHz	2.5x	On	On	On	Off	Off
166MHz	66MHz	2.5x	On	On	Off	On	Off
180MHz	60MHz	3x	Off	On	On	Off	Off
200MHz	66MHz	3x	Off	On	Off	On	Off

CPU VOLTAGE SELECTION (SINGLE)

Voltage		JP32	JP33	JP34
	3.3v	Open	Closed	Open
»	3.52v	Open	Open	Open

CPU VOLTAGE SELECTION (DUAL)

Voltage		JP32	JP33	JP34
	2.7v	Open	Open	Closed
»	2.8v	Open	Open	Open
	2.9v	Closed	Open	Open