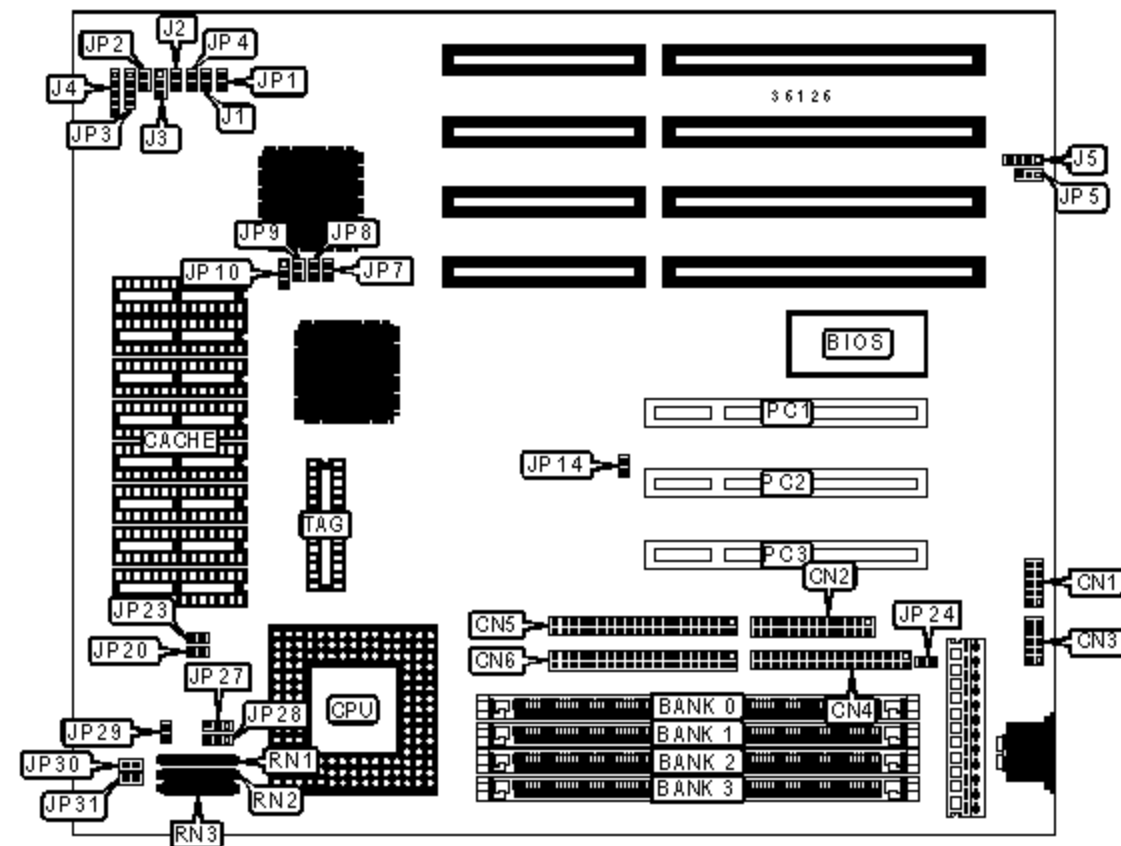


GIGA-BYTE TECHNOLOGY CO., LTD.

GA-486AS

Device Type	Mainboard
Processor	CX486DX2/UMCU5SX/80486SX/80486DX/AM486DX2/80486DX2/ AM486DX4/80486DX4/P24D/P24T
Processor Speed	25/33/50(internal)/66(internal)/75(internal)/100(internal)MHz
Chip Set	Unidentified
Maximum Onboard Memory	128MB
Cache	128/256/512/1024KB
BIOS	Award
Dimensions	250mm x 220mm
I/O Options	32-bit PCI slots (3), floppy drive interface, IDE interfaces (2), parallel port, serial ports (2)



CONNECTIONS

Purpose	Location	Purpose	Location
Serial port 2	CN1	Power LED & keylock	J4
Parallel port	CN2	External battery	J5
Serial port 1	CN3	IDE interface LED	JP1
Floppy drive interface	CN4	Turbo LED	JP2
IDE interface 1	CN5	Speaker	JP3
IDE interface 2	CN6	Green PC LED	JP4

Green PC connector	J1	Green PC power connector	JP24
Reset switch	J2	32-bit PCI slots	PC1 - PC3

USER CONFIGURABLE SETTINGS

Function		Label	Position
»	Turbo enabled	J3	Pins 2 & 3 closed
	Turbo disabled	J3	Pins 1 & 2 closed
»	CMOS memory normal operation	JP5	Pins 1 & 2 closed
	CMOS memory clear	JP5	Pins 2 & 3 closed

SIMM CONFIGURATION

Size	Bank 0	Bank 1	Bank 2	Bank 3
1MB	(1) 256K x 36	None	None	None
2MB	(1) 512K x 36	None	None	None
2MB	(1) 256K x 36	(1) 256K x 36	None	None
3MB	(1) 512K x 36	(1) 256K x 36	None	None
4MB	(1) 1M x 36	None	None	None
4MB	(1) 512K x 36	(1) 256K x 36	(1) 256K x 36	None
4MB	(1) 512K x 36	(1) 512K x 36	None	None
4MB	(1) 256K x 36	(1) 256K x 36	(1) 256K x 36	(1) 256K x 36
5MB	(1) 1M x 36	(1) 256K x 36	None	None
8MB	(1) 2M x 36	None	None	None
8MB	(1) 1M x 36	(1) 512K x 36	(1) 512K x 36	None
8MB	(1) 1M x 36	(1) 1M x 36	None	None
8MB	(1) 512K x 36	(1) 512K x 36	(1) 512K x 36	(1) 512K x 36
9MB	(1) 2M x 36	(1) 256K x 36	None	None
9MB	(1) 256K x 36	(1) 1M x 36	(1) 1M x 36	None

10MB	(1) 512K x 36	(1) 1M x 36	(1) 1M x 36	None
10MB	(1) 512K x 36	(1) 2M x 36	None	None
11MB	(1) 2M x 36	(1) 256K x 36	(1) 256K x 36	(1) 256K x 36
12MB	(1) 2M x 36	(1) 512K x 36	(1) 512K x 36	None
12MB	(1) 2M x 36	(1) 1M x 36	None	None
12MB	(1) 1M x 36	(1) 1M x 36	(1) 1M x 36	None
14MB	(1) 2M x 36	(1) 512K x 36	(1) 512K x 36	(1) 512K x 36
14MB	(1) 512K x 36	(1) 1M x 36	(1) 1M x 36	(1) 1M x 36
16MB	(1) 4M x 36	None	None	None

DIMM/SIMM CONFIGURATION (CON'T)

Size	Bank 0	Bank 1	Bank 2	Bank 3
16MB	(1) 2M x 36	(1) 1M x 36	(1) 1M x 36	None
16MB	(1) 2M x 36	(1) 2M x 36	None	None
16MB	(1) 1M x 36	(1) 1M x 36	(1) 1M x 36	(1) 1M x 36
18MB	(1) 512K x 36	(1) 4M x 36	None	None
19MB	(1) 4M x 36	(1) 256K x 36	(1) 256K x 36	(1) 256K x 36
20MB	(1) 4M x 36	(1) 512K x 36	(1) 512K x 36	None
20MB	(1) 4M x 36	(1) 1M x 36	None	None
24MB	(1) 4M x 36	(1) 1M x 36	(1) 1M x 36	None
24MB	(1) 4M x 36	(1) 2M x 36	None	None
24MB	(1) 2M x 36	(1) 2M x 36	(1) 2M x 36	None
24MB	(1) 2M x 36	(1) 4M x 36	None	None
25MB	(1) 256K x 36	(1) 2M x 36	(1) 2M x 36	(1) 2M x 36
26MB	(1) 512K x 36	(1) 2M x 36	(1) 2M x 36	(1) 2M x 36
28MB	(1) 4M x 36	(1) 1M x 36	(1) 1M x 36	(1) 1M x 36
28MB	(1) 1M x 36	(1) 2M x 36	(1) 2M x 36	(1) 2M x 36
32MB	(1) 8M x 36	None	None	None

32MB	(1) 4M x 36	(1) 2M x 36	(1) 2M x 36	None
32MB	(1) 4M x 36	(1) 4M x 36	None	None
32MB	(1) 2M x 36	(1) 2M x 36	(1) 2M x 36	(1) 2M x 36
33MB	(1) 8M x 36	(1) 256K x 36	None	None
33MB	(1) 256K x 36	(1) 4M x 36	(1) 4M x 36	None
34MB	(1) 512K x 36	(1) 4M x 36	(1) 4M x 36	None
36MB	(1) 1M x 36	(1) 8M x 36	None	None
38MB	(1) 8M x 36	(1) 512K x 36	(1) 512K x 36	(1) 512K x 36
40MB	(1) 2M x 36	(1) 8M x 36	None	None
48MB	(1) 4M x 36	(1) 8M x 36	None	None
56MB	(1) 2M x 36	(1) 4M x 36	(1) 4M x 36	(1) 4M x 36
64MB	(1) 8M x 36	(1) 4M x 36	(1) 4M x 36	None
64MB	(1) 8M x 36	(1) 8M x 36	None	None
68MB	(1) 1M x 36	(1) 8M x 36	(1) 8M x 36	None
72MB	(1) 2M x 36	(1) 8M x 36	(1) 8M x 36	None
80MB	(1) 8M x 36	(1) 4M x 36	(1) 4M x 36	(1) 4M x 36
98MB	(1) 512K x 36	(1) 8M x 36	(1) 8M x 36	(1) 8M x 36
112MB	(1) 4M x 36	(1) 8M x 36	(1) 8M x 36	(1) 8M x 36
128MB	(1) 8M x 36	(1) 8M x 36	(1) 8M x 36	(1) 8M x 36

CACHE CONFIGURATION

Size	Bank 0	Bank 1	TAG
128KB	(4) 32K x 8	None	(1) 8K x 8
256KB	(4) 32K x 8	(4) 32K x 8	(1) 16K x 8
512KB	(4) 64K x 8	(4) 64K x 8	(1) 32K x 8
1MB	(4) 128K x 8	(4) 128K x 8	(1) 64K x 8

Note: The location of the banks are unidentified.

CACHE JUMPER CONFIGURATION

Size	JP7	JP8	JP9	JP10
128KB	Open	Open	Open	Pins 1 & 2 closed
256KB	Closed	Open	Open	Pins 2 & 3 closed
512KB	Closed	Closed	Open	Pins 2 & 3 closed
1MB	Closed	Closed	Closed	Pins 2 & 3 closed

CPU SPEED SELECTION

Speed	JP14
25MHz	Open
33MHz	Closed
50MHz	Open
66MHz	Closed
75MHz	Open
100MHz	Closed

CPU TYPE SELECTION

Type	JP20	JP23	JP27	JP28	JP30
CX 486DX2	Open	Closed	2 & 3	1 & 2	Closed
UMC U5SX	Open	Closed	2 & 3	2 & 3	Open
SL AM486DX2 (WB)	Closed	Closed	1 & 2	1 & 2	Open
SL AM486DX2 (WT)	Closed	Closed	2 & 3	1 & 2	Open
AM 486DX2 (NE)	Closed	Closed	1 & 2	1 & 2	Open
SL AM486DX4 (WB)	Open	Closed	1 & 2	1 & 2	Open
SL AM486DX4 (WT)	Open	Closed	2 & 3	1 & 2	Open
AM 486DX4 (NE)	Closed	Closed	2 & 3	1 & 2	Open
80486SX	Open	Closed	2 & 3	2 & 3	Open
80486DX	Open	Closed	2 & 3	1 & 2	Open

80486DX	Open	Closed	2 & 3	1 & 2	Open
80486DX2	Open	Closed	2 & 3	1 & 2	Open
80486DX4	Open	Closed	2 & 3	1 & 2	Open
P24D (WB)	Open	Open	1 & 2	1 & 2	Open
P24D (WT)	Open	Closed	2 & 3	1 & 2	Open
P24T (WB)	Open	Open	2 & 3	1 & 2	Open
P24T (WT)	Open	Closed	2 & 3	1 & 2	Open

Note: Pins designated should be in the closed position.

CPU TYPE SELECTION (CON'T)				
Type	JP31	RN1	RN2	RN3
CX 486DX2	Open	Installed	Not installed	Not installed
UMC U5SX	Open	Not installed	Installed	Installed
SL AM486DX2 (WB)	Open	Not installed	Installed	Installed
SL AM486DX2 (WT)	Open	Not installed	Installed	Installed
AM 486DX2 (NE)	Open	Not installed	Installed	Installed
SL AM486DX4 (WB)	Open	Not installed	Installed	Installed
SL AM486DX4(WT)	Open	Not installed	Installed	Installed
AM 486DX4 (NE)	Open	Not installed	Installed	Installed
80486SX	Closed	Not installed	Installed	Installed
80486DX	Closed	Not installed	Installed	Installed
80486DX2	Closed	Not installed	Installed	Installed
80486DX4	Closed	Not installed	Installed	Installed
P24D (WB)	Closed	Not installed	Installed	Installed
P24D (WT)	Closed	Not installed	Installed	Installed
P24T (WB)	Closed	Not installed	Installed	Installed
P24T (WT)	Closed	Not installed	Installed	Installed

CPU VOLTAGE SELECTION**Voltage****JP29**

3.3v

Open

5v

Closed