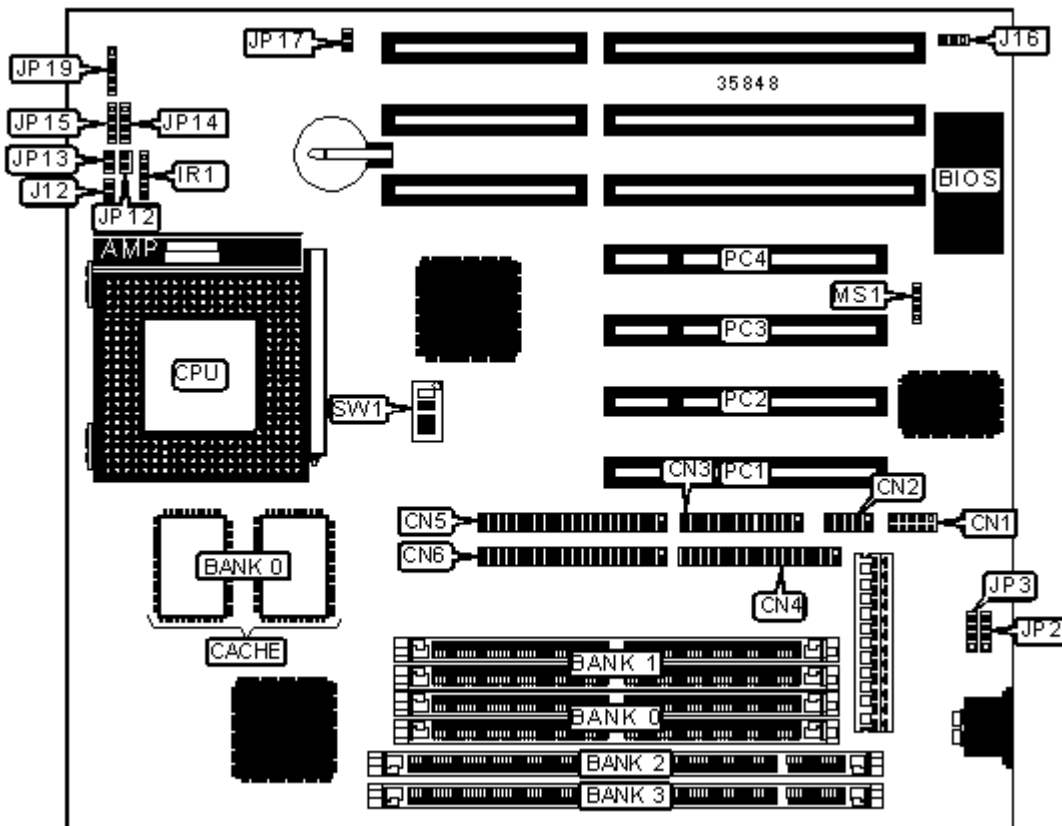


# DATAEXPERT CORPORATION

## TX430

<b>Device Type</b>	Mainboard
<b>Processor</b>	P24T/CX 6X86/IBM 6X86/CX 6X86L/IBM 6X86L/CX 686MX/IBM 6X86MX/CX M1/CX M2/CX MII/AM K5/AM K6/Pentium/Pentium MMX
<b>Processor Speed</b>	75/90/100/120/133/150/166/180/200/233/266/275/300/325/ 333/350/366MHz
<b>Chip Set</b>	Intel 430TX
<b>Maximum Onboard Memory</b>	256MB (EDO & SDRAM supported)
<b>Cache</b>	512KB
<b>BIOS</b>	AMI
<b>Dimensions</b>	305mm x 244mm
<b>I/O Options</b>	32-bit PCI slots (4), floppy drive interface, green PC connector, IDE interfaces (2), parallel port, PS/2 mouse interface, serial ports (2), IR connector, USB connectors (2)



Serial port 1	CN2	Turbo LED	JP12
Parallel port	CN3	Reset switch	JP13
Floppy drive interface	CN4	IDE interface LED	JP14
IDE interface 2	CN5	Speaker	JP15
IDE interface 1	CN6	Power LED & keylock	JP19
IR connector	IR1	PS/2 mouse interface	MS1
Green PC connector	J12	32-bit PCI slots	PC1 – PC4
USB connector 1	JP2		

<b>USER CONFIGURABLE SETTINGS</b>			
<b>Function</b>		<b>Label</b>	<b>Position</b>
	Flash BIOS voltage select 12v	J16	Pins 1 & 2 closed
	Flash BIOS voltage select 5v	J16	Pins 2 & 3 closed
»	CMOS memory normal operation	JP17	Closed
	CMOS memory clear	JP17	Open

<b>SIMM CONFIGURATION</b>		
<b>Size</b>	<b>Bank 0</b>	<b>Bank 1</b>
8MB	(2) 1M x 36	None
16MB	(2) 2M x 36	None
16MB	(2) 1M x 36	(2) 1M x 36
24MB	(2) 2M x 36	(2) 1M x 36
32MB	(2) 4M x 36	None
32MB	(2) 2M x 36	(2) 2M x 36
40MB	(2) 4M x 36	(2) 1M x 36

48MB	(2) 4M x 36	(2) 2M x 36
64MB	(2) 8M x 36	None
64MB	(2) 4M x 36	(2) 4M x 36
72MB	(2) 8M x 36	(2) 1M x 36
80MB	(2) 8M x 36	(2) 2M x 36
96MB	(2) 8M x 36	(2) 4M x 36
128MB	(2) 8M x 36	(2) 8M x 36
128MB	(2) 16M x 36	None

<b>SIMM CONFIGURATION (CON'T)</b>		
<b>Size</b>	<b>Bank 0</b>	<b>Bank 1</b>
136MB	(2) 16M x 36	(2) 1M x 36
144MB	(2) 16M x 36	(2) 2M x 36
160MB	(2) 16M x 36	(2) 4M x 36
192MB	(2) 16M x 36	(2) 8M x 36
256MB	(2) 16M x 36	(2) 16M x 36
Note: Board accepts EDO memory.		

<b>DIMM CONFIGURATION</b>		
<b>Size</b>	<b>Bank 2</b>	<b>Bank 3</b>
8MB	(1) 1M x 64	None
16MB	(1) 2M x 64	None
16MB	(1) 1M x 64	(1) 1M x 64
24MB	(1) 2M x 64	(1) 1M x 64
32MB	(1) 4M x 64	None

32MB	(1) 2M x 64	(1) 2M x 64
40MB	(1) 4M x 64	(1) 1M x 64
48MB	(1) 4M x 64	(1) 2M x 64
64MB	(1) 8M x 64	None
64MB	(1) 4M x 64	(1) 4M x 64
72MB	(1) 8M x 64	(1) 1M x 64
80MB	(1) 8M x 64	(1) 2M x 64
96MB	(1) 8M x 64	(1) 4M x 64
128MB	(1) 16M x 64	None
128MB	(1) 8M x 64	(1) 8M x 64
136MB	(1) 16M x 64	(1) 1M x 64
144MB	(1) 16M x 64	(1) 2M x 64
160MB	(1) 16M x 64	(1) 4M x 64
192MB	(1) 16M x 64	(1) 8M x 64
256MB	(1) 16M x 64	(1) 16M x 64
Note: Board accepts SDRAM memory.		

CACHE CONFIGURATION	
Size	Bank 0
512KB	(2) 64K x 32

CPU SPEED SELECTION (CX 6X86)						
CPU speed	Clock speed	Multiplier	SW1/1	SW1/2	SW1/3	SW1/4
133MHz	55MHz	2x	Off	On	On	On
150MHz	60MHz	2x	Off	On	Off	On

166MHz	66MHz	2x	Off	On	Off	Off
200MHz	75MHz	2x	Off	On	On	Off

CPU SPEED SELECTION (CX 6X86MX)						
CPU speed	Clock speed	Multiplier	SW1/1	SW1/2	SW1/3	SW1/4
166MHz	66MHz	2.5x	On	On	Off	Off
200MHz	66MHz	3x	On	Off	Off	Off
233MHz	66MHz	3.5x	Off	Off	Off	Off

CPU SPEED SELECTION (AM K5)						
CPU speed	Clock speed	Multiplier	SW1/1	SW1/2	SW1/3	SW1/4
100MHz	66MHz	1.5x	Off	Off	Off	Off
133MHz	66MHz	2x	Off	On	Off	Off
166MHz	66MHz	2.5x	On	On	Off	Off

CPU SPEED SELECTION (AM K6)						
CPU speed	Clock speed	Multiplier	SW1/1	SW1/2	SW1/3	SW1/4
166MHz	66MHz	2.5x	On	On	Off	Off
200MHz	66MHz	3x	On	Off	Off	Off
233MHz	66MHz	3.5x	Off	Off	Off	Off

CPU SPEED SELECTION (INTEL)						
CPU speed	Clock speed	Multiplier	SW1/1	SW1/2	SW1/3	SW1/4
90MHz	60MHz	1.5x	Off	Off	Off	On
100MHz	66MHz	1.5x	Off	Off	Off	Off

120MHz	60MHz	2x	Off	On	Off	On
133MHz	66MHz	2x	Off	On	Off	Off
150MHz	60MHz	2.5x	On	On	Off	On
166MHz	66MHz	2.5x	On	On	Off	Off
180MHz	60MHz	3x	On	Off	Off	On
200MHz	66MHz	3x	On	Off	Off	Off

<b>CPU SPEED SELECTION (INTEL MMX)</b>						
<b>CPU speed</b>	<b>Clock speed</b>	<b>Multiplier</b>	<b>SW1/1</b>	<b>SW1/2</b>	<b>SW1/3</b>	<b>SW1/4</b>
166MHz	66MHz	2.5x	On	On	Off	Off
200MHz	66MHz	3x	On	Off	Off	Off
233MHz	66MHz	3.5x	Off	Off	Off	Off

<b>CPU TYPE SELECTION</b>				
<b>Type</b>	<b>SW1/1</b>	<b>SW1/2</b>	<b>SW1/3</b>	<b>SW1/4</b>
AM K5-166	On	On	On	On
Intel	Off	Off	Off	On

Note: Use this setting only if SMART SOFT is enabled in the BIOS.