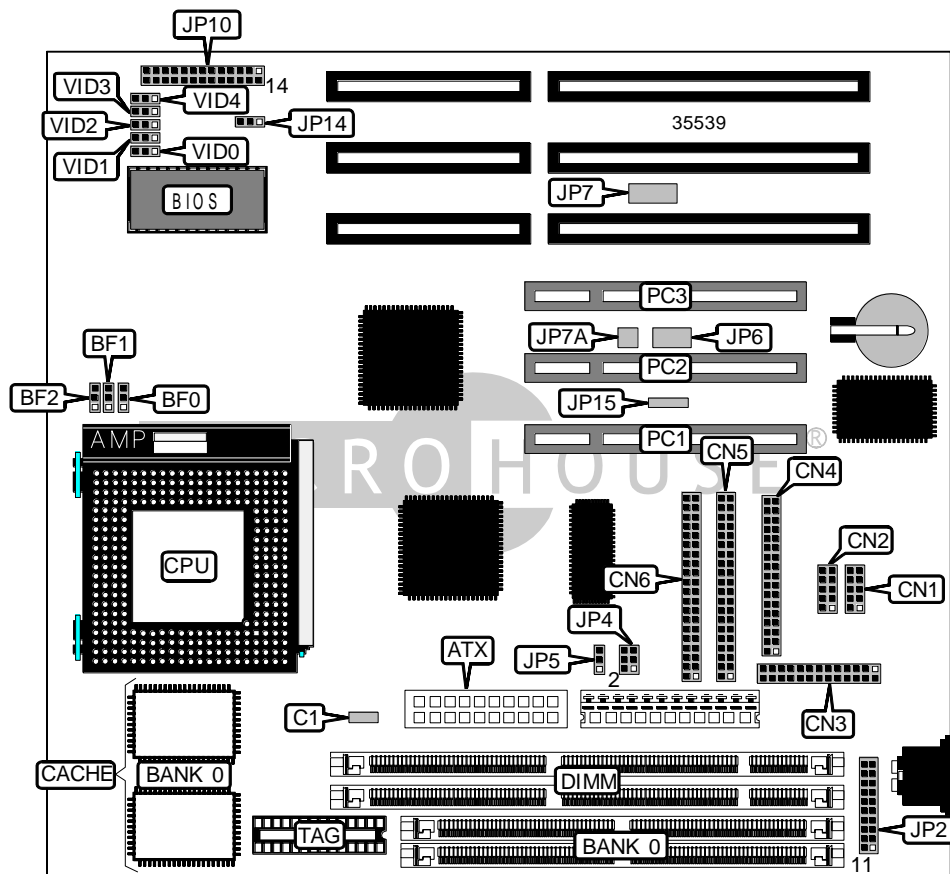


ZIDA TECHNOLOGIES INC.

5STX-J98 (VER. 1.01)

| | |
|-------------------------------|--|
| Device Type | Mainboard |
| Processor | CX 6X86/IBM 6X86/CX 6X86MX/IBM 6X86MX/IDT C6/AM K5/ AM K6/Pentium/Pentium MMX |
| Processor Speed | 90/100/120/133/150/166/200/225/233/266/300MHz |
| Chip Set | Intel 430TX |
| Video Chip Set | None |
| Maximum Onboard Memory | 256MB (EDO & SDRAM supported) |
| Maximum Video Memory | None |
| Cache | 256/512KB |
| BIOS | Award |
| Dimensions | 234mm x 220mm |
| I/O Options | 32-bit PCI slots (3), floppy drive interface, green PC connector, IDE interfaces (2), parallel port, PS/2 mouse interface, serial ports (2), IR connector, USB connectors (2), ATX power connector |
| NPU Options | None |



Continued on next page...

ZIDA TECHNOLOGIES INC.
5STX-J98 (VER. 1.01)

... continued from previous page

| CONNECTIONS | | | |
|------------------------|------------------|-----------------------|-------------------|
| Purpose | Location | Purpose | Location |
| ATX power connector | ATX | SB/TB-link connector | JP6 |
| CPU fan power | C1 | TB-link connector | JP7 |
| Serial port 1 | CN1 | TB-link connector | JP7A |
| Serial port 2 | CN2 | Power LED & keylock | JP10/pins 1 – 5 |
| Parallel port | CN3 | Green PC connector | JP10/pins 7 & 8 |
| Floppy drive interface | CN4 | Speaker | JP10/pins 10 – 13 |
| IDE interface 1 | CN5 | IDE interface LED | JP10/pins 14 & 15 |
| IDE interface 2 | CN6 | Soft off power supply | JP10/pins 16 & 17 |
| USB connector 1 | JP2/pins 1 - 5 | Reset switch | JP10/pins 22 & 23 |
| PS/2 mouse interface | JP2/pins 6 – 10 | Wake on LAN connector | JP15 |
| USB connector 2 | JP2/pins 11 – 15 | 32-bit PCI slots | PC1 – PC3 |
| IR connector | JP2/pins 16 - 20 | | |

| USER CONFIGURABLE SETTINGS | | |
|----------------------------|-------|-------------------|
| Function | Label | Position |
| Auto jumper enabled | JP14 | Pins 1 & 2 closed |
| Auto jumper disabled | JP14 | Pins 2 & 3 closed |

| SIMM CONFIGURATION | |
|--------------------|--------------|
| Size | Bank 0 |
| 8MB | (2) 1M x 36 |
| 16MB | (2) 2M x 36 |
| 32MB | (2) 4M x 36 |
| 64MB | (2) 8M x 36 |
| 128MB | (2) 16M x 36 |
| 256MB | (2) 32M x 36 |

Note: Board accepts EDO memory.

| DIMM CONFIGURATION | | |
|--------------------|-------------|-------------|
| Size | Bank 1 | Bank 2 |
| 8MB | (1) 1M x 64 | None |
| 16MB | (1) 2M x 64 | None |
| 16MB | (1) 1M x 64 | (1) 1M x 64 |
| 24MB | (1) 2M x 64 | (1) 1M x 64 |
| 32MB | (1) 4M x 64 | None |
| 32MB | (1) 2M x 64 | (1) 2M x 64 |

Continued on next page...

ZIDA TECHNOLOGIES INC.
5STX-J98 (VER. 1.01)

... continued from previous page

| DIMM CONFIGURATION (CON'T) | | |
|----------------------------|--------------|--------------|
| Size | Bank 1 | Bank 2 |
| 40MB | (1) 4M x 64 | (1) 1M x 64 |
| 48MB | (1) 4M x 64 | (1) 2M x 64 |
| 64MB | (1) 8M x 64 | None |
| 64MB | (1) 4M x 64 | (1) 4M x 64 |
| 72MB | (1) 8M x 64 | (1) 1M x 64 |
| 80MB | (1) 8M x 64 | (1) 2M x 64 |
| 96MB | (1) 8M x 64 | (1) 4M x 64 |
| 128MB | (1) 16M x 64 | None |
| 128MB | (1) 8M x 64 | (1) 8M x 64 |
| 136MB | (1) 16M x 64 | (1) 1M x 64 |
| 144MB | (1) 16M x 64 | (1) 2M x 64 |
| 160MB | (1) 16M x 64 | (1) 4M x 64 |
| 192MB | (1) 16M x 64 | (1) 8M x 64 |
| 256MB | (1) 16M x 64 | (1) 16M x 64 |

Note: Board accepts SDRAM memory.

| CACHE CONFIGURATION | | |
|---------------------|--------------|--------------|
| Size | Bank 0 | TAG |
| 256KB | (2) 32K x 32 | Unidentified |
| 512KB | (2) 64K x 32 | Unidentified |

| CPU SPEED SELECTION (CX 6X86) | | | | | | | |
|-------------------------------|-------------|------------|-------|-------|-------|--------------|-------|
| CPU speed | Clock speed | Multiplier | BF0 | BF1 | BF2 | JP4 | JP5 |
| 150MHz | 60MHz | 2x | 2 & 3 | 1 & 2 | 1 & 2 | 2 & 4, 3 & 5 | 1 & 2 |
| 166MHz | 66MHz | 2x | 2 & 3 | 1 & 2 | 1 & 2 | 1 & 3, 2 & 4 | 1 & 2 |

Note: Pins designated should be in the closed position.

| CPU SPEED SELECTION (IBM 6X86) | | | | | | | |
|--------------------------------|-------------|------------|-------|-------|-------|--------------|-------|
| CPU speed | Clock speed | Multiplier | BF0 | BF1 | BF2 | JP4 | JP5 |
| 150MHz | 60MHz | 2x | 2 & 3 | 1 & 2 | 1 & 2 | 2 & 4, 3 & 5 | 1 & 2 |
| 166MHz | 66MHz | 2x | 2 & 3 | 1 & 2 | 1 & 2 | 1 & 3, 2 & 4 | 1 & 2 |

Note: Pins designated should be in the closed position.

Continued on next page. . .

ZIDA TECHNOLOGIES INC.
5STX-J98 (VER. 1.01)

... continued from previous page

| CPU SPEED SELECTION (CX 6X86MX) | | | | | | | |
|---------------------------------|-------------|------------|-------|-------|-------|--------------|-------|
| CPU speed | Clock speed | Multiplier | BF0 | BF1 | BF2 | JP4 | JP5 |
| 200MHz | 75MHz | 2x | 2 & 3 | 1 & 2 | 1 & 2 | 1 & 3, 4 & 6 | 1 & 2 |
| 233MHz | 66MHz | 3x | 1 & 2 | 2 & 3 | 1 & 2 | 1 & 3, 2 & 4 | 1 & 2 |
| 266MHz | 66MHz | 3.5x | 1 & 2 | 1 & 2 | 1 & 2 | 1 & 3, 2 & 4 | 1 & 2 |
| 300MHz | 66MHz | 3.5x | 1 & 2 | 1 & 2 | 1 & 2 | 1 & 3, 2 & 4 | 1 & 2 |

Note: Pins designated should be in the closed position.

| CPU SPEED SELECTION (IBM 6X86MX) | | | | | | | |
|----------------------------------|-------------|------------|-------|-------|-------|--------------|-------|
| CPU speed | Clock speed | Multiplier | BF0 | BF1 | BF2 | JP4 | JP5 |
| 200MHz | 75MHz | 2x | 2 & 3 | 1 & 2 | 1 & 2 | 1 & 3, 4 & 6 | 1 & 2 |
| 233MHz | 66MHz | 3x | 1 & 2 | 2 & 3 | 1 & 2 | 1 & 3, 2 & 4 | 1 & 2 |
| 266MHz | 66MHz | 3.5x | 1 & 2 | 1 & 2 | 1 & 2 | 1 & 3, 2 & 4 | 1 & 2 |
| 300MHz | 66MHz | 3.5x | 1 & 2 | 1 & 2 | 1 & 2 | 1 & 3, 2 & 4 | 1 & 2 |

Note: Pins designated should be in the closed position.

| CPU SPEED SELECTION (IDT C6) | | | | | | | |
|------------------------------|-------------|------------|-------|-------|-------|--------------|-------|
| CPU speed | Clock speed | Multiplier | BF0 | BF1 | BF2 | JP4 | JP5 |
| 150MHz | 50MHz | 3x | 1 & 2 | 2 & 3 | 1 & 2 | 3 & 5, 4 & 6 | 2 & 3 |
| 150MHz | 75MHz | 2x | 2 & 3 | 1 & 2 | 1 & 2 | 1 & 3, 4 & 6 | 1 & 2 |
| 180MHz | 60MHz | 3x | 1 & 2 | 2 & 3 | 1 & 2 | 2 & 4, 3 & 5 | 1 & 2 |
| 200MHz | 66MHz | 3x | 1 & 2 | 2 & 3 | 1 & 2 | 1 & 3, 2 & 4 | 1 & 2 |
| 225MHz | 75MHz | 3x | 1 & 2 | 2 & 3 | 1 & 2 | 1 & 3, 4 & 6 | 1 & 2 |

Note: Pins designated should be in the closed position.

| CPU SPEED SELECTION (AM K5) | | | | | | | |
|-----------------------------|-------------|------------|-------|-------|-------|--------------|-------|
| CPU speed | Clock speed | Multiplier | BF0 | BF1 | BF2 | JP4 | JP5 |
| 90MHz | 60MHz | 1.5x | 1 & 2 | 1 & 2 | 1 & 2 | 2 & 4, 3 & 5 | 1 & 2 |
| 100MHz | 66MHz | 1.5x | 1 & 2 | 1 & 2 | 1 & 2 | 1 & 3, 2 & 4 | 1 & 2 |
| 133MHz | 66MHz | 1.5x | 1 & 2 | 1 & 2 | 1 & 2 | 1 & 3, 2 & 4 | 1 & 2 |
| 166MHz | 66MHz | 2.5x | 2 & 3 | 2 & 3 | 1 & 2 | 1 & 3, 2 & 4 | 1 & 2 |

Note: Pins designated should be in the closed position.

Continued on next page...

ZIDA TECHNOLOGIES INC.
5STX-J98 (VER. 1.01)

... continued from previous page

| CPU SPEED SELECTION (AM K6) | | | | | | | |
|-----------------------------|-------------|------------|-------|-------|-------|--------------|-------|
| CPU speed | Clock speed | Multiplier | BF0 | BF1 | BF2 | JP4 | JP5 |
| 166MHz | 66MHz | 2.5x | 2 & 3 | 2 & 3 | 1 & 2 | 1 & 3, 2 & 4 | 1 & 2 |
| 200MHz | 66MHz | 3x | 1 & 2 | 2 & 3 | 1 & 2 | 1 & 3, 2 & 4 | 1 & 2 |
| 233MHz | 66MHz | 3.5x | 1 & 2 | 1 & 2 | 1 & 2 | 1 & 3, 2 & 4 | 1 & 2 |
| 266MHz | 66MHz | 4x | 2 & 3 | 1 & 2 | 2 & 3 | 1 & 3, 2 & 4 | 1 & 2 |
| 300MHz | 66MHz | 4.5x | 2 & 3 | 2 & 3 | 2 & 3 | 1 & 3, 2 & 4 | 1 & 2 |

Note: Pins designated should be in the closed position.

| CPU SPEED SELECTION (INTEL) | | | | | | | |
|-----------------------------|-------------|------------|-------|-------|-------|--------------|-------|
| CPU speed | Clock speed | Multiplier | BF0 | BF1 | BF2 | JP4 | JP5 |
| 90MHz | 60MHz | 1.5x | 1 & 2 | 1 & 2 | 1 & 2 | 2 & 4, 3 & 5 | 1 & 2 |
| 100MHz | 66MHz | 1.5x | 1 & 2 | 1 & 2 | 1 & 2 | 1 & 3, 2 & 4 | 1 & 2 |
| 120MHz | 60MHz | 2x | 2 & 3 | 1 & 2 | 1 & 2 | 2 & 4, 3 & 5 | 1 & 2 |
| 133MHz | 66MHz | 2x | 2 & 3 | 1 & 2 | 1 & 2 | 1 & 3, 2 & 4 | 1 & 2 |
| 150MHz | 60MHz | 2.5x | 2 & 3 | 2 & 3 | 1 & 2 | 2 & 4, 3 & 5 | 1 & 2 |
| 166MHz | 66MHz | 2.5x | 2 & 3 | 2 & 3 | 1 & 2 | 1 & 3, 2 & 4 | 1 & 2 |
| 200MHz | 66MHz | 3x | 1 & 2 | 2 & 3 | 1 & 2 | 1 & 3, 2 & 4 | 1 & 2 |

Note: Pins designated should be in the closed position.

| CPU SPEED SELECTION (INTEL MMX) | | | | | | | |
|---------------------------------|-------------|------------|-------|-------|-------|--------------|-------|
| CPU speed | Clock speed | Multiplier | BF0 | BF1 | BF2 | JP4 | JP5 |
| 166MHz | 66MHz | 2.5x | 2 & 3 | 2 & 3 | 1 & 2 | 1 & 3, 2 & 4 | 1 & 2 |
| 200MHz | 66MHz | 3x | 1 & 2 | 2 & 3 | 1 & 2 | 1 & 3, 2 & 4 | 1 & 2 |
| 233MHz | 66MHz | 3.5x | 1 & 2 | 1 & 2 | 1 & 2 | 1 & 3, 2 & 4 | 1 & 2 |

Note: Pins designated should be in the closed position.

| CPU VOLTAGE SELECTION | | | | | |
|-----------------------|-------|-------|-------|-------|-------|
| Voltage | VID0 | VID1 | VID2 | VID3 | VID4 |
| 2.2v | 1 & 2 | 2 & 3 | 1 & 2 | 1 & 2 | 1 & 2 |
| 2.8v | 1 & 2 | 1 & 2 | 1 & 2 | 2 & 3 | 1 & 2 |
| 2.9v | 2 & 3 | 1 & 2 | 1 & 2 | 2 & 3 | 1 & 2 |
| 3.2v | 1 & 2 | 1 & 2 | 2 & 3 | 2 & 3 | 1 & 2 |
| 3.3v | 2 & 3 | 1 & 2 | 2 & 3 | 2 & 3 | 1 & 2 |
| 3.4v | 1 & 2 | 2 & 3 | 2 & 3 | 2 & 3 | 1 & 2 |
| 3.5v | 2 & 3 | 2 & 3 | 2 & 3 | 2 & 3 | 1 & 2 |

Note: Pins designated should be in the closed position.