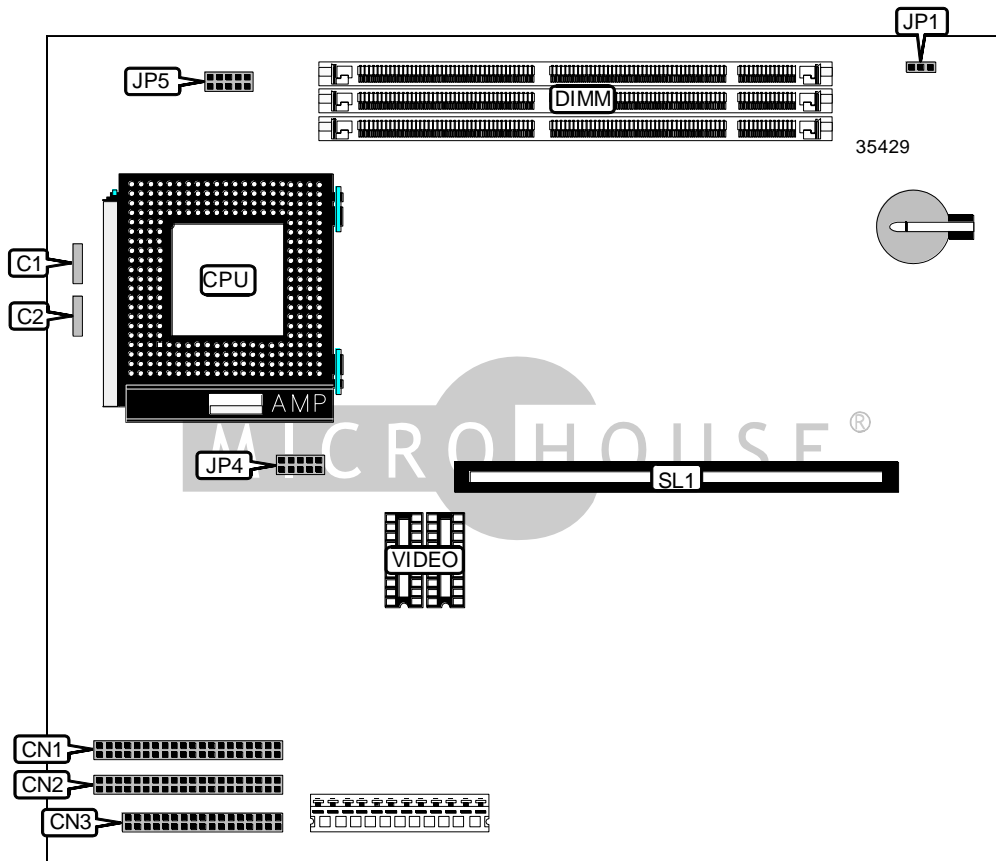


HEWLETT-PACKARD COMPANY HP BRIO 83XX (VER. 2)

Device Type	Mainboard
Processor	AM K6/Pentium/Pentium MMX
Processor Speed	166/200/233MHz
Chip Set	Unidentified
Video Chip Set	Unidentified
Maximum Onboard Memory	192MB (SDRAM supported)
Maximum Video Memory	2MB
Cache	Unidentified
BIOS	Unidentified
Dimensions	254mm x 218mm
I/O Options	Floppy drive interface, IDE interfaces (2), riser slot
NPU Options	None



Continued on next page...

HEWLETT-PACKARD COMPANY
 HP BRIO 83XX (VER. 2)

... continued from previous page

CONNECTIONS			
Purpose	Location	Purpose	Location
Status panel connector	C1	IDE interface 1	CN2
Chassis fan power	C2	Floppy drive interface	CN3
IDE interface 2	CN1	Riser slot	SL1
Note: The type and location of the rear panel connectors are unidentified.			

USER CONFIGURABLE SETTINGS		
Function	Label	Position
CMOS memory normal operation	JP1	Pins 1 & 2 closed
CMOS memory clear	JP1	Pins 2 & 3 closed

DIMM CONFIGURATION			
Size	Bank 0	Bank 1	Bank 2
16MB	(1) 2M x 64	None	None
32MB	(1) 4M x 64	None	None
32MB	(1) 2M x 64	(1) 2M x 64	None
48MB	(1) 4M x 64	(1) 2M x 64	None
48MB	(1) 2M x 64	(1) 2M x 64	(1) 2M x 64
64MB	(1) 8M x 64	None	None
64MB	(1) 4M x 64	(1) 2M x 64	(1) 2M x 64
64MB	(1) 4M x 64	(1) 4M x 64	None
80MB	(1) 8M x 64	(1) 2M x 64	None
80MB	(1) 4M x 64	(1) 4M x 64	(1) 2M x 64
96MB	(1) 8M x 64	(1) 2M x 64	(1) 2M x 64
96MB	(1) 8M x 64	(1) 4M x 64	None
96MB	(1) 4M x 64	(1) 4M x 64	(1) 4M x 64
112MB	(1) 8M x 64	(1) 4M x 64	(1) 2M x 64
128MB	(1) 16M x 64	None	None
128MB	(1) 8M x 64	(1) 4M x 64	(1) 4M x 64
128MB	(1) 8M x 64	(1) 8M x 64	None
136MB	(1) 8M x 64	(1) 8M x 64	(1) 1M x 64
144MB	(1) 8M x 64	(1) 8M x 64	(1) 2M x 64
160MB	(1) 8M x 64	(1) 8M x 64	(1) 4M x 64
192MB	(1) 8M x 64	(1) 8M x 64	(1) 8M x 64

Continued on next page...

HEWLETT-PACKARD COMPANY
 HP BRIO 83XX (VER. 2)

... continued from previous page

VIDEO MEMORY CONFIGURATION		
Size	Bank 0	Bank 1
1MB	(1) 256K x 16	None
2MB	(1) 256K x 16	(1) 256K x 16

CPU SPEED SELECTION (AM K6)			
CPU speed	Clock speed	Multiplier	JP5
166MHz	66MHz	2.5x	Pins 3 & 4, 5 & 6 closed
200MHz	66MHz	3x	Pins 5 & 6 closed
233MHz	66MHz	3.5x	Open

CPU SPEED SELECTION (INTEL)			
CPU speed	Clock speed	Multiplier	JP5
166MHz	66MHz	2.5x	Pins 3 & 4, 5 & 6 closed
200MHz	66MHz	3x	Pins 5 & 6 closed

CPU SPEED SELECTION (INTEL MMX)			
CPU speed	Clock speed	Multiplier	JP5
166MHz	66MHz	2.5x	Pins 3 & 4, 5 & 6 closed
200MHz	66MHz	3x	Pins 5 & 6 closed
233MHz	66MHz	3.5x	Open

CPU VOLTAGE SELECTION	
Voltage	JP4
2.14v	Pins 1 & 2 closed
2.84v	Pins 7 & 8 closed
3.54v	Pins 1 & 2, 3 & 4, 5 & 6, 7 & 8 closed