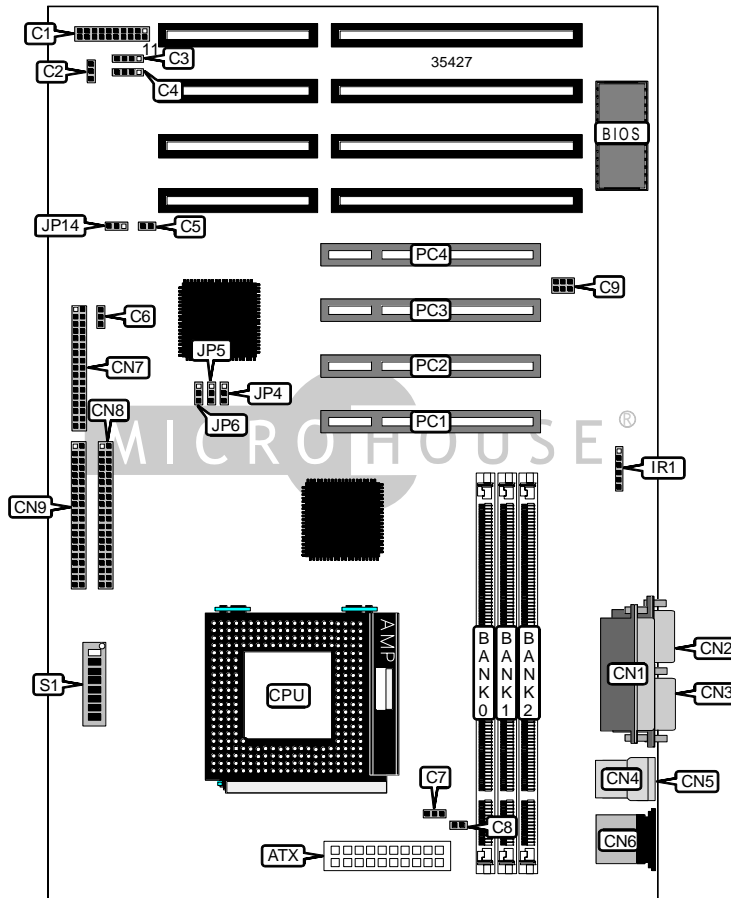


ACER, INC. AX5TC

Device Type	Mainboard
Processor	CX 6X86/CX 6X86L/CX 686MX/AM K5/AM K6/IDT/Pentium/Pentium MMX
Processor Speed	90/100/120/133/150/166/180/200/233/266/300MHz
Chip Set	Intel
Video Chip Set	None
Maximum Onboard Memory	256MB (EDO & SDRAM supported)
Maximum Video Memory	None
Cache	512KB
BIOS	Award
Dimensions	305mm x 208mm
I/O Options	32-bit PCI slots (4), floppy drive interface, green PC connector, IDE interfaces (2), parallel port, PS/2 mouse port, serial ports (2), IR connector, USB connectors (2), ATX power connector
NPU Options	None



Continued on next page. . .

ACER, INC.
AX5TC

... continued from previous page

CONNECTIONS			
Purpose	Location	Purpose	Location
ATX power connector	ATX	Parallel port	CN1
Power LED & keylock	C1/pins 1 - 5	Serial port 2	CN2
Speaker	C1/pins 7 - 10	Serial port 1	CN3
Reset switch	C1/pins 19 & 20	USB connector 1	CN4
Wake on LAN connector	C2	USB connector 2	CN5
Wake on modem connector	C3	PS/2 mouse port	CN6
IDE interface LED	C4	Floppy drive interface	CN7
Soft off power supply	C5	IDE interface 2	CN8
Chassis fan power	C6	IDE interface 1	CN9
Chassis fan power	C7	IR connector	IR1
Chassis fan power	C8	32-bit PCI slots	PC1 - PC4
SB link connector	C9		

USER CONFIGURABLE SETTINGS		
Function	Label	Position
↑ CMOS memory normal operation	JP14	Pins 1 & 2 closed
CMOS memory clear	JP14	Pins 2 & 3 closed

DIMM CONFIGURATION			
Size	Bank 0	Bank 1	Bank 2
8MB	(1) 1M x 64	None	None
16MB	(1) 2M x 64	None	None
16MB	(1) 1M x 64	(1) 1M x 64	None
24MB	(1) 2M x 64	(1) 1M x 64	None
24MB	(1) 1M x 64	(1) 1M x 64	(1) 1M x 64
32MB	(1) 4M x 64	None	None
32MB	(1) 2M x 64	(1) 1M x 64	(1) 1M x 64
32MB	(1) 2M x 64	(1) 2M x 64	None
40MB	(1) 4M x 64	(1) 1M x 64	None
40MB	(1) 2M x 64	(1) 2M x 64	(1) 1M x 64
48MB	(1) 4M x 64	(1) 1M x 64	(1) 1M x 64
48MB	(1) 4M x 64	(1) 2M x 64	None
48MB	(1) 2M x 64	(1) 2M x 64	(1) 2M x 64
56MB	(1) 4M x 64	(1) 2M x 64	(1) 1M x 64
64MB	(1) 8M x 64	None	None
64MB	(1) 4M x 64	(1) 2M x 64	(1) 2M x 64
64MB	(1) 4M x 64	(1) 4M x 64	None

Continued on next page...

ACER, INC.
AX5TC

... continued from previous page

DIMM CONFIGURATION (CON'T)			
Size	Bank 0	Bank 1	Bank 2
72MB	(1) 8M x 64	(1) 1M x 64	None
72MB	(1) 4M x 64	(1) 4M x 64	(1) 1M x 64
80MB	(1) 8M x 64	(1) 1M x 64	(1) 1M x 64
80MB	(1) 8M x 64	(1) 2M x 64	None
80MB	(1) 4M x 64	(1) 4M x 64	(1) 2M x 64
88MB	(1) 8M x 64	(1) 2M x 64	(1) 1M x 64
96MB	(1) 8M x 64	(1) 2M x 64	(1) 2M x 64
96MB	(1) 8M x 64	(1) 4M x 64	None
96MB	(1) 4M x 64	(1) 4M x 64	(1) 4M x 64
104MB	(1) 8M x 64	(1) 4M x 64	(1) 1M x 64
112MB	(1) 8M x 64	(1) 4M x 64	(1) 2M x 64
128MB	(1) 16M x 64	None	None
128MB	(1) 8M x 64	(1) 4M x 64	(1) 4M x 64
128MB	(1) 8M x 64	(1) 8M x 64	None
136MB	(1) 16M x 64	(1) 1M x 64	None
136MB	(1) 8M x 64	(1) 8M x 64	(1) 1M x 64
144MB	(1) 16M x 64	(1) 1M x 64	(1) 1M x 64
144MB	(1) 16M x 64	(1) 2M x 64	None
144MB	(1) 8M x 64	(1) 8M x 64	(1) 2M x 64
152MB	(1) 16M x 64	(1) 2M x 64	(1) 1M x 64
160MB	(1) 16M x 64	(1) 2M x 64	(1) 2M x 64
160MB	(1) 16M x 64	(1) 4M x 64	None
160MB	(1) 8M x 64	(1) 8M x 64	(1) 4M x 64
168MB	(1) 16M x 64	(1) 4M x 64	(1) 1M x 64
176MB	(1) 16M x 64	(1) 4M x 64	(1) 2M x 64
192MB	(1) 16M x 64	(1) 4M x 64	(1) 4M x 64
192MB	(1) 16M x 64	(1) 8M x 64	None
192MB	(1) 8M x 64	(1) 8M x 64	(1) 8M x 64
200MB	(1) 16M x 64	(1) 8M x 64	(1) 1M x 64
208MB	(1) 16M x 64	(1) 8M x 64	(1) 2M x 64
224MB	(1) 16M x 64	(1) 8M x 64	(1) 4M x 64
256MB	(1) 16M x 64	(1) 8M x 64	(1) 8M x 64
Note: Board accepts EDO & SDRAM memory.			

CACHE CONFIGURATION
Note: The location of the cache is unidentified.

Continued on next page...

... continued from previous page

CPU SPEED SELECTION (CX 6X86)								
CPU speed	Clock speed	Multiplier	S1/1	S1/2	S1/3	JP4	JP5	JP6
150MHz	60MHz	2x	On	Off	Off	2 & 3	1 & 2	1 & 2
166MHz	66MHz	2x	On	Off	Off	1 & 2	1 & 2	1 & 2
200MHz	75MHz	2x	On	Off	Off	1 & 2	2 & 3	1 & 2

Note: Pins designated should be in the closed position.

CPU SPEED SELECTION (CX 6X86L)								
CPU speed	Clock speed	Multiplier	S1/1	S1/2	S1/3	JP4	JP5	JP6
150MHz	60MHz	2x	On	Off	Off	2 & 3	1 & 2	1 & 2
166MHz	66MHz	2x	On	Off	Off	1 & 2	1 & 2	1 & 2
200MHz	75MHz	2x	On	Off	Off	1 & 2	2 & 3	1 & 2

Note: Pins designated should be in the closed position.

CPU SPEED SELECTION (CX 6X86MX)								
CPU speed	Clock speed	Multiplier	S1/1	S1/2	S1/3	JP4	JP5	JP6
166MHz	60MHz	2.5x	On	On	Off	2 & 3	1 & 2	1 & 2
200MHz	66MHz	2.5x	On	On	Off	1 & 2	1 & 2	1 & 2
200MHz	75MHz	2x	On	Off	Off	1 & 2	2 & 3	1 & 2
233MHz	66MHz	3x	Off	On	Off	1 & 2	1 & 2	1 & 2
233MHz	83MHz	2x	On	Off	Off	2 & 3	1 & 2	2 & 3
266MHz	66MHz	3.5x	Off	Off	Off	1 & 2	1 & 2	1 & 2

Note: Pins designated should be in the closed position.

CPU SPEED SELECTION (AM K5)								
CPU speed	Clock speed	Multiplier	S1/1	S1/2	S1/3	JP4	JP5	JP6
90MHz	60MHz	1.5x	Off	Off	Off	2 & 3	1 & 2	1 & 2
100MHz	66MHz	1.5x	Off	Off	Off	1 & 2	1 & 2	1 & 2
120MHz	60MHz	1.5x	Off	Off	Off	2 & 3	1 & 2	1 & 2
133MHz	66MHz	1.5x	Off	Off	Off	1 & 2	1 & 2	1 & 2
166MHz	66MHz	1.75x	On	On	Off	1 & 2	1 & 2	1 & 2

Note: Pins designated should be in the closed position.

Continued on next page...

ACER, INC.
AX5TC

... continued from previous page

CPU SPEED SELECTION (AM K6)								
CPU speed	Clock speed	Multiplier	S1/1	S1/2	S1/3	JP4	JP5	JP6
166MHz	66MHz	2.5x	On	On	Off	1 & 2	1 & 2	1 & 2
200MHz	66MHz	3x	Off	On	Off	1 & 2	1 & 2	1 & 2
233MHz	66MHz	3.5x	Off	Off	Off	1 & 2	1 & 2	1 & 2
266MHz	66MHz	4x	On	Off	On	1 & 2	1 & 2	1 & 2
300MHz	66MHz	4.5x	On	On	On	1 & 2	1 & 2	1 & 2

Note: Pins designated should be in the closed position.

CPU SPEED SELECTION (IDT C6)								
CPU speed	Clock speed	Multiplier	S1/1	S1/2	S1/3	JP4	JP5	JP6
150MHz	75MHz	2x	On	Off	Off	1 & 2	2 & 3	1 & 2
180MHz	60MHz	3x	Off	On	Off	2 & 3	1 & 2	1 & 2
200MHz	66MHz	3x	Off	On	Off	1 & 2	1 & 2	1 & 2

Note: Pins designated should be in the closed position.

CPU SPEED SELECTION (INTEL)								
CPU speed	Clock speed	Multiplier	S1/1	S1/2	S1/3	JP4	JP5	JP6
90MHz	60MHz	1.5x	Off	Off	Off	2 & 3	1 & 2	1 & 2
100MHz	66MHz	1.5x	Off	Off	Off	1 & 2	1 & 2	1 & 2
120MHz	60MHz	2x	On	Off	Off	2 & 3	1 & 2	1 & 2
133MHz	66MHz	2x	On	Off	Off	1 & 2	1 & 2	1 & 2
150MHz	60MHz	2.5x	On	On	Off	2 & 3	1 & 2	1 & 2
166MHz	66MHz	2.5x	On	On	Off	1 & 2	1 & 2	1 & 2
200MHz	66MHz	3x	Off	On	Off	1 & 2	1 & 2	1 & 2

Note: Pins designated should be in the closed position.

CPU SPEED SELECTION (INTEL MMX)								
CPU speed	Clock speed	Multiplier	S1/1	S1/2	S1/3	JP4	JP5	JP6
150MHz	60MHz	2.5x	On	On	Off	2 & 3	1 & 2	1 & 2
166MHz	66MHz	2.5x	On	On	Off	1 & 2	1 & 2	1 & 2
200MHz	66MHz	3x	Off	On	Off	1 & 2	1 & 2	1 & 2
233MHz	66MHz	3.5x	Off	Off	Off	1 & 2	1 & 2	1 & 2

Note: Pins designated should be in the closed position.

Continued on next page. . .

... continued from previous page

CPU VOLTAGE SELECTION					
Voltage	S1/4	S1/5	S1/6	S1/7	S1/8
1.30v	Off	Off	Off	Off	On
1.35v	On	Off	Off	Off	On
1.40v	Off	On	Off	Off	On
1.45v	On	On	Off	Off	On
1.50v	Off	Off	On	Off	On
1.55v	On	Off	On	Off	On
1.60v	Off	On	On	Off	On
1.65v	On	On	On	Off	On
1.70v	Off	Off	Off	On	On
1.75v	On	Off	Off	On	On
1.80v	Off	On	Off	On	On
1.85v	On	On	Off	On	On
1.90v	Off	Off	On	On	On
1.95v	On	Off	On	On	On
2.00v	Off	On	On	On	On
2.05v	On	On	On	On	On
2.0v	Off	Off	Off	Off	Off
2.1v	On	Off	Off	Off	Off
2.2v	Off	On	Off	Off	Off
2.3v	On	On	Off	Off	Off
2.4v	Off	Off	On	Off	Off
2.5v	On	Off	On	Off	Off
2.6v	Off	On	On	Off	Off
2.7v	On	On	On	Off	Off
2.8v	Off	Off	Off	On	Off
2.9v	On	Off	Off	On	Off
3.0v	Off	On	Off	On	Off
3.1v	On	On	Off	On	Off
3.2v	Off	Off	On	On	Off
3.3v	On	Off	On	On	Off
3.4v	Off	On	On	On	Off
3.5v	On	On	On	On	Off