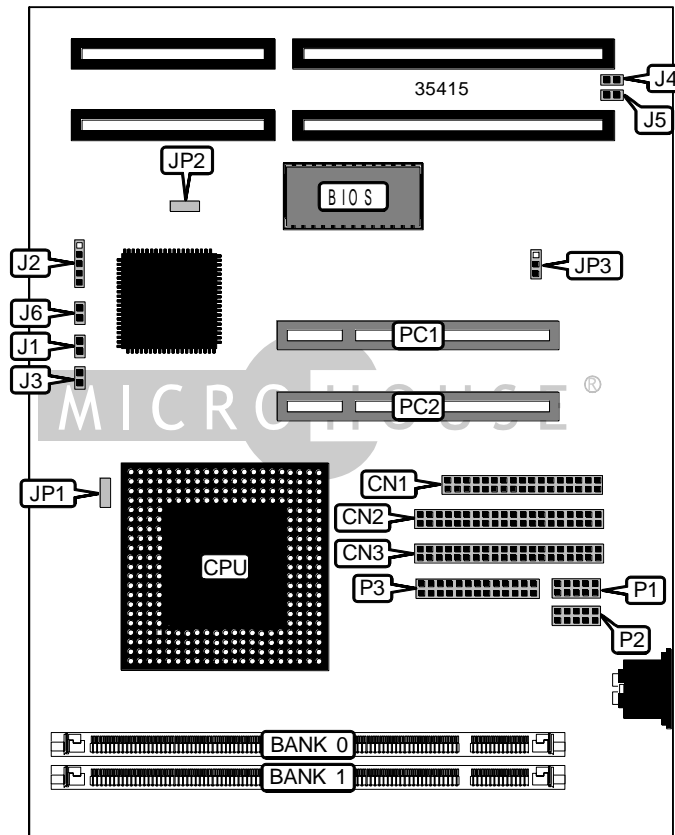


AVT INDUSTRIAL, LTD.
586 GXM-AV

Device Type	Mainboard
Processor	CX GX
Processor Speed	166/180/200/233MHz
Chip Set	Cyrix
Video Chip Set	Unidentified
Maximum Onboard Memory	128MB
Maximum Video Memory	Unidentified
Cache	None
BIOS	Award
Dimensions	220mm x 170mm
I/O Options	32-bit PCI slots (2), floppy drive interface, game interface, green PC connector, IDE interfaces (2), parallel port, PS/2 mouse interface, serial ports (2), VGA interface, USB connector, audio in – CD-ROMs (2)
NPU Options	None



Continued on next page. . .

AVT INDUSTRIAL, LTD.
586 GXM - AV

... continued from previous page

CONNECTIONS			
Purpose	Location	Purpose	Location
Floppy drive interface	CN1	Serial port 1	P1
IDE interface 2	CN2	Serial port 2	P2
IDE interface 1	CN3	Parallel port	P3
Reset switch	J1	Game interface	P4
Power LED & keylock	J2	PS/2 mouse interface	P5
IDE interface LED	J3	VGA interface	P6
Chassis fan power	J4	USB connector	P7
CPU fan power	J5	VGA interface	P8
Green PC connector	J6	Audio connector	P10
Audio in – CD-ROM	J7	32-bit PCI slots	PC1 – PC2

Note: The location of P4 - P10 is unidentified.

USER CONFIGURABLE SETTINGS		
Function	Label	Position
í Factory configured - do not alter	JP1	Unidentified
í Factory configured - do not alter	JP2	Unidentified
í CMOS memory normal operation	JP3	Pins 1 & 2 closed
CMOS memory clear	JP3	Pins 2 & 3 closed

DIMM CONFIGURATION		
Size	Bank 0	Bank 1
8MB	(1) 1M x 64	None
16MB	(1) 2M x 64	None
16MB	(1) 1M x 64	(1) 1M x 64
24MB	(1) 2M x 64	(1) 1M x 64
32MB	(1) 4M x 64	None
32MB	(1) 2M x 64	(1) 2M x 64
40MB	(1) 4M x 64	(1) 1M x 64
48MB	(1) 4M x 64	(1) 2M x 64
64MB	(1) 8M x 64	None
64MB	(1) 4M x 64	(1) 4M x 64
72MB	(1) 8M x 64	(1) 1M x 64
80MB	(1) 8M x 64	(1) 2M x 64
96MB	(1) 8M x 64	(1) 4M x 64
128MB	(1) 8M x 64	(1) 8M x 64