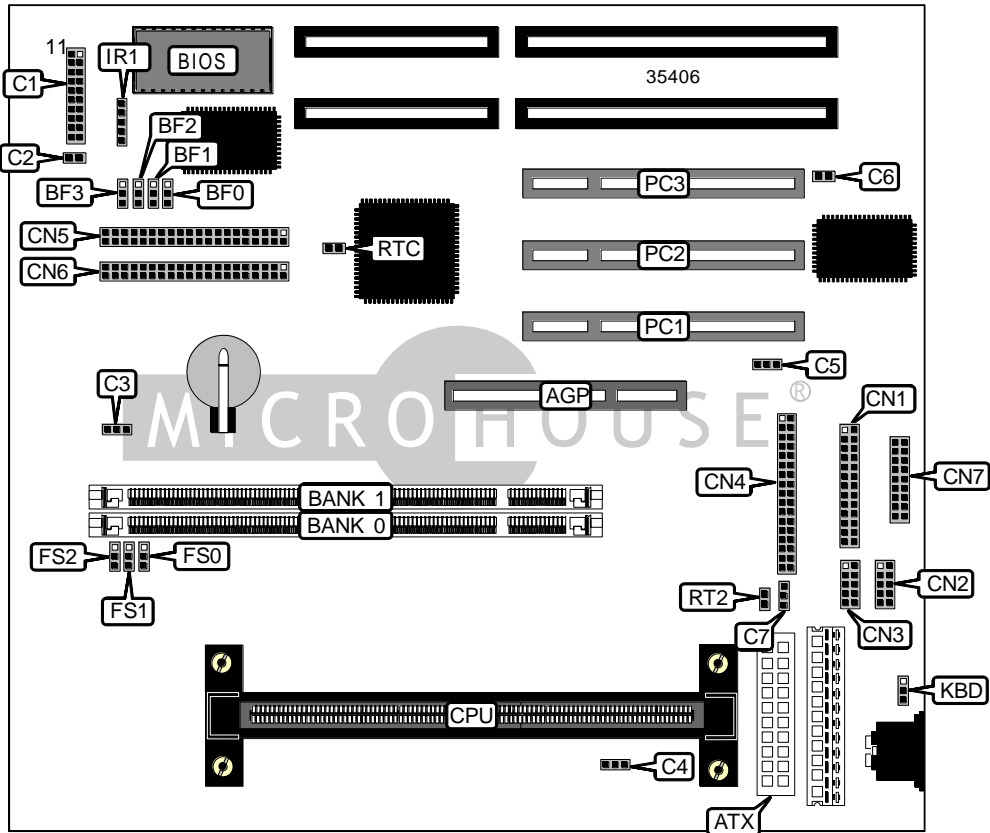


# ASUS COMPUTER INTERNATIONAL

## P2E-B (REV. 1.00)

<b>Device Type</b>	Mainboard
<b>Processor</b>	Pentium II
<b>Processor Speed</b>	233/266/300/333MHz
<b>Chip Set</b>	Intel
<b>Video Chip Set</b>	None
<b>Maximum Onboard Memory</b>	256MB (EDO & SDRAM supported)
<b>Maximum Video Memory</b>	None
<b>Cache</b>	256/512KB (located on Pentium II CPU)
<b>BIOS</b>	Unidentified
<b>Dimensions</b>	254mm x 218mm
<b>I/O Options</b>	32-bit PCI slots (3), floppy drive interface, green PC connector, IDE interfaces (2), parallel port, PS/2 mouse interface, serial ports (2), IR connectors (2), USB connector, ATX power connector, AGP slot
<b>NPU Options</b>	None



Continued on next page . . .

ASUS COMPUTER INTERNATIONAL  
P2E-B (REV. 1.00)

... continued from previous page

CONNECTIONS			
Purpose	Location	Purpose	Location
AGP slot	AGP	Thermal temperature sensor	C6
ATX power connector	ATX	Fan power	C7
Power LED & keylock	C1/pins 1 - 5	Parallel port	CN1
Speaker	C1/pins 7 - 10	Serial port 1	CN2
Message LED	C1/pins 12 & 13	Serial port 2	CN3
Green PC connector	C1/pins 14 & 15	Floppy drive interface	CN4
Soft off power supply	C1/pins 16 & 17	IDE interface 2	CN5
Reset switch	C1/pins 19 & 20	IDE interface 1	CN6
IDE interface LED	C2	Mouse, IR, USB connector	CN7
Chassis fan power	C3	IR connector	IR1
CPU fan power	C4	32-bit PCI slots	PC1 – PC3
Wake on LAN connector	C5	Thermal temperature sensor	RT2

USER CONFIGURABLE SETTINGS		
Function	Label	Position
í Keyboard power disabled	KBD	Pins 1 & 2 closed
Keyboard power enabled	KBD	Pins 2 & 3 closed
í CMOS memory normal operation	RTC	Open
CMOS memory clear	RTC	Closed

DIMM CONFIGURATION		
Size	Bank 0	Bank 1
8MB	(1) 1M x 64	None
16MB	(1) 2M x 64	None
16MB	(1) 1M x 64	(1) 1M x 64
24MB	(1) 2M x 64	(1) 1M x 64
32MB	(1) 4M x 64	None
32MB	(1) 2M x 64	(1) 2M x 64
40MB	(1) 4M x 64	(1) 1M x 64
48MB	(1) 4M x 64	(1) 2M x 64
64MB	(1) 8M x 64	None
64MB	(1) 4M x 64	(1) 4M x 64
72MB	(1) 8M x 64	(1) 1M x 64
80MB	(1) 8M x 64	(1) 2M x 64
96MB	(1) 8M x 64	(1) 4M x 64
128MB	(1) 16M x 64	None

Continued on next page...

ASUS COMPUTER INTERNATIONAL  
P2E-B (REV. 1.00)

... continued from previous page

DIMM CONFIGURATION (CON'T)		
Size	Bank 0	Bank 1
128MB	(1) 8M x 64	(1) 8M x 64
136MB	(1) 16M x 64	(1) 1M x 64
144MB	(1) 16M x 64	(1) 2M x 64
160MB	(1) 16M x 64	(1) 4M x 64
192MB	(1) 16M x 64	(1) 8M x 64
256MB	(1) 16M x 64	(1) 16M x 64

Note: Board accepts EDO & SDRAM memory.

CACHE CONFIGURATION
Note: 256KB/512KB cache is located on the Pentium II CPU.

CPU SPEED SELECTION					
CPU speed	Clock speed	Multiplier	FS0	FS1	FS2
233MHz	66MHz	3.5x	1 & 2	1 & 2	1 & 2
266MHz	66MHz	4x	1 & 2	1 & 2	1 & 2
300MHz	66MHz	4.5x	1 & 2	1 & 2	1 & 2
333MHz	66MHz	5x	1 & 2	1 & 2	1 & 2

Note: Pins designated should be in the closed position.

CPU SPEED SELECTION (CON'T)						
CPU speed	Clock speed	Multiplier	BF0	BF1	BF2	BF3
233MHz	66MHz	3.5x	1 & 2	1 & 2	2 & 3	2 & 3
266MHz	66MHz	4x	2 & 3	2 & 3	1 & 2	2 & 3
300MHz	66MHz	4.5x	1 & 2	2 & 3	1 & 2	2 & 3
333MHz	66MHz	5x	2 & 3	1 & 2	1 & 2	2 & 3

Note: Pins designated should be in the closed position.