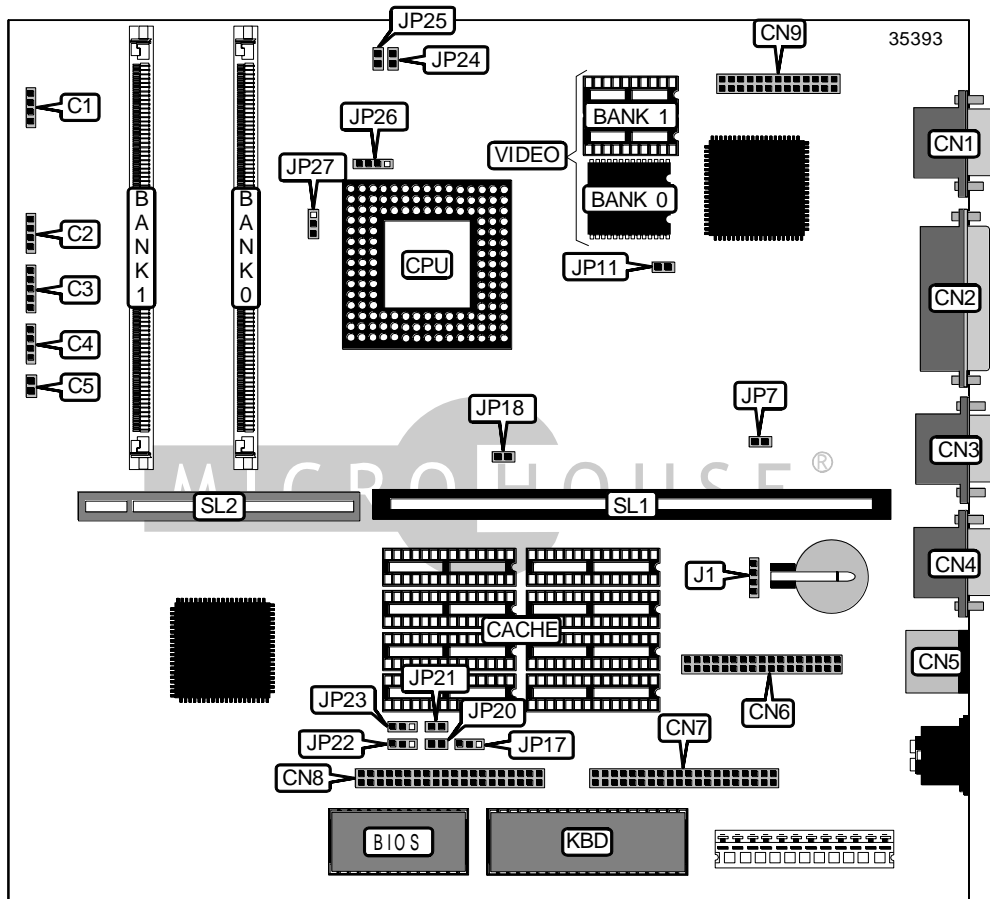


ADVANCED LOGIC RESEARCH, INC. EVOLUTION XP, XV

Device Type	Mainboard
Processor	80486SX/80487SX/80486DX/80486DX2/80486DX4
Processor Speed	25/33/50(internal)/66(internal)/100(internal)MHz
Chip Set	Unidentified
Video Chip Set	Cirrus Logic
Maximum Onboard Memory	128MB
Maximum Video Memory	1MB
Cache	128/256KB
BIOS	Unidentified
Dimensions	254mm x 218mm
I/O Options	32-bit VESA local bus slot, floppy drive interface, IDE interfaces (2), parallel port, PS/2 mouse port, serial ports (2), VGA feature connector, VGA port, riser slot
NPU Options	None



Continued on next page . . .

ADVANCED LOGIC RESEARCH, INC.
EVOLUTION XP, XV

... continued from previous page

CONNECTIONS			
Purpose	Location	Purpose	Location
Chassis fan power	C1	Serial port 1	CN4
IDE interface LED	C2	PS/2 mouse port	CN5
Front panel connector	C3	Floppy drive interface	CN6
Speaker	C4	IDE interface 2	CN7
Reset switch	C5	IDE interface 1	CN8
VGA port	CN1	VGA feature connector	CN9
Parallel port	CN2	Riser slot	SL1
Serial port 2	CN3	32-bit VESA local bus slot	SL2

USER CONFIGURABLE SETTINGS		
Function	Label	Position
CMOS memory	J1	Unidentified
On board video enabled	JP7	Open
On board video disabled	JP7	Closed
Cache type select write through	JP18	Closed
Cache type select write back	JP18	Open
Expansion slot select VL-bus	JP23	Pins 2 & 3 closed
Expansion slot select PCI-bus	JP23	Pins 1 & 2 closed

SIMM CONFIGURATION		
Size	Bank 0	Bank 1
4MB	(1) 1M x 36	None
4MB	(1) 512K x 36	(1) 512K x 36
5MB	(1) 1M x 36	(1) 256K x 36
6MB	(1) 1M x 36	(1) 512K x 36
8MB	(1) 2M x 36	None
8MB	(1) 1M x 36	(1) 1M x 36
9MB	(1) 2M x 36	(1) 256K x 36
10MB	(1) 2M x 36	(1) 512K x 36
12MB	(1) 2M x 36	(1) 1M x 36
16MB	(1) 4M x 36	None
16MB	(1) 2M x 36	(1) 2M x 36
17MB	(1) 4M x 36	(1) 256K x 36
18MB	(1) 4M x 36	(1) 512K x 36
20MB	(1) 4M x 36	(1) 1M x 36
24MB	(1) 4M x 36	(1) 2M x 36

Continued on next page...

ADVANCED LOGIC RESEARCH, INC.
EVOLUTION XP, XV

... continued from previous page

SIMM CONFIGURATION (CON'T)		
Size	Bank 0	Bank 1
32MB	(1) 8M x 36	None
32MB	(1) 4M x 36	(1) 4M x 36
33MB	(1) 8M x 36	(1) 256K x 36
34MB	(1) 8M x 36	(1) 512K x 36
36MB	(1) 8M x 36	(1) 1M x 36
40MB	(1) 8M x 36	(1) 2M x 36
48MB	(1) 8M x 36	(1) 4M x 36
64MB	(1) 8M x 36	(1) 8M x 36
64MB	(1) 16M x 36	None
65MB	(1) 16M x 36	(1) 256K x 36
66MB	(1) 16M x 36	(1) 512K x 36
68MB	(1) 16M x 36	(1) 1M x 36
72MB	(1) 16M x 36	(1) 2M x 36
80MB	(1) 16M x 36	(1) 4M x 36
96MB	(1) 16M x 36	(1) 8M x 36
128MB	(1) 16M x 36	(1) 16M x 36

CACHE CONFIGURATION			
Size	Bank 0	Bank 1	TAG
128KB	(4) 32K x 8	None	Unidentified
256KB	(4) 32K x 8	(4) 32K x 8	Unidentified

CACHE JUMPER CONFIGURATION	
Size	JP17
128KB	Pins 1 & 2 closed
256KB	Pins 2 & 3 closed

CACHE SIZE CONFIGURATION			
Size	JP20	JP21	JP22
8K x 8	Open	Open	Pins 1 & 2 closed
8K x 9	Open	Open	Pins 2 & 3 closed
32K x 8	Closed	Open	Pins 1 & 2 closed
32K x 9	Closed	Closed	Pins 2 & 3 closed

VIDEO MEMORY CONFIGURATION
Note: The size of the video memory chips is unidentified.

Continued on next page. . .

ADVANCED LOGIC RESEARCH, INC.
EVOLUTION XP, XV

... continued from previous page

CPU SPEED SELECTION	
Speed	JP11
25MHz	Open
33MHz	Closed
50iMHz	Open
66iMHz	Closed
100iMHz	Closed

CPU TYPE SELECTION		
Type	JP26	JP27
80486SX	Pins 2 & 3 closed	Open
80487SX	Pins 1 & 2, 3 & 4 closed	Pins 2 & 3 closed
80486DX	Pins 1 & 2, 3 & 4 closed	Pins 1 & 2 closed
80486DX2	Pins 1 & 2, 3 & 4 closed	Pins 1 & 2 closed
80486DX4	Pins 1 & 2, 3 & 4 closed	Pins 1 & 2 closed