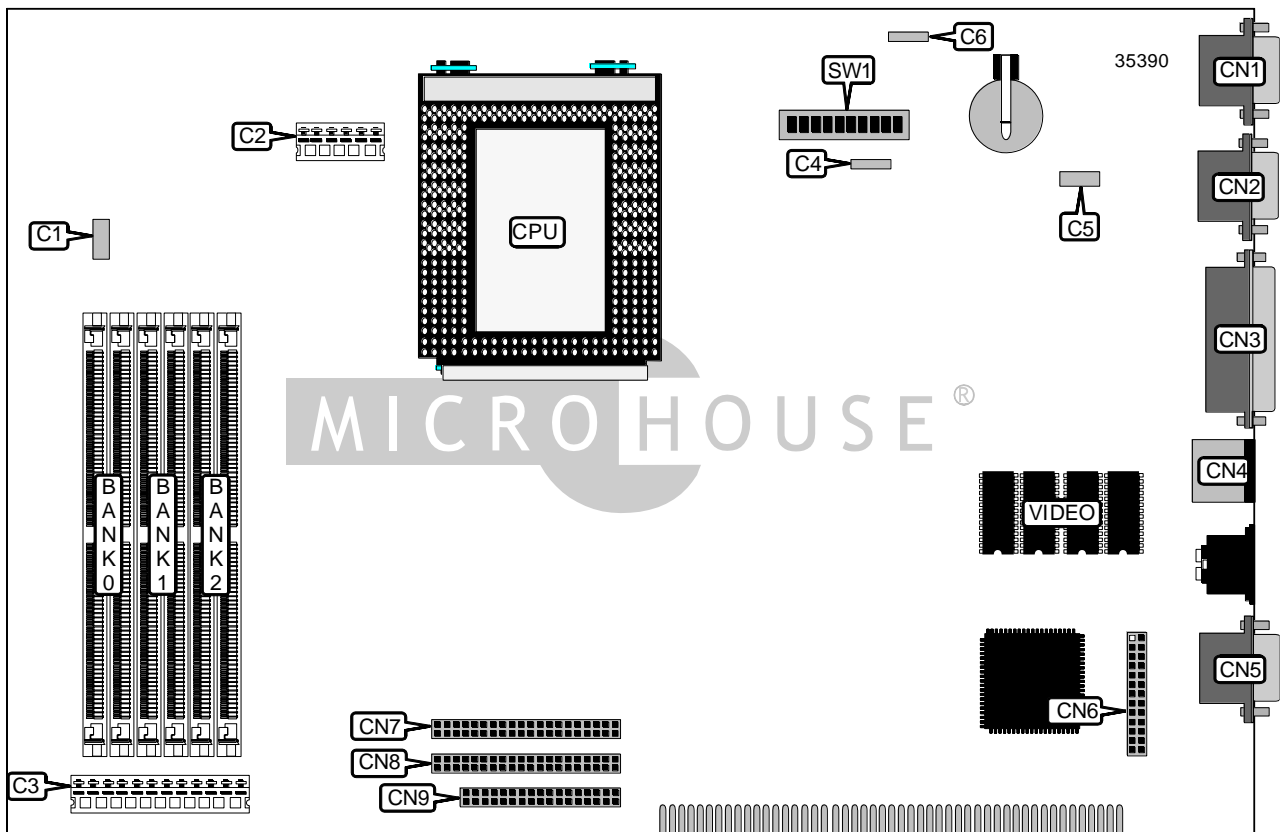


HEWLETT-PACKARD COMPANY

HP VECTRA VA 6/XXX

Device Type	Mainboard
Processor	Pentium Pro
Processor Speed	150/166/180/200/233/266MHz
Chip Set	Intel
Video Chip Set	Cirrus Logic
Maximum Onboard Memory	192MB (EDO supported)
Maximum Video Memory	Unidentified
Cache	256/512KB (located on Pentium Pro CPU)
BIOS	Unidentified
Dimensions	330mm x 218mm
I/O Options	Floppy drive interface, IDE interfaces (2), parallel port, PS/2 mouse port, serial ports (2), VGA feature connector, VGA port
NPU Options	None



Continued on next page...

HEWLETT-PACKARD COMPANY
 HP VECTRA VA 6/XXX

... continued from previous page

CONNECTIONS			
Purpose	Location	Purpose	Location
Control panel connector	C1	Parallel port	CN3
3.3v power	C2	PS/2 mouse port	CN4
5v power	C3	VGA port	CN5
Speaker	C4	VGA feature connector	CN6
External start connector	C5	IDE interface 1	CN7
External battery	C6	IDE interface 2	CN8
Serial port 2	CN1	Floppy drive interface	CN9
Serial port 1	CN2		

USER CONFIGURABLE SETTINGS		
Function	Label	Position
í CMOS memory normal operation	SW1/6	Off
CMOS memory clear	SW1/6	On
í Password normal operation	SW1/7	Off
Password clear	SW1/7	On
í Keyboard power down disabled	SW1/8	Off
Keyboard power down enabled	SW1/8	On
í Normal operation	SW1/9	Off
Clear product ID	SW1/9	On
í Factory configured - do not alter	SW1/10	Off

SIMM CONFIGURATION			
Size	Bank 0	Bank 1	Bank 2
16MB	(2) 2M x 36	None	None
24MB	(2) 1M x 36	(2) 1M x 36	(2) 1M x 36
32MB	(2) 2M x 36	(2) 2M x 36	None
32MB	(2) 4M x 36	None	None
48MB	(2) 2M x 36	(2) 2M x 36	(2) 2M x 36
64MB	(2) 4M x 36	(2) 4M x 36	None
64MB	(2) 8M x 36	None	None
96MB	(2) 4M x 36	(2) 4M x 36	(2) 4M x 36
128MB	(2) 8M x 36	(2) 8M x 36	None
128MB	(2) 16M x 36	None	None
136MB	(2) 16M x 36	(2) 1M x 36	None
144MB	(2) 16M x 36	(2) 1M x 36	(2) 1M x 36
144MB	(2) 16M x 36	(2) 2M x 36	None

Continued on next page...

HEWLETT-PACKARD COMPANY
 HP VECTRA VA 6/XXX

... continued from previous page

SIMM CONFIGURATION (CON'T)			
Size	Bank 0	Bank 1	Bank 2
160MB	(2) 16M x 36	(2) 2M x 36	(2) 2M x 36
160MB	(2) 16M x 36	(2) 4M x 36	None
192MB	(2) 16M x 36	(2) 4M x 36	(2) 4M x 36
192MB	(2) 16M x 36	(2) 8M x 36	None
192MB	(2) 8M x 36	(2) 8M x 36	(2) 8M x 36

Note: Board accepts EDO memory.

CACHE CONFIGURATION
Note: 256KB/512KB cache is located on the Pentium Pro CPU.

VIDEO MEMORY CONFIGURATION
Note: the size of the video memory is unidentified.

CPU SPEED SELECTION							
CPU speed	Clock speed	Multiplier	SW1/1	SW1/2	SW1/3	SW1/4	SW1/5
150MHz	60MHz	2.5x	On	Off	Off	Off	On
166MHz	66MHz	2.5x	Off	Off	Off	Off	On
180MHz	60MHz	3x	On	Off	Off	On	Off
200MHz	66MHz	3x	Off	Off	Off	On	Off
233MHz	66MHz	3.5x	Off	Off	Off	On	On
266MHz	66MHz	4x	Off	Off	On	Off	Off