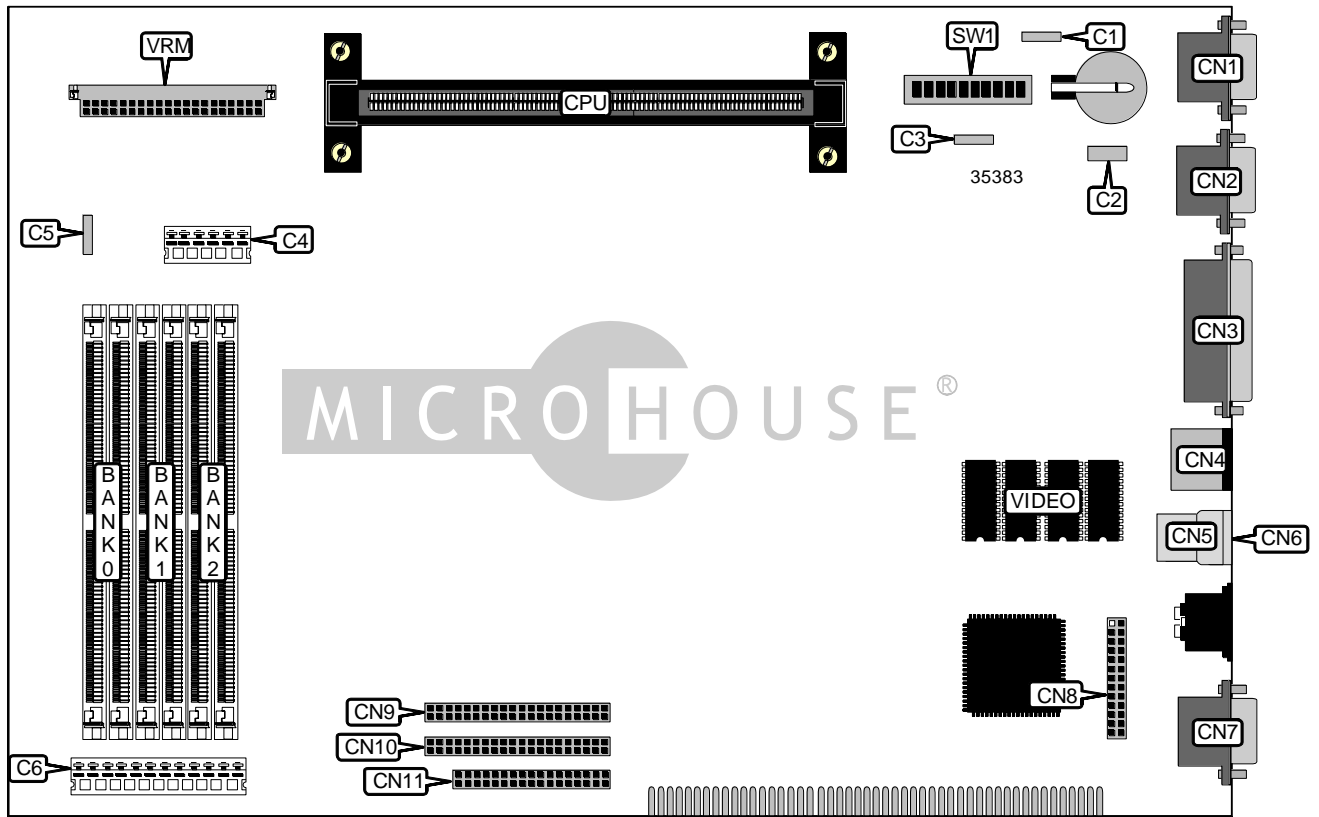


# HEWLETT-PACKARD COMPANY

## HP VECTRA VL6/XXX SERIES 6

<b>Device Type</b>	Mainboard
<b>Processor</b>	Pentium II
<b>Processor Speed</b>	233/266MHz
<b>Chip Set</b>	Intel
<b>Video Chip Set</b>	Unidentified
<b>Maximum Onboard Memory</b>	192MB (EDO supported)
<b>Maximum Video Memory</b>	Unidentified
<b>Cache</b>	256/512KB (located on Pentium II CPU)
<b>BIOS</b>	Unidentified
<b>Dimensions</b>	342mm x 210mm
<b>I/O Options</b>	Floppy drive interface, IDE interfaces (2), parallel port, PS/2 mouse port, serial ports (2), VGA feature connector, VGA port, riser slot, USB connectors (2)
<b>NPU Options</b>	None



Continued on next page...

HEWLETT-PACKARD COMPANY  
 HP VECTRA VL6/XXX SERIES 6

... continued from previous page

CONNECTIONS			
Purpose	Location	Purpose	Location
External battery	C1	PS/2 mouse port	CN4
External start connector	C2	USB connector 1	CN5
Speaker	C3	USB connector 2	CN6
3.3v auxiliary power	C4	VGA port	CN7
Status panel connector	C5	VGA feature connector	CN8
5v power	C6	IDE interface	CN9
Serial port 2	CN1	IDE interface	CN10
Serial port 1	CN2	Floppy drive interface	CN11
Parallel port	CN3	VRM connector	VRM

USER CONFIGURABLE SETTINGS		
Function	Label	Position
í CMOS memory normal operation	SW1/6	Off
CMOS memory clear	SW1/6	On
í Password normal operation	SW1/7	Off
Password clear	SW1/7	On
í Keyboard power down disabled	SW1/8	Off
Keyboard power down enabled	SW1/8	On
í Factory configured - do not alter	SW1/9	Off
í Factory configured - do not alter	SW1/10	Off

SIMM CONFIGURATION			
Size	Bank 0	Bank 1	Bank 2
16MB	(2) 2M x 36	None	None
32MB	(2) 2M x 36	(2) 2M x 36	None
32MB	(2) 4M x 36	None	None
48MB	(2) 2M x 36	(2) 2M x 36	(2) 2M x 36
64MB	(2) 4M x 36	(2) 4M x 36	None
64MB	(2) 8M x 36	None	None
96MB	(2) 4M x 36	(2) 4M x 36	(2) 4M x 36
128MB	(2) 8M x 36	(2) 8M x 36	None
128MB	(2) 16M x 36	None	None
144MB	(2) 16M x 36	(2) 2M x 36	None
160MB	(2) 16M x 36	(2) 2M x 36	(2) 2M x 36
160MB	(2) 16M x 36	(2) 4M x 36	None
192MB	(2) 16M x 36	(2) 4M x 36	(2) 4M x 36
192MB	(2) 16M x 36	(2) 8M x 36	None
192MB	(2) 8M x 36	(2) 8M x 36	(2) 8M x 36

Note: Board accepts EDO memory.

Continued on next page. . .

HEWLETT-PACKARD COMPANY  
HP VECTRA VL6/XXX SERIES 6

... continued from previous page

**CACHE CONFIGURATION**

Note: 256KB/512KB cache is located on the Pentium II CPU.

**VIDEO MEMORY CONFIGURATION**

Note: The size of the video memory is unidentified.

**CPU SPEED SELECTION**

<b>CPU speed</b>	<b>Clock speed</b>	<b>Multiplier</b>	<b>SW1/1</b>	<b>SW1/2</b>	<b>SW1/3</b>	<b>SW1/4</b>	<b>SW1/5</b>
233MHz	66MHz	3.5x	Off	Off	Off	On	On
266MHz	66MHz	4x	Off	Off	On	Off	Off