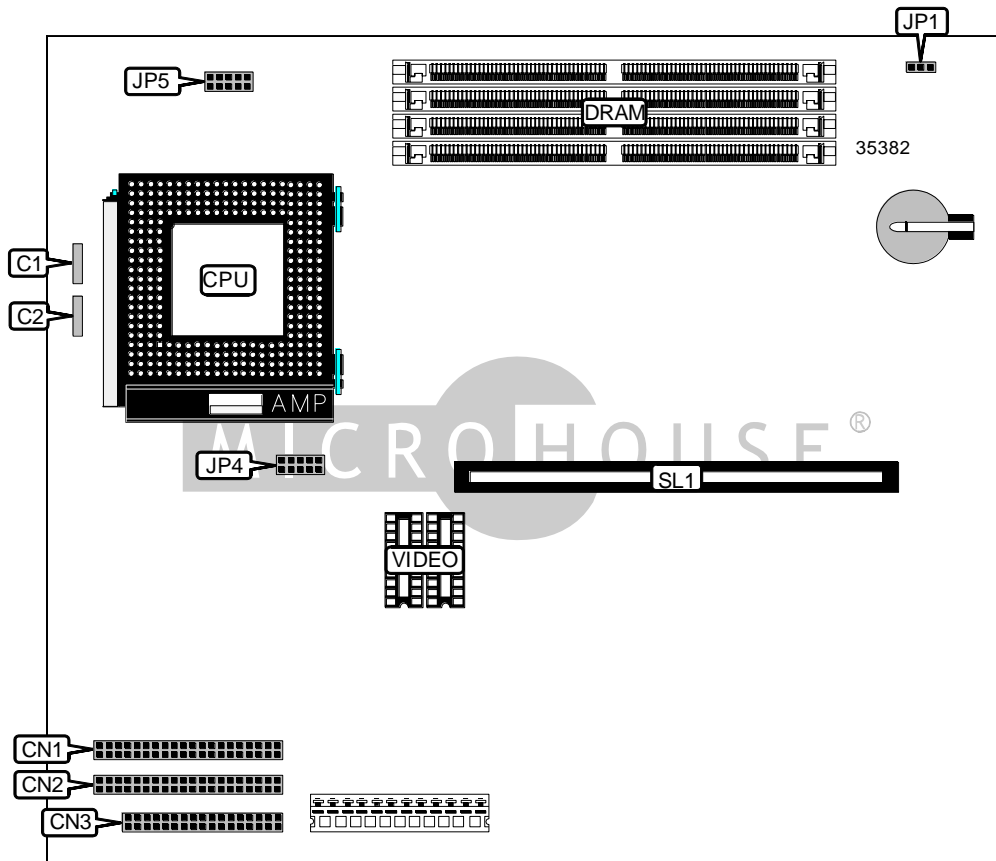


# HEWLETT-PACKARD COMPANY

## HP BRIO 80XX (VER. 2)

<b>Device Type</b>	Mainboard
<b>Processor</b>	AM K6/Pentium/Pentium MMX
<b>Processor Speed</b>	166/200/233MHz
<b>Chip Set</b>	Unidentified
<b>Video Chip Set</b>	Unidentified
<b>Maximum Onboard Memory</b>	128MB (EDO supported)
<b>Maximum Video Memory</b>	2MB
<b>Cache</b>	256KB
<b>BIOS</b>	Unidentified
<b>Dimensions</b>	254mm x 218mm
<b>I/O Options</b>	Floppy drive interface, IDE interfaces (2), riser slot
<b>NPU Options</b>	None



*Continued on next page...*

HEWLETT-PACKARD COMPANY  
HP BRIO 80XX (VER. 2)

... continued from previous page

CONNECTIONS			
Purpose	Location	Purpose	Location
Status panel connector	C1	IDE interface 1	CN2
Chassis fan power	C2	Floppy drive interface	CN3
IDE interface 2	CN1	Riser slot	SL1
Note: The type and location of the rear panel connectors are unidentified.			

USER CONFIGURABLE SETTINGS		
Function	Label	Position
CMOS memory normal operation	JP1	Pins 1 & 2 closed
CMOS memory clear	JP1	Pins 2 & 3 closed

SIMM CONFIGURATION		
Size	Bank 0	Bank 1
8MB	(2) 1M x 36	None
16MB	(2) 2M x 36	None
16MB	(2) 1M x 36	(2) 1M x 36
24MB	(2) 2M x 36	(2) 1M x 36
32MB	(2) 4M x 36	None
32MB	(2) 2M x 36	(2) 2M x 36
40MB	(2) 4M x 36	(2) 1M x 36
48MB	(2) 4M x 36	(2) 2M x 36
64MB	(2) 8M x 36	None
64MB	(2) 4M x 36	(2) 4M x 36
72MB	(2) 8M x 36	(2) 1M x 36
80MB	(2) 8M x 36	(2) 2M x 36
96MB	(2) 8M x 36	(2) 4M x 36
128MB	(2) 8M x 36	(2) 8M x 36
Note: Board accepts EDO memory.		

CACHE CONFIGURATION
Note: 256KB cache is factory installed and is not configurable. The location is unidentified.

VIDEO MEMORY CONFIGURATION		
Size	Bank 0	Bank 1
1MB	(1) 256K x 16	None
2MB	(1) 256K x 16	(1) 256K x 16

Continued on next page. . .

HEWLETT-PACKARD COMPANY  
 HP BRIO 80XX (VER. 2)

... continued from previous page

CPU SPEED SELECTION (AM K6)			
CPU speed	Clock speed	Multiplier	JP5
166MHz	66MHz	2.5x	Pins 3 & 4, 5 & 6 closed
200MHz	66MHz	3x	Pins 5 & 6 closed
233MHz	66MHz	3.5x	Open

CPU SPEED SELECTION (INTEL)			
CPU speed	Clock speed	Multiplier	JP5
166MHz	66MHz	2.5x	Pins 3 & 4, 5 & 6 closed
200MHz	66MHz	3x	Pins 5 & 6 closed

CPU SPEED SELECTION (INTEL MMX)			
CPU speed	Clock speed	Multiplier	JP5
166MHz	66MHz	2.5x	Pins 3 & 4, 5 & 6 closed
200MHz	66MHz	3x	Pins 5 & 6 closed
233MHz	66MHz	3.5x	Open

CPU VOLTAGE SELECTION	
Voltage	JP4
2.14v	Pins 1 & 2 closed
2.84v	Pins 7 & 8 closed
3.54v	Pins 1 & 2, 3 & 4, 5 & 6, 7 & 8 closed