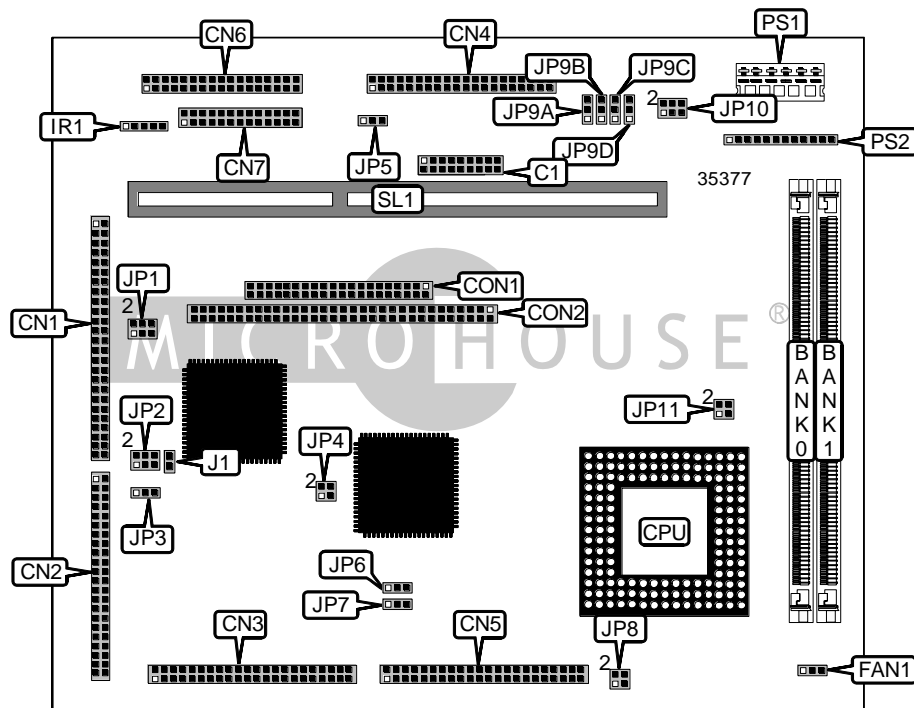


LANNER ELECTRONICS, INC.

EM - 520

| | |
|-------------------------------|---|
| Device Type | Single board computer |
| Processor | Cyrix MediaGX |
| Processor Speed | Unidentified |
| Chip Set | Cyrix |
| Video Chip Set | Cyrix |
| Maximum Onboard Memory | 64MB Unified Memory Architecture (UMA) |
| Maximum Video Memory | None |
| Cache | 512KB |
| BIOS | AMI, Award |
| Dimensions | 203mm x 146mm |
| I/O Options | Floppy drive interface, IDE interface, parallel port, serial ports (4), riser slot, IR connector, USB connectors (2), PC/104 connectors (2), TV output, Ethernet 10Base-T connector, game port, audio in - CD-ROM, microphone in, line in |
| NPU Options | None |



Continued on next page. . .

LANNER ELECTRONICS, INC.
E M - 5 2 0

... continued from previous page

| CONNECTIONS | | | |
|---------------------------------|----------|-------------------|----------|
| Purpose | Location | Purpose | Location |
| Serial port (COM1 - COM4) | CN1 | PC/104 connector | CON1 |
| VGA, TV, LAN, game connector | CN2 | PC/104 connector | CON2 |
| CD, MIC, LINE, keyboard, USB1/2 | CN3 | Chassis fan power | FAN1 |
| IDE interface | CN4 | IR connector | IR1 |
| LCD panel connector | CN5 | Power connector | PS1 |
| Floppy drive interface | CN6 | Power connector | PS2 |
| Parallel port | CN7 | Riser slot | SL1 |

| USER CONFIGURABLE SETTINGS | | |
|-------------------------------------|-------|--------------------------|
| Function | Label | Position |
| í Factory configured - do not alter | J1 | Unidentified |
| í CMOS memory normal operation | JP3 | Pins 1 & 2 closed |
| CMOS memory clear | JP3 | Pins 2 & 3 closed |
| í Factory configured - do not alter | JP4 | Unidentified |
| í Factory configured - do not alter | JP6 | Pins 2 & 3 closed |
| í LCD flat panel voltage select 5v | JP7 | Pins 1 & 2 closed |
| LCD flat panel voltage select 3.3v | JP7 | Pins 2 & 3 closed |
| í Factory configured - do not alter | JP8 | Pins 3 & 4 closed |
| í Factory configured - do not alter | JP11 | Pins 1 & 2, 3 & 4 closed |

| SIMM CONFIGURATION | | |
|--------------------|---------------|---------------|
| Size | Bank 0 | Bank 1 |
| 1MB | (1) 256K x 36 | None |
| 2MB | (1) 512K x 36 | None |
| 2MB | (1) 256K x 36 | (1) 256K x 36 |
| 3MB | (1) 512K x 36 | (1) 256K x 36 |
| 4MB | (1) 1M x 36 | None |
| 4MB | (1) 512K x 36 | (1) 512K x 36 |
| 5MB | (1) 1M x 36 | (1) 256K x 36 |
| 6MB | (1) 1M x 36 | (1) 512K x 36 |
| 8MB | (1) 2M x 36 | None |
| 8MB | (1) 1M x 36 | (1) 1M x 36 |
| 9MB | (1) 2M x 36 | (1) 256K x 36 |
| 10MB | (1) 2M x 36 | (1) 512K x 36 |
| 16MB | (1) 2M x 36 | (1) 2M x 36 |
| 17MB | (1) 4M x 36 | (1) 256K x 36 |

Continued on next page...

LANNER ELECTRONICS, INC.
EM - 520

... continued from previous page

| SIMM CONFIGURATION (CON'T) | | |
|----------------------------|-------------|-------------|
| Size | Bank 0 | Bank 1 |
| 24MB | (1) 4M x 36 | (1) 2M x 36 |
| 32MB | (1) 4M x 36 | (1) 4M x 36 |
| 36MB | (1) 8M x 36 | (1) 1M x 36 |
| 40MB | (1) 8M x 36 | (1) 2M x 36 |
| 64MB | (1) 8M x 36 | (1) 8M x 36 |

| CACHE CONFIGURATION |
|---|
| Note: 512KB cache is factory installed and is not configurable. The location is unidentified. |

| SERIAL PORT 3 SELECTION | |
|-------------------------|-------------------|
| Setting | JP1 |
| í RS-232 | Pins 1 & 2 closed |
| RS-422 | Pins 3 & 4 closed |
| RS-485 | Pins 5 & 6 closed |

| SERIAL PORT 4 SELECTION | |
|-------------------------|-------------------|
| Setting | JP2 |
| í RS-232 | Pins 1 & 2 closed |
| RS-422 | Pins 3 & 4 closed |
| RS-485 | Pins 5 & 6 closed |

| FLASH BIOS ADDRESS SELECTION | |
|------------------------------|-------------------|
| Address | JP10 |
| C800 | Pins 1 & 2 closed |
| D000 | Pins 3 & 4 closed |
| D800 | Pins 5 & 6 closed |

| WATCH DOG TIMER SELECTION | | | | |
|---------------------------|-------------------|-------------------|-------------------|-------------------|
| Seconds | JP9A | JP9B | JP9C | JP9D |
| .5 | Pins 1 & 2 closed | Open | Open | Open |
| 1 | Open | Pins 1 & 2 closed | Open | Open |
| 2 | Open | Open | Pins 1 & 2 closed | Open |
| 4 | Open | Open | Open | Pins 1 & 2 closed |
| 8 | Open | Open | Open | Pins 2 & 3 closed |
| 16 | Open | Open | Pins 2 & 3 closed | Open |
| 32 | Open | Pins 2 & 3 closed | Open | Open |
| 64 | Pins 2 & 3 closed | Open | Open | Open |

Continued on next page. . .

LANNER ELECTRONICS, INC.
EM - 520

... continued from previous page

| WATCH DOG SELECTION | |
|---------------------|-------------------|
| Setting | JP5 |
| í Reset system | Pins 1 & 2 closed |
| NMI system | Pins 2 & 3 closed |
| Disabled | Open |