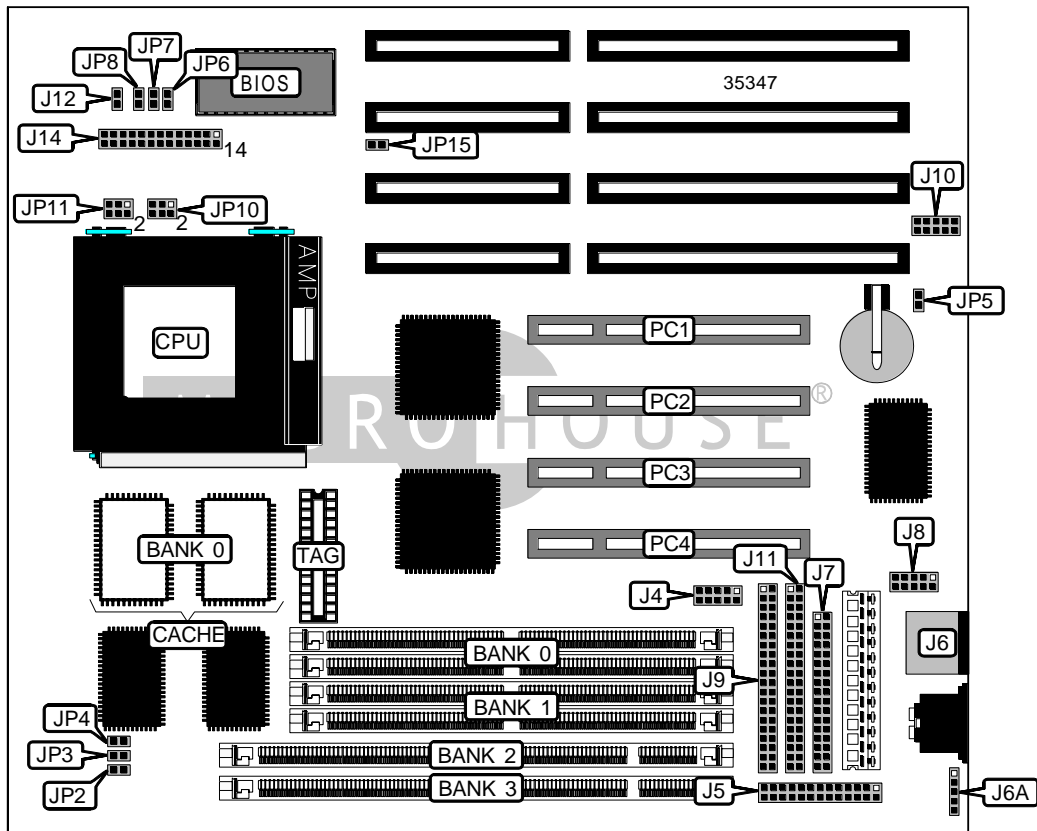


BIOSTAR MICROTECH INTERNATIONAL CORPORATION

MB-8500TVG

Device Type	Mainboard
Processor	CX 6X86/CX 6X86L/CX 686MX/AM K5/AM K6/Pentium/Pentium MMX
Processor Speed	75/90/100/120/133/150/166/180/200/233MHz
Chip Set	Intel
Video Chip Set	None
Maximum Onboard Memory	128MB (EDO & SDRAM supported)
Maximum Video Memory	None
Cache	256/512KB
BIOS	AMI
Dimensions	240mm x 220mm
I/O Options	32-bit PCI slots (4), floppy drive interface, green PC connector, IDE interfaces (2), parallel port, PS/2 mouse port, PS/2 mouse interface, serial ports (2), IR connector, USB connector
NPU Options	None



Continued on next page. . .

BIOSTAR MICROTECH INTERNATIONAL CORPORATION
 MB-8500TVG

... continued from previous page

CONNECTIONS			
Purpose	Location	Purpose	Location
Serial port 2	J4	CPU fan power	J12
Parallel port	J5	Speaker	J14/pins 1 - 4
PS/2 mouse port	J6	Power LED & keylock	J14/pins 5 - 9
PS/2 mouse interface	J6A	Soft off power supply	J14/pins 10 & 11
Floppy drive interface	J7	Reset switch	J14/pins 12 & 13
Serial port 1	J8	Green PC connector	J14/pins 17 & 18
IDE interface 1	J9	IDE interface LED	J14/pins 20 & 21
USB connector	J10	IR connector	J14/pins 22 - 26
IDE interface 2	J11	32-bit PCI slots	PC1 - PC4

USER CONFIGURABLE SETTINGS		
Function	Label	Position
On board battery enabled	JP5/JP15	Closed
On board battery disabled	JP5/JP15	Open
CMOS memory normal operation	JP6	Open
CMOS memory clear	JP6	Closed
Note: JP15 may be used as an alternate to JP5.		

SIMM CONFIGURATION		
Size	Bank 0	Bank 1
8MB	(2) 1M x 36	None
16MB	(2) 2M x 36	None
16MB	(2) 1M x 36	(2) 1M x 36
24MB	(2) 2M x 36	(2) 1M x 36
32MB	(2) 4M x 36	None
32MB	(2) 2M x 36	(2) 2M x 36
40MB	(2) 4M x 36	(2) 1M x 36
48MB	(2) 4M x 36	(2) 2M x 36
64MB	(2) 8M x 36	None
64MB	(2) 4M x 36	(2) 4M x 36
72MB	(2) 8M x 36	(2) 1M x 36
80MB	(2) 8M x 36	(2) 2M x 36
96MB	(2) 8M x 36	(2) 4M x 36
128MB	(2) 8M x 36	(2) 8M x 36
Note: Board accepts EDO memory.		

Continued on next page...

BIOSTAR MICROTECH INTERNATIONAL CORPORATION
MB-8500TVG

... continued from previous page

DIMM CONFIGURATION		
Size	Bank 2	Bank 3
8MB	(1) 1M x 64	None
16MB	(1) 2M x 64	None
16MB	(1) 1M x 64	(1) 1M x 64
24MB	(1) 2M x 64	(1) 1M x 64
32MB	(1) 4M x 64	None
32MB	(1) 2M x 64	(1) 2M x 64
40MB	(1) 4M x 64	(1) 1M x 64
48MB	(1) 4M x 64	(1) 2M x 64
64MB	(1) 8M x 64	None
64MB	(1) 4M x 64	(1) 4M x 64
72MB	(1) 8M x 64	(1) 1M x 64
80MB	(1) 8M x 64	(1) 2M x 64
96MB	(1) 8M x 64	(1) 4M x 64
128MB	(1) 8M x 64	(1) 8M x 64

Note: Board accepts SDRAM memory.

CACHE CONFIGURATION		
Size	Bank 0	TAG
256KB	(2) 32K x 32	Unidentified
512KB	(2) 64K x 32	Unidentified

CPU SPEED SELECTION (CX 6X86)							
CPU speed	Clock speed	Multiplier	JP2	JP3	JP4	JP7	JP8
120MHz	50MHz	2x	Closed	Closed	Closed	Open	Closed
133MHz	55MHz	2x	Closed	Closed	Open	Open	Closed
150MHz	60MHz	2x	Open	Closed	Closed	Open	Closed
166MHz	66MHz	2x	Closed	Open	Closed	Open	Closed
200MHz	75MHz	2x	Open	Closed	Open	Open	Closed

CPU SPEED SELECTION (CX 6X86L)							
CPU speed	Clock speed	Multiplier	JP2	JP3	JP4	JP7	JP8
120MHz	50MHz	2x	Closed	Closed	Closed	Open	Closed
133MHz	55MHz	2x	Closed	Closed	Open	Open	Closed
150MHz	60MHz	2x	Open	Closed	Closed	Open	Closed
166MHz	66MHz	2x	Closed	Open	Closed	Open	Closed
200MHz	75MHz	2x	Open	Closed	Open	Open	Closed

Continued on next page...

BIOSTAR MICROTECH INTERNATIONAL CORPORATION
MB-8500TVG

... continued from previous page

CPU SPEED SELECTION (CX 6X86MX)							
CPU speed	Clock speed	Multiplier	JP2	JP3	JP4	JP7	JP8
150MHz	60MHz	2x	Open	Closed	Closed	Open	Closed
166MHz	66MHz	2x	Closed	Open	Closed	Open	Closed
166MHz	60MHz	2.5x	Open	Closed	Closed	Closed	Closed
200MHz	75MHz	2x	Open	Closed	Open	Open	Closed
200MHz	66MHz	2.5x	Closed	Open	Closed	Closed	Closed
200MHz	60MHz	3x	Open	Closed	Closed	Closed	Open
233MHz	75MHz	2.5x	Open	Closed	Open	Closed	Closed
233MHz	66MHz	3x	Closed	Open	Closed	Closed	Open
266MHz	66MHz	3.5x	Closed	Open	Closed	Open	Open
266MHz	75MHz	3x	Open	Closed	Open	Closed	Open

CPU SPEED SELECTION (AM K5)							
CPU speed	Clock speed	Multiplier	JP2	JP3	JP4	JP7	JP8
75MHz	50MHz	1.5x	Closed	Closed	Closed	Open	Open
90MHz	60MHz	1.5x	Open	Closed	Closed	Open	Open
100MHz	66MHz	1.5x	Closed	Open	Closed	Open	Open
120MHz	60MHz	1.5x	Open	Closed	Closed	Open	Open
133MHz	66MHz	2x	Closed	Open	Closed	Open	Closed
166MHz	66MHz	2.5x	Open	Closed	Closed	Closed	Closed
200MHz	66MHz	3x	Closed	Open	Closed	Closed	Open

CPU SPEED SELECTION (AM K6)							
CPU speed	Clock speed	Multiplier	JP2	JP3	JP4	JP7	JP8
166MHz	66MHz	2.5x	Closed	Open	Closed	Closed	Closed
200MHz	66MHz	3x	Closed	Open	Closed	Closed	Open
233MHz	66MHz	3.5x	Closed	Open	Closed	Open	Open

CPU SPEED SELECTION (INTEL)							
CPU speed	Clock speed	Multiplier	JP2	JP3	JP4	JP7	JP8
75MHz	50MHz	1.5x	Closed	Closed	Closed	Open	Open
90MHz	60MHz	1.5x	Open	Closed	Closed	Open	Open
100MHz	66MHz	1.5x	Closed	Open	Closed	Open	Open
120MHz	60MHz	2x	Open	Closed	Closed	Open	Closed
133MHz	66MHz	2x	Closed	Open	Closed	Open	Closed
150MHz	60MHz	2.5x	Open	Closed	Closed	Closed	Closed
166MHz	66MHz	2.5x	Closed	Open	Closed	Closed	Closed
180MHz	60MHz	3x	Open	Closed	Closed	Closed	Open
200MHz	66MHz	3x	Closed	Open	Closed	Closed	Open

Continued on next page. . .

BIOSTAR MICROTECH INTERNATIONAL CORPORATION
 MB-8500TVG

... continued from previous page

CPU SPEED SELECTION (INTEL MMX)							
CPU speed	Clock speed	Multiplier	JP2	JP3	JP4	JP7	JP8
166MHz	66MHz	2.5x	Closed	Open	Closed	Closed	Closed
200MHz	66MHz	3x	Closed	Open	Closed	Closed	Open
233MHz	66MHz	3.5x	Closed	Open	Closed	Open	Open

CPU VOLTAGE SELECTION (SINGLE)		
Voltage	JP10	JP11
3.5v	Pins 5 & 6 closed	Pins 1 & 2, 3 & 4, 5 & 6 closed

CPU VOLTAGE SELECTION (DUAL)			
Voltage	V core	JP10	JP11
3.4v	2.8v	Open	Open
3.4v	2.9v	Pins 1 & 2 closed	Open
3.4v	3.2v	Pins 3 & 4 closed	Open