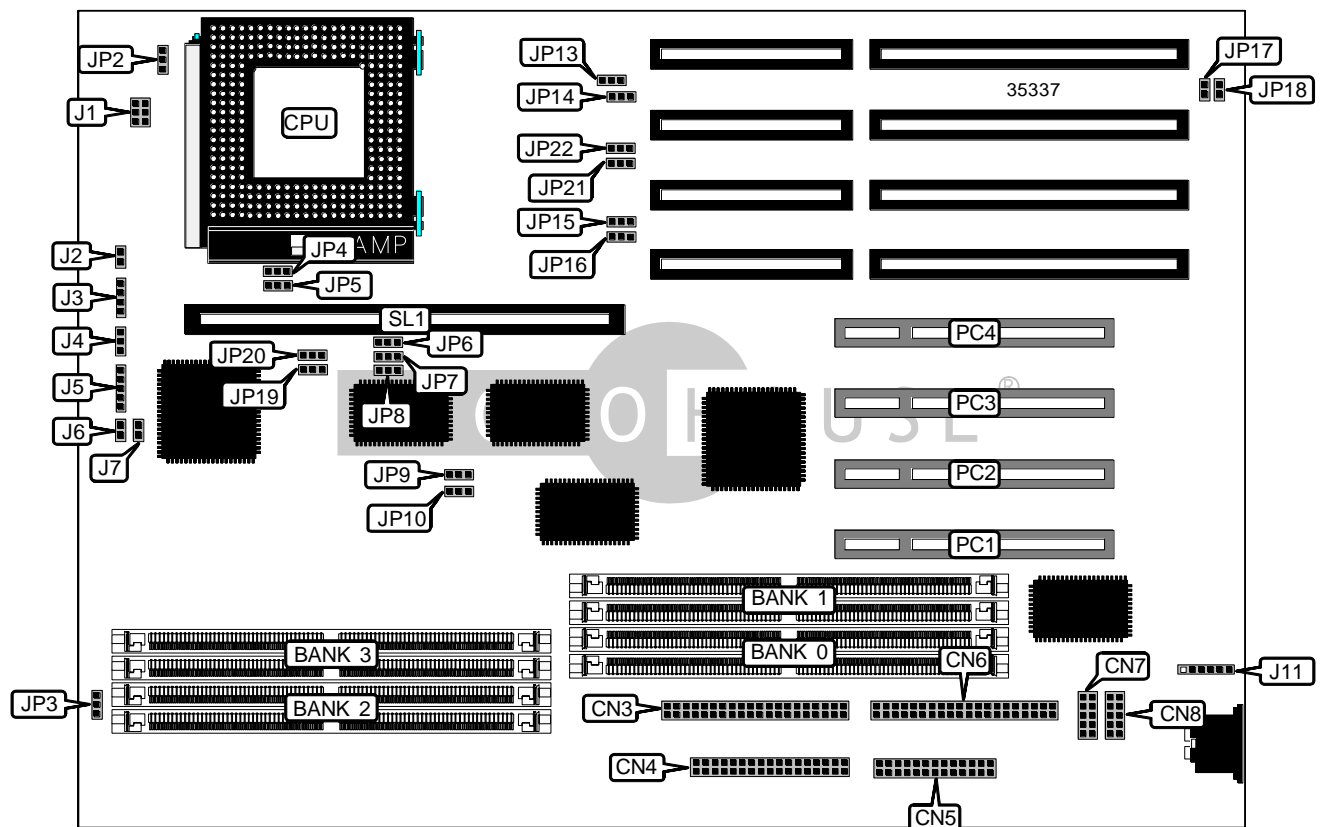


DIAMOND FLOWER, INC. G586VPM (REV. A)

Device Type	Mainboard
Processor	Pentium
Processor Speed	75/90/100/120/133MHz
Chip Set	VLSI
Video Chip Set	None
Maximum Onboard Memory	256MB
Maximum Video Memory	None
Cache	256/512/1024KB
BIOS	Award
Dimensions	330mm x 220mm
I/O Options	32-bit PCI slots (4), floppy drive interface, IDE interfaces (2), parallel port, PS/2 mouse interface, serial ports (2), cache slot
NPU Options	None



Continued on next page...

DIAMOND FLOWER, INC.
G586VPM (REV. A)

... continued from previous page

CONNECTIONS			
Purpose	Location	Purpose	Location
IDE interface 1	CN3	Turbo switch	J4
Floppy drive interface	CN4	Power LED & keylock	J5
Parallel port	CN5	IDE interface LED	J6
IDE interface 2	CN6	Disk active LED	J7
Serial port 2	CN7	PS/2 mouse interface	J11
Serial port 1	CN8	32-bit PCI slots	PC1 – PC4
Reset switch	J2	Cache slot	SL1
Speaker	J3		

USER CONFIGURABLE SETTINGS		
Function	Label	Position
í Factory configured - do not alter	J8	Open
í Factory configured - do not alter	JP2	Pins 2 & 3 closed
í Factory configured - do not alter	JP3	Pins 2 & 3 closed
í Factory configured - do not alter	JP4	Pins 1 & 2 closed
í Factory configured - do not alter	JP5	Pins 1 & 2 closed
í PCI IDE enabled	JP9	Closed
PCI IDE disabled	JP9	Open
í Factory configured - do not alter	JP10	Open
í Factory configured - do not alter	JP14	Pins 1 & 2 closed
í Factory configured - do not alter	JP15	Pins 1 & 2 closed
í Factory configured - do not alter	JP16	Pins 2 & 3 closed
í Monitor type select color	JP17	Closed
Monitor type select monochrome	JP17	Open
í PS/2 mouse IRQ12 enabled	JP18	Closed
PS/2 mouse IRQ12 disabled	JP18	Open
í Factory configured - do not alter	JP21	Open
í Factory configured - do not alter	JP22	Open
Note: The location of J8 is unidentified.		

Continued on next page...

DIAMOND FLOWER, INC.
G586VPM (REV. A)

... continued from previous page

SIMM CONFIGURATION				
Size	Bank 0	Bank 1	Bank 2	Bank 3
2MB	(2) 256K x 36	None	None	None
4MB	(2) 512K x 36	None	None	None
4MB	(2) 256K x 36	(2) 256K x 36	None	None
6MB	(2) 256K x 36	(2) 256K x 36	(2) 256K x 36	None
8MB	(2) 1M x 36	None	None	None
8MB	(2) 256K x 36	(2) 256K x 36	(2) 256K x 36	(2) 256K x 36
8MB	(2) 512K x 36	(2) 512K x 36	None	None
12MB	(2) 512K x 36	(2) 512K x 36	(2) 512K x 36	None
16MB	(2) 2M x 36	None	None	None
16MB	(2) 1M x 36	(2) 1M x 36	None	None
16MB	(2) 512K x 36	(2) 512K x 36	(2) 512K x 36	(2) 512K x 36
24MB	(2) 2M x 36	(2) 1M x 36	None	None
24MB	(2) 1M x 36	(2) 1M x 36	(2) 1M x 36	None
32MB	(2) 4M x 36	None	None	None
32MB	(2) 2M x 36	(2) 2M x 36	None	None
32MB	(2) 1M x 36	(2) 1M x 36	(2) 1M x 36	(2) 1M x 36
40MB	(2) 4M x 36	(2) 1M x 36	None	None
48MB	(2) 4M x 36	(2) 2M x 36	None	None
48MB	(2) 2M x 36	(2) 2M x 36	(2) 2M x 36	None
64MB	(2) 2M x 36	(2) 2M x 36	(2) 2M x 36	(2) 2M x 36
64MB	(2) 8M x 36	None	None	None
64MB	(2) 4M x 36	(2) 4M x 36	None	None
72MB	(2) 8M x 36	(2) 1M x 36	None	None
80MB	(2) 8M x 36	(2) 2M x 36	None	None
96MB	(2) 8M x 36	(2) 4M x 36	None	None
96MB	(2) 4M x 36	(2) 4M x 36	(2) 4M x 36	None
128MB	(2) 8M x 36	(2) 8M x 36	None	None
128MB	(2) 4M x 36	(2) 4M x 36	(2) 4M x 36	(2) 4M x 36
192MB	(2) 8M x 36	(2) 8M x 36	(2) 8M x 36	None
256MB	(2) 8M x 36	(2) 8M x 36	(2) 8M x 36	(2) 8M x 36

CACHE CONFIGURATION		
Size	SL1	TAG
256KB	256KB module installed	Unidentified
512KB	512KB module installed	Unidentified
1MB	1MB module installed	Unidentified

Note: The location of the TAG is unidentified.

Continued on next page...

DIAMOND FLOWER, INC.
G586VPM (REV. A)

... continued from previous page

CACHE JUMPER CONFIGURATION					
Size	JP6	JP7	JP8	JP19	JP20
256KB (A)	1 & 2	1 & 2	1 & 2	1 & 2	1 & 2
512KB (A)	2 & 3	1 & 2	2 & 3	2 & 3	1 & 2
512KB (B)	2 & 3	2 & 3	2 & 3	2 & 3	1 & 2
1MB (B)	2 & 3	1 & 2	2 & 3	2 & 3	2 & 3

Note: Pins designated should be in the closed position. (A) = 32-byte line size. (B) = 64-byte line size.

CPU SPEED SELECTION				
CPU speed	Clock speed	Multiplier	J1	JP13
75MHz	50MHz	1.5x	1 & 2	2 & 3
90MHz	60MHz	1.5x	1 & 2, 5 & 6	2 & 3
100MHz	66MHz	1.5x	1 & 2, 3 & 4, 5 & 6	2 & 3
100MHz	50MHz	2x	1 & 2	1 & 2
120MHz	60MHz	2x	1 & 2, 5 & 6	1 & 2
133MHz	66MHz	2x	1 & 2, 3 & 4, 5 & 6	1 & 2

Note: Pins designated should be in the closed position.