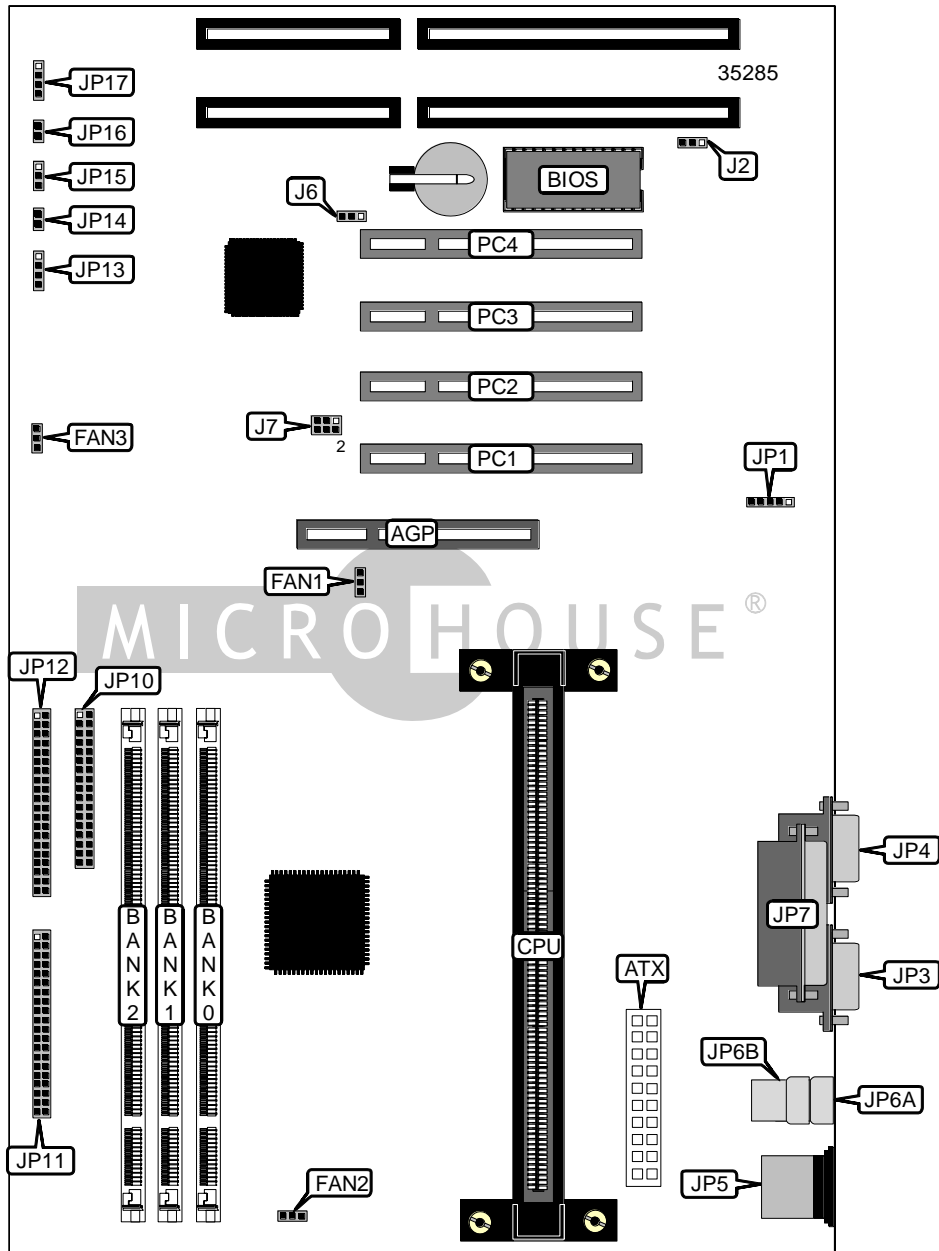


DTK COMPUTER, INC.

PRM-00761 (VER. 3.00)

Device Type	Mainboard
Processor	Pentium II
Processor Speed	233/266/300/333MHz
Chip Set	Intel 440LX
Maximum Onboard Memory	768MB (EDO & SDRAM supported)
Cache	512KB (located on the Pentium II CPU)
BIOS	Award
I/O Options	32-bit PCI slots (4), floppy drive interface, IDE interface (2), parallel port, PS/2 mouse port, serial ports (2), USB connectors (2), IR connector, AGP slot, ATX power connector
Dimensions	305mm x 180mm



Continued on next page . . .

... continued from previous page

CONNECTIONS			
Purpose	Location	Purpose	Location
AGP slot	AGP	Parallel port	JP7
ATX power connector	ATX	Floppy drive interface	JP10
CPU fan power	FAN1	IDE interface 2	JP11
System fan power	FAN2	IDE interface 1	JP12
System fan power	FAN3	IDE interface LED	JP13
IR connector	JP1	Power switch	JP14
Serial port 1	JP3	Power LED	JP15
Serial port 2	JP4	Reset switch	JP16
PS/2 mouse port	JP5	Speaker	JP17
USB connector 1	JP6A	32-bit PCI slots	PC1 - PC4
USB connector 2	JP6B		

USER CONFIGURABLE SETTINGS		
Function	Label	Position
Flash BIOS voltage select 12v	J2	Pins 2 & 3 closed
Flash BIOS voltage select 5v	J2	Pins 1 & 2 closed
í CMOS memory normal operation	J6	Pins 1 & 2 closed
CMOS memory clear	J6	Pins 2 & 3 closed

DRAM CONFIGURATION			
Size	Bank 0	Bank 1	Bank 2
8MB	(1) 1MB x 64	None	None
16MB	(1) 1MB x 64	(1) 1MB x 64	None
16MB	(1) 2MB x 64	None	None
24MB	(1) 1MB x 64	(1) 1MB x 64	(1) 1MB x 64
24MB	(1) 2MB x 64	(1) 1MB x 64	None
32MB	(1) 2MB x 64	(1) 2MB x 64	None
32MB	(1) 4MB x 64	None	None
40MB	(1) 2MB x 64	(1) 2MB x 64	(1) 1MB x 64
40MB	(1) 4MB x 64	(1) 1MB x 64	None
48MB	(1) 2MB x 64	(1) 2MB x 64	(1) 2MB x 64
48MB	(1) 4MB x 64	(1) 2MB x 64	None
64MB	(1) 4MB x 64	(1) 4MB x 64	None
64MB	(1) 8MB x 64	None	None
72MB	(1) 4MB x 64	(1) 4MB x 64	(1) 1MB x 64
72MB	(1) 8MB x 64	(1) 1MB x 64	None
80MB	(1) 4MB x 64	(1) 4MB x 64	(1) 2MB x 64
80MB	(1) 8MB x 64	(1) 2MB x 64	None
96MB	(1) 4MB x 64	(1) 4MB x 64	(1) 4MB x 64
96MB	(1) 8MB x 64	(1) 4MB x 64	None
128MB	(1) 8MB x 64	(1) 8MB x 64	None
128MB	(1) 16MB x 64	None	None

Continued on next page. . .

... continued from previous page

DRAM CONFIGURATION (CONT.)			
Size	Bank 0	Bank 1	Bank 2
136MB	(1) 8MB x 64	(1) 8MB x 64	(1) 1MB x 64
136MB	(1) 16MB x 64	(1) 1MB x 64	None
144MB	(1) 8MB x 64	(1) 8MB x 64	(1) 2MB x 64
144MB	(1) 16MB x 64	(1) 2MB x 64	None
160MB	(1) 8MB x 64	(1) 8MB x 64	(1) 4MB x 64
160MB	(1) 16MB x 64	(1) 4MB x 64	None
192MB	(1) 8MB x 64	(1) 8MB x 64	(1) 8MBx 64
192MB	(1) 16MB x 64	(1) 8MB x 64	None
256MB	(1) 16MB x 64	(1) 16MB x 64	None
256MB	(1) 32MB x 64	None	None
264MB	(1) 16MB x 64	(1) 16MB x 64	(1) 1MB x 64
272MB	(1) 16MB x 64	(1) 16MB x 64	(1) 2MB x 64
288MB	(1) 16MB x 64	(1) 16MB x 64	(1) 4MB x 64
320MB	(1) 16MB x 64	(1) 16MB x 64	(1) 8MB x 64
384MB	(1) 16MB x 64	(1) 16MB x 64	(1) 16MB x 64
384MB	(1) 32MB x 64	(1) 16MB x 64	None
512MB	(1) 32MB x 64	(1) 32MB x 64	None
768MB	(1) 32MB x 64	(1) 32MB x 64	(1) 32MB x 64

Note: Board accepts EDO and SDRAM. Maximum EDO is 768MB. Maximum SDRAM is 384MB.

CPU SPEED SELECTION			
Speed	Clock speed	Multiplier	J7
233MHz	66MHz	3.5x	Pins 5 & 6 closed
266MHz	66MHz	4x	Pins 1 & 2, 3 & 4 closed
300MHz	66MHz	4.5x	Pins 3 & 4 closed
333MHz	66MHz	5x	Pins 1 & 2 closed