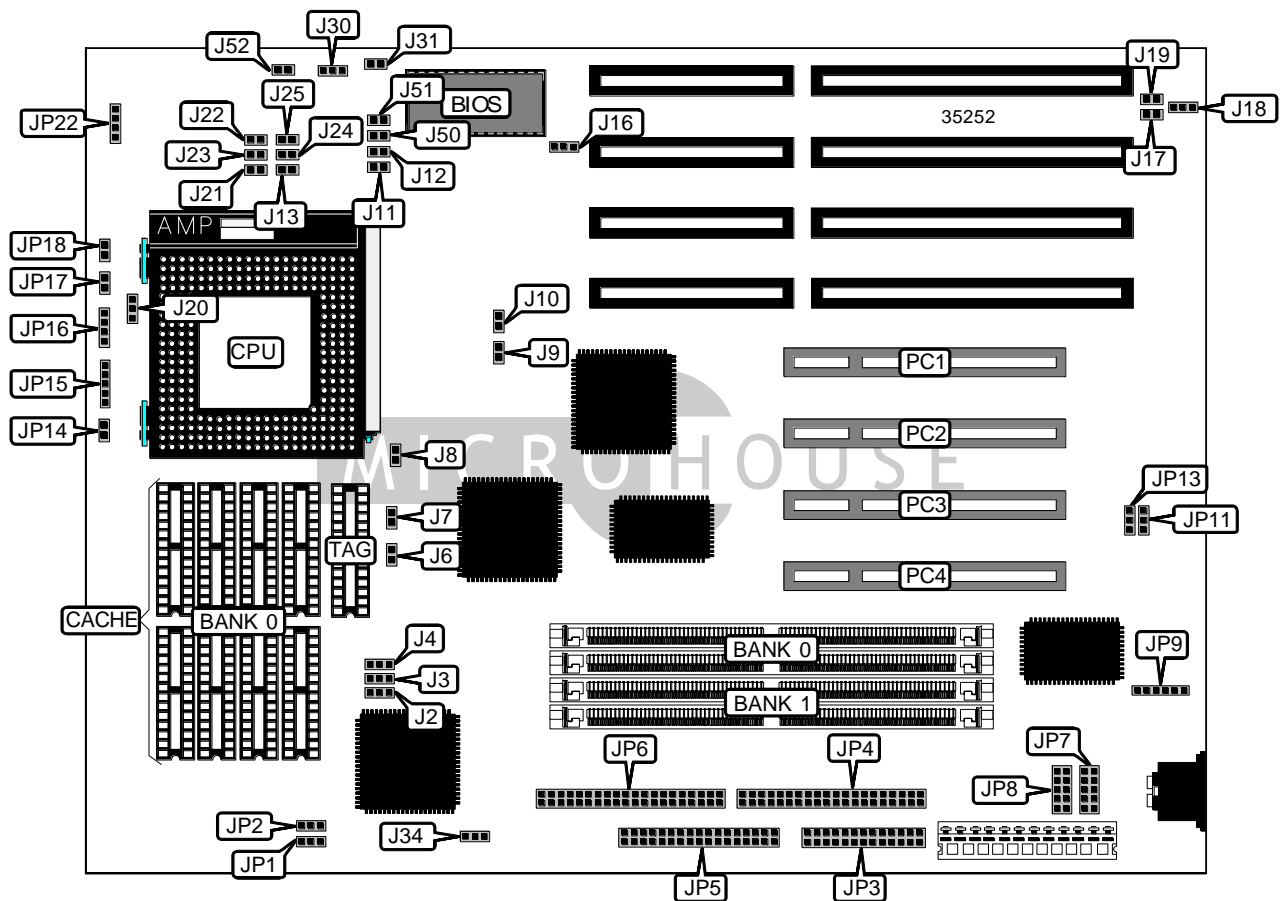


DIAMOND FLOWER, INC.  
G5860PB (REV. 0+)

<b>Device Type</b>	Mainboard
<b>Processor</b>	Pentium
<b>Processor Speed</b>	75/90/100/120/133/150MHz
<b>Chip Set</b>	OPTI
<b>Video Chip Set</b>	None
<b>Maximum Onboard Memory</b>	128MB
<b>Maximum Video Memory</b>	None
<b>Cache</b>	256/512/1024KB
<b>BIOS</b>	Award
<b>Dimensions</b>	330mm x 220mm
<b>I/O Options</b>	32-bit PCI slots (4), floppy drive interface, IDE interfaces (2), parallel port, PS/2 mouse interface, serial ports (2)
<b>NPU Options</b>	None



Continued on next page . . .

DIAMOND FLOWER, INC.  
G5860PB (REV. 0+)

... continued from previous page

CONNECTIONS			
Purpose	Location	Purpose	Location
Parallel port	JP3	IDE interface LED	JP14
IDE interface 2	JP4	Power LED & LED	JP15
Floppy drive interface	JP5	Speaker	JP16
IDE interface 1	JP6	Reset switch	JP17
Serial port 1	JP7	Green LED	JP18
Serial port 2	JP8	CPU fan power	JP22
PS/2 mouse interface	JP9	32-bit PCI slots	PC1 – PC4

USER CONFIGURABLE SETTINGS		
Function	Label	Position
í Factory configured - do not alter	J2	Pins 2 & 3 closed
í Factory configured - do not alter	J3	Pins 2 & 3 closed
í Factory configured - do not alter	J4	Pins 2 & 3 closed
í Factory configured - do not alter	J8	Unidentified
í Factory configured - do not alter	J11	Open
í Factory configured - do not alter	J12	Open
í Flash BIOS voltage select 5v	J16	Pins 1 & 2 closed
Flash BIOS voltage select 12v	J16	Pins 2 & 3 closed
í PS/2 mouse IRQ12 enabled	J17	Closed
PS/2 mouse IRQ12 disabled	J17	Open
í Monitor type select color	J18	Pins 2 & 3 closed
Monitor type select monochrome	J18	Pins 1 & 2 closed
í Factory configured - do not alter	J19	Open
í Factory configured - do not alter	J20	Pins 2 & 3 closed
í Factory configured - do not alter	J21	Closed
í Factory configured - do not alter	J22	Closed
í Factory configured - do not alter	J23	Closed
í Factory configured - do not alter	J24	Closed
í Factory configured - do not alter	J25	Closed
í Factory configured - do not alter	J30	Pins 2 & 3 closed
í Factory configured - do not alter	J31	Closed
í Factory configured - do not alter	J34	Pins 2 & 3 closed
í Factory configured - do not alter	J50	Closed
í Factory configured - do not alter	J51	Closed
í Factory configured - do not alter	J52	Open

Continued on next page. . .

DIAMOND FLOWER, INC.  
G5860PB (REV. 0+)

... continued from previous page

SIMM CONFIGURATION		
Size	Bank 0	Bank 1
2MB	(2) 256K x 36	None
4MB	(2) 512K x 36	None
4MB	(2) 256K x 36	(2) 256K x 36
6MB	(2) 512K x 36	(2) 256K x 36
8MB	(2) 1M x 36	None
8MB	(2) 512K x 36	(2) 512K x 36
10MB	(2) 1M x 36	(2) 256K x 36
12MB	(2) 512K x 36	(2) 1M x 36
16MB	(2) 2M x 36	None
16MB	(2) 1M x 36	(2) 1M x 36
18MB	(2) 2M x 36	(2) 256K x 36
20MB	(2) 512K x 36	(2) 2M x 36
24MB	(2) 2M x 36	(2) 1M x 36
32MB	(2) 4M x 36	None
32MB	(2) 2M x 36	(2) 2M x 36
34MB	(2) 4M x 36	(2) 256K x 36
36MB	(2) 512K x 36	(2) 4M x 36
40MB	(2) 4M x 36	(2) 1M x 36
48MB	(2) 2M x 36	(2) 4M x 36
64MB	(2) 8M x 36	None
64MB	(2) 4M x 36	(2) 4M x 36
66MB	(2) 8M x 36	(2) 256K x 36
68MB	(2) 512K x 36	(2) 8M x 36
72MB	(2) 8M x 36	(2) 1M x 36
80MB	(2) 2M x 36	(2) 8M x 36
96MB	(2) 8M x 36	(2) 4M x 36
128MB	(2) 8M x 36	(2) 8M x 36

CACHE CONFIGURATION		
Size	Bank 0	TAG
256KB	(8) 32K x 8	(1) 32K x 8
512KB	(8) 64K x 8	(1) 32K x 8
1MB	(8) 128K x 8	(1) 32K x 8

CACHE JUMPER CONFIGURATION		
Size	J6	J7
256KB	Open	Open
512KB	Open	Closed
1MB	Closed	Closed

Continued on next page. . .

DIAMOND FLOWER, INC.  
G5860PB (REV. 0+)

... continued from previous page

CACHE VOLTAGE SELECTION		
Voltage	JP1	JP2
3.3v	Pins 1 & 2 closed	Pins 1 & 2 closed
í Mixed voltage	Pins 2 & 3 closed	Pins 2 & 3 closed

CPU SPEED SELECTION					
CPU speed	Clock speed	Multiplier	J9	J10	J13
75MHz	50MHz	1.5x	Open	Open	Open
90MHz	60MHz	1.5x	Closed	Closed	Open
100MHz	66MHz	1.5x	Open	Closed	Open
100MHz	50MHz	2x	Open	Open	Closed
120MHz	60MHz	2x	Closed	Closed	Closed
133MHz	66MHz	2x	Open	Closed	Closed

DMA CHANNEL SELECTION		
Channel	JP11	JP13
í 1	Pins 2 & 3 closed	Pins 2 & 3 closed
3	Pins 1 & 2 closed	Pins 1 & 2 closed