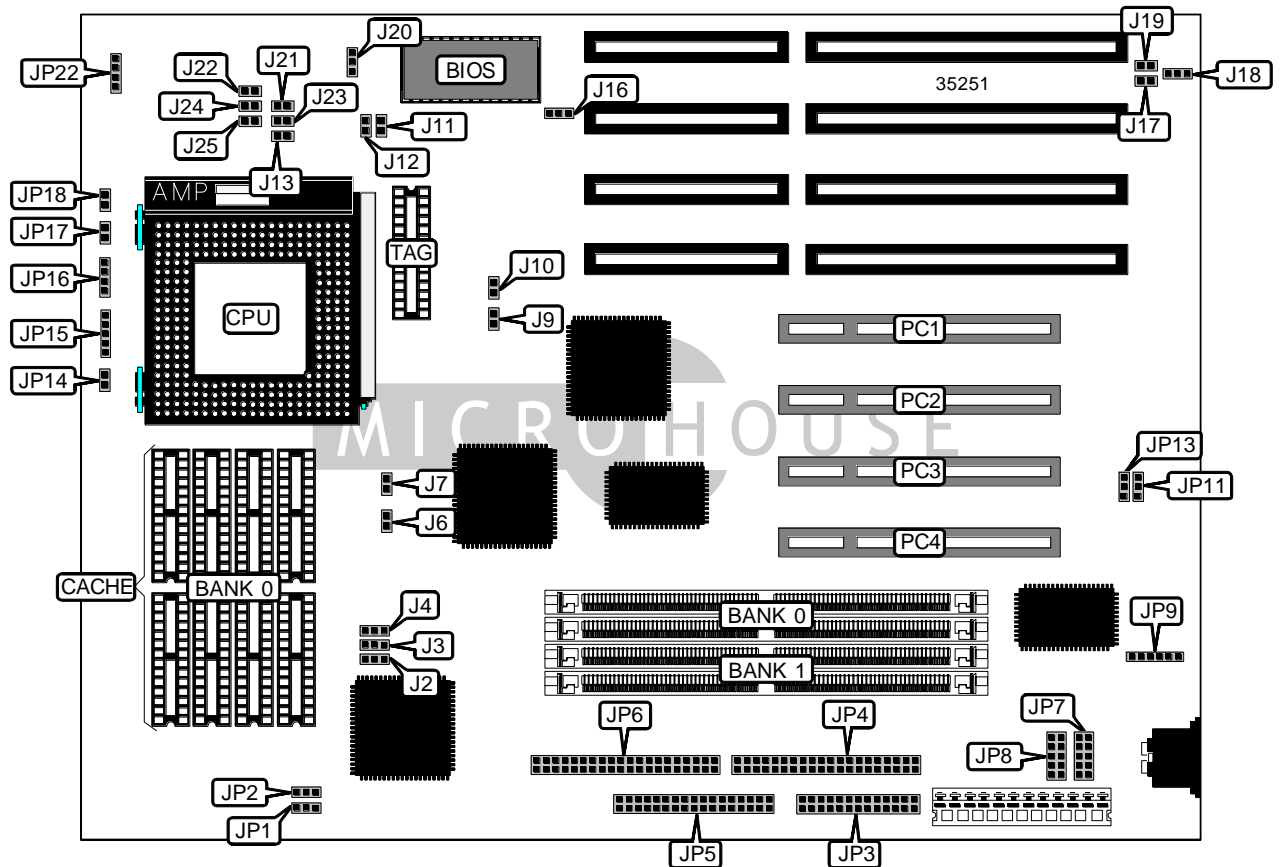


DIAMOND FLOWER, INC.
G5860PA (REV. 0)

| | |
|-------------------------------|---|
| Device Type | Mainboard |
| Processor | Pentium |
| Processor Speed | 75/90/100/120/133MHz |
| Chip Set | OPTI |
| Video Chip Set | None |
| Maximum Onboard Memory | 128MB |
| Maximum Video Memory | None |
| Cache | 256/512/1024KB |
| BIOS | Award |
| Dimensions | 330mm x 220mm |
| I/O Options | 32-bit PCI slots (4), floppy drive interface, IDE interfaces (2), parallel port, PS/2 mouse interface, serial ports (2) |
| NPU Options | None |



Continued on next page . . .

DIAMOND FLOWER, INC.
G5860PA (REV. 0)

... continued from previous page

| CONNECTIONS | | | |
|------------------------|----------|-------------------|-----------|
| Purpose | Location | Purpose | Location |
| Parallel port | JP3 | IDE interface LED | JP14 |
| IDE interface 2 | JP4 | Power LED & LED | JP15 |
| Floppy drive interface | JP5 | Speaker | JP16 |
| IDE interface 1 | JP6 | Reset switch | JP17 |
| Serial port 1 | JP7 | Green LED | JP18 |
| Serial port 2 | JP8 | CPU fan power | JP22 |
| PS/2 mouse interface | JP9 | 32-bit PCI slots | PC1 – PC4 |

| USER CONFIGURABLE SETTINGS | | |
|-------------------------------------|-------|-------------------|
| Function | Label | Position |
| í Factory configured - do not alter | J2 | Pins 2 & 3 closed |
| í Factory configured - do not alter | J3 | Pins 2 & 3 closed |
| í Factory configured - do not alter | J8 | Closed |
| í Factory configured - do not alter | J11 | Closed |
| í Factory configured - do not alter | J12 | Closed |
| í Flash BIOS voltage select 5v | J16 | Pins 1 & 2 closed |
| Flash BIOS voltage select 12v | J16 | Pins 2 & 3 closed |
| í PS/2 mouse IRQ12 enabled | J17 | Closed |
| PS/2 mouse IRQ12 disabled | J17 | Open |
| í Monitor type select color | J18 | Pins 2 & 3 closed |
| Monitor type select monochrome | J18 | Pins 1 & 2 closed |
| í Factory configured - do not alter | J19 | Open |
| í Factory configured - do not alter | J20 | Pins 2 & 3 closed |
| í Factory configured - do not alter | J21 | Closed |
| í Factory configured - do not alter | J22 | Closed |
| í Factory configured - do not alter | J23 | Closed |
| í Factory configured - do not alter | J24 | Closed |
| í Factory configured - do not alter | J25 | Closed |

| SIMM CONFIGURATION | | |
|--------------------|---------------|---------------|
| Size | Bank 0 | Bank 1 |
| 2MB | (2) 256K x 36 | None |
| 4MB | (2) 512K x 36 | None |
| 4MB | (2) 256K x 36 | (2) 256K x 36 |

Continued on next page. . .

DIAMOND FLOWER, INC.
G5860PA (REV. 0)

... continued from previous page

| SIMM CONFIGURATION (CON'T) | | |
|----------------------------|---------------|---------------|
| Size | Bank 0 | Bank 1 |
| 6MB | (2) 512K x 36 | (2) 256K x 36 |
| 8MB | (2) 1M x 36 | None |
| 8MB | (2) 512K x 36 | (2) 512K x 36 |
| 10MB | (2) 1M x 36 | (2) 256K x 36 |
| 12MB | (2) 512K x 36 | (2) 1M x 36 |
| 16MB | (2) 2M x 36 | None |
| 16MB | (2) 1M x 36 | (2) 1M x 36 |
| 18MB | (2) 2M x 36 | (2) 256K x 36 |
| 20MB | (2) 512K x 36 | (2) 2M x 36 |
| 24MB | (2) 2M x 36 | (2) 1M x 36 |
| 32MB | (2) 4M x 36 | None |
| 32MB | (2) 2M x 36 | (2) 2M x 36 |
| 34MB | (2) 4M x 36 | (2) 256K x 36 |
| 36MB | (2) 512K x 36 | (2) 4M x 36 |
| 40MB | (2) 4M x 36 | (2) 1M x 36 |
| 48MB | (2) 2M x 36 | (2) 4M x 36 |
| 64MB | (2) 8M x 36 | None |
| 64MB | (2) 4M x 36 | (2) 4M x 36 |
| 66MB | (2) 8M x 36 | (2) 256K x 36 |
| 68MB | (2) 512K x 36 | (2) 8M x 36 |
| 72MB | (2) 8M x 36 | (2) 1M x 36 |
| 80MB | (2) 2M x 36 | (2) 8M x 36 |
| 96MB | (2) 8M x 36 | (2) 4M x 36 |
| 128MB | (2) 8M x 36 | (2) 8M x 36 |

| CACHE CONFIGURATION | | |
|---------------------|--------------|-------------|
| Size | Bank 0 | TAG |
| 256KB | (8) 32K x 8 | (1) 32K x 8 |
| 512KB | (8) 64K x 8 | (1) 32K x 8 |
| 1MB | (8) 128K x 8 | (1) 32K x 8 |

| CACHE JUMPER CONFIGURATION | | |
|----------------------------|--------|--------|
| Size | J6 | J7 |
| 256KB | Open | Open |
| 512KB | Open | Closed |
| 1MB | Closed | Closed |

Continued on next page. . .

DIAMOND FLOWER, INC.
G5860PA (REV. 0)

... continued from previous page

| CACHE VOLTAGE SELECTION | | |
|-------------------------|-------------------|-------------------|
| Voltage | JP1 | JP2 |
| 3.3v | Pins 1 & 2 closed | Pins 1 & 2 closed |
| í Mixed voltage | Pins 2 & 3 closed | Pins 2 & 3 closed |

| CPU SPEED SELECTION | | | | | |
|---------------------|-------------|------------|--------|--------|--------|
| CPU speed | Clock speed | Multiplier | J9 | J10 | J13 |
| 75MHz | 50MHz | 1.5x | Open | Open | Open |
| 90MHz | 60MHz | 1.5x | Closed | Closed | Open |
| 100MHz | 66MHz | 1.5x | Open | Closed | Open |
| 100MHz | 50MHz | 2x | Open | Open | Closed |
| 120MHz | 60MHz | 2x | Closed | Closed | Closed |
| 133MHz | 66MHz | 2x | Open | Closed | Closed |

| DMA CHANNEL SELECTION | | |
|-----------------------|-------------------|-------------------|
| Channel | JP11 | JP13 |
| í 1 | Pins 2 & 3 closed | Pins 2 & 3 closed |
| 3 | Pins 1 & 2 closed | Pins 1 & 2 closed |