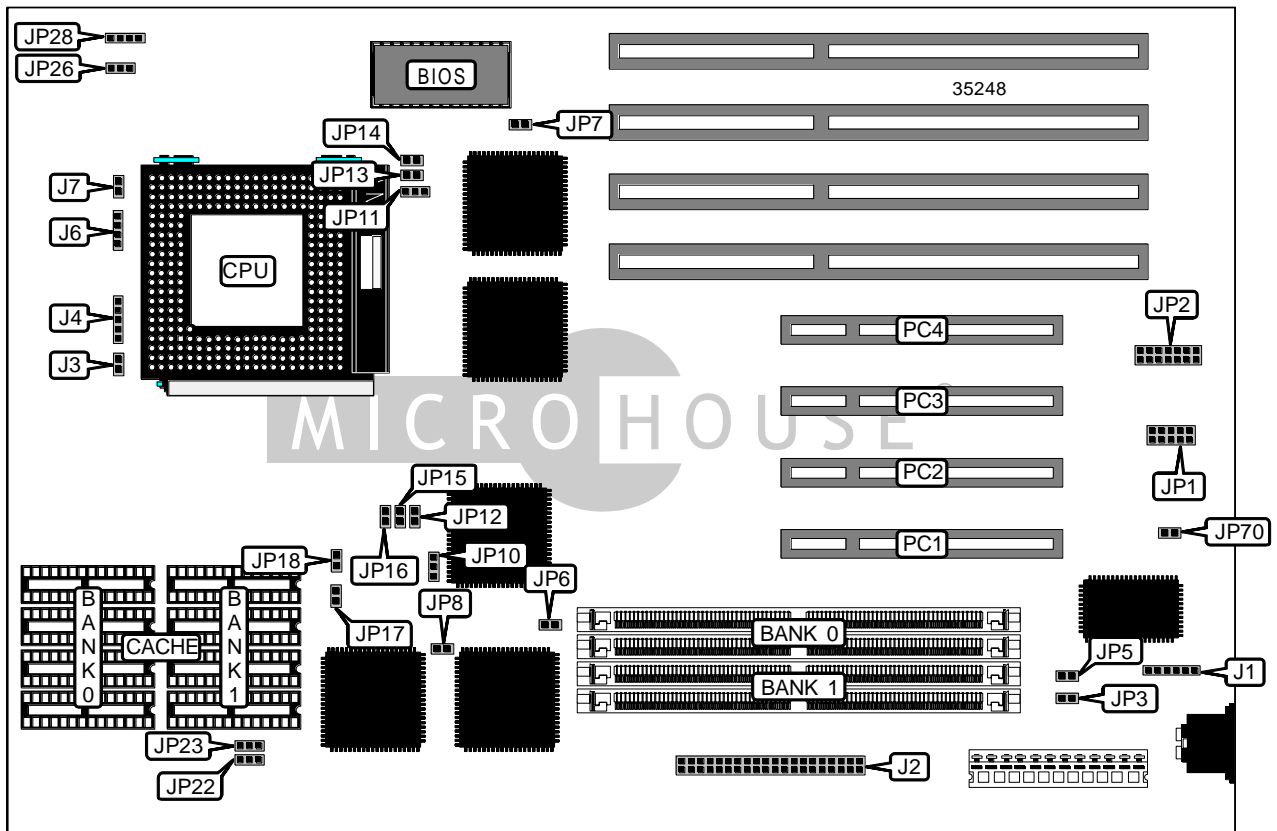


DIAMOND FLOWER, INC.
E586-IPE

Device Type	Mainboard
Processor	Pentium
Processor Speed	60/66MHz
Chip Set	Intel
Video Chip Set	None
Maximum Onboard Memory	128MB
Maximum Video Memory	None
Cache	256/512KB
BIOS	Award
Dimensions	330mm x 218mm
I/O Options	32-bit PCI slots (4), IDE interface, PS/2 mouse interface
NPU Options	None



Continued on next page...

DIAMOND FLOWER, INC.
E 5 8 6 - I P E

... continued from previous page

CONNECTIONS			
Purpose	Location	Purpose	Location
PS/2 mouse interface	J1	Reset switch	J7
IDE interface	J2	Legacy connector	JP2
IDE interface LED	J3	Chassis fan power	JP28
Power LED & keylock	J4	32-bit PCI slots	PC1 – PC4
Speaker	J6		

USER CONFIGURABLE SETTINGS			
Function	Label	Position	
í PS/2 mouse IRQ12 enabled	JP7	Closed	
PS/2 mouse IRQ12 disabled	JP7	Open	
í Monitor type select color	JP11	Pins 1 & 2 closed	
Monitor type select monochrome	JP11	Pins 2 & 3 closed	
í Factory configured - do not alter	JP10	Pins 2 & 3 closed	
í Factory configured - do not alter	JP12	Closed	
í Password normal operation	JP13	Open	
Password clear	JP13	Closed	
í Factory configured - do not alter	JP14	Open	
í Cache type select write back	JP15	Open	
Cache type select write through	JP15	Closed	
í Factory configured - do not alter	JP16	Open	
í Factory configured - do not alter	JP17	Open	
í BIOS type select flash	JP26	Pins 1 & 2 closed	
BIOS type select EPROM	JP26	Pins 2 & 3 closed	
í Factory configured - do not alter	JP70	Open	

SIMM CONFIGURATION		
Size	Bank 0	Bank 1
2MB	(2) 256K x 36	None
4MB	(2) 512K x 36	None
4MB	(2) 256K x 36	(2) 256K x 36
6MB	(2) 512K x 36	(2) 256K x 36
8MB	(2) 1M x 36	None
8MB	(2) 512K x 36	(2) 512K x 36
10MB	(2) 1M x 36	(2) 256K x 36
12MB	(2) 512K x 36	(2) 1M x 36
16MB	(2) 2M x 36	None
16MB	(2) 1M x 36	(2) 1M x 36

Continued on next page...

DIAMOND FLOWER, INC.
E586-IPE

... continued from previous page

SIMM CONFIGURATION (CON'T)		
Size	Bank 0	Bank 1
18MB	(2) 2M x 36	(2) 256K x 36
20MB	(2) 512K x 36	(2) 2M x 36
24MB	(2) 2M x 36	(2) 1M x 36
32MB	(2) 4M x 36	None
32MB	(2) 2M x 36	(2) 2M x 36
34MB	(2) 4M x 36	(2) 256K x 36
36MB	(2) 512K x 36	(2) 4M x 36
40MB	(2) 4M x 36	(2) 1M x 36
48MB	(2) 2M x 36	(2) 4M x 36
64MB	(2) 8M x 36	None
64MB	(2) 4M x 36	(2) 4M x 36
66MB	(2) 8M x 36	(2) 256K x 36
68MB	(2) 512K x 36	(2) 8M x 36
72MB	(2) 8M x 36	(2) 1M x 36
80MB	(2) 2M x 36	(2) 8M x 36
96MB	(2) 8M x 36	(2) 4M x 36
128MB	(2) 8M x 36	(2) 8M x 36

CACHE CONFIGURATION		
Size	Bank 0	Bank 1
256KB	(4) 32K x 8	(4) 32K x 8
512KB	(4) 64K x 8	(4) 64K x 8

CACHE JUMPER CONFIGURATION		
Size	JP22	JP23
None	Pins 1 & 2 closed	Pins 1 & 2 closed
256KB	Pins 1 & 2 closed	Pins 2 & 3 closed
512KB	Pins 2 & 3 closed	Pins 2 & 3 closed

CACHE PARITY CONFIGURATION		
Setting	JP6	JP8
í Enabled	Closed	Closed
Disabled	Open	Open

CPU SPEED SELECTION	
Speed	JP18
60MHz	Closed
66MHz	Open

Continued on next page. . .

DIAMOND FLOWER, INC.
E586-1PE

... continued from previous page

ON BOARD IDE SELECTION		
Setting	JP3	JP5
Disabled	Closed	Open
Enabled	Open	Closed

PCI SELECTION		
INT	IRQ	JP1
A	15	Pins 1 & 2 closed
A	14	Pins 3 & 4 closed
B	11	Pins 5 & 6 closed
C	10	Pins 7 & 8 closed
D	9	Pins 9 & 10 closed