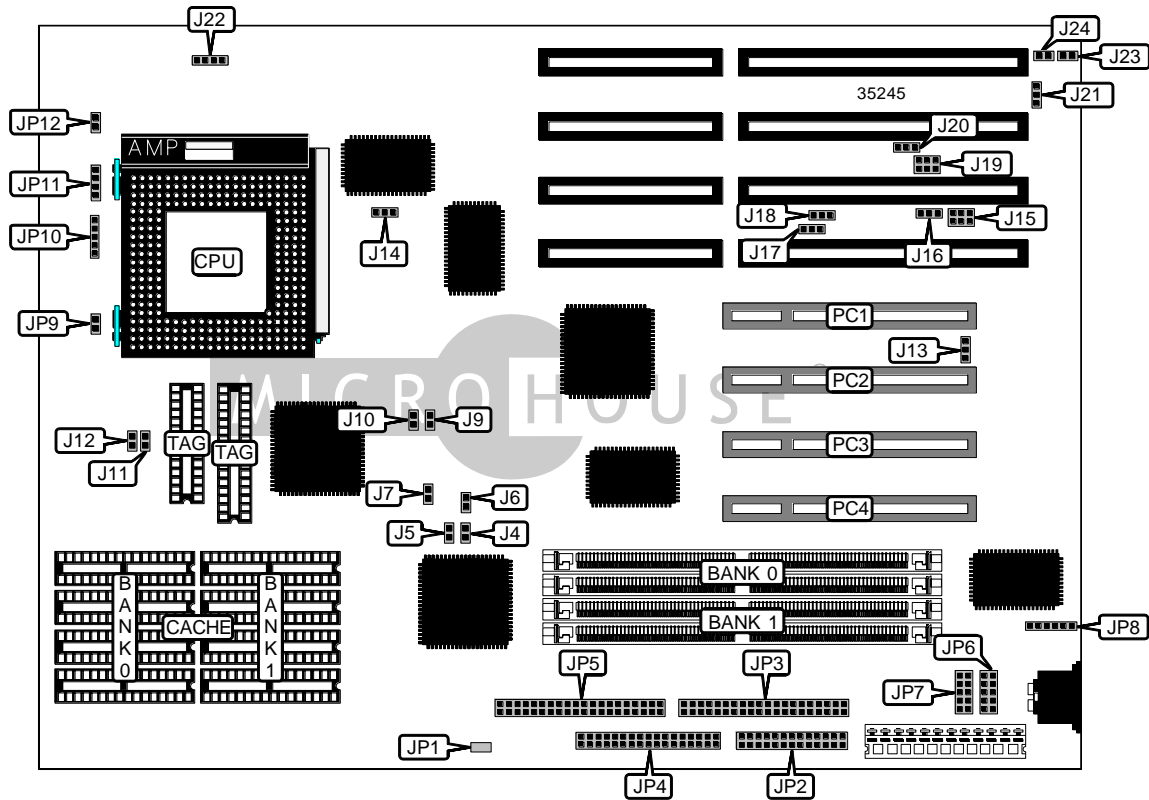


DIAMOND FLOWER, INC.  
586OP

<b>Device Type</b>	Mainboard
<b>Processor</b>	Pentium
<b>Processor Speed</b>	60/66MHz
<b>Chip Set</b>	OPTI
<b>Video Chip Set</b>	None
<b>Maximum Onboard Memory</b>	128MB
<b>Maximum Video Memory</b>	None
<b>Cache</b>	256/512/1024KB
<b>BIOS</b>	Award
<b>Dimensions</b>	330mm x 220mm
<b>I/O Options</b>	32-bit PCI slots (4), floppy drive interface, IDE interfaces (2), parallel port, PS/2 mouse interface, serial ports (2)
<b>NPU Options</b>	None



Continued on next page . . .

DIAMOND FLOWER, INC.  
5860P

... continued from previous page

CONNECTIONS			
Purpose	Location	Purpose	Location
CPU fan power	J22	PS/2 mouse interface	JP8
Parallel port	JP2	IDE interface LED	JP9
IDE interface 2	JP3	Power LED & keylock	JP10
Floppy drive interface	JP4	Speaker	JP11
IDE interface 1	JP5	Reset switch	JP12
Serial port 1	JP6	32-bit PCI slots	PC1 – PC4
Serial port 2	JP7		

USER CONFIGURABLE SETTINGS		
Function	Label	Position
í Factory configured - do not alter	J4	Open
í Factory configured - do not alter	J5	Open
í Factory configured - do not alter	J6	Closed
í Factory configured - do not alter	J9	Open
í Factory configured - do not alter	J10	Open
í CMOS memory normal operation	J13	Pins 2 & 3 closed
CMOS memory clear	J13	Pins 1 & 2 closed
í Factory configured - do not alter	J14	Pins 2 & 3 closed
í Factory configured - do not alter	J16	Pins 2 & 3 closed
í Factory configured - do not alter	J17	Pins 1 & 2 closed
í Factory configured - do not alter	J18	Pins 1 & 2 closed
í Factory configured - do not alter	J20	Pins 2 & 3 closed
í Monitor type select color	J21	Pins 2 & 3 closed
Monitor type select monochrome	J21	Pins 1 & 2 closed
í Factory configured - do not alter	J23	Open
í PS/2 mouse IRQ12 enabled	J24	Closed
PS/2 mouse IRQ12 disabled	J24	Open
í Factory configured - do not alter	JP1	Unidentified

SIMM CONFIGURATION		
Size	Bank 0	Bank 1
2MB	(2) 256K x 36	None
4MB	(2) 512K x 36	None
4MB	(2) 256K x 36	(2) 256K x 36
6MB	(2) 512K x 36	(2) 256K x 36

Continued on next page. . .

DIAMOND FLOWER, INC.  
5860P

... continued from previous page

SIMM CONFIGURATION (CON'T)		
Size	Bank 0	Bank 1
8MB	(2) 1M x 36	None
8MB	(2) 512K x 36	(2) 512K x 36
10MB	(2) 1M x 36	(2) 256K x 36
12MB	(2) 512K x 36	(2) 1M x 36
16MB	(2) 2M x 36	None
16MB	(2) 1M x 36	(2) 1M x 36
18MB	(2) 2M x 36	(2) 256K x 36
20MB	(2) 512K x 36	(2) 2M x 36
24MB	(2) 2M x 36	(2) 1M x 36
32MB	(2) 4M x 36	None
32MB	(2) 2M x 36	(2) 2M x 36
34MB	(2) 4M x 36	(2) 256K x 36
36MB	(2) 512K x 36	(2) 4M x 36
40MB	(2) 4M x 36	(2) 1M x 36
48MB	(2) 2M x 36	(2) 4M x 36
64MB	(2) 8M x 36	None
64MB	(2) 4M x 36	(2) 4M x 36
66MB	(2) 8M x 36	(2) 256K x 36
68MB	(2) 512K x 36	(2) 8M x 36
72MB	(2) 8M x 36	(2) 1M x 36
80MB	(2) 2M x 36	(2) 8M x 36
96MB	(2) 8M x 36	(2) 4M x 36
128MB	(2) 8M x 36	(2) 8M x 36

CACHE CONFIGURATION			
Size	Bank 0	Bank 1	TAG
256KB	(4) 32K x 8	(4) 32K x 8	Unidentified
512KB	(4) 64K x 8	(4) 64K x 8	Unidentified
1MB	(4) 128K x 8	(4) 128K x 8	Unidentified

CACHE JUMPER CONFIGURATION		
Size	J11	J12
256KB	Open	Open
512KB	Open	Closed
1MB	Closed	Closed

Continued on next page. . .

DIAMOND FLOWER, INC.  
5860P

... continued from previous page

CPU SPEED SELECTION	
Speed	J7
60MHz	Closed
66MHz	Open

DMA CHANNEL SELECTION		
Channel	J15	J19
0	Pins 1 & 2 closed	Pins 1 & 2 closed
1	Pins 3 & 4 closed	Pins 3 & 4 closed
3	Pins 5 & 6 closed	Pins 5 & 6 closed