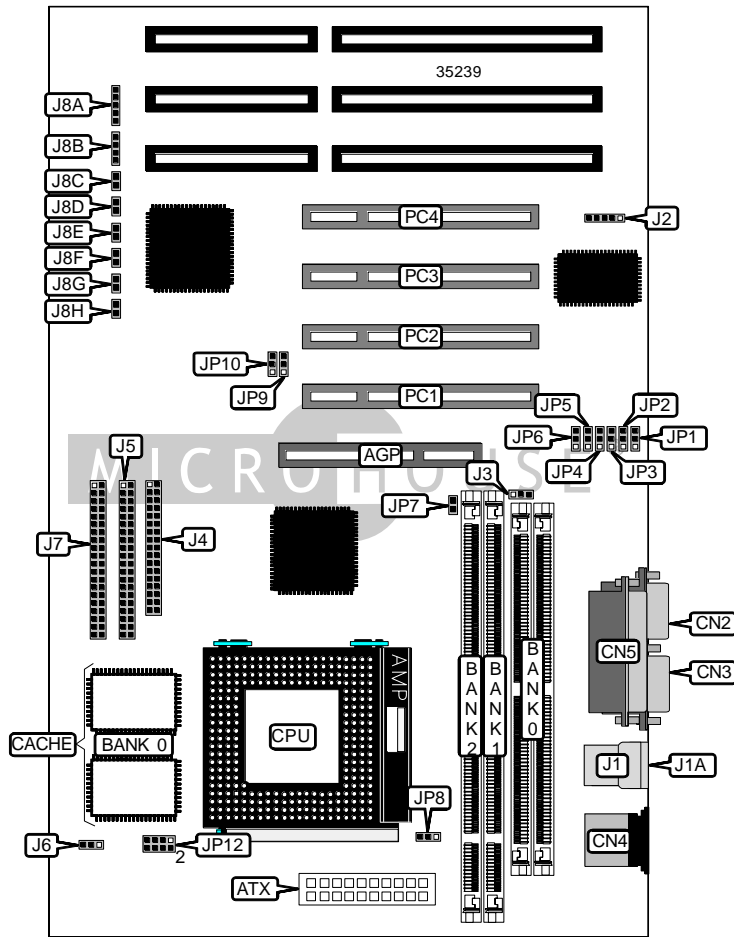


DIAMOND FLOWER, INC.

P5XV3 (REV. A+)

Device Type	Mainboard
Processor	CX 6X86L/CX 686MX/AM K5/AM K6/Pentium/Pentium MMX
Processor Speed	90/100/120/133/150/166/200/233/266MHz
Chip Set	VIA
Video Chip Set	None
Maximum Onboard Memory	256MB (EDO & SDRAM supported)
Maximum Video Memory	None
Cache	512/1024KB
BIOS	Award
Dimensions	305mm x 244mm
I/O Options	32-bit PCI slots (4), floppy drive interface, green PC connector, IDE interfaces (2), parallel port, PS/2 mouse port, serial ports (2), IR connector, USB connectors (2), ATX power connector, AGP slot
NPU Options	None



Continued on next page. . .

DIAMOND FLOWER, INC.
P5XV3 (REV. A+)

... continued from previous page

CONNECTIONS			
Purpose	Location	Purpose	Location
AGP slot	AGP	CPU fan power	J6
ATX power connector	ATX	IDE interface 2	J7
Serial port 2	CN2	Power LED & keylock	J8A
Serial port 1	CN3	Speaker	J8B
PS/2 mouse port	CN4	Reset switch	J8C
Parallel port	CN5	Green PC connector	J8D
USB connector 1	J1	Soft off power supply	J8E
USB connector 2	J1A	Green PC LED	J8F
IR connector	J2	IDE interface LED	J8G
AGP fan power	J3	Sort off power LED	J8H
Floppy drive interface	J4	32-bit PCI slots	PC1 – PC4
IDE interface 1	J5		

USER CONFIGURABLE SETTINGS		
Function	Label	Position
Alarm enabled	JP7	Closed
Alarm disabled	JP7	Open
í CMOS memory normal operation	JP9	Pins 2 & 3 closed
CMOS memory clear	JP9	Pins 1 & 2 closed
í PS/2 mouse IRQ12 enabled	JP10	Pins 1 & 2 closed
PS/2 mouse IRQ12 disabled	JP10	Pins 2 & 3 closed

SIMM CONFIGURATION	
Size	Bank 2
8MB	(2) 1M x 36
16MB	(2) 2M x 36
32MB	(2) 4M x 36
64MB	(2) 8M x 36
128MB	(2) 16M x 36
256MB	(2) 32M x 36
Note: Board accepts EDO memory.	

Continued on next page. . .

DIAMOND FLOWER, INC.
P5XV3 (REV. A+)

... continued from previous page

DIMM CONFIGURATION		
Size	Bank 1	Bank 2
8MB	(1) 1M x 64	None
16MB	(1) 2M x 64	None
16MB	(1) 1M x 64	(1) 1M x 64
24MB	(1) 2M x 64	(1) 1M x 64
32MB	(1) 4M x 64	None
32MB	(1) 2M x 64	(1) 2M x 64
40MB	(1) 4M x 64	(1) 1M x 64
48MB	(1) 4M x 64	(1) 2M x 64
64MB	(1) 8M x 64	None
64MB	(1) 4M x 64	(1) 4M x 64
72MB	(1) 8M x 64	(1) 1M x 64
80MB	(1) 8M x 64	(1) 2M x 64
96MB	(1) 8M x 64	(1) 4M x 64
128MB	(1) 16M x 64	None
128MB	(1) 8M x 64	(1) 8M x 64
136MB	(1) 16M x 64	(1) 1M x 64
144MB	(1) 16M x 64	(1) 2M x 64
160MB	(1) 16M x 64	(1) 4M x 64
192MB	(1) 16M x 64	(1) 8M x 64
256MB	(1) 16M x 64	(1) 16M x 64

Note: Board accepts SDRAM memory.

CACHE CONFIGURATION	
Size	Bank 0
512KB	(2) 64K x 32
1MB	(2) 128K x 32

CPU SPEED SELECTION (CX 6X86L)								
CPU speed	Clock speed	Multiplier	JP1	JP2	JP3	JP4	JP5	JP6
120MHz	50MHz	2x	2 & 3	2 & 3	2 & 3	2 & 3	1 & 2	1 & 2
133MHz	55MHz	2x	2 & 3	2 & 3	1 & 2	2 & 3	1 & 2	1 & 2
150MHz	60MHz	2x	2 & 3	1 & 2	1 & 2	2 & 3	1 & 2	1 & 2
166MHz	66MHz	2x	1 & 2	1 & 2	1 & 2	2 & 3	1 & 2	1 & 2

Note: Pins designated should be in the closed position.

Continued on next page...

DIAMOND FLOWER, INC.
P5XV3 (REV. A+)

... continued from previous page

CPU SPEED SELECTION (CX 6X86MX)								
CPU speed	Clock speed	Multiplier	JP1	JP2	JP3	JP4	JP5	JP6
166MHz	60MHz	2.5x	2 & 3	1 & 2	1 & 2	2 & 3	2 & 3	1 & 2
200MHz	66MHz	2.5x	1 & 2	1 & 2	1 & 2	2 & 3	2 & 3	1 & 2

Note: Pins designated should be in the closed position.

CPU SPEED SELECTION (AM K5)								
CPU speed	Clock speed	Multiplier	JP1	JP2	JP3	JP4	JP5	JP6
90MHz	60MHz	1.5x	2 & 3	1 & 2	1 & 2	1 & 2	1 & 2	1 & 2
100MHz	66MHz	1.5x	1 & 2	1 & 2	1 & 2	1 & 2	1 & 2	1 & 2
120MHz	60MHz	1.5x	2 & 3	1 & 2	1 & 2	1 & 2	1 & 2	1 & 2
133MHz	66MHz	1.5x	1 & 2	1 & 2	1 & 2	1 & 2	1 & 2	1 & 2
166MHz	66MHz	2.5x	1 & 2	1 & 2	1 & 2	2 & 3	2 & 3	1 & 2

Note: Pins designated should be in the closed position.

CPU SPEED SELECTION (AM K6)								
CPU speed	Clock speed	Multiplier	JP1	JP2	JP3	JP4	JP5	JP6
166MHz	66MHz	2.5x	1 & 2	1 & 2	1 & 2	2 & 3	2 & 3	1 & 2
200MHz	66MHz	3x	1 & 2	1 & 2	1 & 2	1 & 2	2 & 3	1 & 2
233MHz	66MHz	3.5x	1 & 2	1 & 2	1 & 2	1 & 2	1 & 2	1 & 2
266MHz	66MHz	4x	1 & 2	1 & 2	1 & 2	1 & 2	2 & 3	2 & 3

Note: Pins designated should be in the closed position.

CPU SPEED SELECTION (INTEL)								
CPU speed	Clock speed	Multiplier	JP1	JP2	JP3	JP4	JP5	JP6
90MHz	60MHz	1.5x	2 & 3	1 & 2	1 & 2	1 & 2	1 & 2	1 & 2
100MHz	66MHz	1.5x	1 & 2	1 & 2	1 & 2	1 & 2	1 & 2	1 & 2
120MHz	60MHz	2x	2 & 3	1 & 2	1 & 2	2 & 3	1 & 2	1 & 2
133MHz	66MHz	2x	1 & 2	1 & 2	1 & 2	2 & 3	1 & 2	1 & 2
150MHz	60MHz	2.5x	2 & 3	1 & 2	1 & 2	2 & 3	2 & 3	1 & 2
166MHz	66MHz	2.5x	1 & 2	1 & 2	1 & 2	2 & 3	2 & 3	1 & 2
200MHz	66MHz	3x	1 & 2	1 & 2	1 & 2	1 & 2	2 & 3	1 & 2

Note: Pins designated should be in the closed position.

CPU SPEED SELECTION (INTEL MMX)								
CPU speed	Clock speed	Multiplier	JP1	JP2	JP3	JP4	JP5	JP6
166MHz	66MHz	2.5x	1 & 2	1 & 2	1 & 2	2 & 3	2 & 3	1 & 2
200MHz	66MHz	3x	1 & 2	1 & 2	1 & 2	1 & 2	2 & 3	1 & 2
233MHz	66MHz	3.5x	1 & 2	1 & 2	1 & 2	1 & 2	1 & 2	1 & 2

Note: Pins designated should be in the closed position.

Continued on next page...

DIAMOND FLOWER, INC.
P5XV3 (REV. A+)

... continued from previous page

CPU VOLTAGE SELECTION		
Voltage	JP8	JP12
2.1v	Pins 1 & 2 closed	Pins 1 & 2 closed
2.2v	Pins 1 & 2 closed	Pins 3 & 4 closed
2.8v	Pins 1 & 2 closed	Pins 7 & 8 closed
2.9v	Pins 1 & 2 closed	Pins 1 & 2, 7 & 8 closed
3.2v	Pins 1 & 2 closed	Pins 5 & 6, 7 & 8 closed
3.3v	Pins 2 & 3 closed	Pins 1 & 2, 5 & 6, 7 & 8 closed
3.5v	Pins 2 & 3 closed	Pins 1 & 2, 3 & 4, 5 & 6, 7 & 8 closed