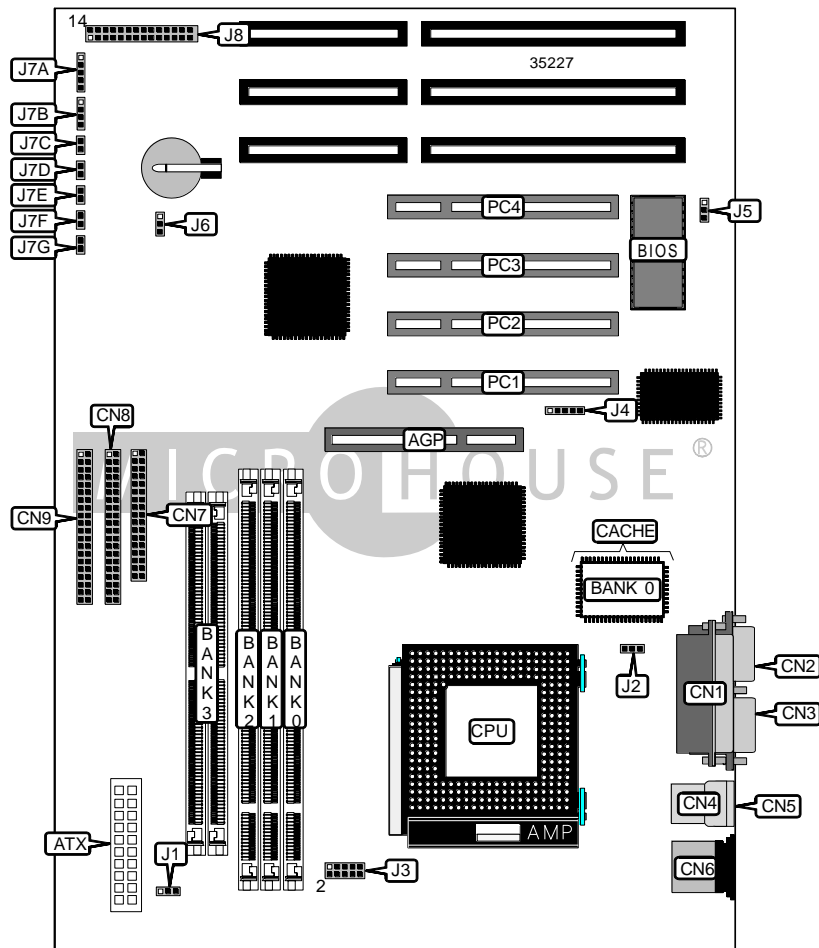


EPOX COMPUTER CO., LTD.

P55-VP3

Device Type	Mainboard
Processor	CX 6X86L/IBM 6X86L/CX 686MX/IBM 6X86MX/AM K5/ AM K6/Pentium/Pentium MMX
Processor Speed	90/100/120/133/150/166/188/200/225/233/266/300/333MHz
Chip Set	VIA
Video Chip Set	None
Maximum Onboard Memory	384MB (EDO & SDRAM supported)
Maximum Video Memory	None
Cache	512KB
BIOS	Award
Dimensions	305mm x 244mm
I/O Options	32-bit PCI slots (4), floppy drive interface, IDE interfaces (2), parallel port, PS/2 mouse port, serial ports (2), IR connector, USB connectors (2), ATX power connector, AGP slot
NPU Options	None



Continued on next page . . .

EPOX COMPUTER CO., LTD.
P 5 5 - V P 3

... continued from previous page

CONNECTIONS			
Purpose	Location	Purpose	Location
AGP slot	AGP	CPU fan power	J2
ATX power connector	ATX	IR connector	J4
Parallel port	CN1	Power LED & keylock	J7A
Serial port 2	CN2	Speaker	J7B
Serial port 1	CN3	Reset switch	J7C
USB connector 1	CN4	Green PC LED	J7D
USB connector 2	CN5	Turbo LED	J7E
PS/2 mouse port	CN6	IDE interface LED	J7F
Floppy drive interface	CN7	Soft off power supply	J7G
IDE interface 1	CN8	32-bit PCI slots	PC1 – PC4
IDE interface 2	CN9		

USER CONFIGURABLE SETTINGS		
Function	Label	Position
Keyboard power on disabled	J1	Pins 1 & 2 closed
Keyboard power on enabled	J1	Pins 2 & 3 closed
í Factory configured - do not alter	J5	Unidentified
í Factory configured - do not alter	J6	Unidentified

SIMM CONFIGURATION	
Size	Bank 3
8MB	(2) 1M x 36
16MB	(2) 2M x 36
32MB	(2) 4M x 36
64MB	(2) 8M x 36
128MB	(2) 16M x 36

Note: Board accepts EDO memory.

DIMM CONFIGURATION			
Size	Bank 0	Bank 1	Bank 2
8MB	(1) 1M x 64	None	None
16MB	(1) 2M x 64	None	None
16MB	(1) 1M x 64	(1) 1M x 64	None
24MB	(1) 2M x 64	(1) 1M x 64	None
24MB	(1) 1M x 64	(1) 1M x 64	(1) 1M x 64
32MB	(1) 4M x 64	None	None
32MB	(1) 2M x 64	(1) 1M x 64	(1) 1M x 64

Continued on next page...

EPOX COMPUTER CO., LTD.
P55-VP3

... continued from previous page

DIMM CONFIGURATION (CON'T)			
Size	Bank 0	Bank 1	Bank 2
32MB	(1) 2M x 64	(1) 2M x 64	None
40MB	(1) 4M x 64	(1) 1M x 64	None
40MB	(1) 2M x 64	(1) 2M x 64	(1) 1M x 64
48MB	(1) 4M x 64	(1) 1M x 64	(1) 1M x 64
48MB	(1) 4M x 64	(1) 2M x 64	None
48MB	(1) 2M x 64	(1) 2M x 64	(1) 2M x 64
64MB	(1) 8M x 64	None	None
64MB	(1) 4M x 64	(1) 2M x 64	(1) 2M x 64
64MB	(1) 4M x 64	(1) 4M x 64	None
72MB	(1) 8M x 64	(1) 1M x 64	None
80MB	(1) 8M x 64	(1) 1M x 64	(1) 1M x 64
80MB	(1) 4M x 64	(1) 4M x 64	(1) 2M x 64
88MB	(1) 8M x 64	(1) 2M x 64	(1) 1M x 64
96MB	(1) 8M x 64	(1) 4M x 64	None
96MB	(1) 4M x 64	(1) 4M x 64	(1) 4M x 64
112MB	(1) 8M x 64	(1) 4M x 64	(1) 2M x 64
128MB	(1) 8M x 64	(1) 4M x 64	(1) 4M x 64
128MB	(1) 8M x 64	(1) 8M x 64	None
136MB	(1) 16M x 64	(1) 1M x 64	None
136MB	(1) 8M x 64	(1) 8M x 64	(1) 1M x 64
144MB	(1) 8M x 64	(1) 8M x 64	(1) 2M x 64
152MB	(1) 16M x 64	(1) 2M x 64	(1) 1M x 64
160MB	(1) 16M x 64	(1) 2M x 64	(1) 2M x 64
160MB	(1) 16M x 64	(1) 4M x 64	None
160MB	(1) 8M x 64	(1) 8M x 64	(1) 4M x 64
168MB	(1) 16M x 64	(1) 4M x 64	(1) 1M x 64
176MB	(1) 16M x 64	(1) 4M x 64	(1) 2M x 64
192MB	(1) 16M x 64	(1) 8M x 64	None
192MB	(1) 8M x 64	(1) 8M x 64	(1) 8M x 64
200MB	(1) 16M x 64	(1) 8M x 64	(1) 1M x 64
208MB	(1) 16M x 64	(1) 8M x 64	(1) 2M x 64
224MB	(1) 16M x 64	(1) 8M x 64	(1) 4M x 64
256MB	(1) 16M x 64	(1) 8M x 64	(1) 8M x 64
384MB	(1) 16M x 64	(1) 16M x 64	(1) 16M x 64

Note: Board accepts SDRAM memory.

CACHE CONFIGURATION	
Size	Bank 0
512KB	(1) 64K x 64

Continued on next page...

EPOX COMPUTER CO., LTD.
P 5 5 - V P 3

... continued from previous page

CPU SPEED SELECTION (CX 6X86L)			
CPU speed	Clock speed	Multiplier	JP3
150MHz	60MHz	2.5x	Pins 3 & 4 closed
166MHz	66MHz	2.5x	Pins 5 & 6 closed
200MHz	75MHz	3x	Pins 7 & 8 closed

CPU SPEED SELECTION (IBM 6X86L)			
CPU speed	Clock speed	Multiplier	JP3
150MHz	60MHz	2.5x	Pins 3 & 4 closed
166MHz	66MHz	2.5x	Pins 5 & 6 closed
200MHz	75MHz	3x	Pins 7 & 8 closed

CPU SPEED SELECTION (CX 6X86MX)			
CPU speed	Clock speed	Multiplier	JP3
166MHz	66MHz	2x	Pins 5 & 6 closed
166MHz	60MHz	2.5x	Pins 9 & 10 closed
200MHz	75MHz	2x	Pins 7 & 8 closed
200MHz	66MHz	2.5x	Pins 11 & 12 closed
233MHz	75MHz	2.5x	Pins 13 & 14 closed
233MHz	66MHz	3x	Pins 15 & 16 closed
266MHz	75MHz	3x	Pins 17 & 18 closed
266MHz	66MHz	3.5x	Pins 19 & 20 closed

CPU SPEED SELECTION (IBM 6X86MX)			
CPU speed	Clock speed	Multiplier	JP3
166MHz	66MHz	2x	Pins 5 & 6 closed
166MHz	60MHz	2.5x	Pins 9 & 10 closed
200MHz	75MHz	2x	Pins 7 & 8 closed
200MHz	66MHz	2.5x	Pins 11 & 12 closed
233MHz	75MHz	2.5x	Pins 13 & 14 closed
233MHz	66MHz	3x	Pins 15 & 16 closed
266MHz	75MHz	3x	Pins 17 & 18 closed
266MHz	66MHz	3.5x	Pins 19 & 20 closed

Continued on next page. . .

EPOX COMPUTER CO., LTD.
P55-VP3

... continued from previous page

CPU SPEED SELECTION (AM K5)			
CPU speed	Clock speed	Multiplier	JP3
90MHz	60MHz	1.5x	Pins 27 & 28 closed
100MHz	66MHz	1.5x	Pins 1 & 2 closed
120MHz	60MHz	2x	Pins 3 & 4 closed
133MHz	66MHz	2x	Pins 5 & 6 closed
150MHz	60MHz	2.5x	Pins 9 & 10 closed
166MHz	66MHz	2.5x	Pins 11 & 12 closed
188MHz	75MHz	2.5x	Pins 13 & 14 closed
200MHz	66MHz	3x	Pins 15 & 16 closed

CPU SPEED SELECTION (AM K6)			
CPU speed	Clock speed	Multiplier	JP3
166MHz	66MHz	2.5x	Pins 11 & 12 closed
200MHz	66MHz	3x	Pins 15 & 16 closed
225MHz	75MHz	3x	Pins 17 & 18 closed
233MHz	66MHz	3.5x	Pins 19 & 20 closed
266MHz	66MHz	4x	Pins 21 & 22 closed
300MHz	66MHz	4.5x	Pins 23 & 24 closed
333MHz	66MHz	5x	Pins 25 & 26 closed

CPU SPEED SELECTION (INTEL)			
CPU speed	Clock speed	Multiplier	JP3
90MHz	60MHz	1.5x	Pins 27 & 28 closed
100MHz	66MHz	1.5x	Pins 1 & 2 closed
120MHz	60MHz	2x	Pins 3 & 4 closed
133MHz	66MHz	2x	Pins 5 & 6 closed
150MHz	60MHz	2.5x	Pins 9 & 10 closed
166MHz	66MHz	2.5x	Pins 11 & 12 closed
188MHz	75MHz	2.5x	Pins 13 & 14 closed
200MHz	66MHz	3x	Pins 15 & 16 closed

CPU SPEED SELECTION (INTEL MMX)			
CPU speed	Clock speed	Multiplier	JP3
166MHz	66MHz	2.5x	Pins 11 & 12 closed
200MHz	66MHz	3x	Pins 15 & 16 closed
225MHz	75MHz	3x	Pins 17 & 18 closed
233MHz	66MHz	3.5x	Pins 19 & 20 closed
266MHz	66MHz	4x	Pins 21 & 22 closed
300MHz	66MHz	4.5x	Pins 23 & 24 closed
333MHz	66MHz	5x	Pins 25 & 26 closed

Continued on next page. . .

EPOX COMPUTER CO., LTD.
P 5 5 - V P 3

... continued from previous page

CPU VOLTAGE SELECTION	
Voltage	JP2
2.1v	Pins 1 & 2 closed
2.2v	Pins 3 & 4 closed
í 2.8v	Pins 5 & 6 closed
2.9v	Pins 7 & 8 closed
3.2v	Pins 9 & 10 closed