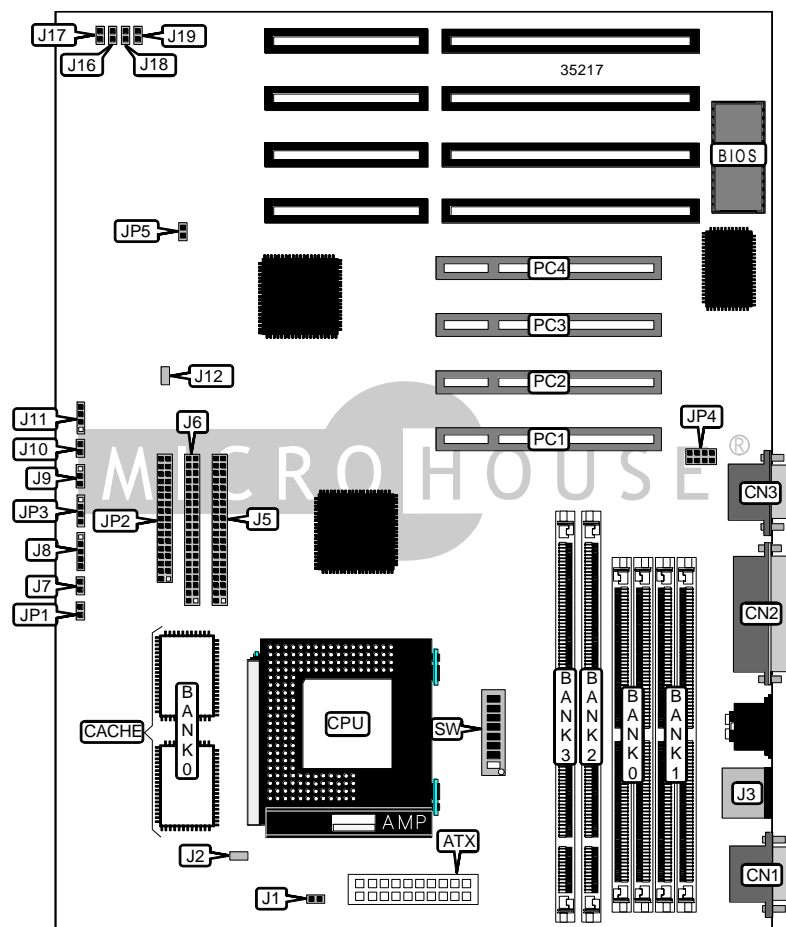


GIGA-BYTE TECHNOLOGY CO., LTD.

GA - 5 8 6 A T X 2

Device Type	Mainboard
Processor	CX 6X86/IBM 6X86/CX 6X86L/IBM 6X86L/CX 686MX/IBM 6X86MX/ AM K5/AM K6/Pentium/Pentium MMX
Processor Speed	90/100/120/133/150/166/180/200/233MHz
Chip Set	Unidentified
Video Chip Set	None
Maximum Onboard Memory	256MB (EDO & SDRAM supported)
Maximum Video Memory	None
Cache	512KB
BIOS	Award
Dimensions	305mm x 244mm
I/O Options	32-bit PCI slots (4), floppy drive interface, green PC connector, IDE interfaces (2), parallel port, PS/2 mouse port, serial ports (2), IR connector, USB connector, ATX power connector
NPU Options	None



Continued on next page. . .

GIGA-BYTE TECHNOLOGY CO., LTD.
GA - 586ATX2

... continued from previous page

CONNECTIONS			
Purpose	Location	Purpose	Location
ATX power connector	ATX	Reset switch	J10
Serial port 1	CN1	Speaker	J11
Parallel port	CN2	Turbo LED	J16
Serial port 2	CN3	Keylock	J17
Chassis fan power	J1	Turbo switch	J18
PS/2 mouse port	J3	Green PC LED	J19
IDE interface 2	J5	Soft off power supply	JP1
IDE interface 1	J6	Floppy drive interface	JP2
Green PC connector	J7	IDE interface LED	JP3
IR connector	J8	USB connector	JP4
Power LED	J9	32-bit PCI slots	PC1 – PC4

USER CONFIGURABLE SETTINGS		
Function	Label	Position
í Factory configured - do not alter	J2	Unidentified
í Factory configured - do not alter	J12	Unidentified
System after AC BACK select full on	JP5	Closed
System after AC BACK select soft off	JP5	Open
í Factory configured - do not alter	SW/8	Off

SIMM CONFIGURATION		
Size	Bank 0	Bank 1
8MB	(2) 1M x 36	None
16MB	(2) 2M x 36	None
16MB	(2) 1M x 36	(2) 1M x 36
24MB	(2) 2M x 36	(2) 1M x 36
32MB	(2) 4M x 36	None
32MB	(2) 2M x 36	(2) 2M x 36
40MB	(2) 4M x 36	(2) 1M x 36
48MB	(2) 4M x 36	(2) 2M x 36
64MB	(2) 8M x 36	None
64MB	(2) 4M x 36	(2) 4M x 36
72MB	(2) 8M x 36	(2) 1M x 36
80MB	(2) 8M x 36	(2) 2M x 36
96MB	(2) 8M x 36	(2) 4M x 36
128MB	(2) 8M x 36	(2) 8M x 36

Continued on next page...

GIGA-BYTE TECHNOLOGY CO., LTD.
GA - 586 ATX 2

... continued from previous page

SIMM CONFIGURATION (CON'T)		
Size	Bank 0	Bank 1
128MB	(2) 16M x 36	None
136MB	(2) 16M x 36	(2) 1M x 36
144MB	(2) 16M x 36	(2) 2M x 36
160MB	(2) 16M x 36	(2) 4M x 36
192MB	(2) 16M x 36	(2) 8M x 36
256MB	(2) 16M x 36	(2) 16M x 36

Note: Board accepts EDO memory.

DIMM CONFIGURATION		
Size	Bank 2	Bank 3
8MB	(1) 1M x 64	None
16MB	(1) 2M x 64	None
16MB	(1) 1M x 64	(1) 1M x 64
24MB	(1) 2M x 64	(1) 1M x 64
32MB	(1) 4M x 64	None
32MB	(1) 2M x 64	(1) 2M x 64
40MB	(1) 4M x 64	(1) 1M x 64
48MB	(1) 4M x 64	(1) 2M x 64
64MB	(1) 8M x 64	None
64MB	(1) 4M x 64	(1) 4M x 64
72MB	(1) 8M x 64	(1) 1M x 64
80MB	(1) 8M x 64	(1) 2M x 64
96MB	(1) 8M x 64	(1) 4M x 64
128MB	(1) 16M x 64	None
128MB	(1) 8M x 64	(1) 8M x 64
136MB	(1) 16M x 64	(1) 1M x 64
144MB	(1) 16M x 64	(1) 2M x 64
160MB	(1) 16M x 64	(1) 4M x 64
192MB	(1) 16M x 64	(1) 8M x 64
256MB	(1) 16M x 64	(1) 16M x 64

Note: Board accepts SDRAM memory.

CACHE CONFIGURATION	
Size	Bank 0
512KB	(2) 64K x 32

Continued on next page...

GIGA-BYTE TECHNOLOGY CO., LTD.
GA - 5 8 6 A T X 2

... continued from previous page

CPU SPEED SELECTION (CX 6X86)					
CPU speed	Clock speed	Multiplier	SW/1	SW/2	SW/3
150MHz	60MHz	2x	On	On	Off
166MHz	66MHz	2x	Off	On	Off

CPU SPEED SELECTION (IBM 6X86)					
CPU speed	Clock speed	Multiplier	SW/1	SW/2	SW/3
150MHz	60MHz	2x	On	On	Off
166MHz	66MHz	2x	Off	On	Off

CPU SPEED SELECTION (CX 6X86L)					
CPU speed	Clock speed	Multiplier	SW/1	SW/2	SW/3
150MHz	60MHz	2x	On	On	Off
166MHz	66MHz	2x	Off	On	Off

CPU SPEED SELECTION (IBM 6X86L)					
CPU speed	Clock speed	Multiplier	SW/1	SW/2	SW/3
150MHz	60MHz	2x	On	On	Off
166MHz	66MHz	2x	Off	On	Off

CPU SPEED SELECTION (CX 6X86MX)					
CPU speed	Clock speed	Multiplier	SW/1	SW/2	SW/3
166MHz	60MHz	2.5x	On	On	On
200MHz	66MHz	2.5x	Off	On	On
233MHz	66MHz	3x	Off	Off	On

CPU SPEED SELECTION (IBM 6X86MX)					
CPU speed	Clock speed	Multiplier	SW/1	SW/2	SW/3
166MHz	60MHz	2.5x	On	On	On
200MHz	66MHz	2.5x	Off	On	On
233MHz	66MHz	3x	Off	Off	On

Continued on next page...

GIGA-BYTE TECHNOLOGY CO., LTD.
GA - 5 8 6 A T X 2

... continued from previous page

CPU SPEED SELECTION (AM K5)					
CPU speed	Clock speed	Multiplier	SW/1	SW/2	SW/3
133MHz	66MHz	2x	Off	On	Off
166MHz	66MHz	2.5x	Off	On	On

CPU SPEED SELECTION (AM K6)					
CPU speed	Clock speed	Multiplier	SW/1	SW/2	SW/3
166MHz	66MHz	2.5x	Off	On	On
180MHz	60MHz	3x	On	Off	On
200MHz	66MHz	3x	Off	Off	On
233MHz	66MHz	3.5x	Off	Off	Off

CPU SPEED SELECTION (INTEL)					
CPU speed	Clock speed	Multiplier	SW/1	SW/2	SW/3
90MHz	60MHz	1.5x	On	Off	Off
100MHz	66MHz	1.5x	Off	Off	Off
120MHz	60MHz	2x	On	On	Off
133MHz	66MHz	2x	Off	On	Off
150MHz	60MHz	2.5x	On	On	On
166MHz	66MHz	2.5x	Off	On	On
180MHz	60MHz	3x	On	Off	On
200MHz	66MHz	3x	Off	Off	On

CPU SPEED SELECTION (INTEL MMX)					
CPU speed	Clock speed	Multiplier	SW/1	SW/2	SW/3
150MHz	60MHz	2.5x	On	On	On
166MHz	66MHz	2.5x	Off	On	On
200MHz	66MHz	3x	Off	Off	On
233MHz	66MHz	3.5x	Off	Off	Off

Continued on next page...

GIGA-BYTE TECHNOLOGY CO., LTD.
GA - 5 8 6 A T X 2

... continued from previous page

CPU VOLTAGE SELECTION				
Voltage	SW/4	SW/5	SW/6	SW/7
Auto	Off	Off	Off	On
2.0v	Off	Off	Off	Off
2.1v	Off	Off	On	Off
2.2v	Off	On	Off	Off
2.3v	Off	On	On	Off
2.4v	On	Off	Off	Off
2.5v	On	Off	On	Off
2.6v	On	On	Off	Off
2.7v	On	On	On	Off
2.8v	Off	Off	Off	On
2.9v	Off	Off	On	On
3.0v	Off	On	Off	On
3.1v	Off	On	On	On
3.2v	On	Off	Off	On
3.3v	On	Off	On	On
3.4v	On	On	Off	On
3.5v	On	On	On	On