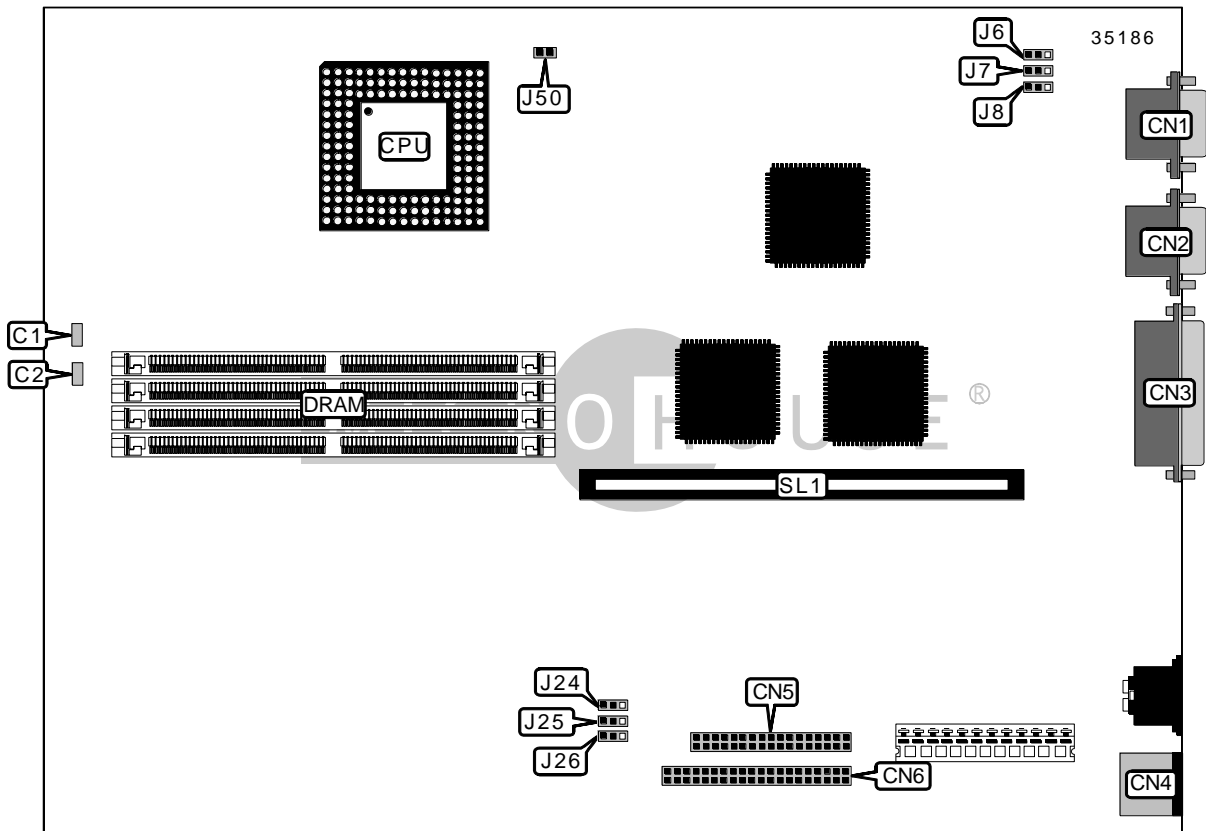


DIGITAL EQUIPMENT CORPORATION CELEBRIS 486

Device Type	Mainboard
Processor	80486SX/80486DX/80486DX2/P24D/P24T/P24CT
Processor Speed	25/33/50(internal)/66(internal)/100(internal)MHz
Chip Set	Unidentified
Video Chip Set	Unidentified
Maximum Onboard Memory	128MB
Maximum Video Memory	1MB
Cache	256KB
BIOS	Unidentified
Dimensions	254mm x 218mm
I/O Options	Floppy drive interface, IDE interface, PS/2 mouse port, riser slot
NPU Options	None



Continued on next page. . .

DIGITAL EQUIPMENT CORPORATION
 CELEBRIS 486

... continued from previous page

CONNECTIONS			
Purpose	Location	Purpose	Location
Chassis fan power	C1	PS/2 mouse port	CN4
Speaker	C2	Floppy drive interface	CN5
VGA port	CN1	IDE interface	CN6
Serial port	CN2	Riser slot	SL1
Parallel port	CN3		

Note: VGA & serial port are shown for informational purposes only. The location may not be exact.

USER CONFIGURABLE SETTINGS		
Function	Label	Position
EEPROM write control disabled	J24	Pins 2 & 3 closed
EEPROM write control enabled	J24	Pins 1 & 2 closed
Setup control disabled	J25	Pins 2 & 3 closed
Setup control enabled	J25	Pins 1 & 2 closed
Floppy drive write control disabled	J26	Pins 2 & 3 closed
Floppy drive write control enabled	J26	Pins 1 & 2 closed

SIMM CONFIGURATION				
Size	Bank 0	Bank 1	Bank 2	Bank 3
8MB	(1) 2M x 36	None	None	None
16MB	(1) 4M x 36	None	None	None
16MB	(1) 2M x 36	(1) 2M x 36	None	None
24MB	(1) 4M x 36	(1) 2M x 36	None	None
24MB	(1) 2M x 36	(1) 2M x 36	(1) 2M x 36	None
24MB	(1) 2M x 36	(1) 4M x 36	None	None
32MB	(1) 8M x 36	None	None	None
32MB	(1) 4M x 36	(1) 2M x 36	(1) 2M x 36	None
32MB	(1) 4M x 36	(1) 4M x 36	None	None
32MB	(1) 2M x 36	(1) 2M x 36	(1) 2M x 36	(1) 2M x 36
40MB	(1) 8M x 36	(1) 2M x 36	None	None
40MB	(1) 4M x 36	(1) 2M x 36	(1) 2M x 36	(1) 2M x 36
40MB	(1) 2M x 36	(1) 4M x 36	(1) 4M x 36	None
40MB	(1) 2M x 36	(1) 8M x 36	None	None
48MB	(1) 8M x 36	(1) 2M x 36	(1) 2M x 36	None
48MB	(1) 8M x 36	(1) 4M x 36	None	None
48MB	(1) 4M x 36	(1) 4M x 36	(1) 4M x 36	None

Continued on next page...

DIGITAL EQUIPMENT CORPORATION
 CELEBRIS 486

... continued from previous page

SIMM CONFIGURATION (CON'T)				
Size	Bank 0	Bank 1	Bank 2	Bank 3
48MB	(1) 4M x 36	(1) 8M x 36	None	None
56MB	(1) 8M x 36	(1) 2M x 36	(1) 2M x 36	(1) 2M x 36
56MB	(1) 2M x 36	(1) 4M x 36	(1) 4M x 36	(1) 4M x 36
64MB	(1) 8M x 36	(1) 4M x 36	(1) 4M x 36	None
64MB	(1) 8M x 36	(1) 8M x 36	None	None
64MB	(1) 4M x 36	(1) 4M x 36	(1) 4M x 36	(1) 4M x 36
72MB	(1) 2M x 36	(1) 8M x 36	(1) 8M x 36	None
80MB	(1) 8M x 36	(1) 4M x 36	(1) 4M x 36	(1) 4M x 36
80MB	(1) 4M x 36	(1) 8M x 36	(1) 8M x 36	None
96MB	(1) 8M x 36	(1) 8M x 36	(1) 8M x 36	None
104MB	(1) 2M x 36	(1) 8M x 36	(1) 8M x 36	(1) 8M x 36
112MB	(1) 4M x 36	(1) 8M x 36	(1) 8M x 36	(1) 8M x 36
128MB	(1) 8M x 36	(1) 8M x 36	(1) 8M x 36	(1) 8M x 36

CACHE CONFIGURATION
Note: 256KB cache is factory installed and is not configurable. The location is unidentified.

VIDEO MEMORY CONFIGURATION
Note: 1MB video memory is factory installed and is not configurable. The location is unidentified.

CPU SPEED SELECTION	
Speed	J6
25MHz	Pins 2 & 3 closed
33MHz	Pins 1 & 2 closed
50iMHz	Pins 2 & 3 closed
66iMHz	Pins 1 & 2 closed
100iMHz	Pins 1 & 2 closed

Continued on next page. . .

DIGITAL EQUIPMENT CORPORATION
CELEBRIS 486

... continued from previous page

CPU TYPE SELECTION	
Type	J50
80486SX	Open
80486DX	Open
80486DX2	Open
P24D	Closed
P24T	Closed
P24CT	Closed

SERIAL BOOT CONTROL SELECTION		
Setting	J7	J8
Disabled	Pins 2 & 3 closed	Pins 2 & 3 closed
Enabled	Pins 1 & 2 closed	Pins 1 & 2 closed