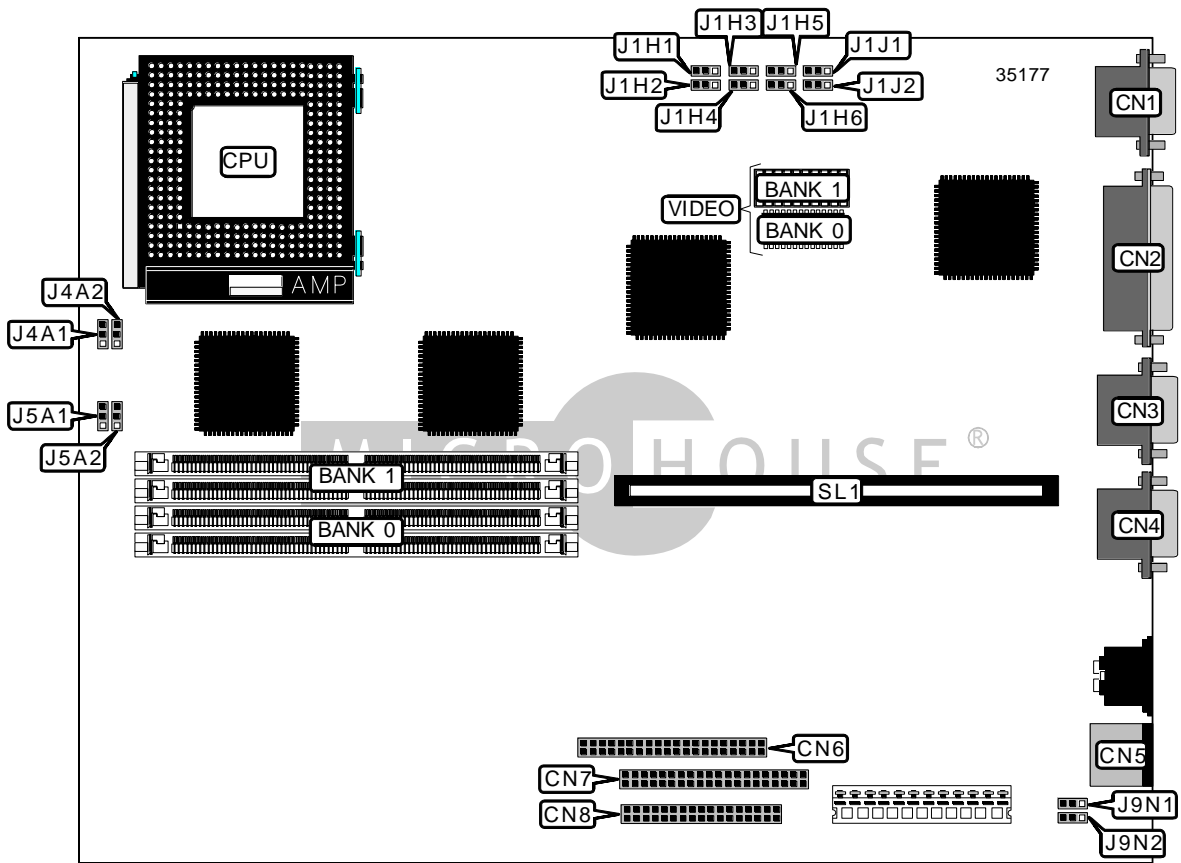


# DIGITAL EQUIPMENT CORPORATION STARION 700

<b>Device Type</b>	Mainboard
<b>Processor</b>	Pentium
<b>Processor Speed</b>	60/90MHz
<b>Chip Set</b>	Unidentified
<b>Video Chip Set</b>	Cirrus Logic
<b>Maximum Onboard Memory</b>	72MB
<b>Maximum Video Memory</b>	2MB
<b>Cache</b>	256KB
<b>BIOS</b>	Unidentified
<b>Dimensions</b>	254mm x 218mm
<b>I/O Options</b>	Floppy drive interface, IDE interfaces (2), parallel port, PS/2 mouse port, serial ports (2), VGA port, riser slot
<b>NPU Options</b>	None



*Continued on next page...*

DIGITAL EQUIPMENT CORPORATION  
STARION 700

... continued from previous page

CONNECTIONS			
Purpose	Location	Purpose	Location
VGA port	CN1	Floppy drive interface	CN6
Parallel port	CN2	IDE interface	CN7
Serial port	CN3	IDE interface	CN8
Serial port	CN4	Riser slot	SL1
PS/2 mouse port	CN5		

Note: VGA & serial ports are shown for informational purposes only. The location may not be exact.

USER CONFIGURABLE SETTINGS		
Function	Label	Position
BIOS recovery mode enabled	J1H1	Closed
BIOS recovery mode disabled	J1H1	Open
BIOS upgrade enabled	J1H2	Closed
BIOS upgrade disabled	J1H2	Open
Setup enabled	J1H3	Closed
Setup disabled	J1H3	Open
Password enabled	J1H4	Closed
Password disabled	J1H4	Open
Monitor type select color	J1H5	Closed
Monitor type select monochrome	J1H5	Open
í Factory configured - do not alter	J1H6	Unidentified
í Factory configured - do not alter	J1J1	Unidentified
í Factory configured - do not alter	J1J2	Unidentified
í Factory configured - do not alter	J5A1	Unidentified
Turbo enabled	J5A2	Closed
Turbo disabled	J5A2	Open
í Factory configured - do not alter	J9N1	Unidentified
í Factory configured - do not alter	J9N2	Unidentified

SIMM CONFIGURATION			
Size	Bank 0	Bank 1	Bank 2
8MB	None	None	8MB
16MB	(2) 1M x 36	(2) 1M x 36	8MB
24MB	(2) 2M x 36	(2) 2M x 36	8MB
40MB	(2) 4M x 36	(2) 4M x 36	8MB
72MB	(2) 8M x 36	(2) 8M x 36	8MB

Note: Bank 2 is factory installed with 8MB. The location is unidentified.

Continued on next page...

DIGITAL EQUIPMENT CORPORATION  
STARION 700

... continued from previous page

CACHE CONFIGURATION		
Note: The location of the cache is unidentified.		

VIDEO MEMORY CONFIGURATION		
Size	Bank 0	Bank 1
1MB	(1) 256K x 16	None
2MB	(1) 256K x 16	(1) 256K x 16

FAN SPEED SELECTION		
Setting	J4A1	J4A2
Slow	Closed	Open
Fast	Open	Closed