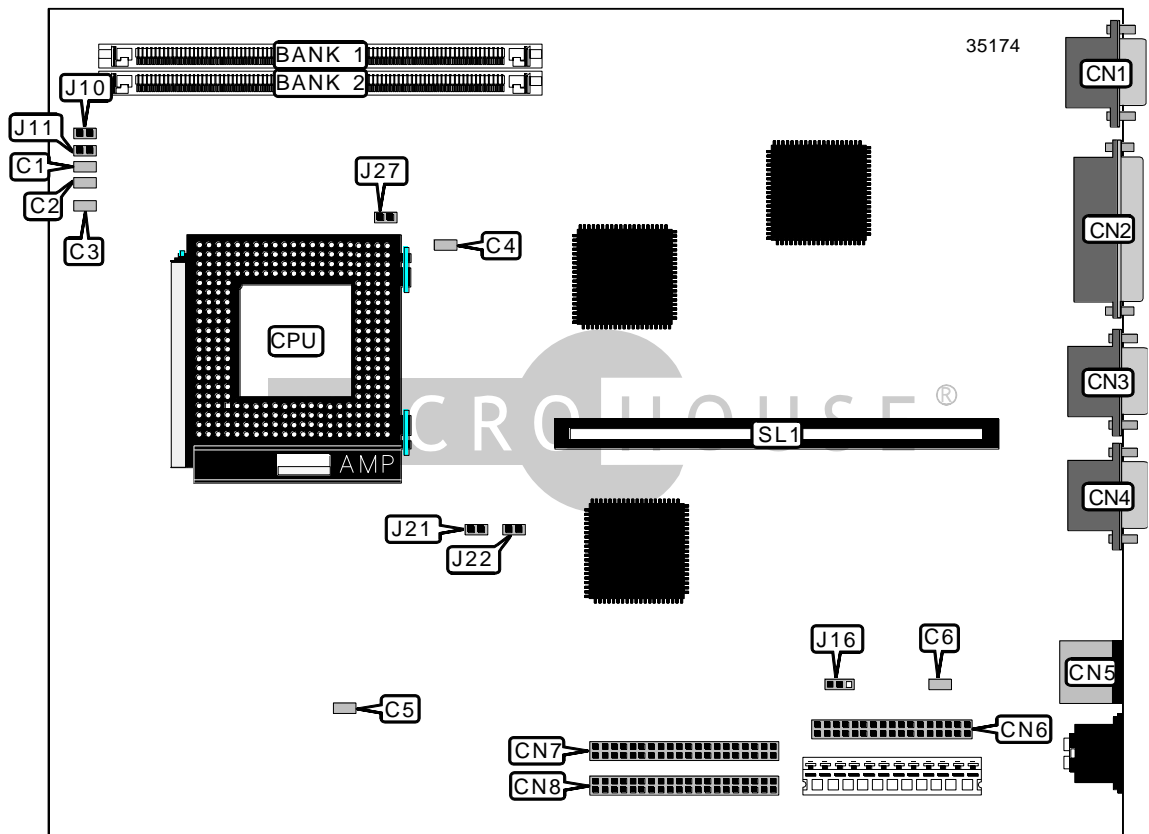


DIGITAL EQUIPMENT CORPORATION STARION 400I, 500I, 600I, 700I, 800I, 900I

Device Type	Mainboard
Processor	Pentium
Processor Speed	75/90/100MHz
Chip Set	Unidentified
Video Chip Set	S3
Maximum Onboard Memory	128MB
Maximum Video Memory	1MB
Cache	256KB
BIOS	Unidentified
Dimensions	254mm x 218mm
I/O Options	Floppy drive interface, IDE interfaces (2), parallel port, PS/2 mouse port, serial ports (2), VGA port, riser slot
NPU Options	None



Continued on next page...

DIGITAL EQUIPMENT CORPORATION
 STARION 400I, 500I, 600I, 700I, 800I, 900I

... continued from previous page

CONNECTIONS			
Purpose	Location	Purpose	Location
VGA port	CN1	Floppy drive interface	CN6
Parallel port	CN2	IDE interface 2	CN7
Serial port	CN3	IDE interface 1	CN8
Serial port	CN4	Riser slot	SL1
PS/2 mouse port	CN5		

Note: VGA & serial ports are shown for location purposes only. The location may not be exact.

USER CONFIGURABLE SETTINGS		
Function	Label	Position
í Factory configured - do not alter	C1	Unidentified
í Factory configured - do not alter	C2	Unidentified
í Factory configured - do not alter	C3	Unidentified
í Factory configured - do not alter	C4	Unidentified
í Factory configured - do not alter	C5	Unidentified
í Factory configured - do not alter	C6	Unidentified
í Recovery mode normal operation	J10	Open
Recovery mode enabled	J10	Closed
í Password normal operation	J11	Open
Password memory clear	J11	Closed
í CMOS memory normal operation	J16	Pins 1 & 2 closed
CMOS memory clear	J16	Pins 2 & 3 closed
CPU frequency select 3/2	J27	Open
CPU frequency select 2/1	J27	Closed

SIMM CONFIGURATION			
Size	Bank 0	Bank 1	Bank 2
8MB	8MB	None	None
16MB	8MB	(1) 1M x 36	(1) 1M x 36
24MB	8MB	(1) 2M x 36	(1) 2M x 36
40MB	8MB	(1) 4M x 36	(1) 4M x 36
72MB	8MB	(1) 8M x 36	(1) 8M x 36
128MB	Disabled	(1) 16M x 36	(1) 16M x 36

Note: Bank 0 is factory installed and is not configurable. The location is unidentified. Some boards have 16MB factory installed.

CACHE CONFIGURATION
Note: Board is factory installed with 256KB cache. The location is unidentified.

Continued on next page. . .

DIGITAL EQUIPMENT CORPORATION
STARION 400I, 500I, 600I, 700I, 800I, 900I

... continued from previous page

VIDEO MEMORY CONFIGURATION

Note: Board is factory installed with 1MB cache. The location is unidentified.

CPU SPEED SELECTION

CPU speed	Clock speed	Multiplier	J21	J22
75MHz	50MHz	1.5x	Open	Open
90MHz	60MHz	1.5x	Closed	Open
100MHz	66MHz	1.5x	Closed	Closed