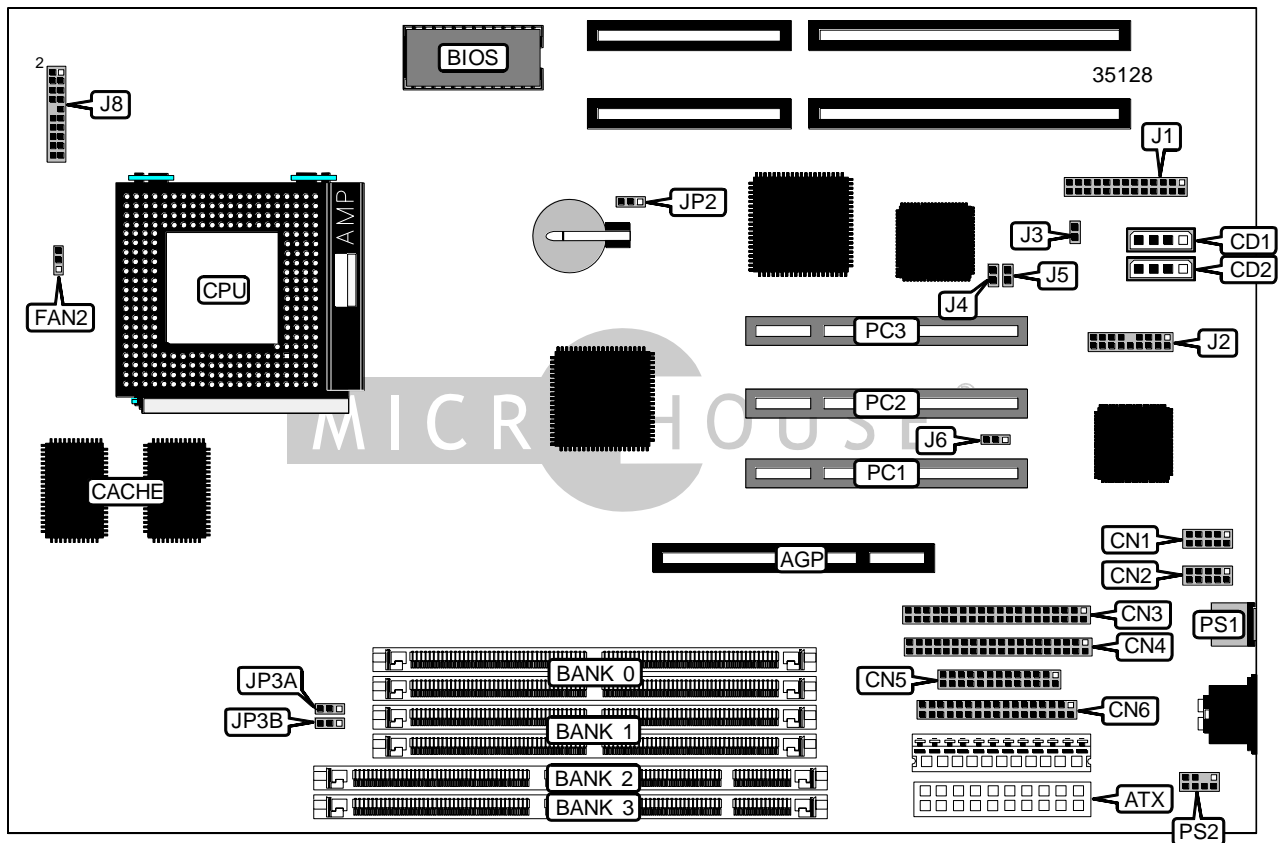


PC CHIPS MANUFACTURING, LTD.

M 5 7 0

Device Type	Mainboard
Processor	CX 6X86L/IBM 6X86L/CX 6X86MX/IBM 6X86MX/AM K6/IDT C6/Pentium/Pentium MMX
Processor Speed	Unidentified
Chip Set	Unidentified
Video Chip Set	None
Maximum Onboard Memory	640MB (EDO & SDRAM supported)
Maximum Video Memory	None
Cache	1024KB
BIOS	Unidentified
I/O Options	32-bit PCI slots (3), Audio in - CD-ROM (2), floppy drive interface, game/sound interface, IDE interface (2), parallel port, PS/2 mouse port, PS/2 mouse interface, serial ports (2), AGP slot, USB connector (2), IR connector, green PC connector, wake on LAN connector



Continued on next page. . .

PC CHIPS MANUFACTURING, LTD.
M 5 7 0

... continued from previous page

CONNECTIONS			
Purpose	Location	Purpose	Location
AGP Slot	AGP	IR connector	J2/pins 13, 15-18
ATX power connector	ATX	PS/2 mouse interface	J2/pins 9, 11, 12, 14
Audio in - CD-ROM	CD1	Digital audio in	J4
Audio in - CD-ROM	CD2	Digital audio out	J5
Serial port 1	CN1	Wake on LAN connector	J6
Serial port 2	CN2	Power LED & keylock	J8/pins 1, 3, 5, 7, 9
IDE interface 2	CN3	Speaker	J8/pins 2, 4, 6, 8
IDE interface 1	CN4	Turbo LED	J8/pins 13 & 14
Parallel port	CN5	IDE interface LED	J8/pins 15 & 16
Floppy drive interface	CN6	Reset switch	J8/pins 17 & 18
CPU fan power	FAN2	Green PC connector	J8/pins 19 & 20
Game/sound connector	J1	32-bit PCI slots	PC1 - PC3
USB connector 1	J2/pins 1, 3, 5, 7	PS/2 mouse port	PS1
USB connector 2	J2/pins 2, 4, 6, 8	PS/2 mouse interface	PS2

USER CONFIGURABLE SETTINGS		
Function	Label	Position
í CMOS memory normal operation	JP2	Pins 1 & 2 closed
CMOS memory clear	JP2	Pins 2 & 3 closed
Special microphone selected	J3	Closed
Normal microphone selected	J3	Open

SIMM CONFIGURATION		
Size	Bank 0	Bank 1
8MB	(2) 1MB x 36	None
16MB	(2) 1MB x 36	(2) 1MB x 36
16MB	(2) 2MB x 36	None
24MB	(2) 2MB x 36	(2) 1MB x 36
32MB	(2) 2MB x 36	(2) 2MB x 36
32MB	(2) 4MB x 36	None
40MB	(2) 4MB x 36	(2) 1MB x 36
48MB	(2) 4MB x 36	(2) 2MB x 36
64MB	(2) 4MB x 36	(2) 4MB x 36
64MB	(2) 8MB x 36	None
72MB	(2) 8MB x 36	(2) 1MB x 36
80MB	(2) 8MB x 36	(2) 2MB x 36
96MB	(2) 8MB x 36	(2) 4MB x 36
128MB	(2) 8MB x 36	(2) 8MB x 36
128MB	(2) 16MB x 36	None
256MB	(2) 16MB x 36	(2) 16MB x 36
256MB	(2) 32MB x 36	None
512MB	(2) 32MB x 36	(2) 32MB x 36

Continued on next page. . .

PC CHIPS MANUFACTURING, LTD.
M570

... continued from previous page

DIMM CONFIGURATION		
Size	Bank 2	Bank 3
8MB	(1) 1MB x 64	None
16MB	(1) 1MB x 64	(1) 2MB x 64
16MB	(1) 2MB x 64	None
24MB	(1) 2MB x 64	(1) 1MB x 64
32MB	(1) 2MB x 64	(1) 2MB x 64
32MB	(1) 4MB x 64	None
40MB	(1) 4MB x 64	(1) 1MB x 64
48MB	(1) 4MB x 64	(1) 2MB x 64
64MB	(1) 4MB x 64	(1) 4MB x 64
64MB	(1) 8MB x 64	None
72MB	(1) 8MB x 64	(1) 1MB x 64
80MB	(1) 8MB x 64	(1) 2MB x 64
96MB	(1) 8MB x 64	(1) 4MB x 64
128MB	(1) 8MB x 64	(1) 8MB x 64
128MB	(1) 16MB x 64	None
128MB	(1) 16MB x 64	(1) 16MB x 64
128MB	(1) 32MB x 64	None
128MB	(1) 32MB x 64	(1) 32MB x 64

Note: Only Bank 2 can be used in conjunction with SIMM memory.

DIMM VOLTAGE SELECTION		
Voltage	JP3A	JP3B
5V	Pins 1 & 2 closed	Pins 1 & 2 closed
3.3V	Pins 2 & 3 closed	Pins 2 & 3 closed