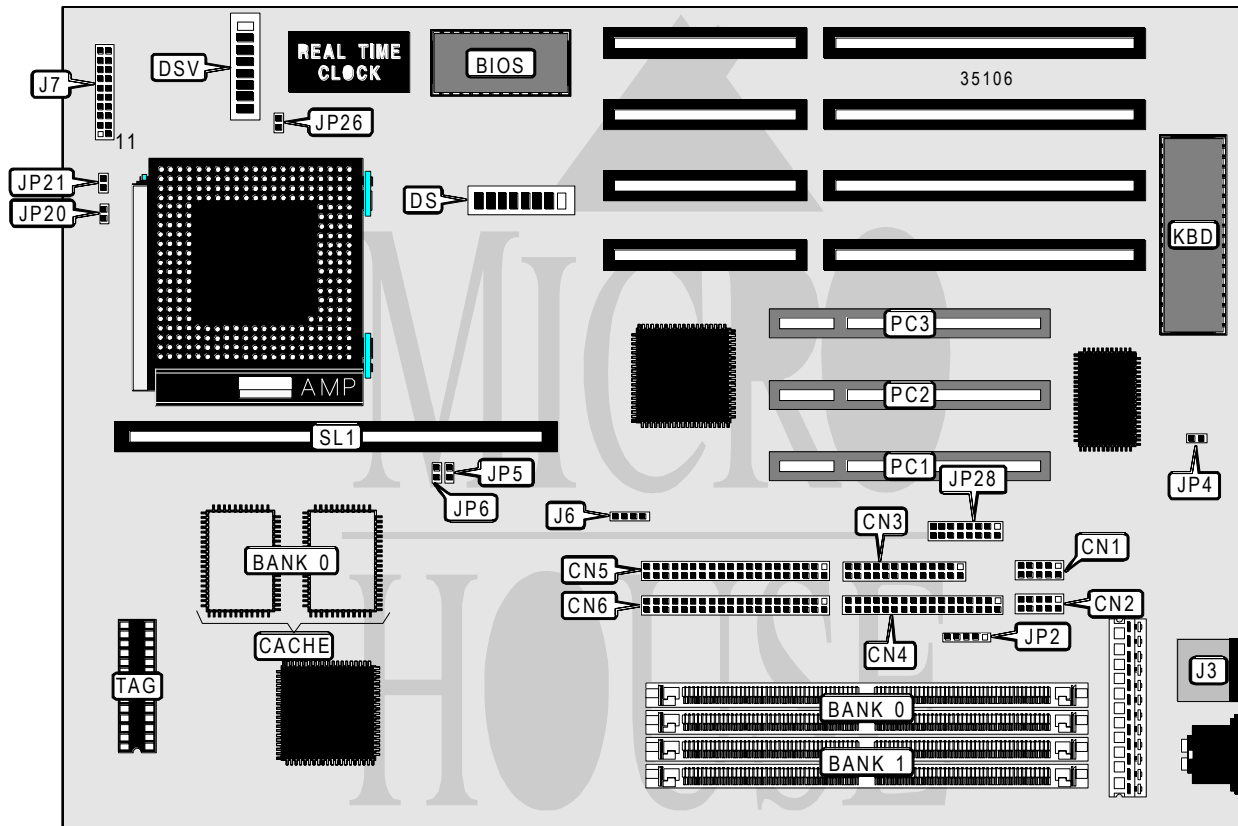


ABIT COMPUTER CORPORATION

PN5 (REV. 1.4)

Processor	CX M1/AM K5/Pentium
Processor Speed	75/90/100/120/133/150/166/200MHz
Chip Set	Intel
Video Chip Set	None
Maximum Onboard Memory	256MB (EDO supported)
Maximum Video Memory	None
Cache	256/512KB
BIOS	Award
Dimensions	330mm x 218mm
I/O Options	32-bit PCI slots (3), floppy drive interface, green PC connector, IDE interfaces (2), parallel port, PS/2 mouse port, serial ports (2), cache slot, IR connector, USB connector
NPU Options	None



Continued on next page. . .

ABIT COMPUTER CORPORATION

PN5 (REV. 1.4)

... continued from previous page

CONNECTIONS			
Purpose	Location	Purpose	Location
Serial port 2	CN1	Green PC connector	J7 pins 6 & 7
Serial port 1	CN2	Turbo LED	J7 pins 8 & 9
Parallel port	CN3	Speaker	J7 pins 11 - 14
Floppy drive interface	CN4	Power LED & keylock	J7 pins 16 - 20
IDE interface 2	CN5	IR connector	JP2
IDE interface 1	CN6	Chassis fan power	JP21
PS/2 mouse port	J3	USB connector	JP28
IDE interface LED	J6	32-bit PCI slots	PC1 - PC3
Reset switch	J7 pins 1 & 2	Cache slot	SL1

USER CONFIGURABLE SETTINGS		
Function	Label	Position
í On board I/O enabled	JP4	Open
On board I/O disabled	JP4	Closed
í CMOS memory normal operation	JP26	Open
CMOS memory clear	JP26	Closed

DRAM CONFIGURATION		
Size	Bank 0	Bank 1
8MB	(2) 1M x 32	None
16MB	(2) 2M x 32	None
16MB	(2) 1M x 32	(2) 1M x 32
24MB	(2) 2M x 32	(2) 1M x 32
32MB	(2) 4M x 32	None
32MB	(2) 2M x 32	(2) 2M x 32
40MB	(2) 4M x 32	(2) 1M x 32
48MB	(2) 4M x 32	(2) 2M x 32
64MB	(2) 8M x 32	None
64MB	(2) 4M x 32	(2) 4M x 32
72MB	(2) 8M x 32	(2) 1M x 32
80MB	(2) 8M x 32	(2) 2M x 32
96MB	(2) 8M x 32	(2) 4M x 32
128MB	(2) 8M x 32	(2) 8M x 32
128MB	(2) 16M x 32	None
136MB	(2) 16M x 32	(2) 1M x 32
144MB	(2) 16M x 32	(2) 2M x 32
160MB	(2) 16M x 32	(2) 4M x 32
192MB	(2) 16M x 32	(2) 8M x 32
256MB	(2) 16M x 32	(2) 16M x 32

Note: Board accepts EDO memory. Banks are interchangeable.

Continued on next page. . .

ABIT COMPUTER CORPORATION

PN5 (REV. 1.4)

... continued from previous page

DRAM REFRESH RATE CONFIGURATION	
Setting	DS/6
60MHz	On
í 66MHz	Off

CACHE CONFIGURATION			
Size	Bank 0	SL1	TAG
256KB	(2) 32K x 32	Not installed	(1) 32K x 8
512KB	(2) 32K x 32	256KB module installed	(1) 32K x 8

CACHE JUMPER CONFIGURATION			
Size	JP5	JP6	JP20
256KB	Open	Open	Open
512KB	Closed	Closed	Closed

CPU SPEED SELECTION (CYRIX)						
CPU speed	Clock speed	Multiplier	DS/1	DS/2	DS/3	DS/4
120MHz	50MHz	2x	Off	On	On	On
133MHz	55MHz	2x	Off	On	Off	Off
150MHz	60MHz	2x	Off	On	Off	On
166MHz	66MHz	2x	Off	On	On	Off
200MHz	75MHz	2x	Off	On	Off	Off

CPU SPEED SELECTION (CYRIX)					
CPU speed	Clock speed	Multiplier	DS/5	DS/7 (normal)	DS/7 (turbo)
120MHz	50MHz	2x	Off	Off	On
133MHz	55MHz	2x	On	Off	N/A
150MHz	60MHz	2x	On	Off	On
166MHz	66MHz	2x	On	Off	On
200MHz	75MHz	2x	On	On	N/A

CPU SPEED SELECTION (AMD)						
CPU speed	Clock speed	Multiplier	DS/1	DS/2	DS/3	DS/4
75MHz	50MHz	1.5x	Off	Off	On	On
90MHz	60MHz	1.5x	Off	Off	Off	On
100MHz	66MHz	1.5x	Off	Off	On	Off
120MHz	60MHz	1.5x	Off	Off	Off	On
133MHz	66MHz	1.5x	Off	Off	On	Off
150MHz	60MHz	2x	Off	On	Off	On
166MHz	66MHz	2x	Off	On	On	Off

Continued on next page. . .

ABIT COMPUTER CORPORATION

PN5 (REV. 1.4)

... continued from previous page

CPU SPEED SELECTION (AMD, CON'T)

CPU speed	Clock speed	Multiplier	DS/5	DS/7 (normal)	DS/7 (turbo)
75MHz	50MHz	1.5x	Off	Off	On
90MHz	60MHz	1.5x	On	Off	On
100MHz	66MHz	1.5x	On	Off	On
120MHz	60MHz	1.5x	On	Off	On
133MHz	66MHz	1.5x	On	Off	On
150MHz	60MHz	2x	On	Off	On
166MHz	66MHz	2x	On	Off	On

CPU SPEED SELECTION (INTEL)

CPU speed	Clock speed	Multiplier	DS/1	DS/2	DS/3	DS/4
75MHz	50MHz	1.5x	Off	Off	On	On
90MHz	60MHz	1.5x	Off	Off	Off	On
100MHz	66MHz	1.5x	Off	Off	On	Off
120MHz	60MHz	2x	Off	On	Off	On
133MHz	66MHz	2x	Off	On	On	Off
150MHz	60MHz	2.5x	On	On	Off	On
166MHz	66MHz	2.5x	On	On	On	Off
200MHz	66MHz	3x	On	Off	On	Off

CPU SPEED SELECTION (INTEL, CON'T)

CPU speed	Clock speed	Multiplier	DS/5	DS/7 (normal)	DS/7 (turbo)
75MHz	50MHz	1.5x	Off	Off	On
90MHz	60MHz	1.5x	On	Off	On
100MHz	66MHz	1.5x	On	Off	On
120MHz	60MHz	2x	On	Off	On
133MHz	66MHz	2x	On	Off	On
150MHz	60MHz	2.5x	On	Off	On
166MHz	66MHz	2.5x	On	Off	On
200MHz	66MHz	3x	On	Off	On

CPU VOLTAGE SELECTION

Voltage	DSV/1	DSV/2	DSV/3	DSV/4	DSV/5	DSV/6	DSV/7	DSV/8
2.5v	Off	Off	Off	Off	Off	On	On	Off
2.7v	Off	Off	Off	Off	On	Off	On	Off
2.8v	Off	Off	Off	On	Off	Off	On	Off
2.9v	Off	Off	On	Off	Off	Off	On	Off
3.38v	Off	On	Off	Off	Off	Off	On	Off
3.52v	On	Off	Off	Off	Off	Off	Off	On