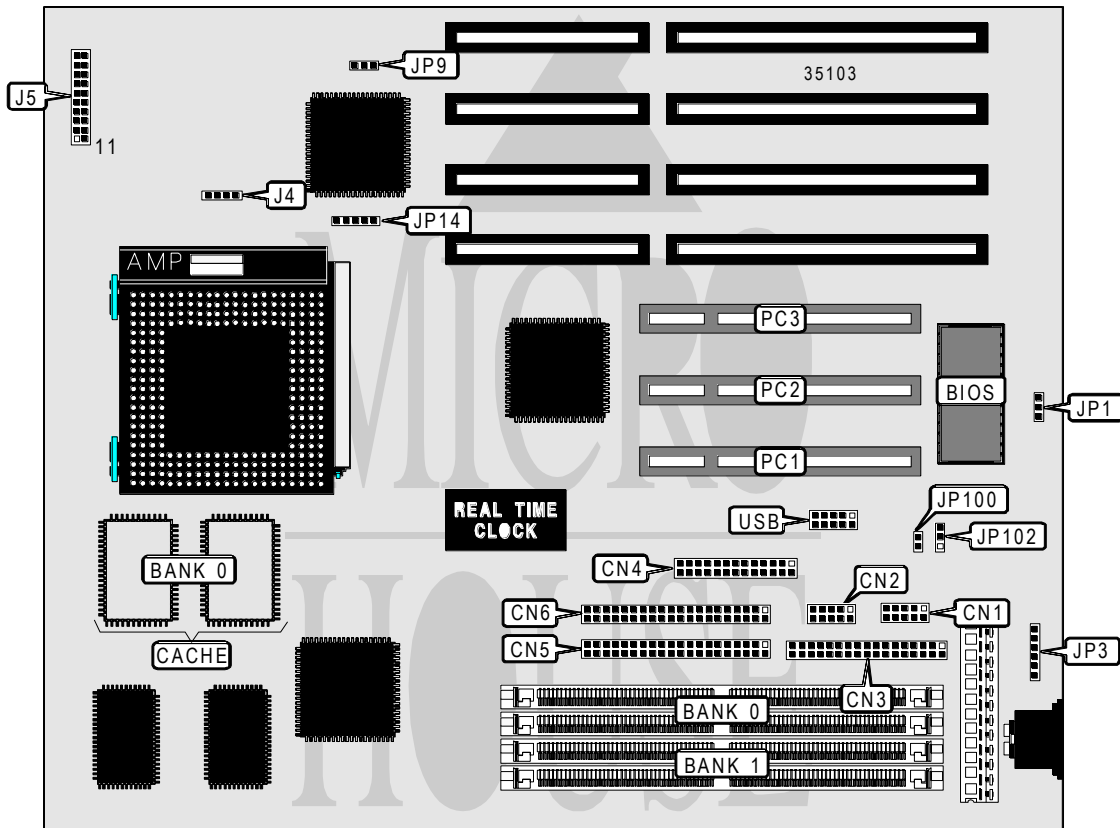


ABIT COMPUTER CORPORATION

SM5 - A

Processor	CX M1/AM K5/Pentium
Processor Speed	75/90/100/120/133/150/166/180/200MHz
Chip Set	Intel
Video Chip Set	None
Maximum Onboard Memory	128MB (EDO supported)
Maximum Video Memory	None
Cache	256/512KB
BIOS	Award
Dimensions	254mm x 218mm
I/O Options	32-bit PCI slots (3), floppy drive interface, green PC connector, IDE interfaces (2), parallel port, PS/2 mouse interface, serial ports (2), IR connector, USB connector
NPU Options	None



Continued on next page. . .

ABIT COMPUTER CORPORATION

SM5 - A

... continued from previous page

CONNECTIONS			
Purpose	Location	Purpose	Location
Serial port 1	CN1	Speaker	J5 pins 11 - 14
Serial port 2	CN2	Power LED & keylock	J5 pins 16 - 20
Floppy drive interface	CN3	PS/2 mouse interface	JP3
Parallel port	CN4	Chassis fan power	JP9
IDE interface 1	CN5	IR connector	JP14
IDE interface 2	CN6	Green PC connector	JP100
IDE interface LED	J4	Power control connector	JP102
Reset switch	J5 pins 1 & 2	32-bit PCI slots	PC1 – PC3
Green PC connector	J5 pins 6 & 7	USB connector	USB
Turbo LED	J5 pins 8 & 9		

USER CONFIGURABLE SETTINGS		
Function	Label	Position
? CMOS memory normal operation	JP1	Pins 1 & 2 closed
CMOS memory clear	JP1	Pins 2 & 3 closed

DRAM CONFIGURATION		
Size	Bank 0	Bank 1
8MB	(2) 1M x 32	None
16MB	(2) 2M x 32	None
16MB	(2) 1M x 32	(2) 1M x 32
24MB	(2) 2M x 32	(2) 1M x 32
32MB	(2) 4M x 32	None
32MB	(2) 2M x 32	(2) 2M x 32
40MB	(2) 4M x 32	(2) 1M x 32
48MB	(2) 4M x 32	(2) 2M x 32
64MB	(2) 8M x 32	None
64MB	(2) 4M x 32	(2) 4M x 32
72MB	(2) 8M x 32	(2) 1M x 32
80MB	(2) 8M x 32	(2) 2M x 32
96MB	(2) 8M x 32	(2) 4M x 32
128MB	(2) 8M x 32	(2) 8M x 32

Note: Board accepts EDO memory.

CACHE CONFIGURATION	
Size	Bank 0
256KB	(2) 32K x 32
512KB	(2) 64K x 32

CPU SELECTION
Note: CPU speed and voltage are set through CPU Soft menu. The menu is accessed through the BIOS.