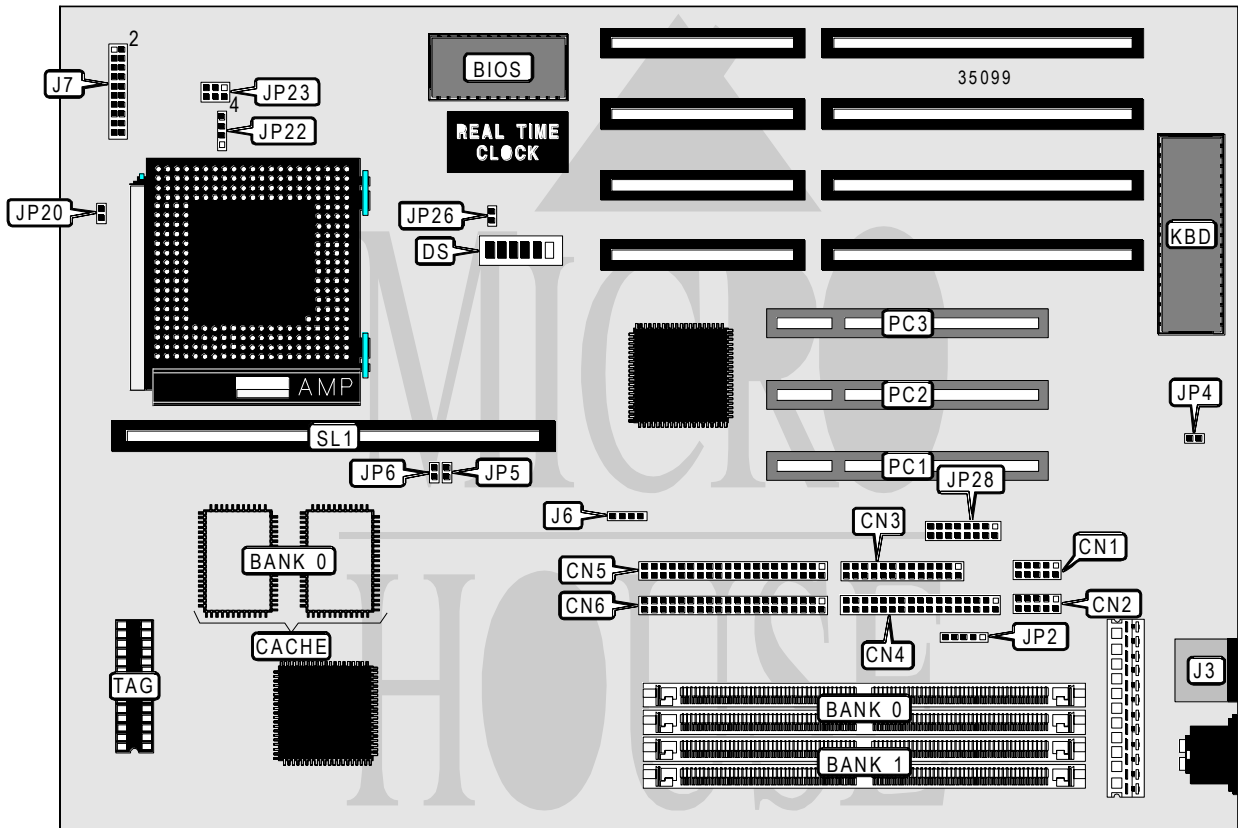


# ABIT COMPUTER CORPORATION PN5 PCI (REV. 1.2)

<b>Processor</b>	CX M1/AM K5/Pentium
<b>Processor Speed</b>	75/90/100/120/133/150/166/180/200MHz
<b>Chip Set</b>	Intel
<b>Video Chip Set</b>	None
<b>Maximum Onboard Memory</b>	256MB (EDO supported)
<b>Maximum Video Memory</b>	None
<b>Cache</b>	256/512KB
<b>BIOS</b>	Award
<b>Dimensions</b>	330mm x 218mm
<b>I/O Options</b>	32-bit PCI slots (3), floppy drive interface, green PC connector, IDE interfaces (2), parallel port, PS/2 mouse port, serial ports (2), cache slot, IR connector, USB connector
<b>NPU Options</b>	None



*Continued on next page...*

# ABIT COMPUTER CORPORATION

## PN5 PCI (REV. 1.2)

... continued from previous page

CONNECTIONS			
Purpose	Location	Purpose	Location
Serial port 2	CN1	Turbo LED	J7 pins 4 & 6
Serial port 1	CN2	Green PC connector	J7 pins 8 & 10
Parallel port	CN3	Speaker	J7 pins 14/15/17/19
Floppy drive interface	CN4	Reset switch	J7 pins 18 & 20
IDE interface 2	CN5	IR connector	JP2
IDE interface 1	CN6	USB connector	JP28
PS/2 mouse port	J3	32-bit PCI slots	PC1 - PC3
IDE interface LED	J6	Cache slot	SL1
Power LED & keylock	J7 pins 1/3/5/7/9		

USER CONFIGURABLE SETTINGS		
Function	Label	Position
í On board I/O enabled	JP4	Open
On board I/O disabled	JP4	Closed
í CMOS memory normal operation	JP26	Open
CMOS memory clear	JP26	Closed

DRAM CONFIGURATION		
Size	Bank 0	Bank 1
8MB	(2) 1M x 32	None
16MB	(2) 2M x 32	None
16MB	(2) 1M x 32	(2) 1M x 32
24MB	(2) 2M x 32	(2) 1M x 32
32MB	(2) 4M x 32	None
32MB	(2) 2M x 32	(2) 2M x 32
40MB	(2) 4M x 32	(2) 1M x 32
48MB	(2) 4M x 32	(2) 2M x 32
64MB	(2) 8M x 32	None
64MB	(2) 4M x 32	(2) 4M x 32
72MB	(2) 8M x 32	(2) 1M x 32
80MB	(2) 8M x 32	(2) 2M x 32
96MB	(2) 8M x 32	(2) 4M x 32
128MB	(2) 8M x 32	(2) 8M x 32
128MB	(2) 16M x 32	None
136MB	(2) 16M x 32	(2) 1M x 32
144MB	(2) 16M x 32	(2) 2M x 32
160MB	(2) 16M x 32	(2) 4M x 32
192MB	(2) 16M x 32	(2) 8M x 32
256MB	(2) 16M x 32	(2) 16M x 32

Note: Board accepts EDO memory. Banks are interchangeable.

Continued on next page...

# ABIT COMPUTER CORPORATION

## PN5 PCI (REV. 1.2)

... continued from previous page

DRAM REFRESH RATE CONFIGURATION	
Setting	DS/1
60MHz	On
í 66MHz	Off

CACHE CONFIGURATION			
Size	Bank 0	SL1	TAG
256KB	(2) 32K x 32	Not installed	(1) 32K x 8
512KB	(2) 32K x 32	256KB module installed	(1) 32K x 8

CACHE JUMPER CONFIGURATION			
Size	JP5	JP6	JP20
256KB	Open	Open	Open
512KB	Closed	Closed	Closed

CPU SPEED SELECTION (CYRIX)							
CPU speed	Clock speed	Multiplier	DS/2	DS/3	DS/4	DS/5	DS/6
120MHz	50MHz	2x	Off	On	On	On	Off
133MHz	55MHz	2x	On	Off	Off	On	Off
150MHz	60MHz	2x	On	On	Off	On	Off
166MHz	66MHz	2x	On	Off	On	On	Off

CPU SPEED SELECTION (AMD)								
CPU speed	CPU type	Clock speed	Multiplier	DS/2	DS/3	DS/4	DS/5	DS/6
75MHz	SSA/5	50MHz	1.5x	Off	On	On	Off	Off
75MHz	SSA/5	66MHz	1x	On	Off	On	On	Off
90MHz	SSA/5	55MHz	1.5x	On	Off	Off	Off	Off
90MHz	SSA/5	60MHz	1.5x	On	On	Off	Off	Off
100MHz	SSA/5	66MHz	1.5x	On	Off	On	Off	Off
100MHz	K5	55MHz	1.5x	On	Off	Off	Off	Off
100MHz	K5	50MHz	1.5x	Off	On	On	Off	Off
120MHz	K5	60MHz	1.5x	On	On	Off	Off	Off
133MHz	K5	66MHz	1.5x	On	Off	On	Off	Off
150MHz	K5	60MHz	2x	On	On	Off	On	Off
166MHz	K5	66MHz	2x	On	Off	On	On	Off

Continued on next page...

# ABIT COMPUTER CORPORATION

## PN5 PCI (REV. 1.2)

... continued from previous page

CPU SPEED SELECTION (INTEL)							
CPU speed	Clock speed	Multiplier	DS/2	DS/3	DS/4	DS/5	DS/6
75MHz	50MHz	1.5x	Off	On	On	Off	Off
90MHz	60MHz	1.5x	On	On	Off	Off	Off
100MHz	66MHz	1.5x	On	Off	On	Off	Off
120MHz	60MHz	2x	On	On	Off	On	Off
133MHz	66MHz	2x	On	Off	On	On	Off
150MHz	60MHz	2.5x	On	On	Off	On	On
166MHz	66MHz	2.5x	On	Off	On	On	On
180MHz	60MHz	3x	On	On	Off	Off	On
200MHz	66MHz	3x	On	Off	On	Off	On

CPU VOLTAGE SELECTION		
Voltage	JP22	JP23
3.38v (STD/VR)	Open	Pins 3 & 6 closed
3.52v (VRE)	Pins 1 - 4 closed	Pins 1 & 4 closed