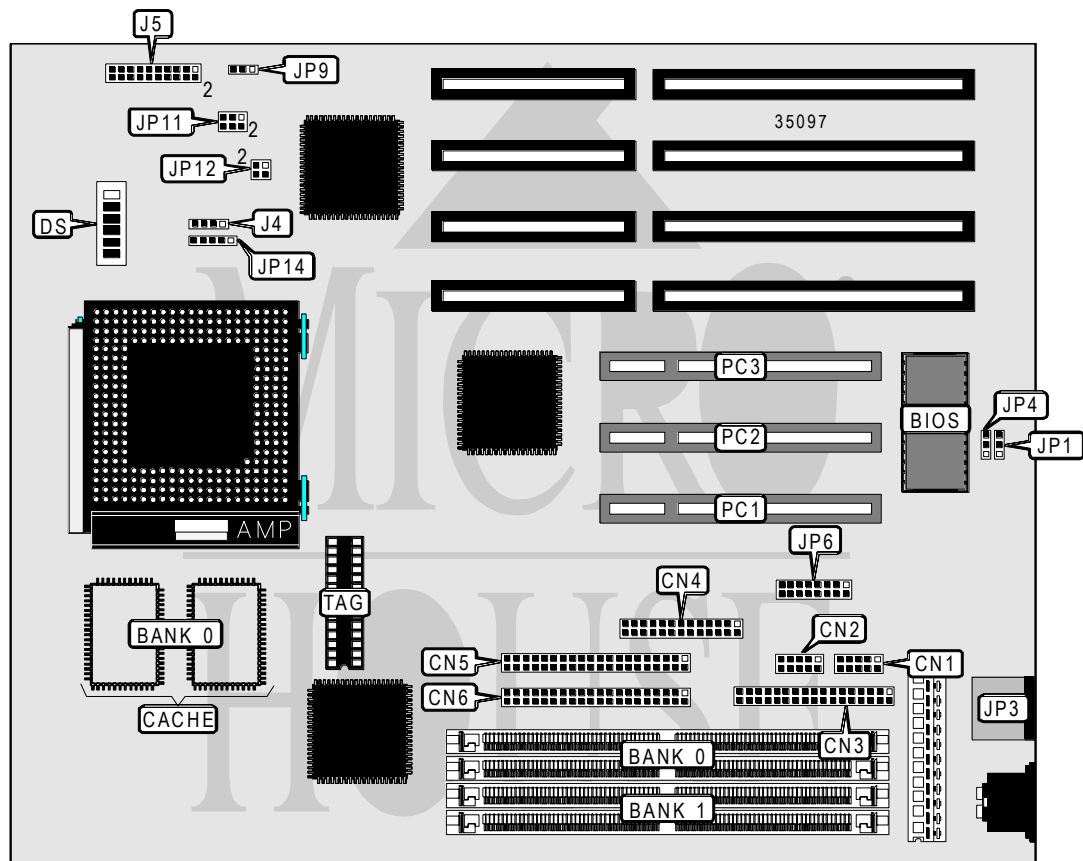


ABIT COMPUTER CORPORATION

PR5 R2 PCI (REV (2.01))

Processor	CX M1/AM K5/Pentium
Processor Speed	75/90/100/120/133/150/166/200MHz
Chip Set	Intel
Video Chip Set	None
Maximum Onboard Memory	128MB (EDO supported)
Maximum Video Memory	None
Cache	256KB
BIOS	Award
Dimensions	330mm x 218mm
I/O Options	32-bit PCI slots (3), floppy drive interface, green PC connector, IDE interfaces (2), parallel port, PS/2 mouse port, serial ports (2), IR connector, USB connector
NPU Options	None



Continued on next page . . .

ABIT COMPUTER CORPORATION PR5 R2 PCI (REV (2.01))

... continued from previous page

CONNECTIONS			
Purpose	Location	Purpose	Location
Serial port 1	CN1	Green PC connector	J5 pins 7 - 9
Serial port 2	CN2	Speaker	J5 pins 14/16/18/20
Floppy drive interface	CN3	Reset switch	J5 pins 17 - 19
Parallel port	CN4	PS/2 mouse port	JP3
IDE interface 2	CN5	USB connector	JP6
IDE interface 1	CN6	Chassis fan power	JP9
IDE interface LED	J4	IR connector	JP14
Power LED & keylock	J5 pins 2/4/6/8/10	32-bit PCI slots	PC1 - PC3
Turbo LED	J5 pins 3 - 5		

USER CONFIGURABLE SETTINGS		
Function	Label	Position
í CMOS memory normal operation	JP1	Pins 1 & 2 closed
CMOS memory clear	JP1	Pins 2 & 3 closed
í Flash BIOS voltage select 12v	JP4	Pins 2 & 3 closed
Flash BIOS voltage select 5v	JP4	Pins 1 & 2 closed

DRAM CONFIGURATION		
Size	Bank 0	Bank 1
8MB	(2) 1M x 32	None
16MB	(2) 2M x 32	None
16MB	(2) 1M x 32	(2) 1M x 32
24MB	(2) 2M x 32	(2) 1M x 32
32MB	(2) 4M x 32	None
32MB	(2) 2M x 32	(2) 2M x 32
40MB	(2) 4M x 32	(2) 1M x 32
48MB	(2) 4M x 32	(2) 2M x 32
64MB	(2) 8M x 32	None
64MB	(2) 4M x 32	(2) 4M x 32
72MB	(2) 8M x 32	(2) 1M x 32
80MB	(2) 8M x 32	(2) 2M x 32
96MB	(2) 8M x 32	(2) 4M x 32
128MB	(2) 8M x 32	(2) 8M x 32

Note: Board accepts EDO memory.

CACHE CONFIGURATION		
Size	Bank 0	TAG
256KB	(2) 32K x 32	(1) 32K x 8

Continued on next page...

ABIT COMPUTER CORPORATION

PR5 R2 PCI (REV (2.01))

... continued from previous page

CPU SPEED SELECTION (CYRIX)								
CPU speed	Clock speed	Multiplier	DS/1	DS/2	DS/3	DS/4	DS/5	DS/6
120MHz	50MHz	2x	Off	On	On	On	Off	Off
133MHz	55MHz	2x	Off	On	Off	Off	On	Off
150MHz	60MHz	2x	Off	On	Off	On	On	Off
166MHz	66MHz	2x	Off	On	On	Off	On	Off

CPU SPEED SELECTION (AMD)						
CPU speed	CPU type	Clock speed	Multiplier	DS/1	DS/2	DS/3
75MHz	SSA/5	50MHz	1.5x	Off	Off	On
75MHz	SSA/5	66MHz	1x	Off	On	On
90MHz	SSA/5	55MHz	1.5x	Off	Off	Off
90MHz	SSA/5	60MHz	1.5x	Off	Off	Off
100MHz	SSA/5	66MHz	1.5x	Off	Off	On
100MHz	K5	55MHz	1.5x	Off	Off	Off
100MHz	K5	50MHz	1.5x	Off	Off	On
120MHz	K5	60MHz	1.5x	Off	Off	Off
133MHz	K5	66MHz	1.5x	Off	Off	On
150MHz	K5	60MHz	2x	Off	On	Off
166MHz	K5	66MHz	2x	Off	On	On

CPU SPEED SELECTION (AMD, CON'T)						
CPU speed	CPU type	Clock speed	Multiplier	DS/4	DS/5	DS/6
75MHz	SSA/5	50MHz	1.5x	On	Off	Off
75MHz	SSA/5	66MHz	1x	Off	On	Off
90MHz	SSA/5	55MHz	1.5x	Off	On	Off
90MHz	SSA/5	60MHz	1.5x	On	On	Off
100MHz	SSA/5	66MHz	1.5x	Off	On	Off
100MHz	K5	55MHz	1.5x	Off	On	Off
100MHz	K5	50MHz	1.5x	On	Off	Off
120MHz	K5	60MHz	1.5x	On	On	Off
133MHz	K5	66MHz	1.5x	Off	On	Off
150MHz	K5	60MHz	2x	On	On	Off
166MHz	K5	66MHz	2x	Off	On	Off

Continued on next page...

ABIT COMPUTER CORPORATION

PR5 R2 PCI (REV (2.01))

... continued from previous page

CPU SPEED SELECTION (INTEL)								
CPU speed	Clock speed	Multiplier	DS/1	DS/2	DS/3	DS/4	DS/5	DS/6
75MHz	50MHz	1.5x	Off	Off	On	On	Off	Off
90MHz	60MHz	1.5x	Off	Off	Off	On	On	Off
100MHz	66MHz	1.5x	Off	Off	On	Off	On	Off
120MHz	60MHz	2x	Off	On	Off	On	On	Off
133MHz	66MHz	2x	Off	On	On	Off	On	Off
150MHz	60MHz	2.5x	On	On	Off	On	On	Off
166MHz	66MHz	2.5x	On	On	On	Off	On	Off
200MHz	66MHz	3x	On	Off	On	Off	On	Off

CPU VOLTAGE SELECTION		
Voltage	JP11	JP12
3.38v (STD/VR)	Pins 3 & 4 closed	Pins 1 & 2 closed
3.52v (VRE)	Pins 5 & 6 closed	Pins 3 & 4 closed