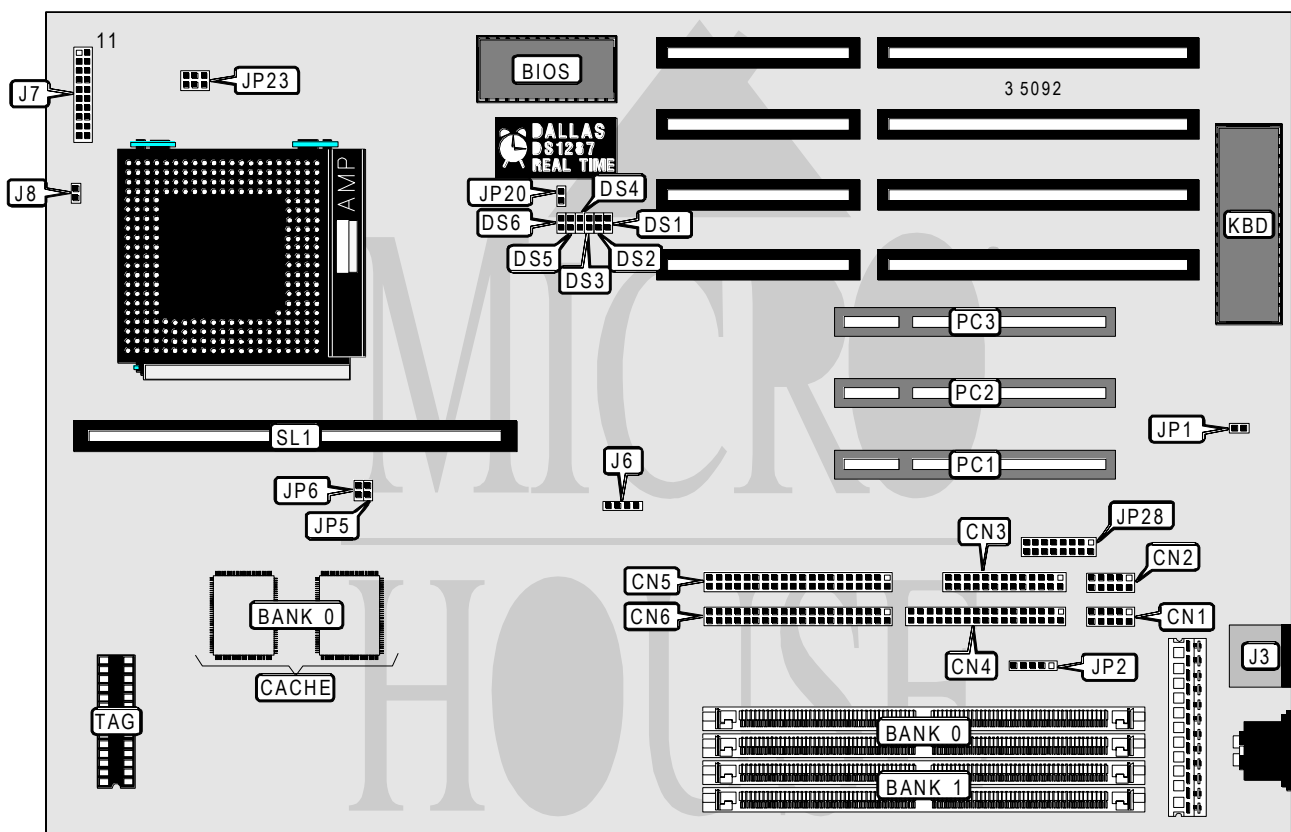


ABIT COMPUTER CORPORATION

P N 5

Processor	CX M1/Pentium
Processor Speed	75/90/100/120/133/150/166/180/200MHz
Chip Set	Unidentified
Maximum Onboard Memory	128MB
Cache	256/512KB
BIOS	Unidentified
Dimensions	330mm x 218mm
I/O Options	32-bit PCI slots (4), floppy drive interface, green PC connector, IDE interfaces (2), parallel port, PS/2 mouse port, serial ports (2), cache slot, IR connector, USB connector
NPU Options	None



CONNECTIONS			
Function	Label	Function	Label
Serial port 1	CN1	Speaker	J7 pins 7 - 10
Serial port 2	CN2	Reset switch	J7 pins 11 - 12
Parallel port	CN3	Green PC connector	J7 pins 14 - 15
Floppy drive interface	CN4	Turbo LED	J7 pins 16 & 17
IDE interface 2	CN5	Green PC LED	J8
IDE interface 1	CN6	IR connector	JP2
PS/2 mouse port	J3	USB connector	JP28
IDE interface LED	J6	32-bit PCI slots	PC1 - PC3
Power LED & keylock	J7 pins 1 - 5	Cache slot	SL1

Continued on next page. . .

ABIT COMPUTER CORPORATION

P N 5

... continued from previous page

USER CONFIGURABLE SETTINGS		
Setting	Label	Position
í DRAM refresh rate select 66MHz	DS1	Closed
DRAM refresh rate select 60MHz	DS1	Open
í Factory configured - do not alter	JP1	N/A

DRAM		
Size	Bank 0	Bank 1
2MB	(2) 256K x 36	None
4MB	(2) 512K x 36	None
4MB	(2) 256K x 36	(2) 256K x 36
6MB	(2) 512K x 36	(2) 256K x 36
6MB	(2) 256K x 36	(2) 512K x 36
8MB	(2) 1M x 36	None
8MB	(2) 512K x 36	(2) 512K x 36
10MB	(2) 1M x 36	(2) 256K x 36
10MB	(2) 256K x 36	(2) 1M x 36
12MB	(2) 1M x 36	(2) 512K x 36
12MB	(2) 512K x 36	(2) 1M x 36
16MB	(2) 2M x 36	None
16MB	(2) 1M x 36	(2) 1M x 36
18MB	(2) 2M x 36	(2) 256K x 36
18MB	(2) 256K x 36	(2) 2M x 36
20MB	(2) 2M x 36	(2) 512K x 36
20MB	(2) 512K x 36	(2) 2M x 36
24MB	(2) 2M x 36	(2) 1M x 36
24MB	(2) 1M x 36	(2) 2M x 36
32MB	(2) 4M x 36	None
32MB	(2) 2M x 36	(2) 2M x 36
34MB	(2) 4M x 36	(2) 256K x 36
34MB	(2) 256K x 36	(2) 4M x 36
36MB	(2) 4M x 36	(2) 512K x 36
36MB	(2) 512K x 36	(2) 4M x 36
40MB	(2) 4M x 36	(2) 1M x 36
40MB	(2) 1M x 36	(2) 4M x 36
48MB	(2) 4M x 36	(2) 2M x 36
48MB	(2) 2M x 36	(2) 4M x 36
64MB	(2) 8M x 36	None
64MB	(2) 4M x 36	(2) 4M x 36
66MB	(2) 8M x 36	(2) 256K x 36
66MB	(2) 256K x 36	(2) 8M x 36
68MB	(2) 8M x 36	(2) 512K x 36
68MB	(2) 512K x 36	(2) 8M x 36

Continued on next page...

ABIT COMPUTER CORPORATION

P N 5

... continued from previous page

DRAM (CON'T)		
Size	Bank 0	Bank 1
72MB	(2) 8M x 36	(2) 1M x 36
72MB	(2) 1M x 36	(2) 8M x 36
80MB	(2) 8M x 36	(2) 2M x 36
80MB	(2) 2M x 36	(2) 8M x 36
96MB	(2) 8M x 36	(2) 4M x 36
96MB	(2) 4M x 36	(2) 8M x 36
128MB	(2) 8M x 36	(2) 8M x 36

CACHE SIZE			
Size	Bank 0	SL1	TAG
256KB	(2) 32K x 32	Not installed	(1) 32K x 8
512KB	(2) 32K x 32	Installed	(1) 32K x 8

Note: Bank 0 is factory installed and is not configurable.

CACHE JUMPER			
Size	JP5	JP6	JP20
256KB	Open	Open	Open
512KB	Closed	Closed	Closed

CPU SPEED (PENTIUM)					
Setting	DS2	DS3	DS4	DS5	DS6
75MHz	Open	Closed	Closed	Open	Open
90MHz	Closed	Closed	Open	Open	Open
100MHz	Closed	Open	Closed	Open	Open
120MHz	Closed	Closed	Open	Closed	Open
133MHz	Closed	Open	Closed	Closed	Open
150MHz	Closed	Closed	Open	Closed	Closed
166MHz	Closed	Open	Closed	Closed	Closed
180MHz	Closed	Closed	Open	Open	Closed
200MHz	Closed	Open	Closed	Open	Closed

CPU SPEED (CYRIX)					
Setting	DS2	DS3	DS4	DS5	DS6
120MHz	Open	Closed	Closed	Closed	Open
133MHz	Closed	Open	Open	Closed	Open
150MHz	Closed	Closed	Open	Closed	Open
166MHz	Open	Open	Closed	Closed	Open

CPU VOLTAGE	
Setting	JP23
3.3v	Pins 2 & 5 closed
3.45v	Pins 3 & 6 closed
3.6v	Pins 1 & 4 closed

Note: The location of pin 1 is unidentified.