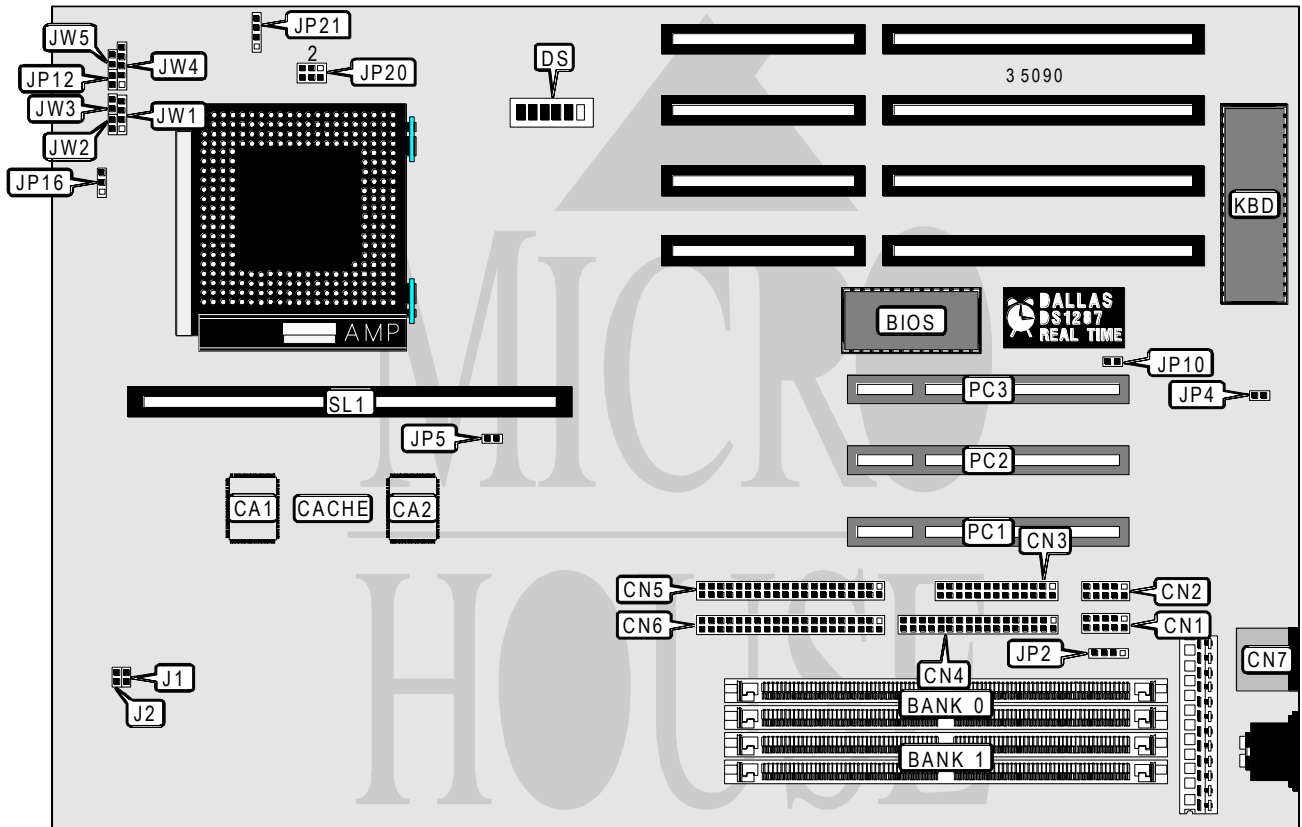


# ABIT COMPUTER CORPORATION PT5 R2 PCI

<b>Processor</b>	CX6X86/AM K5/Pentium
<b>Processor Speed</b>	75/90/100/120/133/150/166/180/200MHz
<b>Chip Set</b>	Intel
<b>Max. Onboard DRAM</b>	128MB
<b>Cache</b>	256/512KB
<b>BIOS</b>	Award
<b>Dimensions</b>	330mm x 218mm
<b>I/O Options</b>	32-bit PCI slots (3), floppy drive interface, green PC connector, IDE interfaces (2), parallel port, PS/2 mouse port, serial ports (2), cache slot, IR connector
<b>NPU Options</b>	None



CONNECTIONS			
Purpose	Location	Purpose	Location
Serial port 1	CN1	IDE interface LED	JP21
Serial port 2	CN2	Speaker	JW1
Parallel port	CN3	Reset switch	JW2
Floppy drive interface	CN4	Turbo switch	JW3
IDE interface 2	CN5	Power LED & keylock	JW4
IDE interface 1	CN6	Turbo LED	JW5
PS/2 mouse port	CN7	32-bit PCI slots	PC1 - PC3
IR connector	JP2	Cache slot	SL1
Green PC connector	JP12		

Continued on next page. . .

# ABIT COMPUTER CORPORATION

## PT5 R2 PCI

... continued from previous page

USER CONFIGURABLE SETTINGS		
Function	Jumper	Position
í Factory configured - do not alter	J1	Open
í On board I/O enabled	JP4	Open
On board I/O disabled	JP4	Closed
í Factory configured - do not alter	JP5	Open
í CMOS memory normal operation	JP10	Open
CMOS memory clear	JP10	Closed
í Factory configured - do not alter	JP16	Open

DRAM CONFIGURATION		
Size	Bank 0	Bank 1
8MB	(2) 1M x 32	NONE
8MB	(2) 512K x 32	(2) 512K x 32
10MB	(2) 1M x 32	(2) 256K x 32
10MB	(2) 256K x 32	(2) 1M x 32
12MB	(2) 1M x 32	(2) 512K x 32
12MB	(2) 512K x 32	(2) 1M x 32
16MB	(2) 2M x 32	NONE
16MB	(2) 1M x 32	(2) 1M x 32
18MB	(2) 2M x 32	(2) 256K x 32
18MB	(2) 256K x 32	(2) 2M x 32
20MB	(2) 2M x 32	(2) 512K x 32
20MB	(2) 512K x 32	(2) 2M x 32
24MB	(2) 2M x 32	(2) 1M x 32
24MB	(2) 1M x 32	(2) 2M x 32
32MB	(2) 4M x 32	NONE
32MB	(2) 2M x 32	(2) 2M x 32
34MB	(2) 4M x 32	(2) 256K x 32
34MB	(2) 256K x 32	(2) 4M x 32
36MB	(2) 4M x 32	(2) 512K x 32
36MB	(2) 512K x 32	(2) 4M x 32
40MB	(2) 4M x 32	(2) 1M x 32
40MB	(2) 1M x 32	(2) 4M x 32
48MB	(2) 4M x 32	(2) 2M x 32
48MB	(2) 2M x 32	(2) 4M x 32
64MB	(2) 8M x 32	NONE
64MB	(2) 4M x 32	(2) 4M x 32
66MB	(2) 8M x 32	(2) 256K x 32
66MB	(2) 256K x 32	(2) 8M x 32
68MB	(2) 8M x 32	(2) 512K x 32
68MB	(2) 512K x 32	(2) 8M x 32
72MB	(2) 8M x 32	(2) 1M x 32
72MB	(2) 1M x 32	(2) 8M x 32

Continued on next page...

# ABIT COMPUTER CORPORATION

## PT5 R2 PCI

... continued from previous page

DRAM CONFIGURATION (CON'T)		
Size	Bank 0	Bank 1
80MB	(2) 8M x 32	(2) 2M x 32
80MB	(2) 2M x 32	(2) 8M x 32
96MB	(2) 8M x 32	(2) 4M x 32
96MB	(2) 4M x 32	(2) 8M x 32
128MB	(2) 8M x 32	(2) 8M x 32

Note: This board supports fast page and EDO DRAM.

CACHE CONFIGURATION		
Size	CA1 & CA2	SL1
256KB	(2) 32K x 32	Not installed
512KB	(2) 32K x 32	Installed

CACHE SWITCH CONFIGURATION		
Size	DS/1	
256KB	Off	
512KB	On	

CPU TYPE CONFIGURATION		
Type	J2	
Cyrix	Closed	
Intel	Open	

CPU SPEED CONFIGURATION (CYRIX)					
Speed	DS/2	DS/3	DS/4	DS/5	DS/6
120MHz	Off	On	On	Off	Off
133MHz	On	Off	Off	Off	Off
150MHz	On	On	Off	Off	Off
166MHz	On	Off	On	Off	Off

CPU SPEED CONFIGURATION (AMD)						
Speed	Ext clock	DS/2	DS/3	DS/4	DS/5	DS/6
75MHz	50MHz	Off	On	On	Off	Off
75MHz	66MHz	On	Off	On	On	Off
90MHz	55MHz	On	Off	Off	Off	Off
90MHz	60MHz	On	On	Off	Off	Off
100MHz	66MHz	On	Off	On	Off	Off
100MHz	55MHz	On	Off	Off	Off	Off
100MHz	50MHz	Off	On	On	Off	Off
120MHz	60MHz	On	On	Off	Off	Off
133MHz	66MHz	On	Off	On	Off	Off
150MHz	60MHz	On	On	Off	On	Off
166MHz	66MHz	On	Off	On	On	Off

Continued on next page. . .

# ABIT COMPUTER CORPORATION

## PT5 R2 PCI

... continued from previous page

CPU SPEED CONFIGURATION (INTEL)					
Speed	DS/2	DS/3	DS/4	DS/5	DS/6
75MHz	Off	On	On	Off	Off
90MHz	On	On	Off	Off	Off
100MHz	On	Off	On	Off	Off
120MHz	On	On	Off	On	Off
133MHz	On	Off	On	On	Off
150MHz	On	On	Off	On	On
166MHz	On	Off	On	On	On
180MHz	On	On	Off	Off	On
200MHz	On	Off	On	Off	On

CPU VOLTAGE CONFIGURATION	
Voltage	JP20
3.3v	pins 3 & 6 closed
3.45v	pins 2 & 5 closed
3.6v	pins 1 & 4 closed