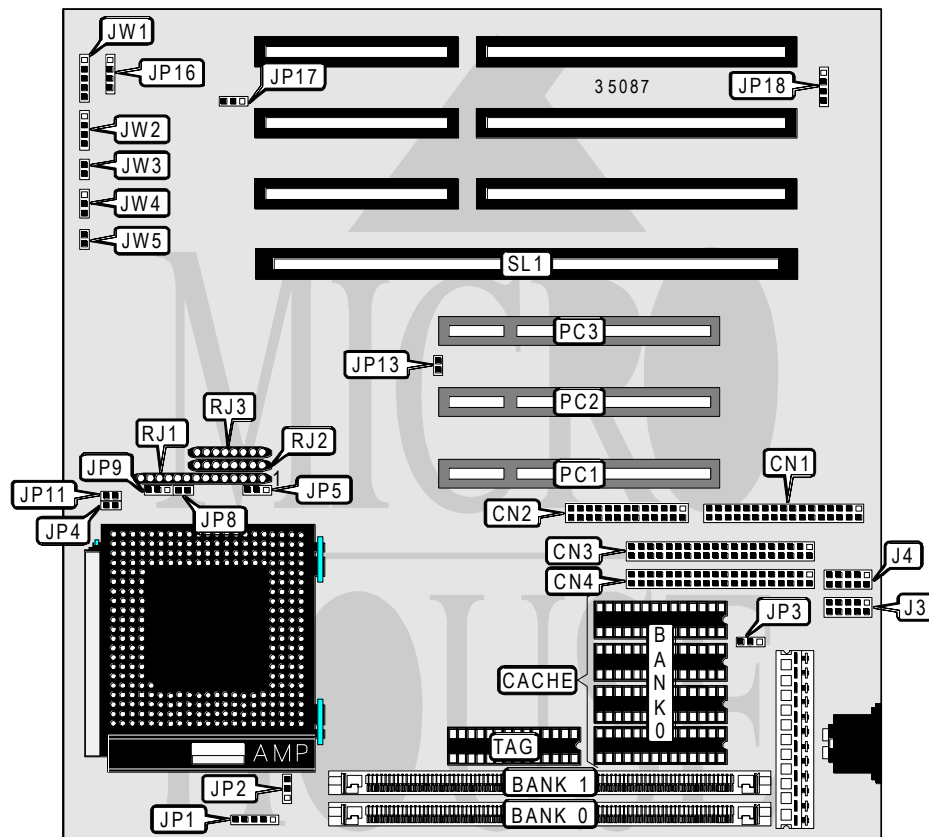


ABIT COMPUTER CORPORATION P B 4 (R E V . 1 . 1)

| | |
|--------------------------|---|
| Processor | 80486SX/SL AM486DX/80486DX/CX486DX2/AM486DX2/80486DX2/ CX486DX4/80486DX4/CX M1/P24D/Pentium Overdrive |
| Processor Speed | 25/33/40/50(internal)/66(internal)/75(internal)/80(internal)/100(internal)/ 120(internal)MHz |
| Chip Set | Unidentified |
| Max. Onboard DRAM | 64MB |
| Cache | 128/256KB |
| BIOS | Award |
| Dimensions | 220mm x 220mm |
| I/O Options | 32-bit PCI slots (3), floppy drive interface, green PC connector, IDE interfaces (2), parallel port, serial ports (2), PISA slot |
| NPU Options | None |



| CONNECTIONS | | | |
|------------------------|----------|---------------------|-----------|
| Purpose | Location | Purpose | Location |
| Floppy drive interface | CN1 | Power LED & keylock | JW1 |
| Parallel port | CN2 | Speaker | JW2 |
| IDE interface 2 | CN3 | Turbo LED | JW3 |
| IDE interface 1 | CN4 | Turbo switch | JW4 |
| Serial port 2 | J3 | Reset switch | JW5 |
| Serial port 1 | J4 | 32-bit PCI slots | PC1 - PC3 |
| IDE interface LED | JP16 | PISA slot | SL1 |
| External battery | JP18 | | |

Continued on next page. . .

ABIT COMPUTER CORPORATION

P B 4 (R E V . 1 . 1)

... continued from previous page

| USER CONFIGURABLE SETTINGS | | |
|-------------------------------------|--------|-------------------|
| Function | Jumper | Position |
| í Factory configured - do not alter | JP12 | pins 1 & 2 closed |
| í Factory configured - do not alter | JP13 | Open |
| í Factory configured - do not alter | JP14 | Open |
| í CMOS memory normal operation | JP17 | pins 1 & 2 closed |
| CMOS memory clear | JP17 | pins 2 & 3 closed |

Note: The location of jumpers JP12 and JP14 are unidentified.

| DRAM CONFIGURATION | | |
|--------------------|---------------|---------------|
| Size | Bank 0 | Bank 1 |
| 1MB | (1) 256K x 36 | NONE |
| 2MB | (1) 512K x 36 | NONE |
| 2MB | (1) 256K x 36 | (1) 256K x 36 |
| 3MB | (1) 256K x 36 | (1) 512K x 36 |
| 3MB | (1) 512K x 36 | (1) 256K x 36 |
| 4MB | (1) 1M x 36 | NONE |
| 4MB | (1) 512K x 36 | (1) 512K x 36 |
| 5MB | (1) 256K x 36 | (1) 1M x 36 |
| 5MB | (1) 1M x 36 | (1) 256K x 36 |
| 6MB | (1) 512K x 36 | (1) 1M x 36 |
| 6MB | (1) 1M x 36 | (1) 512K x 36 |
| 8MB | (1) 2M x 36 | NONE |
| 8MB | (1) 1M x 36 | (1) 1M x 36 |
| 9MB | (1) 256K x 36 | (1) 2M x 36 |
| 9MB | (1) 2M x 36 | (1) 256K x 36 |
| 10MB | (1) 512K x 36 | (1) 2M x 36 |
| 10MB | (1) 2M x 36 | (1) 512K x 36 |
| 12MB | (1) 1M x 36 | (1) 2M x 36 |
| 12MB | (1) 2M x 36 | (1) 1M x 36 |
| 16MB | (1) 4M x 36 | NONE |
| 16MB | (1) 2M x 36 | (1) 2M x 36 |
| 17MB | (1) 256K x 36 | (1) 4M x 36 |
| 17MB | (1) 4M x 36 | (1) 256K x 36 |
| 18MB | (1) 512K x 36 | (1) 4M x 36 |
| 18MB | (1) 4M x 36 | (1) 512K x 36 |
| 20MB | (1) 1M x 36 | (1) 4M x 36 |
| 20MB | (1) 4M x 36 | (1) 1M x 36 |
| 24MB | (1) 2M x 36 | (1) 4M x 36 |
| 24MB | (1) 4M x 36 | (1) 2M x 36 |
| 32MB | (1) 8M x 36 | NONE |
| 32MB | (1) 4M x 36 | (1) 4M x 36 |
| 33MB | (1) 256K x 36 | (1) 8M x 36 |
| 33MB | (1) 8M x 36 | (1) 256K x 36 |

Continued on next page...

ABIT COMPUTER CORPORATION

PB4 (REV.1.1)

... continued from previous page

| DRAM CONFIGURATION (CON'T) | | |
|----------------------------|---------------|---------------|
| Size | Bank 0 | Bank 1 |
| 34MB | (1) 512K x 36 | (1) 8M x 36 |
| 34MB | (1) 8M x 36 | (1) 512K x 36 |
| 36MB | (1) 1M x 36 | (1) 8M x 36 |
| 36MB | (1) 8M x 36 | (1) 1M x 36 |
| 40MB | (1) 2M x 36 | (1) 8M x 36 |
| 40MB | (1) 8M x 36 | (1) 2M x 36 |
| 48MB | (1) 4M x 36 | (1) 8M x 36 |
| 48MB | (1) 8M x 36 | (1) 4M x 36 |
| 64MB | (1) 8M x 36 | (1) 8M x 36 |

| CACHE CONFIGURATION | | |
|---------------------|-------------|------------------------|
| Size | Bank 0 | TAG |
| 128KB | (4) 32K x 8 | (1) 16K or (1) 32K x 8 |
| 256KB | (4) 64K x 8 | (1) 16K or (1) 32K x 8 |

| CACHE JUMPER CONFIGURATION | |
|----------------------------|-------------------|
| Size | JP3 |
| 128KB | pins 1 & 2 closed |
| 256KB | pins 2 & 3 closed |

| CPU TYPE CONFIGURATION | | | |
|------------------------|-------------------|--------|-------------------|
| Type | JP5 | JP8 | JP9 |
| 80486SX | Open | Open | Open |
| SL AM486DX | pins 2 & 3 closed | Open | pins 1 & 2 closed |
| 80486DX | Open | Open | Open |
| CX486DX2 | pins 1 & 2 closed | Open | pins 2 & 3 closed |
| AM486DX2 | Open | Closed | Open |
| 80486DX2 | Open | Open | Open |
| CX486DX4 | pins 1 & 2 closed | Open | pins 2 & 3 closed |
| AM486DX4 | Open | Open | Open |
| 80486DX4 | Open | Open | Open |
| CX M1 | pins 2 & 3 closed | Open | pins 1 & 2 closed |
| P24D | pins 2 & 3 closed | Open | pins 1 & 2 closed |
| P24T | Open | Open | Open |

Continued on next page. ...

ABIT COMPUTER CORPORATION

P B 4 (R E V . 1 . 1)

... continued from previous page

| CPU TYPE CONFIGURATION | | | |
|------------------------|--------------------|---------------|---------------|
| Type | RJ1 | RJ2 | RJ3 |
| 80486SX | pins 1 - 8 closed | Installed | Not installed |
| SL AM486DX | pins 3 - 10 closed | Installed | Not installed |
| 80486DX | pins 1 - 8 closed | Installed | Not installed |
| CX486DX2 | pins 1 - 8 closed | Not installed | Installed |
| AM486DX2 | pins 1 - 8 closed | Installed | Not installed |
| 80486DX2 | pins 1 - 8 closed | Installed | Not installed |
| CX486DX4 | pins 1 - 8 closed | Not installed | Installed |
| AM486DX4 | pins 1 - 8 closed | Installed | Not installed |
| 80486DX4 | pins 1 - 8 closed | Installed | Not installed |
| CX M1 | pins 1 - 8 closed | Installed | Not installed |
| P24D | pins 3 - 10 closed | Installed | Not installed |
| P24T | pins 7 - 14 closed | Installed | Not installed |

Note: Pins designated should be in the closed position.

| CPU SPEED CONFIGURATION | | |
|-------------------------|--------|--------|
| Speed | JP4 | JP11 |
| 25MHz | Open | Open |
| 33MHz | Closed | Closed |
| 40MHz | Closed | Open |
| 50iMHz | Open | Open |
| 66iMHz | Closed | Closed |
| 75iMHz | Open | Open |
| 80iMHz | Closed | Open |
| 100iMHz | Closed | Closed |
| 120iMHz | Closed | Open |

| CPU VOLTAGE CONFIGURATION | | |
|---------------------------|-------------------|-------------------|
| Voltage | JP1 | JP2 |
| 3.45v | pins 1 & 2 closed | pins 2 & 3 closed |
| 3.6v | pins 2 & 3 closed | pins 2 & 3 closed |
| 4v | pins 4 & 5 closed | pins 2 & 3 closed |
| 5v | pins 1 & 2 closed | pins 1 & 2 closed |