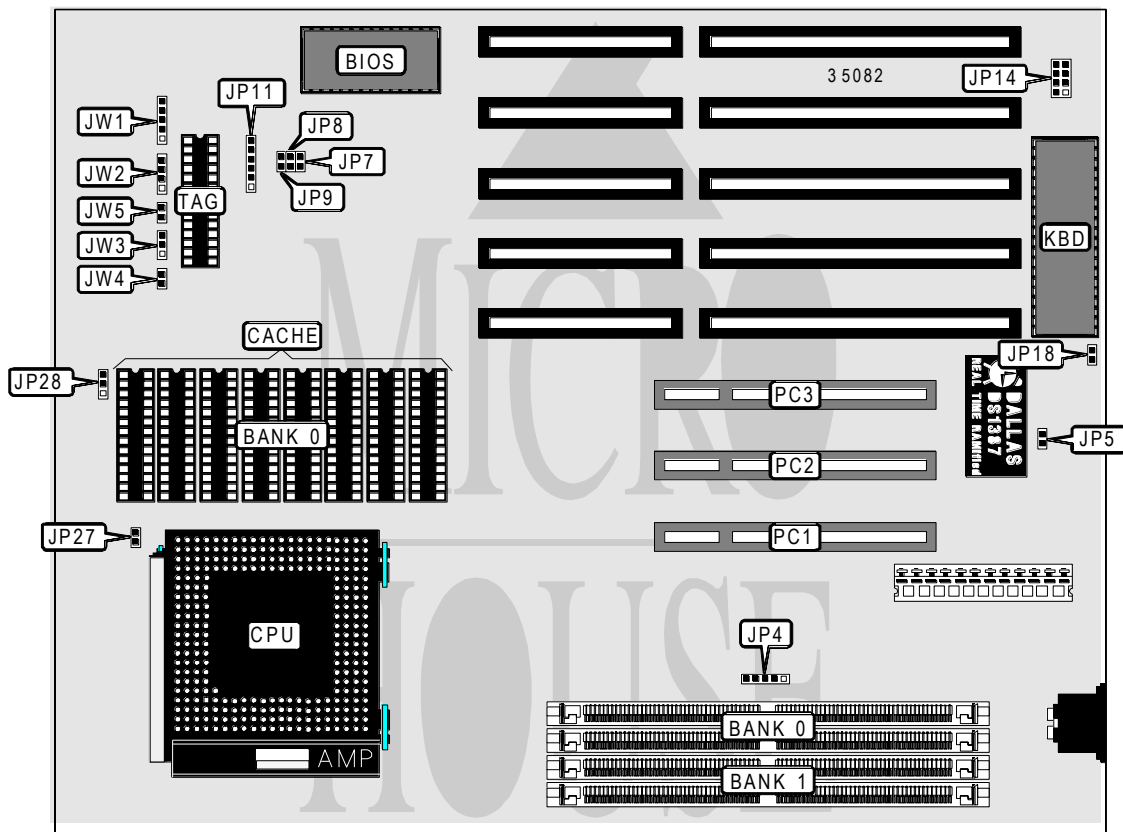


ABIT COMPUTER CORPORATION PK5 (REV. 1.1)

Processor	Pentium
Processor Speed	90/100/120/133MHz
Chip Set	OPTI
Max. Onboard DRAM	128MB
Cache	256/512/1024KB
BIOS	Award
Dimensions	254mm x 218mm
I/O Options	32-bit PCI slots (3), green PC connector
NPU Options	None



CONNECTIONS			
Purpose	Location	Purpose	Location
Green PC connector	JP14	Reset switch	JW4
Power LED & keylock	JW1	Turbo LED	JW5
Speaker	JW2	32-bit PCI slots	PC1 - PC3
Turbo switch	JW3		

Continued on next page. . .

ABIT COMPUTER CORPORATION

PK5 (REV. 1.1)

... continued from previous page

USER CONFIGURABLE SETTINGS		
Function	Jumper	Position
í CMOS memory normal operation	JP5	Open
CMOS memory clear	JP5	Closed
í Monitor type select color	JP18	Closed
Monitor type select monochrome	JP18	Open
í Factory configured - do not alter	JP28	N/A

DRAM CONFIGURATION		
Size	Bank 0	Bank 1
2MB	(2) 256K x 36	NONE
4MB	(2) 512K x 36	NONE
4MB	(2) 256K x 36	(2) 256K x 36
6MB	(2) 256K x 36	(2) 512K x 36
8MB	(2) 1M x 36	NONE
8MB	(2) 512K x 36	(2) 512K x 36
10MB	(2) 256K x 36	(2) 1M x 36
12MB	(2) 512K x 36	(2) 1M x 36
16MB	(2) 2M x 36	NONE
16MB	(2) 1M x 36	(2) 1M x 36
18MB	(2) 256K x 36	(2) 2M x 36
20MB	(2) 512K x 36	(2) 2M x 36
24MB	(2) 1M x 36	(2) 2M x 36
32MB	(2) 4M x 36	NONE
32MB	(2) 2M x 36	(2) 2M x 36
34MB	(2) 256K x 36	(2) 4M x 36
36MB	(2) 512K x 36	(2) 4M x 36
40MB	(2) 1M x 36	(2) 4M x 36
48MB	(2) 2M x 36	(2) 4M x 36
64MB	(2) 8M x 36	NONE
64MB	(2) 4M x 36	(2) 4M x 36
66MB	(2) 256K x 36	(2) 8M x 36
68MB	(2) 512K x 36	(2) 8M x 36
72MB	(2) 1M x 36	(2) 8M x 36
80MB	(2) 2M x 36	(2) 8M x 36
96MB	(2) 4M x 36	(2) 8M x 36
128MB	(2) 8M x 36	(2) 8M x 36

DRAM CONFIGURATION	
Type	JP4
Bank 0 = single side SIMM & Bank 1 = any SIMM	pins 1 & 2, 3 & 4 closed
Bank 0 = double side SIMM & Bank 1 = any SIMM	pins 2 & 3, 4 & 5 closed

Continued on next page. . .

ABIT COMPUTER CORPORATION

PK5 (REV. 1.1)

... continued from previous page

CACHE CONFIGURATION		
Size	Bank 0	TAG
256KB	(8) 32K x 8	(1) 8K x 8
512KB	(8) 64K x 8	(1) 32K x 8
1MB	(8) 128K x 8	(1) 32K x 8

CACHE JUMPER CONFIGURATION	
Size	JP11
256KB	pins 2 & 3, 5 & 6 closed
512KB	pins 1 & 2, 5 & 6 closed
1MB	pins 1 & 2, 4 & 5 closed

CPU SPEED CONFIGURATION				
Speed	JP7	JP8	JP9	JP27
75MHz	Closed	Open	Open	Open
90MHz	Open	Closed	Open	Open
100MHz	Closed	Open	Closed	Open
120MHz	Open	Closed	Open	Closed
133MHz	Closed	Open	Closed	Closed