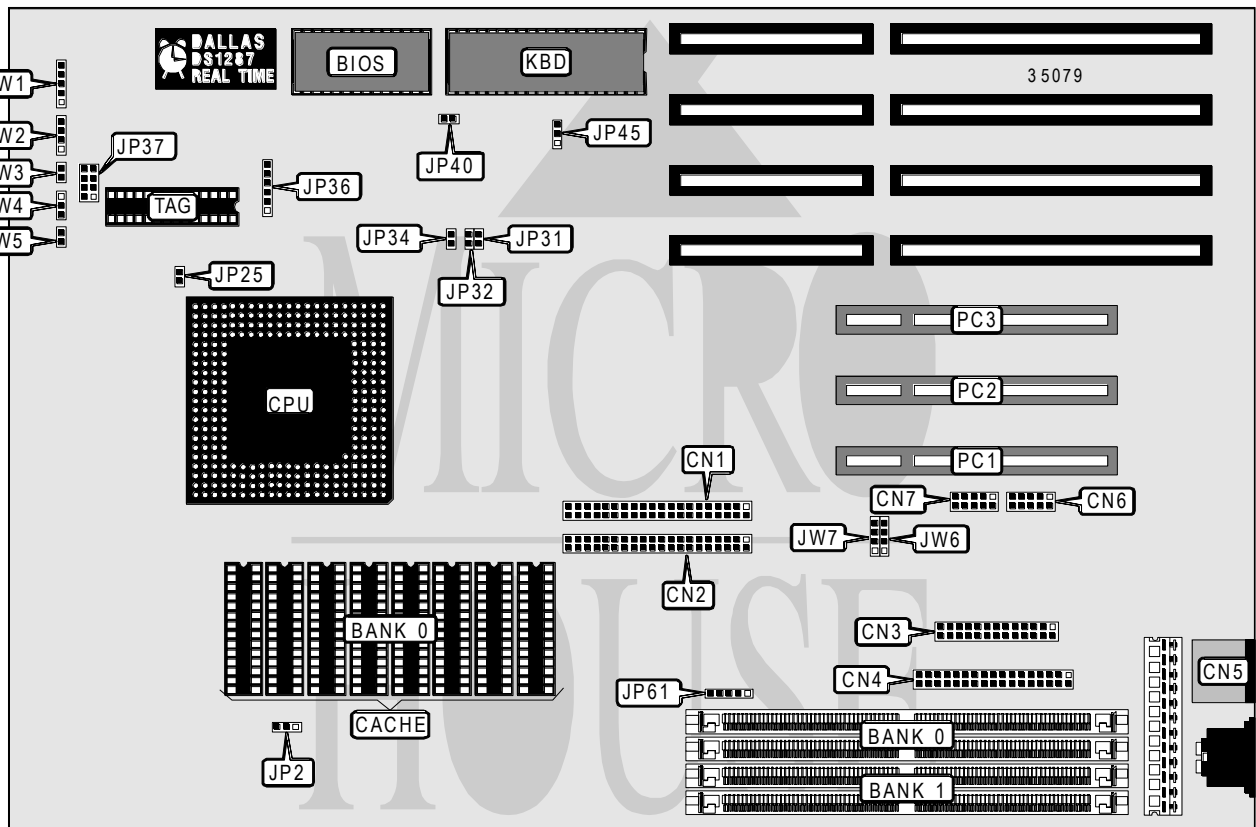


ABIT COMPUTER CORPORATION P E 5 (REV. 1.2)

Processor	Pentium
Processor Speed	75/90/100/120MHz
Chip Set	OPTI
Max. Onboard DRAM	128MB
Cache	256/512/1024KB
BIOS	Award
Dimensions	330mm x 218mm
I/O Options	32-bit PCI slots (3), floppy drive interface, green PC connector, IDE interfaces (2), parallel port, PS/2 mouse port, serial ports (2)
NPU Options	None



CONNECTIONS			
Purpose	Location	Purpose	Location
IDE interface (secondary)	CN1	Speaker	JW1
IDE interface (primary)	CN2	Power LED & keylock	JW2
Parallel port	CN3	Turbo LED	JW3
Floppy drive interface	CN4	Turbo switch	JW4
PS/2 mouse port	CN5	Reset switch	JW5
Serial port 1	CN6	IDE interface LED	JW6
Serial port 2	CN7	IDE interface LED	JW7
Green PC connector	JP37	32-bit PCI slots	PC1 - PC3

Continued on next page. . .

ABIT COMPUTER CORPORATION

PE5 (REV. 1.2)

... continued from previous page

USER CONFIGURABLE SETTINGS		
Function	Jumper	Position
í Factory configured - do not alter	JP2	N/A
í CPU type select STD & VR	JP25	Open
CPU type select VRE	JP25	Closed
í Monitor type select color	JP40	Closed
Monitor type select monochrome	JP40	Open
í CMOS memory normal operation	JP45	pins 1 & 2 closed
CMOS memory clear	JP45	pins 2 & 3 closed

DRAM CONFIGURATION		
Size	Bank 0	Bank 1
2MB	(2) 256K x 36	NONE
4MB	(2) 512K x 36	NONE
4MB	(2) 256K x 36	(2) 256K x 36
6MB	(2) 256K x 36	(2) 512K x 36
8MB	(2) 1M x 36	NONE
8MB	(2) 512K x 36	(2) 512K x 36
10MB	(2) 256K x 36	(2) 1M x 36
12MB	(2) 512K x 36	(2) 1M x 36
16MB	(2) 2M x 36	NONE
16MB	(2) 1M x 36	(2) 1M x 36
18MB	(2) 256K x 36	(2) 2M x 36
20MB	(2) 512K x 36	(2) 2M x 36
24MB	(2) 1M x 36	(2) 2M x 36
32MB	(2) 4M x 36	NONE
32MB	(2) 2M x 36	(2) 2M x 36
34MB	(2) 256K x 36	(2) 4M x 36
36MB	(2) 512K x 36	(2) 4M x 36
40MB	(2) 1M x 36	(2) 4M x 36
48MB	(2) 2M x 36	(2) 4M x 36
64MB	(2) 8M x 36	NONE
64MB	(2) 4M x 36	(2) 4M x 36
66MB	(2) 256K x 36	(2) 8M x 36
68MB	(2) 512K x 36	(2) 8M x 36
72MB	(2) 1M x 36	(2) 8M x 36
80MB	(2) 2M x 36	(2) 8M x 36
96MB	(2) 4M x 36	(2) 8M x 36
128MB	(2) 8M x 36	(2) 8M x 36

DRAM JUMPER CONFIGURATION	
Type	JP61
Bank 0 = single side SIMM Bank 1 = single or double side SIMM	pins 1 & 2, 3 & 4 closed
Bank 0 = double side SIMM Bank 1 = single or double side SIMM	pins 2 & 3, 4 & 5 closed

Continued on next page. . .

ABIT COMPUTER CORPORATION

PE5 (REV. 1.2)

... continued from previous page

CACHE CONFIGURATION		
Size	Bank 0	TAG
256KB	(8) 32K x 8	(1) 8K x 8
512KB	(8) 64K x 8	(1) 32K x 8
1MB	(8) 128K x 8	(1) 32K x 8

CACHE JUMPER CONFIGURATION	
Size	JP36
256KB	pins 2 & 3, 5 & 6 closed
512KB	pins 1 & 2, 5 & 6 closed
1MB	pins 1 & 2, 4 & 5 closed

CPU SPEED CONFIGURATION			
Speed	JP31	JP32	JP34
75MHz	Open	Open	Open
90MHz	Closed	Open	Open
100MHz	Open	Closed	Open
120MHz	Closed	Open	Closed