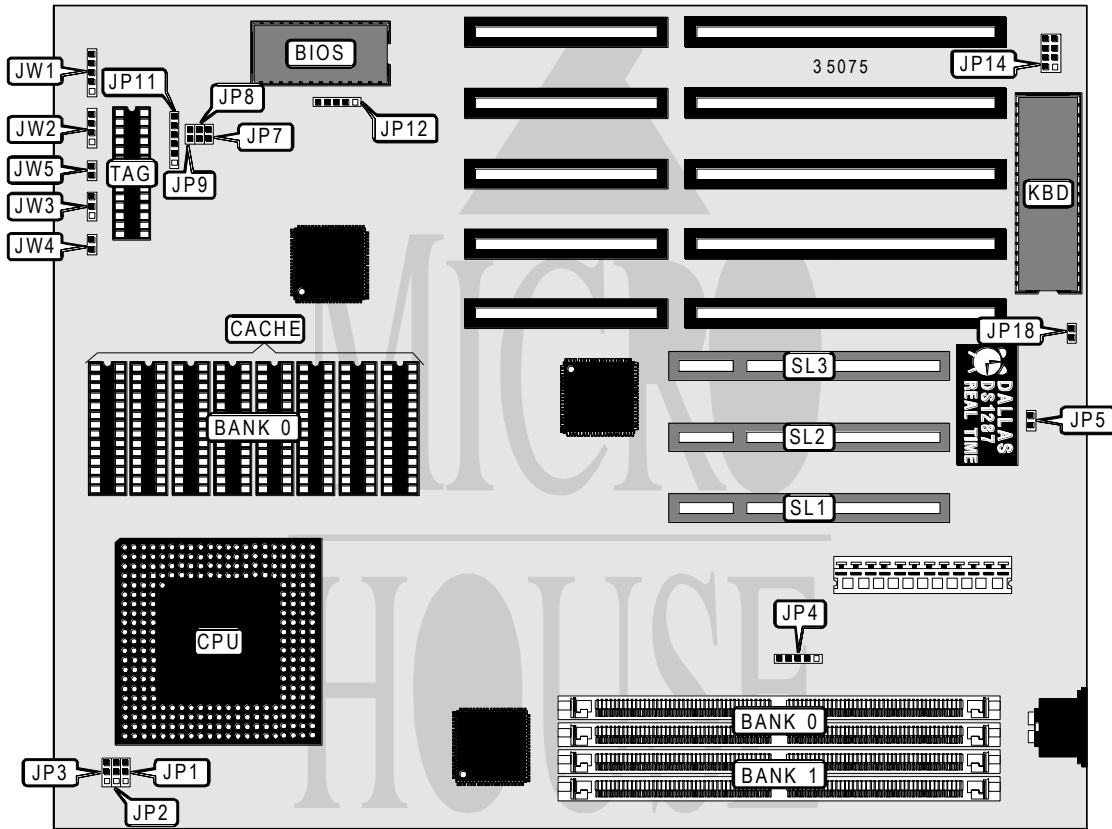


ABIT COMPUTER CORPORATION P S 5 P C I

Processor	Pentium
Processor Speed	60/66MHz
Chip Set	Unidentified
Max. Onboard DRAM	128MB
Cache	256/512/1024KB
BIOS	Award
Dimensions	330mm x 218mm
I/O Options	32-bit PCI bus slots (3), green PC connector
NPU Options	None



CONNECTIONS			
Purpose	Location	Purpose	Location
Green PC connector	JP14	Reset switch	JW4
Power LED & keylock	JW1	Turbo LED	JW5
Speaker	JW2	32-bit PCI bus slots	SL1 - SL3
Turbo switch	JW3		

Continued on next page. . .

ABIT COMPUTER CORPORATION

PS5 PCI

... continued from previous page

USER CONFIGURABLE SETTINGS		
Function	Jumper	Position
í CPU cache select write back	JP1	pins 1 & 2 closed
CPU cache select write through	JP1	pins 2 & 3 closed
í Pipeline mode disabled	JP2	pins 1 & 2 closed
Pipeline mode enabled	JP2	pins 2 & 3 closed
í Always invalid	JP3	pins 2 & 3 closed
Only invalid in write cycle	JP3	pins 1 & 2 closed
í CMOS memory normal operation	JP5	Open
CMOS memory clear	JP5	Closed
í Factory configured - do not alter	JP12	Open
í Monitor type select color	JP18	Closed
Monitor type select monochrome	JP18	Open

DRAM CONFIGURATION		
Size	Bank 0	Bank 1
2MB	(2) 256K x 36	NONE
4MB	(2) 512K x 36	NONE
4MB	(2) 256K x 36	(2) 256K x 36
6MB	(2) 256K x 36	(2) 512K x 36
8MB	(2) 1M x 36	NONE
8MB	(2) 512K x 36	(2) 512K x 36
10MB	(2) 256K x 36	(2) 1M x 36
12MB	(2) 512K x 36	(2) 1M x 36
16MB	(2) 2M x 36	NONE
16MB	(2) 1M x 36	(2) 1M x 36
18MB	(2) 256K x 36	(2) 2M x 36
20MB	(1) 512K x 36	(2) 2M x 36
20MB	(2) 512K x 36	(2) 2M x 36
32MB	(2) 4M x 36	NONE
32MB	(2) 2M x 36	(2) 2M x 36
34MB	(2) 256K x 36	(2) 4M x 36
36MB	(2) 512K x 36	(2) 4M x 36
40MB	(2) 1M x 36	(2) 4M x 36
48MB	(2) 2M x 36	(2) 4M x 36
64MB	(2) 8M x 36	NONE
64MB	(2) 4M x 36	(2) 4M x 36
66MB	(2) 256K x 36	(2) 8M x 36
68MB	(2) 512K x 36	(2) 8M x 36
72MB	(2) 1M x 36	(2) 8M x 36
96MB	(2) 4M x 36	(2) 8M x 36
128MB	(2) 8M x 36	(2) 8M x 36

Continued on next page. ...

ABIT COMPUTER CORPORATION

PS5 PCI

... continued from previous page

DRAM JUMPER CONFIGURATION		
Bank 0	Bank 1	JP4
Single sided SIMM	Single sided SIMM	pins 1 & 2, 3 & 4 closed
Single sided SIMM	Double sided SIMM	pins 1 & 2, 3 & 4 closed
Double sided SIMM	Double sided SIMM	pins 2 & 3, 4 & 5 closed
Double sided SIMM	Single sided SIMM	pins 2 & 3, 4 & 5 closed

CACHE CONFIGURATION		
Size	Bank 0	TAG
256KB	(8) 32K x 8	(1) 8K x 8
512KB	(8) 64K x 8	(1) 32K x 8
1MB	(8) 128K x 8	(1) 32K x 8

CACHE JUMPER CONFIGURATION	
Size	JP11
256KB	pins 2 & 3, 5 & 6 closed
512KB	pins 1 & 2, 5 & 6 closed
1MB	pins 1 & 2, 4 & 5 closed

CPU SPEED CONFIGURATION (IMI IMISC466 CLOCK GENERATOR)			
Speed	JP7	JP8	JP9
60MHz	Open	Open	Closed
66MHz	Open	Open	Open

CPU SPEED CONFIGURATION (MXIC MX8315 CLOCK GENERATOR)			
Speed	JP7	JP8	JP9
60MHz	Open	Closed	Open
66MHz	Closed	Open	Closed