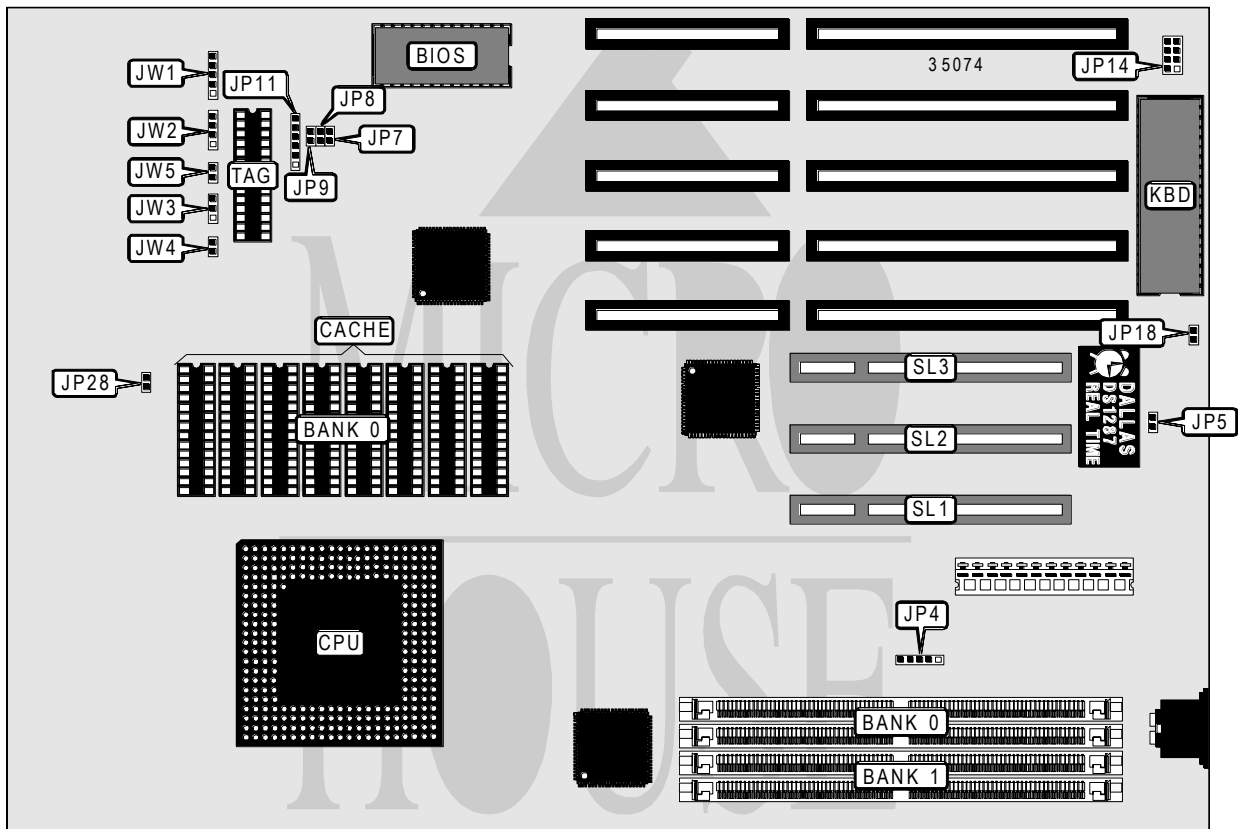


ABIT COMPUTER CORPORATION PK5 PCI

Processor	Pentium
Processor Speed	75/90/100MHz
Chip Set	Unidentified
Max. Onboard DRAM	128MB
Cache	256/512/1024KB
BIOS	Award
Dimensions	330mm x 218mm
I/O Options	32-bit PCI bus slots (3), green PC connector
NPU Options	None



CONNECTIONS			
Purpose	Location	Purpose	Location
Green PC connector	JP14	Reset switch	JW4
Power LED & keylock	JW1	Turbo LED	JW5
Speaker	JW2	32-bit PCI bus slots	SL1 - SL3
Turbo switch	JW3		

Continued on next page. . .

ABIT COMPUTER CORPORATION

PK5 PCI

... continued from previous page

USER CONFIGURABLE SETTINGS		
Function	Jumper	Position
í CMOS memory normal operation	JP5	Open
CMOS memory clear	JP5	Closed
í Monitor type select color	JP18	Closed
Monitor type select monochrome	JP18	Open
í Factory configured - do not alter	JP28	Open

DRAM CONFIGURATION		
Size	Bank 0	Bank 1
2MB	(2) 256K x 36	NONE
4MB	(2) 512K x 36	NONE
4MB	(2) 256K x 36	(2) 256K x 36
6MB	(2) 256K x 36	(2) 512K x 36
8MB	(2) 1M x 36	NONE
8MB	(2) 512K x 36	(2) 512K x 36
10MB	(2) 256K x 36	(2) 1M x 36
12MB	(2) 512K x 36	(2) 1M x 36
16MB	(2) 2M x 36	NONE
16MB	(2) 1M x 36	(2) 1M x 36
18MB	(2) 256K x 36	(2) 2M x 36
20MB	(1) 512K x 36	(2) 2M x 36
24MB	(2) 512K x 36	(2) 2M x 36
32MB	(2) 4M x 36	NONE
32MB	(2) 2M x 36	(2) 2M x 36
34MB	(2) 256K x 36	(2) 4M x 36
36MB	(2) 512K x 36	(2) 4M x 36
40MB	(2) 1M x 36	(2) 4M x 36
48MB	(2) 2M x 36	(2) 4M x 36
64MB	(2) 8M x 36	NONE
64MB	(2) 4M x 36	(2) 4M x 36
66MB	(2) 256K x 36	(2) 8M x 36
68MB	(2) 512K x 36	(2) 8M x 36
72MB	(2) 1M x 36	(2) 8M x 36
80MB	(2) 4M x 36	(2) 8M x 36
96MB	(2) 8M x 36	NONE
128MB	(2) 8M x 36	(2) 8M x 36

DRAM JUMPER CONFIGURATION		
Bank 0	Bank 1	JP4
Single sided SIMM	Single sided SIMM	pins 1 & 2, 3 & 4 closed
Single sided SIMM	Double sided SIMM	pins 1 & 2, 3 & 4 closed
Double sided SIMM	Double sided SIMM	pins 2 & 3, 4 & 5 closed
Double sided SIMM	Single sided SIMM	pins 2 & 3, 4 & 5 closed

Continued on next page. . .

ABIT COMPUTER CORPORATION

PK5 PCI

... continued from previous page

CACHE CONFIGURATION		
Size	Bank 0	TAG
256KB	(8) 32K x 8	(1) 8K x 8
512KB	(8) 64K x 8	(1) 32K x 8
1MB	(8) 128K x 8	(1) 32K x 8

CACHE JUMPER CONFIGURATION	
Size	JP11
256KB	pins 2 & 3, 5 & 6 closed
512KB	pins 1 & 2, 5 & 6 closed
1MB	pins 1 & 2, 4 & 5 closed

CPU SPEED CONFIGURATION			
Speed	JP7	JP8	JP9
75MHz	Closed	Open	Open
90MHz	Open	Closed	Open
100MHz	Closed	Open	Closed