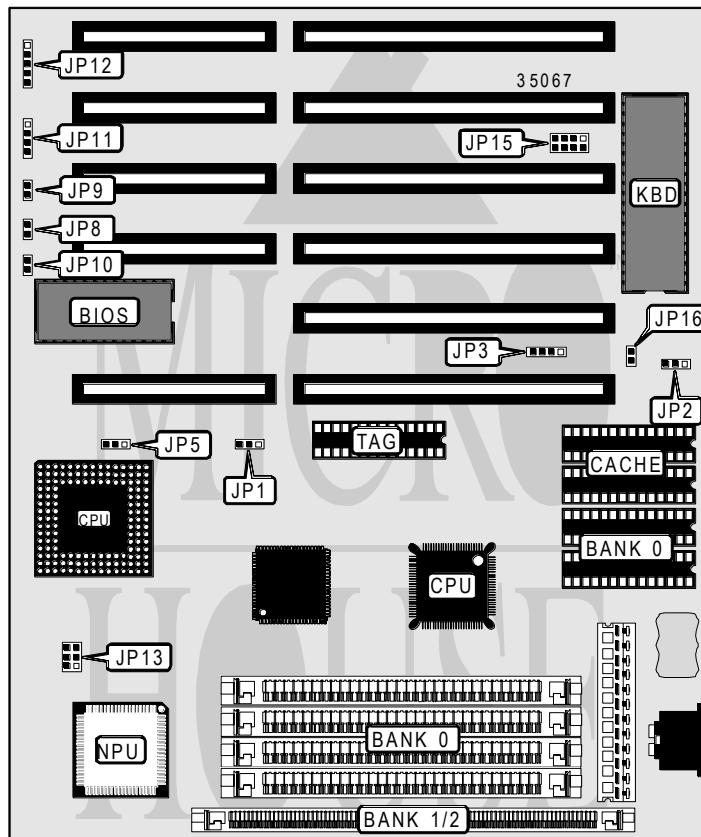


# ABIT COMPUTER CORPORATION

## 386 AT3

|                          |  |
|--------------------------|--|
| <b>Processor</b>         | AMD386DX/80386DX/CX486DLC/Ti486DLC/Ti486SXL2 |
| <b>Processor Speed</b>   | 33/40MHz                                     |
| <b>Chip Set</b>          | ALI  |
| <b>Max. Onboard DRAM</b> | 192MB  |
| <b>Cache</b>             | 32/128KB                                     |
| <b>BIOS</b>              | AMI/AWARD                                    |
| <b>Dimensions</b>        | 230mm x 218mm                                |
| <b>I/O Options</b>       | Green PC feature connector                   |
| <b>NPU Options</b>       | 80387DX                                      |



| CONNECTIONS      |          |                            |          |
|------------------|----------|----------------------------|----------|
| Purpose          | Location | Purpose                    | Location |
| External battery | JP3      | Speaker                    | JP11     |
| Turbo switch     | JP8      | Power LED & keylock        | JP12     |
| Turbo LED        | JP9      | Green PC feature connector | JP15     |
| Reset switch     | JP10     |                            |          |

Continued next page...

# ABIT COMPUTER CORPORATION

## 386 AT3

... continued from previous page.

| USER CONFIGURABLE SETTINGS |               |                   |
|----------------------------|---------------|-------------------|
| Function                   | Jumper/Switch | Position          |
| í CMOS normal operation    | JP2           | pins 1 & 2        |
| CMOS memory clear          | JP2           | pins 2 & 3        |
| í CPU clock select 33MHz   | JP13          | pins 1 & 2, 3 & 4 |
| CPU clock select 40MHz     | JP13          | pins 5 & 6        |
| í 128KB cache enabled      | JP16          | Closed            |
| 32KB cache enabled         | JP16          | Open              |

Note: Pins designated are in the closed position.

| DRAM CONFIGURATION |              |               |
|--------------------|--------------|---------------|
| Size               | Bank 0       | Bank 1/2      |
| 1MB                | (4) 256K x 9 | NONE          |
| 2MB                | (4) 256K x 9 | (1) 256K x 36 |
| 4MB                | (4) 1M x 9   | NONE          |
| 5MB                | (4) 1M x 9   | (1) 256K x 36 |
| 8MB                | (4) 1M x 9   | (1) 1M x 36   |
| 16MB               | (4) 4M x 9   | NONE          |
| 17MB               | (4) 4M x 9   | (1) 256K x 36 |
| 20MB               | (4) 4M x 9   | (1) 1M x 36   |
| 32MB               | (4) 4M x 9   | (1) 4M x 36   |
| 64MB               | (4) 16M x 9  | NONE          |
| 192MB              | (4) 16M x 9  | (1) 32M x 36  |

| CACHE CONFIGURATION |             |             |
|---------------------|-------------|-------------|
| Size                | Bank 0      | TAG         |
| 32KB                | (4) 8K x 8  | (1) 8K x 8  |
| 128KB               | (4) 32K x 8 | (1) 16K x 8 |

| CPU TYPE CONFIGURATION |                   |                   |
|------------------------|-------------------|-------------------|
| CPU Type               | JP1               | JP5               |
| 80386DX                | pins 1 & 2 closed | pins 1 & 2 closed |
| 80486DLC               | pins 2 & 3 closed | pins 2 & 3 closed |

| GREEN FEATURE CONNECTOR CONFIGURATION |                  |
|---------------------------------------|------------------|
| Pin                                   | Function         |
| 1                                     | HSYNC            |
| 2                                     | Ground           |
| 3                                     | VSYNC            |
| 4                                     | Ground           |
| 5                                     | ENVEDIO          |
| 6                                     | Ground           |
| 7                                     | Monitor AC power |
| 8                                     | Ground           |