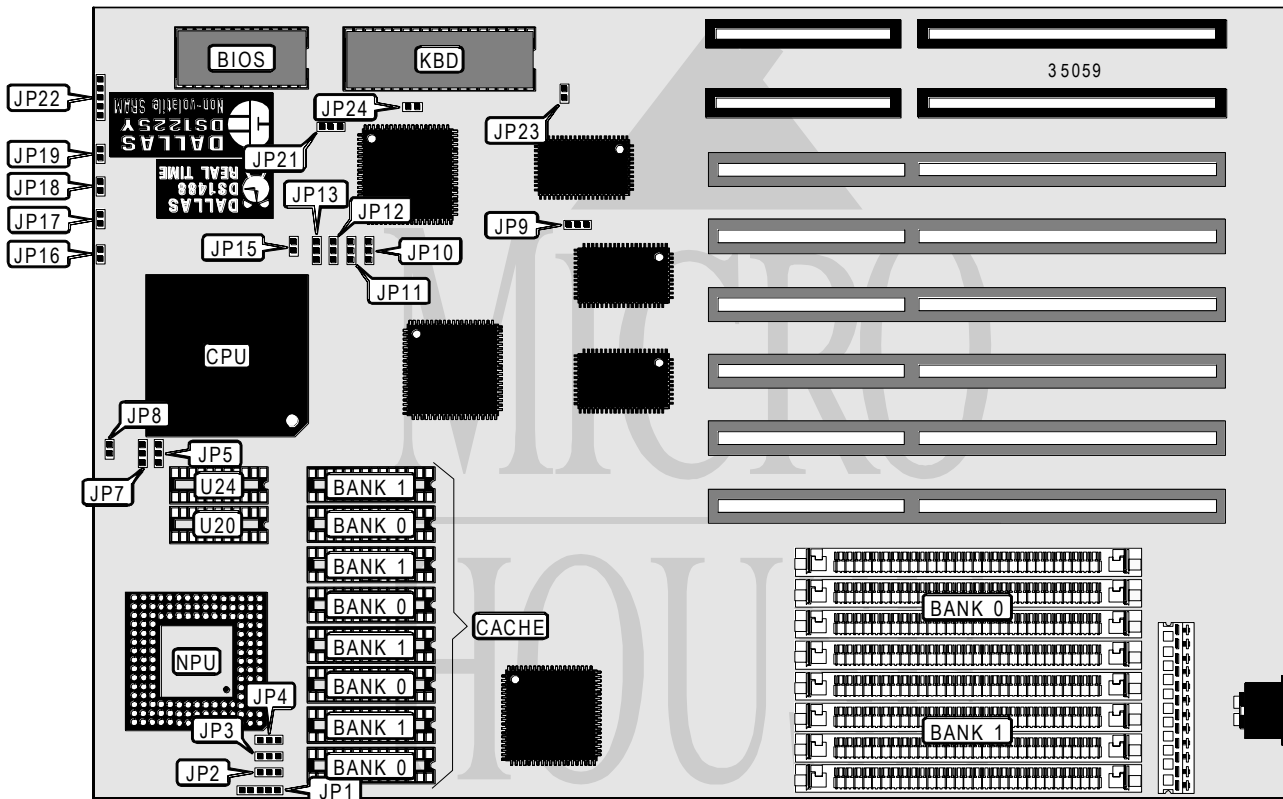


# ABIT COMPUTER CORPORATION

## 486 EISA-AE4

<b>Processor</b>	80486SX/80487SX/80486DX/80486DX2
<b>Processor Speed</b>	22/25/33/50(internal)/50/66(internal)MHz
<b>Chip Set</b>	SIS
<b>Max. Onboard DRAM</b>	128MB
<b>Cache</b>	64/128/256KB
<b>BIOS</b>	AMI
<b>Dimensions</b>	330mm x 218mm
<b>I/O Options</b>	None
<b>NPU Options</b>	4167



### CONNECTIONS

Purpose	Location	Purpose	Location
Power LED	JP8	Reset switch	JP18
Turbo LED	JP16	Speaker	JP19
Turbo switch	JP17	Power LED & keylock	JP22

*Continued on next page . . .*

# ABIT COMPUTER CORPORATION

## 486 EISA - AE4

... continued from previous page

USER CONFIGURABLE SETTINGS		
Function	Jumper	Position
í Factory configured - do not alter	JP3	Open
í Factory configured - do not alter	JP4	Open
í Factory configured - do not alter	JP9	pins 1 & 2 closed
í Factory configured - do not alter	JP10	pins 1 & 2 closed
í Factory configured - do not alter	JP11	pins 1 & 2 closed
í Factory configured - do not alter	JP21	pins 1 & 2 closed
í Factory configured - do not alter	JP23	Closed
í Monitor type select color	JP24	Open
Monitor type select monochrome	JP24	Closed

DRAM CONFIGURATION		
Size	Bank 0	Bank 1
1MB	(4) 256K x 9	NONE
2MB	(4) 256K x 9	(4) 256K x 9
4MB	(4) 1M x 9	NONE
8MB	(4) 1M x 9	(4) 1M x 9
16MB	(4) 4M x 9	NONE
32MB	(4) 4M x 9	(4) 4M x 9
64MB	(4) 16M x 9	NONE
128MB	(4) 16M x 9	(4) 16M x 9

CACHE CONFIGURATION			
Size	Bank 0	Bank 1	TAG (U20 and U24)
64KB	(4) 8K x 8	(4) 8K x 8	(2) 16K x 4
128KB	(4) 32K x 8	NONE	(2) 16K x 4
256KB	(4) 32K x 8	(4) 32K x 8	(2) 16K x 4

CACHE JUMPER CONFIGURATION				
Size	JP1	JP2	JP12	JP13
64KB	pins 2 & 3 closed	pins 1 & 2 closed	pins 1 & 2 closed	pins 1 & 2 closed
128KB	pins 1 & 2 closed	pins 2 & 3 closed	pins 1 & 2 closed	pins 2 & 3 closed
256KB	pins 4 & 5 closed	pins 2 & 3 closed	pins 2 & 3 closed	pins 2 & 3 closed

CPU TYPE CONFIGURATION			
Type	JP5	JP7	JP15
80486SX	Open	pins 2 & 3 closed	Open
80487SX	pins 2 & 3 closed	pins 1 & 2 closed	Closed
80486DX	pins 1 & 2 closed	pins 1 & 2 closed	Closed
80486DX2	pins 1 & 2 closed	pins 1 & 2 closed	Closed