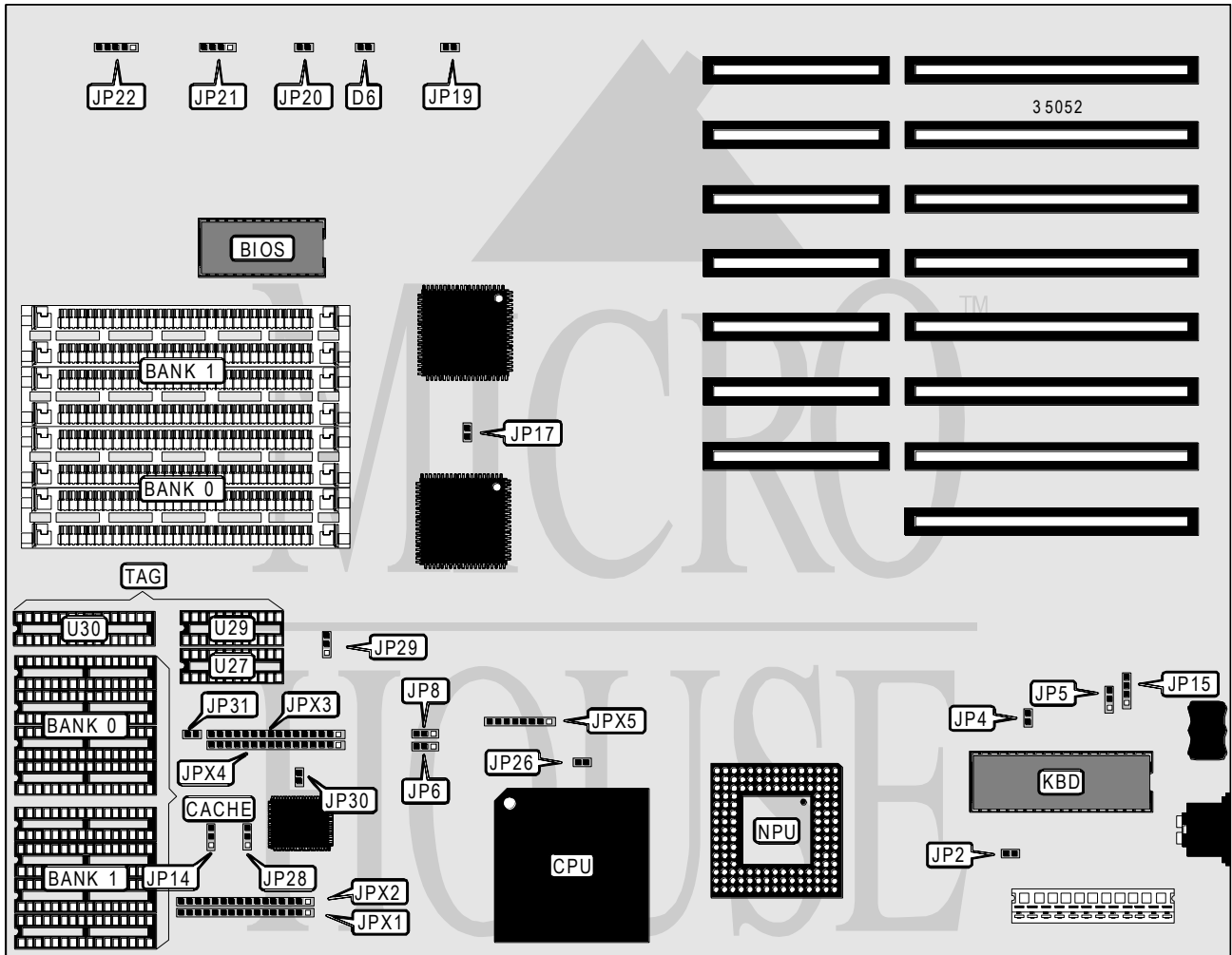


ABIT COMPUTER CORPORATION

AS420/AS425/AS433/AS455

Processor	80486SX/80486DX
Processor Speed	20/25/33/40MHz
Chip Set	SIS
Max. Onboard DRAM	32MB
Cache	32/64/128/256/512/1024KB
BIOS	AMI
Dimensions	330mm x 214mm
I/O Options	None
NPU Options	4167



CONNECTIONS			
Purpose	Location	Purpose	Location
Turbo LED	D6	Reset	JP20
External battery	JP15	Speaker	JP21
Turbo switch	JP19	Power LED & keylock	JP22

Continued on next page . . .

ABIT COMPUTER CORPORATION

AS420/AS425/AS433/AS455

... continued from previous page

USER CONFIGURABLE SETTINGS		
Function	Jumper	Position
í Factory configured - do not alter	JP2	Open
í Monitor type select monochrome	JP4	Open
Monitor type select color	JP4	Closed
í CMOS memory normal operation	JP5	pins 1 & 2 closed
CMOS memory clear	JP5	pins 2 & 3 closed
í Factory configured - do not alter	JP6	pins 1 & 2 closed
í Factory configured - do not alter	JP8	pins 1 & 2 closed
í Factory configured - do not alter	JP14	pins 1 & 2 closed
í Factory configured - do not alter	JP17	pins 1 & 2 closed

DRAM CONFIGURATION		
Size	Bank 0	Bank 1
1MB	(4) 256K x 9	NONE
2MB	(4) 256K x 9	(4) 256K x 9
4MB	(4) 1M x 9	NONE
8MB	(4) 1M x 9	(4) 1M x 9
16MB	(4) 4M x 9	NONE
32MB	(4) 4M x 9	(4) 4M x 9

CACHE CONFIGURATION				
Size	Bank 0	Bank 1	TAG (U28 & U29)	TAG (U30)
32KB	(4) 8K x 8	NONE	(2) 16K x 4	NONE
32KB	(4) 8K x 8	NONE	NONE	(1) 8K x 8
64KB	(4) 8K x 8	(4) 8K x 8	(2) 16K x 4	NONE
64KB	(4) 8K x 8	(4) 8K x 8	NONE	(1) 8K x 8
128KB	(4) 32K x 8	NONE	(2) 64K x 4	NONE
128KB	(4) 32K x 8	NONE	NONE	(1) 32K x 8
256KB	(4) 32K x 8	(4) 32K x 8	(2) 16K x 4	NONE
256KB	(4) 32K x 8	(4) 32K x 8	NONE	(1) 32K x 8
512KB	(4) 128K x 8	NONE	NONE	(1) 128K x 8
1024KB	(4) 128K x 8	(4) 128K x 8	(2) 64K x 4	NONE
1024KB	(4) 128K x 8	(4) 128K x 8	NONE	(1) 128K x 8

CACHE JUMPER CONFIGURATION						
Size	JP28	JP30	JP31	JPX1/JPX2	JPX3	JPX4
32KB	2 & 3	Open	Closed	1 - 8	Open	1 - 16
64KB	1 & 2	Closed	Open	1 - 8	1 - 16	Open
128KB	1 & 2	Closed	Closed	3 - 10	1 - 16	Open
256KB	1 & 2	Closed	Open	5 - 12	1 - 16	Open
512KB	1 & 2	Closed	Open	7 - 14	Open	1 - 16
1024KB	1 & 2	Closed	Closed	9 - 18	1 - 16	Open

Note: Jumpers JPX1-JPX4 are closed using one or two 8-pin terminating resistors.

CPU TYPE CONFIGURATION		
Type	JP25	JPX5
80486SX	Closed	Open
80486DX	Open	Closed

